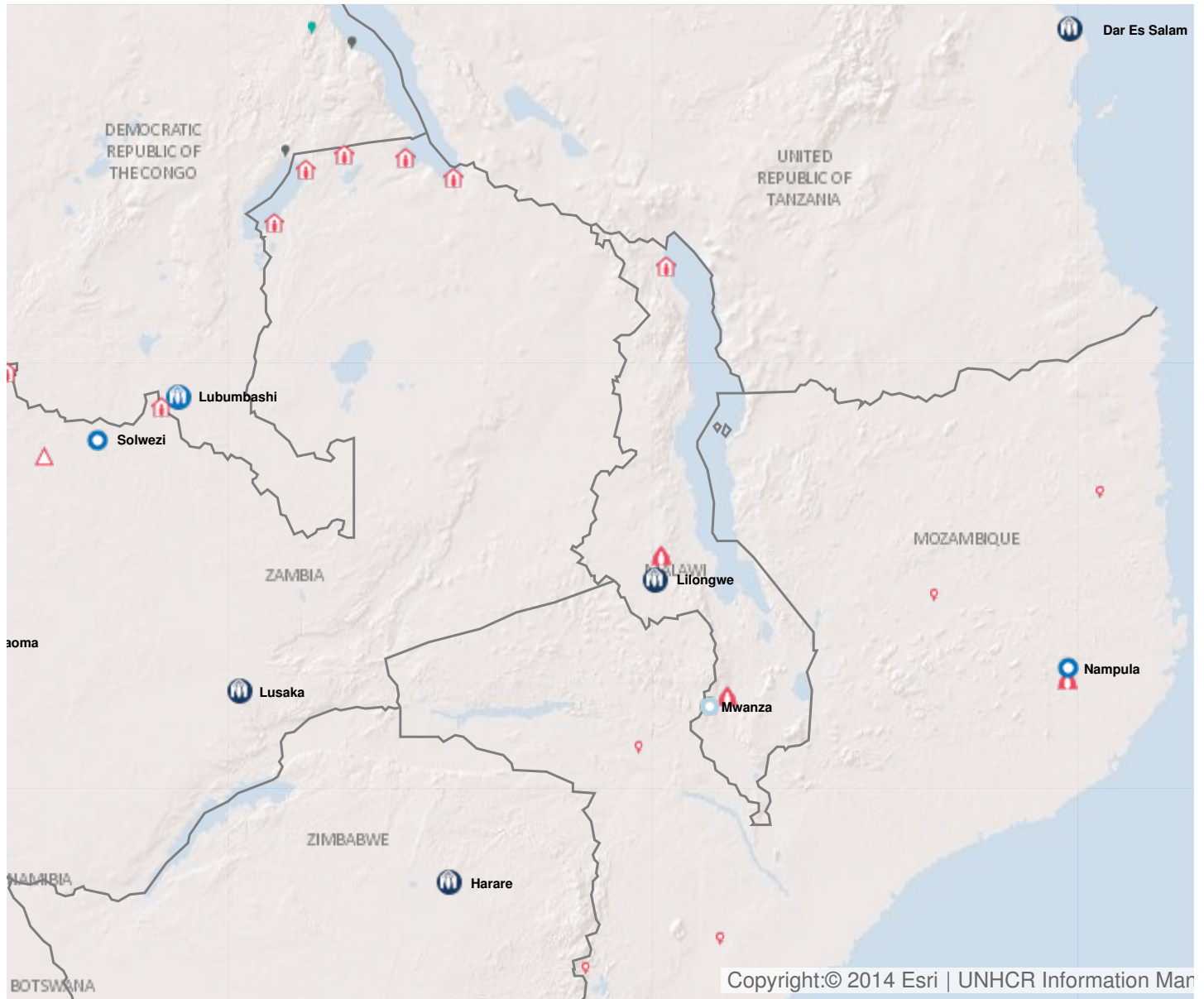


# 2018 Planning summary

Downloaded on 24/11/2017

## Operation: Malawi

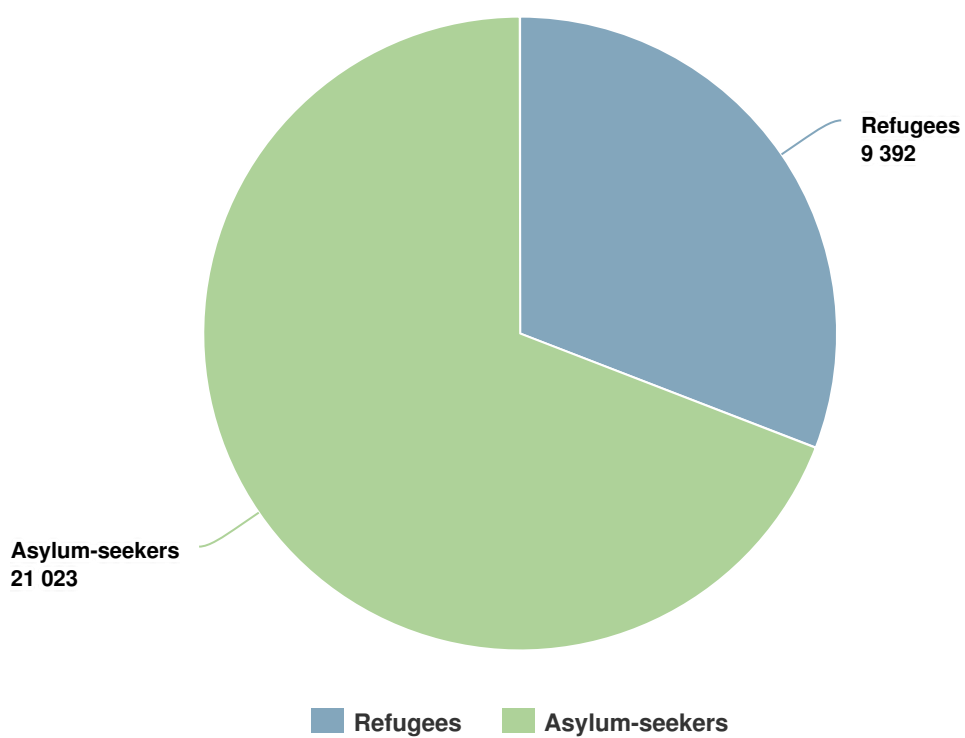


Latest update of camps and office locations **21 Nov 2016**.

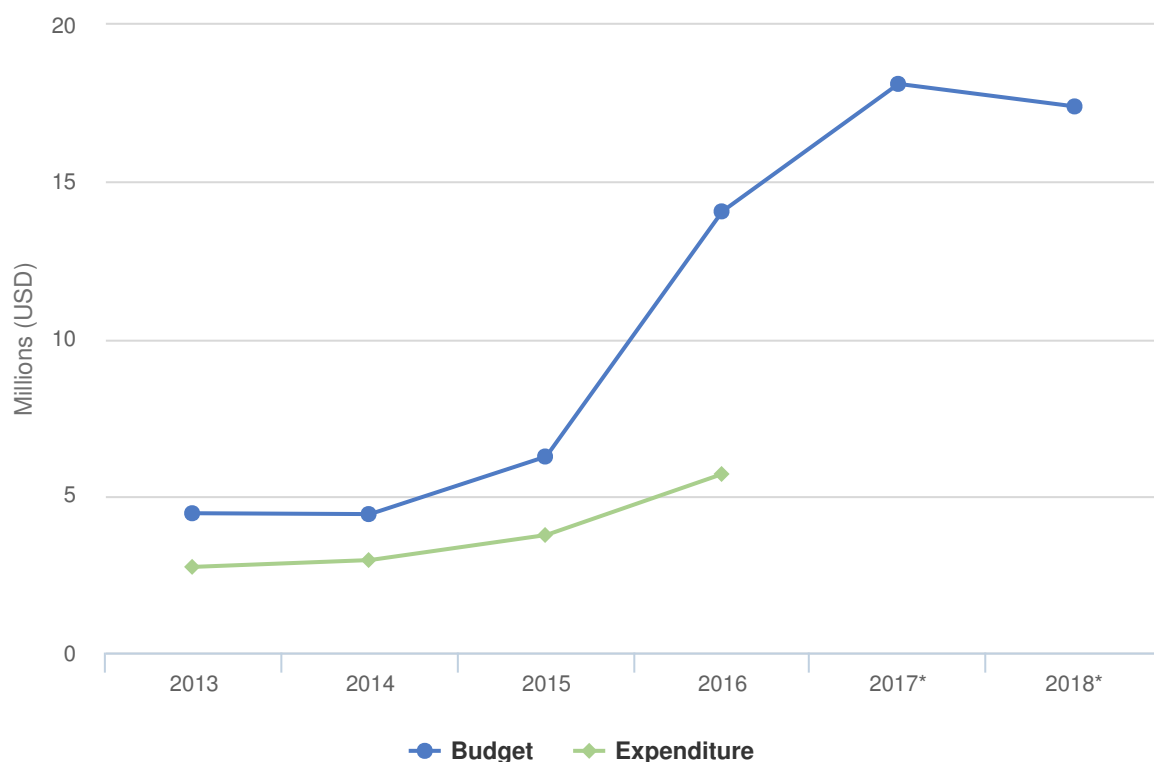
# People of Concern

**29%** INCREASE IN  
**2016**

<b>2016</b>	30,415
<b>2015</b>	23,489
<b>2014</b>	20,373



# Budgets and Expenditure for Malawi



## Plan Overview

### Working environment

Malawi has enjoyed a stable and democratic government since the end of the one party regime in 1993. The process leading to the elections in 2019 is expected to be peaceful. However, Malawi faces high living costs and breakdowns in the provision of essential social services. Malawi is also facing challenges due to floods and droughts impacting food security. The population of concern to UNHCR has increased from close to 17,000 in 2013 to over 31,000 in August 2017. The number of new asylum-seekers, particularly from the Democratic Republic of Congo, is expected to increase during 2018.

The Government has supported with land and some personnel. The operation has developed a number of partnerships with private sector, civil society, national/international NGOs, local institutions and government bodies.

### Key priorities

In 2018, UNHCR will focus on:

- Ensuring access to quality education through enhancing the capacity of teachers and provision of learning materials;
- Facilitating the voluntary return of Mozambican asylum-seekers during 2018;
- Decongestion of Dzaleka camp including phased relocation of people of concern to suitable settlement sites identified by the government.

