

HEALTH SERVICES FOR SYRIAN REFUGEES IN NORTH LEBANON

Please ask for the list of primary Health centers with this brochure

*What to do if you
need to see a doctor
or go to hospital
and what you have
to pay*



*The information contained in this brochure has been updated in
September 2017*

For more information: www.refugees-lebanon.org

TABLE OF CONTENTS

ACCESS TO HEALTH SERVICES	3
IF YOU NEED TO SEE A DOCTOR	4
DOCTOR'S FEES	4
IF YOU NEED TO GO TO HOSPITAL.....	5
HOSPITAL FEES.....	6
DOCUMENTS TO TAKE WITH YOU TO THE DOCTOR OR TO THE HOSPITAL.....	6
CHRONIC DISEASES	8
PHYSICAL OR MENTAL DISABILITIES	9
TUBERCULOSIS.....	10
Centres for Treatment of Tuberculosis in the North	10
HIV	10
LEISHMANIASIS	11
Hospital that treats Leishmaniasis.....	11
PHCc AND DISPENSARIES IN THE NORTH	11
VACCINATIONS FOR CHILDREN.....	12
National Lebanese Vaccination Schedule	12
HOSPITALS IN THE NORTH	13
CONTACT NUMBERS AND HOTLINES OF PARTNERS.....	14
CONTACT NUMBERS FOR SOCIAL SUPPORT	14
HOW REGISTERED REFUGEES ACCESS MEDICAL TREATMENT IN LEBANON	15

ACCESS TO HEALTH SERVICES

I am a Syrian refugee. Can I go to a doctor or a hospital in Lebanon?

Yes. UNHCR provides health care services to registered refugees through its partners.

Registered Syrian refugees can see a doctor at a **Primary Health Care Centre (“PHCc”) or a Health Centre (“dispensary”)** for medical consultations, prescriptions, laboratory tests, immunizations, antenatal care and other reproductive health services, management of chronic diseases. You can also receive mental health treatment, including counseling and other psychological support services.

You should only go to hospital in a medical emergency.

If you need to see a doctor you should go to the PHCc, dispensaries that are listed at the end of this brochure. **If you go to another PHCc or dispensary they will charge you more for your treatment.**

In a medical emergency, call NEXtCARE Lebanon 01 504020 other phone numbers listed in this brochure will give you information about health and social support, if you are a victim of sexual assault or violence or for any other emergency.

What if I am an unregistered Syrian refugee/awaiting registration?

Not registered Syrians have access to some subsidized health services and assistance at the PHCc listed in this brochure, for example free vaccinations for children. However, other PHCc or dispensaries may ask you equal contribution to health care treatment similar to Lebanese patients.

Is the Lebanese health system different from the Syrian health system?

Yes. The Lebanese health system is very different from the Syrian health system. It is highly privatized and registered Syrian refugees have to pay a contribution towards their health care, in the same way that Lebanese do.

IF YOU NEED TO SEE A DOCTOR

If you need to see a doctor, you should contact the PHCc or dispensary in advance to check if there is a doctor available that day and make an appointment. Check the list of PHCc or dispensaries below.

DOCTOR'S FEES

When you go to see a doctor at a PHCc or a dispensary you will be charged between 3,000 LL – 5,000 LL for a consultation. UNHCR's partners pay the remainder of your consultation fees.

For laboratory and diagnostic tests, UNHCR covers up to 85% of the cost for children under 5 years old, elderly over 60 years old, pregnant women and other vulnerable individuals.

The remaining 15% of the cost must be paid by the patient. All other individuals are required to pay 100% of their medical costs. Please see the table below for more information.

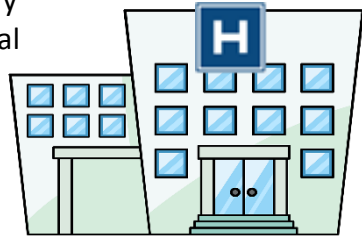
Service	What you pay
Vaccines	Free at all PHC centers and dispensaries
Consultation	3,000 – 5,000 LBP
Acute medications	Free
Chronic medications (diabetes, cardiac conditions, hypertension, asthma, epilepsy, etc.)	1,000 LBP per visit (handling fee)
Family planning (Insertion of IUD, pills, condoms)	Free
2 ultrasounds for pregnant women	Free
Dental care	Subsidised. Please refer to the PHC or dispensary for the exact costs.
Mental health services and medication	Free
Laboratory and diagnostic tests	15% of the cost for <ul style="list-style-type: none"> ▪ For children under 5 years ▪ Persons over 60 ▪ Persons with disabilities ▪ Pregnant women 10% of the cost for those refugees with specific needs who cannot afford it. Other refugees will pay 100% of the cost of Laboratory and diagnostic tests.

IF YOU NEED TO GO TO HOSPITAL

What do I do if I need to go to hospital?

First, go to a PHCc or a dispensary before you go to hospital.

If a doctor in a PHCc or a dispensary recommends your admission to a hospital for inpatient care, you should obtain approval from **NEXtCARE** Lebanon which is UNHCR'S partner for Lebanon.



In a life-threatening emergency go straight to one of the hospitals listed on the back of this leaflet and then call **NEXtCARE** from the hospital, otherwise we cannot assist you financially with your medical bills.

NEXtCARE hotline is
01 504020
24 hours 7/7



If I need to go to Hospital, will an ambulance take me?

The ambulance will take the patient to hospital only in life threatening situations or when the patient cannot travel in a seated position by car.

The Lebanese Red Cross provides ambulance services in Lebanon. The number to call is three digits **140**



HOSPITAL FEES

Will UNHCR pay my hospital bill?

UNHCR pays up to 75% of the total cost of the following hospital services only:

- Life-saving emergencies
- Giving birth
- Care for newborn babies

You will have to pay the remaining 25% of the cost. Please ask **NEXtCARE** you what would be your contribution part for the hospital bill.

If you receive any other hospital service, which is not approved by NEXtCARE you will have to pay the total cost of your hospital bill.

If you need a very expensive hospital treatment, (e.g. disc disease, open heart surgery), or elective medical interventions, UNHCR's Exceptional Care Committee must first approve treatment before it will agree to cover up to 75% of the cost.

The Committee will consider:

- The need for and adequacy of the suggested treatment
- The cost and the need for financial assistance
- Feasibility of the treatment plan and prognosis

You should go to the hospitals listed at the end of this brochure because you will have to pay more if you go to any other hospital. Remember to call **NEXtCARE** before admission to the hospital so we can assist you financially with your medical bills. We will not reimburse any payments you may have advanced.

DOCUMENTS TO TAKE WITH YOU TO THE DOCTOR OR TO THE HOSPITAL

- A valid ID document OR
- Your UNHCR Registration Certificate ("UN Paper")

PREGNANT WOMEN

I am pregnant. What services and assistance can I get?

You can get pregnancy care at PHCc and dispensaries as well as two free ultrasounds. You will be provided with supplements needed for your and your baby's health.

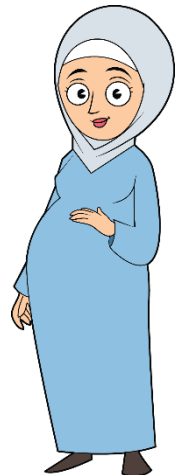
If you are pregnant, you should go to a PHCc at least 4 times before you give birth. You should go to the PHCc that is closest to your address.

UNHCR covers up to 85% of the cost of laboratory and diagnostic tests and 4 consultations for pregnant women. You will also have access to breastfeeding and personal hygiene awareness sessions and access to free family planning services after you deliver your baby and one postnatal consultation.

In addition, UNHCR will cover 75% of the cost of your delivery.

When you are pregnant and you approach the PHCc for consultation you will be provided with a **Pregnant Card**. You **will have to keep it with you each time you come for a doctor's visit and when you come to the hospital to deliver your baby.**

During your pregnancy the doctor will prescribe you some supplements like calcium and iron. Don't forget to take them for your health and the health of your baby! Continue to take them as long as you are breastfeeding your baby. You will also need to visit your PHCc or dispensary one month after you give birth for post natal care to ensure your wellbeing.



بطاقة
المرأة الحامل



معلومات شخصية:
رقم بطاقة الأم المتحدة: _____
الاسم الثلاثي: _____
اسم الزوج: _____
مكان الإقامة: _____
التاريخ الولادي: _____
عند:

عدد الحمل:
عدد الإجهاضات:
القيصرية:
الطول الصافي: _____
تاريخ آخر دورة شهرية: _____
طريقة الوضع المتوقعة: _____
دواعي الولادة القيصرية: _____
التاريخ الطبي: _____
سوابق طبية: _____
أدوية مزمنة: _____
سوابق جراحية: _____
حساسية: كلا نعم حدث:

عدد الولادات (المتكبرة عند الأوان) _____
عدد المواليد الأحياء:
تشوهات خلقية:
التاريخ المتوقع للولادة: _____
طبيعية قيصرية

اسم المركز الصحي: _____
المزمنة الأخرى: _____

التاريخ	الوزن	الضغط	البروتين في البول	السكر في البول	فحص البول	دم مخفي
عدد أسابيع الحمل	ارتفاع الرحم	وضع الجنين	نضج الجنين	سكر الدم	التهابات	الهيموغلوبين Hb

Pregnant Card

CHRONIC DISEASES

Chronic disease such as diabetes, cardiac conditions, hypertension. Asthma, epilepsy, etc:

If you have a chronic disease such as diabetes, cardiac conditions, hypertension, asthma, epilepsy, you should go to see a doctor at a PHCc or a dispensary for chronic disease control.

Locate a PHCc from YMCA network near you and register. Visit regularly and the health center will provide you with the necessary medication every month. This will manage your chronic condition and prevent further health consequences.

Chronic diseases such as cancer, thalassemia, etc:

UNHCR does not pay for chronic diseases that require repeated hospitalization, such as cancer, thalassemia or renal dialysis. If you have one of these conditions, you should go to see a Doctor at a PHCc or a dispensary to manage your condition.

In addition, UNHCR does not pay for the following treatments:

- High cost treatment when a less costly alternative treatment is equally effective and available

- Experimental, non-evidence based treatment
- Organ transplant
- Infertility treatment
- Cosmetic/plastic/reconstructive surgery
- Long term sustaining tertiary care such as treatment/rehabilitation of complications of chronic degenerative diseases, immunosuppressive treatment, new cases of hemodialysis (unless one time for life-saving), thalassemia treatment (except for life-saving blood transfusion), multiple sclerosis, etc.
- Conditions that can be treated at a PHC or dispensary
- End-Mid stage cancer (including surgery and chemotherapy)
- Long term treatment requiring nursing care

PHYSICAL OR MENTAL DISABILITIES

I have a disabled child/family member. What kind of support and services are available?

UNHCR and partners will pay 85% of the cost of laboratory and diagnostic tests for patients with physical or mental disabilities. The remaining 15% of the cost will be paid by the patient.



Various community support services are available. Go to your nearest PHCc or dispensary for a consultation and for more information.

Rehabilitation Institutions for persons with specific needs

Handicap International	76-426 676
Handicap Forum – Tripoli Mina next to Evento restaurant	03-654199 (on Mondays)
Arc En Ciel (Free services)	Mr. Nidal Khoury Tel: 06-693030 (Technical and mobility aids; physiotherapy sessions)

TUBERCULOSIS

I have Tuberculosis. What should I do?

You should attend a Centre for Tuberculosis treatment. Treatment is available for free. UNHCR's partners will support you for laboratory and diagnostic tests. Your family can also be tested for free.

Centres for Treatment of Tuberculosis in the North

Centre	Address	Phone	Opening hours
Tripoli: Lutte contre la tuberculose	Zahrieh facing Sir Dennieh Garage, first floor	06-424255	Mon-Saturday 8.00 – 12.00pm
TB treatment center	Halba Governmental Hospital, Halba	06-693944	Mon-Saturday 8.00 – 12.00

Please call before for appointment

HIV

I am HIV positive. What treatment, support and services are available?

If you require treatment, you must first contact UNHCR **health staff**, who will give you the necessary information and refer you to the National Centre for treatment. Treatment is free. Please request a confidential appointment with the UNHCR Office in North. You are not required to disclose information in order to seek an appointment

All cases are treated with the strictest of confidentiality.

I think I might have been infected with HIV. What should I do?

If you suspect you have been infected with HIV, you should go immediately to the following centre to receive care. It is important that you get preventative treatment as soon as possible, preferably within 24 hours of being infected.

Voluntary Counselling and testing for HIV

Centre	Phone
Al Iman PHC, El Mina, Al Masaken El Chaabiya, near Ali Ben Taleb mosque, Tripoli	06-211770
SIDC, Sin El Fil 1st Floor Daou Bldg., Youssef Karam Str., Sin El Fil ,Mount Lebanon	Tel/Fax: 01-482428, 01-480714
Dar El Fatwa Beirut, Aicha Bakkar.	01-785400
Hariri Hospital, Beirut, Jnah.	01-830000 (1067)

LEISHMANIASIS

I have Leishmaniasis. What should I do?

If you have Leishmaniasis, you should seek treatment at one of the following hospitals: Medication for Leishmania treatment is for free from the Ministry of Public Health and UNHCR pays for your consultation fees. You have to contribute only LBP 3,000.

Hospital that treats Leishmaniasis

Area	Hospital/Doctor	Contact Numbers	Treating Hours
Halba	Halba Governmental hospital	06-693944	Sat 1.00-2.00pm

The treatment for leishmaniasis is also available for free at Tripoli Governmental hospitals but consultations are not subsidized.

PHCc AND DISPENSARIES IN THE NORTH

Please ask for the list of Primary Health centers in the North “YOUR HEALTH” leaflet.

VACCINATIONS FOR CHILDREN

Can my child receive vaccinations in Lebanon? Where?

Yes. Vaccinations for children are provided **for free** by the Ministry of Public Health through the centers listed below. First dose vaccinations of polio, measles and Vit A are available for free at all UNHCR Reception Centers. Vaccines are essential to your child's health and development and you should ensure your child receives all essential vaccinations using the vaccination schedule below:



National Lebanese Vaccination Schedule	
Age	Vaccine
At birth	Hepatitis B - First dose
2 months	IPV – First dose Pentavalent (diphtheria-pertussis-tetanus-hepatitis B-Hib) – First dose
4 months	OPV – Second dose Pentavalent vaccine (diphtheria-pertussis-tetanus-hepatitis B-Hib) – Second dose
6 months	OPV – Third dose Pentavalent vaccine (diphtheria- tetanus-pertussis-hepatitis B-Hib) – Third dose
9 months	Measles – zero dose
12 months	Measles, Mumps and Rubella (MMR) – First dose
18 months	OPV First booster dose Pentavalent vaccine (diphtheria- tetanus-pertussis-hepatitis B-Hib) – First booster dose Measles, Mumps and Rubella (MMR) – Second dose
4-5 years	OPV – Second booster dose DTP (diphtheria-tetanus-pertussis)
10-12 years	OPV - Third booster dose DT (diphtheria-tetanus) – Third booster dose
16-18 years	OPV- Fourth booster dose DT (diphtheria-tetanus) – Fourth booster dose

HOSPITALS IN THE NORTH

Hospitals	Address	Phone number
Notre Dame de la Paix Hospital	Akkar, Qobayat	06-351670
Tripoli Governmental Hospital	Kobbe, Tripoli	06-385300
Mazloun Hospital (no deliveries)	Maarad, near Al Saray, Tripoli	06-410025
Al Salam Hospital ONLY for burns)	Behsas, Tripoli	06-411700
Sir El Dinnieh Governmental Hospital	Sir El Dinnieh, Tripoli	06-491811
El Kheir Hospital	Minieh, Tripoli	06-461444
Dar El Chifa'a	Abi Samra, Tripoli	06-429595
Al Koura Hospital	Koura	06 930 981
Heart Hospital (only for cardiac cases)	Tripoli	06-411 750
Al Hanan Hospital	Meitein, Tripoli	06-200527

Very Important!!!!

After having a baby, it is recommended to wait at least 3 years before getting pregnant again.

If you do this, your newborn baby is less likely to die or be born too early and you will all be healthier.

Do not put at risk the health of the child and the mother.

Go to the nearest health center for family planning counselling.

CONTACT NUMBERS AND HOTLINES OF PARTNERS

For medical emergency in the North, call **NEXtCARE Hotline** on **01 504020**. There are other hotlines available as indicated below.

Please ask for the Services Notes for contact numbers for NGOs and partners providing other services for Syrian refugees in North.



Area	Partner	Hotline
North	NEXtCARE Lebanon 24 hours 7/7	01 504020
Tripoli	Restart Center	76 817 961 06 411 451
North	IMC	70 448 063

CONTACT NUMBERS FOR SOCIAL SUPPORT

UNHCR Partners if you need Social Support			
Centre	Person in charge	Phone number	Address
MOSA (Tripoli)	Zeina Naboulsi	06-435020	Tripoli – NejmeH Square
Islamic Coalition	Abou Firas	70-107119	Tripoli
Women Charity League	Saadiya Abdul Aziz Ghneim	06-691268	Akkar- Halba-facing Byblos Bank.

HOW REGISTERED REFUGEES ACCESS MEDICAL TREATMENT IN LEBANON

STEP 1

Contact a Primary Health Center or dispensary to see a doctor.



STEP 2

If your doctor says you need to go to the hospital, Contact NEXtCARE Lebanon.



In a life-threatening emergency you can go straight to a Hospital but remember to contact NEXtCARE

hotline on:

01 504020

24 hours 7/7

Health care services supported by UNHCR in Lebanon are funded by the generous contributions from Canada, European Union, France, Germany, Japan, the United Kingdom and the United States of America and private donors from Italy



المساعدات الإنسانية
والحماية المدنية



من الشعب الياباني
From the People of Japan

من الشعب البريطاني