

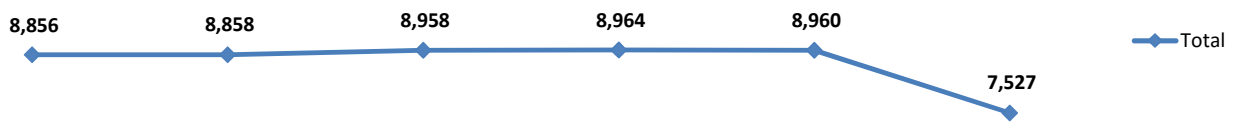
INTRODUCTION

The Site Tracker is a gap analysis tool developed to identify gaps in service delivery and assistance in IDP camps. This tool only covers camps where IOM CCCM Site Facilitators are deployed to support in camp management with partners soon to take over some areas. It enables stakeholders track each other's weekly activities and minimize duplication of efforts, in support of intra-sector coordination, to improve communication and to strengthen the quality of services delivered to IDPs. The DTM Site Tracker contributes to speed up the time of response by concerned partners when their intervention is needed and avoid unnecessary delays.

This report must not be misconstrued to represent the situation of all the IDP camps in North-Eastern Nigeria.

16 Sites in GIREI, YOLA SOUTH, YOLA NORTH and FUFURE, LGAs in Adamawa State in review this week: AD_5005,EYN CHURCH VINIKILANG, AD_5034,NANA VILLA, AD_5003,MALKOHI CAMP, AD_5037,CHEKAMIDERI, AD_5032,SEGERE DUTSE, AD_5004,MALKOHI VILLAGE, AD_5008,ST THERESAS CATHEDRAL, AD_5027,DOKKITILLA WUROCHEKKE, AD_5031,WURO AHI, AD_5028,HULLERE, AD_5035,WADAI, AD_5006,DAWARE CAMP, AD_5036,UNGWAN ABUJA, AD_5029,SABON DEAL NGUORORE, AD_5030,KILBAJE EXTENSION, AD_5038,LOWCOST QUARTERS.

Trend of the Number of IDP's per week



| Week | 22-May-17 | 29-May-17 | 05-Jun-17 | 12-Jun-17 | 19-Jun-17 | 26-Jun-17 |
|------|-----------|-----------|-----------|-----------|-----------|-----------|
| Week | Week 21 | Week 22 | Week 23 | Week 24 | Week 25 | Week 26 |

KEY FINDINGS

Water supply is insufficient in a lot of sites. Latrines and showers need to be added in some sites. A lot of school children do not have access to education because of the absence of schools in the camps or the inability of their parents to pay their fees.



7,527 Total number of IDP's residing in assessed sites for the week in review

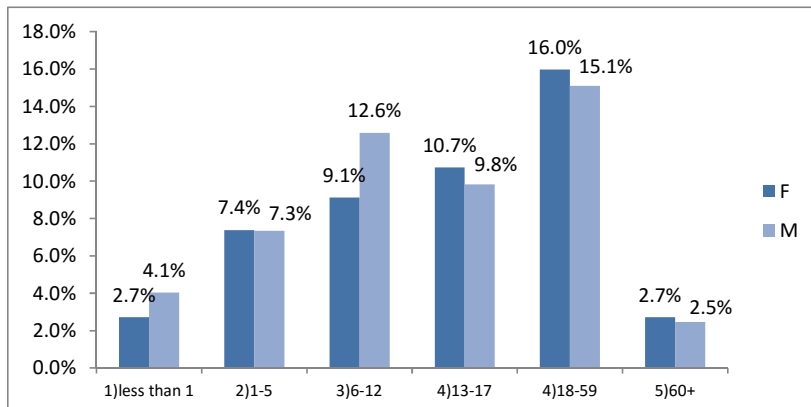


22% non-functional latrines
9% non-functional bathrooms
8% non-functional water points

Week in review (26 June to 2 July 2017 (Week 26))



| Summary on population demographic | | | | | | | | |
|-----------------------------------|------------|-------------|----------|-----------|---------|---------|---------|-----------------------|
| Number of Households | Breakdown | Infants | Children | Pre-Teens | Teens | Adults | Elderly | Number of Individuals |
| | Gender/age | Less than 1 | (1-5) | (6-12) | (13-17) | (18-59) | (60+) | |
| 1,739 | Male | 305 | 553 | 947 | 740 | 1136 | 185 | 7,527 |
| | Female | 204 | 555 | 687 | 808 | 1203 | 204 | |
| | Total | 509 | 1108 | 1634 | 1548 | 2339 | 389 | |



Graph 1: Age group and sex breakdown

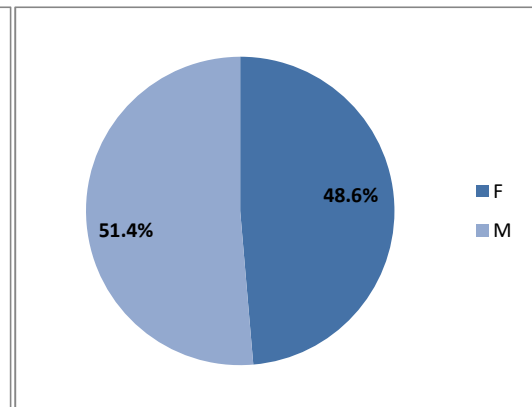


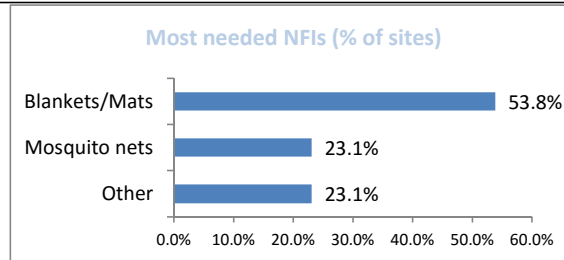
Chart 1: Gender distribution



EMERGENCY SHELTER & NFI

Summary of activities carried out and gaps seen:

| SSID | SiteName | Comments on Shelter/NFI section |
|---------|-----------------------|---|
| AD_S005 | EYN CHURCH VINIKILANG | There is need for 24 NFI kits for the 24 households onsite. |
| AD_S037 | CHEKAMIDERI | There is need for blankets and mosquito nets for 58 households onsite. |
| AD_S032 | SEGERE DUTSE | kitchen sets is needed for 21 households. |
| AD_S004 | MALKOHI VILLAGE | Biometric Card- some of the IDP's were not captured. Almost 200 households were not registered. |
| AD_S028 | HULLERE | 7 house holds are in need of blankets/mats. |
| AD_S006 | DAWARE CAMP | there still need for NFI for the new idps in daware/unguwan shuwa |
| AD_S036 | UNGWAN ABUJA | need for NFI and fertilizer for farming because majority of them are farmers on site |
| AD_S029 | SABON DEAL NGURORE | 27 Kitchen sets are needed on site |
| AD_S030 | KILBAJE EXTENSION | 29 Sets of blankets/mats are needed on site |
| AD_S038 | LOWCOST QUARTERS | need of blankets hygiene kits mosquito nets and buckets |



Graph 2: Needed NFIs



WASH

Summary of activities carried out during week in review:

| SSID | SiteName | Comments on WASH section |
|---------|-----------------------|--|
| AD_S005 | EYN CHURCH VINIKILANG | There is need for 6 latrines and 2 more shower rooms onsite. |
| AD_S034 | NANA VILLA | There is need for 3 latrines and 3 showers onsite. |
| AD_S003 | MALKOHI CAMP | there is need for drainage in the site. And 22 latrines need to be evacuated. |
| AD_S037 | CHEKAMIDERI | The newly constructed shelters for 23 households need 4 latrines and 4 showers. Also, there is need for source of drinking water onsite. |
| AD_S032 | SEGERE DUTSE | 2 latrines , 2 shower rooms as well as source of drinking water is needed onsite. |
| AD_S004 | MALKOHI VILLAGE | There is need for Additional 5 water points and 2 boreholes need to be repaired. |
| AD_S008 | ST THERESAS CATHEDRAL | There is need for 2 additional water storage. |
| AD_S006 | DAWARE CAMP | One faulty borehole needs to be repaired. |
| AD_S036 | UNGWAN ABUJA | More latrines and showers are needed |
| AD_S030 | KILBAJE EXTENSION | there is need for surface pump on site. |
| AD_S038 | LOWCOST QUARTERS | need of portable water point on site |

Gaps identified on sites

| | | |
|----------------------------------|-----|--------|
| # of functional latrines | 177 | 78.3% |
| # of non-functional latrines | 49 | 21.7% |
| Total | 226 | 100.0% |
| # of functional bathrooms | 157 | 90.8% |
| # of non-functional bathrooms | 16 | 9.2% |
| Total | 173 | 100.0% |
| # of functional water points | 22 | 91.7% |
| # of non-functional water points | 2 | 8.3% |
| Total | 24 | 100.0% |

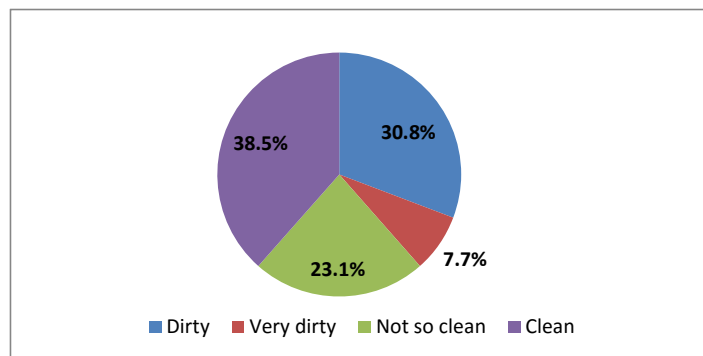


Chart 2: Frequency of evacuation of toilets

| Common means of disposal | % |
|--------------------------|-------|
| Very clean | 0.0% |
| Clean | 43.8% |
| Not so | 25.0% |
| Dirty | 25.0% |
| Very dirty | 6.3% |



Summary of activities carried out and gaps seen:

| SSID | SiteName | Comments on Protection section |
|---------|-----------------|--|
| AD_S004 | MALKOHI VILLAGE | 6 solar lights need repairs and there is need for additional 3 solar . |

| Activities for the week under review | | | | |
|--------------------------------------|-----------------|------------------------------------|------|----------|
| SSID | SiteName | Sub-Category | QTTY | Provider |
| AD_S003 | MALKOHI CAMP | Recreational activity for children | 1 | IOM |
| AD_S003 | MALKOHI CAMP | Counselling | 1 | IOM |
| AD_S003 | MALKOHI CAMP | PSS | 1 | IOM |
| AD_S004 | MALKOHI VILLAGE | PSS | 1 | IOM |
| AD_S004 | MALKOHI VILLAGE | Focus group meeting | 1 | IOM |
| AD_S019 | FUFORE CAMP | Focus group meeting | | IOM |
| AD_S019 | FUFORE CAMP | Recreational activity for women | | IOM |
| AD_S031 | WURO AHI | Focus group meeting | | IOM |
| AD_S031 | WURO AHI | Recreational activity for children | | IOM |
| AD_S035 | WADAI | Focus group meeting | 1 | IOM |
| AD_S035 | WADAI | Recreational activity for women | 1 | IOM |
| AD_S006 | DAWARE CAMP | Focus group meeting | | IOM |
| AD_S006 | DAWARE CAMP | Recreational activity for children | | IOM |
| AD_S006 | DAWARE CAMP | Recreational activity for women | | IOM |
| AD_S006 | DAWARE CAMP | Counselling | | IOM |

Security presence (% of sites)

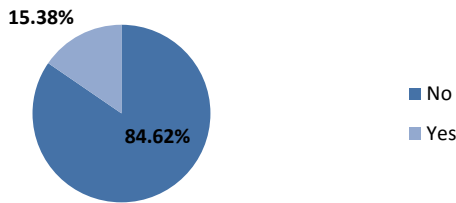
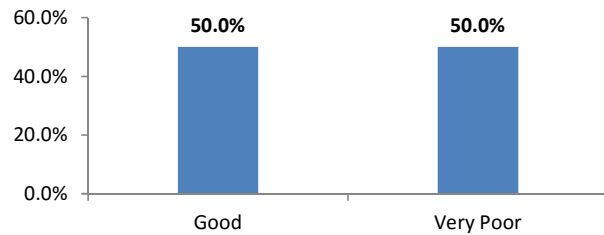


Chart 3: Security presence on sites

IDP's relationship with security



Graph 3: Security incidents reported on sites

| Unaccompanied/Separated Children | | | | | | | |
|----------------------------------|------|------------------------|--------|--------------------|--------|----------------------------------|--------|
| Total | | Unaccompanied Children | | Separated Children | | Unaccompanied Children In Foster | |
| | | Male | Female | Male | Female | Male | Female |
| # | 40 | 16 | 21 | 2 | 1 | - | - |
| % | 100% | 40.0% | 52.5% | 5.0% | 2.5% | 0.0% | 0.0% |

*The current CCCM monitoring does not enable to track registration status of a UASC by a Child Protection organization and subsequent monitoring.



Summary of activities carried out and gaps seen:

| SSID | SiteName | Comments on Education section |
|---------|-----------------------|---|
| AD_S005 | EYN CHURCH VINIKILANG | There is need for educational support for about 32 children on site. |
| AD_S034 | NANA VILLA | About 28 children onsite need educational support. |
| AD_S003 | MALKOHI CAMP | 326 Adults need to be enrolled in to secondary school. |
| AD_S037 | CHEKAMIDERI | There is need for educational support for about 78 children in various schools. |
| AD_S032 | SEGERE DUTSE | About 31 children in various schools need to be supported with educational materials. |
| AD_S004 | MALKOHI VILLAGE | 351 children at site don't have access to Education. |
| AD_S027 | DOKKITILLA WUROCHEKKE | 17 children on site dont have access to education. |
| AD_S031 | WURO AHI | 2 instructors are needed and educational materials are also needed. |
| AD_S028 | HULLERE | 17 children on site dont have access to education. |
| AD_S035 | WADAI | school is needed on site |
| AD_S006 | DAWARE CAMP | school shelter need repair and need of school material like school bags school uniforms school sandals and writing material |
| AD_S036 | UNGWAN ABUJA | need of school bags school uniforms school sandals and writing material on site |
| AD_S029 | SABON DEAL NGURORE | 50 children on site dont have access to education. |
| AD_S030 | KILBAJE EXTENSION | 13 children on site don't have access to education. |
| AD_S038 | LOWCOST QUARTERS | need of school bags school sandals and school uniforms on site |

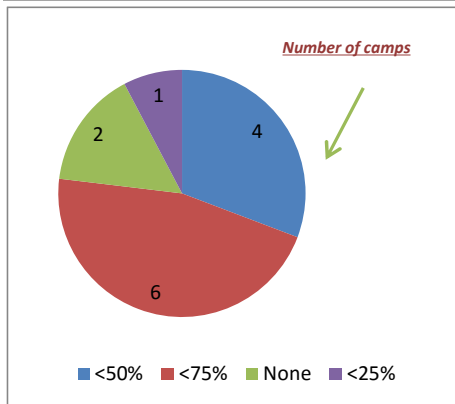


Chart 4: % children attending schools at sites

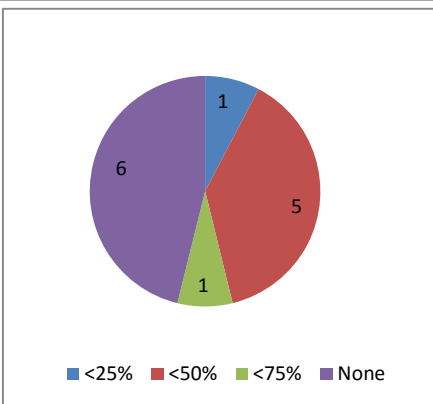


Chart 5: % availability of instructional material

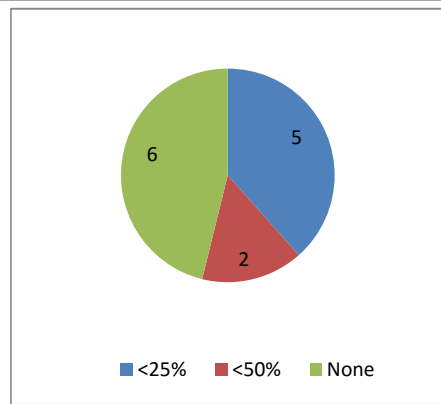


Chart 6: % children with access to facilities



HEALTH, FOOD & NUTRITION

Summary of activities carried out and gaps seen:

| SSID | SiteName | Comments on Health, Food & Nutrition section |
|---------|-----------------------|---|
| AD_S005 | EYN CHURCH VINIKILANG | More food items, food supplements and health care services is needed onsite. |
| AD_S034 | NANA VILLA | Food supply, food supplements and health care services need to be improved on site. |
| AD_S037 | CHEKAMIDERI | There is need for health services, food items and food supplements on site. |
| AD_S032 | SEGERE DUTSE | There is need for food items for 21 households and food supplements for children, pregnant women and lactating mothers. |
| AD_S031 | WURO AHI | Access to medical health care is needed on site. |
| AD_S035 | WADAI | They need to have access to medical health care on site |
| AD_S006 | DAWARE CAMP | There is need for cough syrup, anti malaria amoxicillin ,and supplementary feeding for pregnant women and lactating mothers |
| AD_S036 | UNGWAN ABUJA | They need access to medical health services and food items |
| AD_S038 | LOWCOST QUARTERS | Supplementary feeding for pregnant women and lactating mothers is needed. |

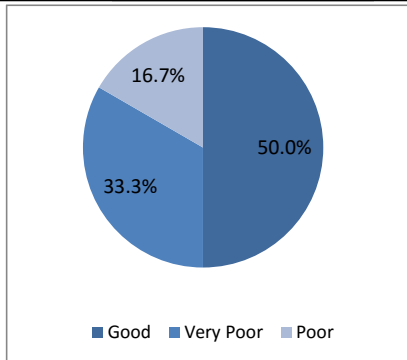
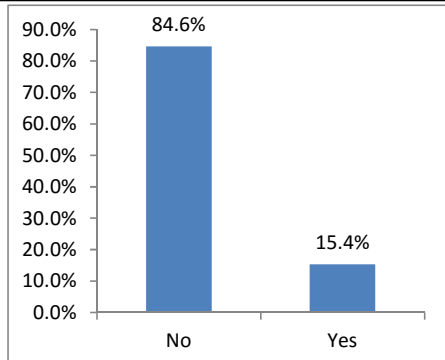


Chart 7: Quality of healthcare delivery in sites



Graph 4: Sites mentioning disease outbreak

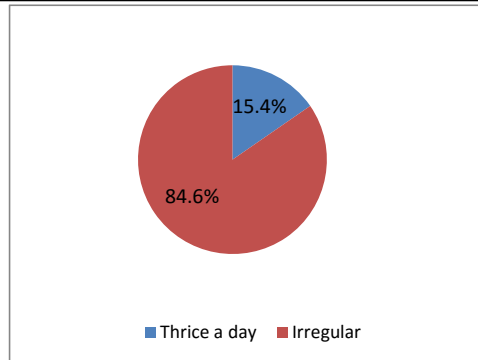


Chart 8: Average number of meals per day in sites

For more information:

CONTACTS

mmugogo@iom.int 08121565300 | fdiab@iom.int 09075070001

