

# SNAPSHOT:

Intention Survey and Needs Assessment

# Amplifying the voice of IDP s

Armed Confrontations and Displacement in Marawi (AFP vs Pro-ISIS militants)



**14,491** heads of families representing  
**18.47%** of **78,466** displaced families

**25** agencies & organizations

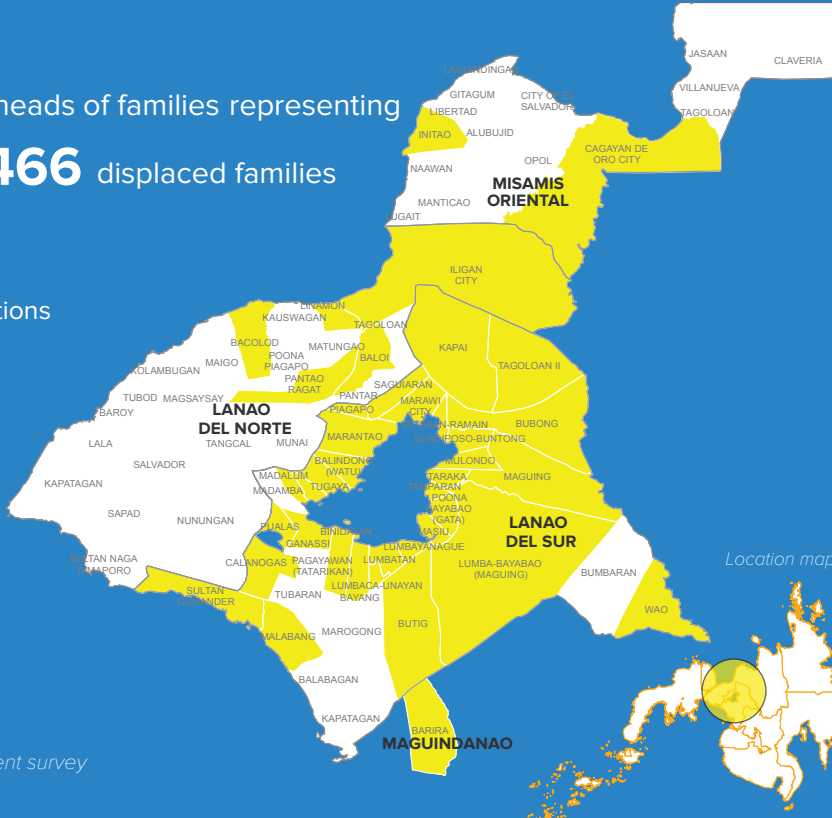
**205** field enumerators

Survey period  
**21-28 August 2017**

**30** Municipalities

**3** Cities

Municipalities reached by intent survey



## Updates on assistance

(based on ongoing protection monitoring by UNHCR and protection partners)

Home-based IDPs and those in community-based facilities receive assistance less often than those staying in Evacuation Centers. In Malabang, Saguiaran, Kolambugan, Opol, Baloi, selected barangays in Iligan City and selected barangays in Cagayan de Oro City, Humanitarian assistance was last received between 1-2 months ago.

## Key advocacy / Protection Messages

- Improve protection and access to assistance, particularly for home-based IDPs and IDPs in community-based ECs in terms of type and frequency to meet needs given that 91% primarily depend on relief assistance to meet basic needs. Particular attention should be given to those who have received the least assistance in the past 1-2 months.
- Priority needs vary according to gender roles performed by individuals in coping with their situation while in displacement. Age-specific and gender-specific assessment of needs and prioritization of response should be reinforced.

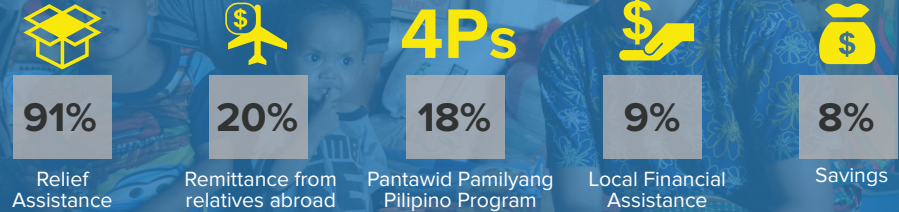
Participating Agencies:  
1 Tabang, Al-Mujadilah Foundation, CFSI, EcoWeb, Inc., Gitib, Inc., IDEALS, IOM, Kalimudan Foundation, Kapamagogopa, Inc., LDSPC, LYC, MARADECA, Moropreneur, MuCaard, OCHA, Oxfam, RCBW, RDRRAC, RIDO, Ranaw Rescue Team, Samaritan's Purse, UNHCR, UNICEF, UnYPhil-Women, WFP

DATE CREATED: 12 October 2017

FEEDBACK: phicopr@unhcr.org

## Access to Humanitarian Assistance

IDPs' Top 5 means of meeting basic needs



Note: The percentage indicated represents the population receiving the assistance. Respondents answered on the basis of type of assistance received at least one since their time of displacement. The respondents could select multiple responses.

## Topmost humanitarian assistance received (since displacement)

### Evacuation Centers



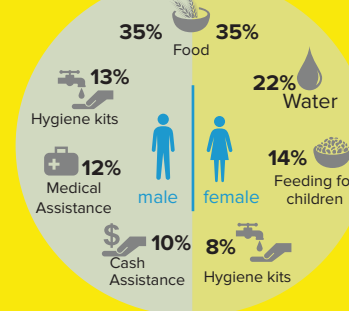
### Home-based IDPs



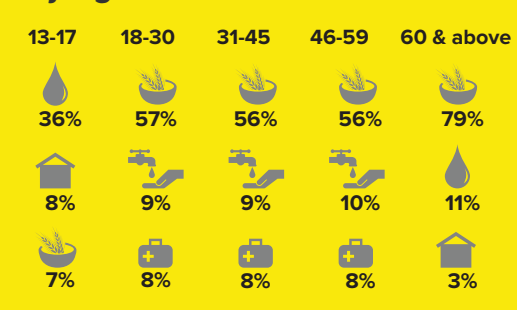
### Community-based ECs



### By Gender



### By Age Bracket



DISCLAIMER: The boundaries and names shown and the designations used on this map do not imply official endorsement or acceptance by the United Nations.