

COMMUNITY RESILIENCE, LIVELIHOODS AND HEALTH FOR RECOVERY AND PEACE IN CONFLICT-AFFECTED AREAS OF **DONETSK OBLAST**

Concept Note for an Inter-agency Area-Based Initiative

January 2019 - December 2022





Summary

As Ukraine enters its fifth year of crisis, the negative impact of the conflict in eastern Ukraine continues to be felt particularly in areas along the “contact line”. These areas remain economically depressed, despite extensive humanitarian interventions and initial recovery efforts aimed at boosting community resilience, employment, health services, protection and livelihoods. For conflict-affected populations, the limited tangible improvements in their living conditions is fuelling frustration, undermining social cohesion and leading to out-migration of able bodied members of these communities.

Southern Donetsk oblast (from Marinka to Mariupol) is one of the areas still suffering from the impact of the conflict, a situation compounded by pre-conflict systemic challenges and economic and logistical isolation. With the major urban centres in Donetsk and Luhansk oblasts now outside of Government control, the port city of Mariupol has gained prominence as an employment hub and a haven for internally displaced persons (IDP). The city’s infrastructure, however, has degraded by the lack of maintenance prior to the conflict and the forced closure of factories, not to mention the damage inflicted by the conflict. Recent incidents in the Azov Sea have put the economic potential of southern Donetsk (as well as coastal areas of Zaporizhia and Kherson oblasts) under further strain.

Humanitarian and recovery needs assessments conducted by various actors in the last four years have clearly demonstrated the compounded negative impact of pre-2014 systemic problems and the conflict. When it comes to IDPs and other conflict-affected communities, different surveys have shown that housing, employment and health remain the overriding concerns. In the specific case of southern Donetsk oblast, assessments have also demonstrated that, with Donetsk city (the main market and source of employment and social services before the conflict) now being cut off by a “contact line”, residents of this sub-region have had to look for alternatives. In doing so, conflict-affected populations in the southern part of Donetsk oblast are incurring

heavy costs, as public service providers, markets and employment opportunities, are now located further away and available transportation networks are not necessarily conducive for such longer commuting.

In view of this, major donors to Ukraine, have established policies and/or funded programmes aimed at encouraging economic recovery, as well as enhancing community resilience, social cohesion and service delivery. For example, in 2017 the European Union set out an EU-ECHO Joint Humanitarian Development Framework (JHDF) for 2017-2020 for Ukraine with human security (including housing and the rehabilitation of critical infrastructure), economic development and support to livelihoods, and health as the main priorities. On the part of the UN system, a UN-Government of Ukraine Partnership Framework (UNPF) was established for the period 2018-2022 and it includes a “pillar” on human security, social cohesion and recovery, with a special focus on eastern Ukraine.

*Within the UNPF, **four UN agencies are partnering together** in order to approach the challenges in a more integrated and holistic manner. Based on their respective mandates, areas of expertise and comparative advantages, **FAO, ILO, UNHCR, and WHO** have agreed to engage in an area-based, joined up programme covering a limited area of southern Donetsk oblast. In doing so, they will ensure synergies between humanitarian and development partners, to make sure that conflict-affected individuals and communities enhance their resilience and are empowered to address outstanding humanitarian needs while moving gradually towards recovery and development. Over the course of four years and based on several participatory mapping exercises, the four agencies will implement projects within a coherent and comprehensive area-based programme with three common objectives:*

- 1) To promote economic recovery through decent employment, livelihood opportunities and revitalization of the agricultural sector;***
- 2) To improve access and quality of health services;***
- 3) To reinforce community resilience and their protection.***



UNHCR World Health
The UN Refugee Agency Organization

Overall Objective	Socio-economic revitalization of south and west Donetsk oblast through agriculture, employment, health and community resilience		
Project Duration	4 years (48 months) with one-year project cycles. Expected commencement date: February 2019		
Participating UN agencies and focal points	Food and Agriculture Organization (FAO) -- Khushnid Sattarov khushnid.sattarov@fao.org International Labour Organization (ILO) -- Sergiy Savchuk savchuk@ilo.org United Nations High Commissioner for Refugees (UNHCR) -- Igor Chantefort chantefo@unhcr.org World Health Organization (WHO) -- Caroline Clarinval clarinvalc@who.int		
Target geographic zones	South and West Donetsk Area ¹ : Mariupol, Volnovakha and Marinka raions of Donetsk oblast		
Focus areas	Agriculture, Health, Employment, Protection and Housing		
Domains	Economic and Social Recovery, Humanitarian-Development Nexus (HDN), Early Recovery, Multi-partnerships, Peace-building and Social Cohesion		
Total program budget (4 years) by recipient organization	FAO: 4,200,000 USD\$ ILO: 3,492,860 USD\$ UNHCR: 2,062,500 USD\$ WHO: 5,581,380 USD\$	Amount requested from donors	FAO: 4,200,000 USD\$ ILO: 3,492,860 USD\$ UNHCR: 1,153,000 USD\$ WHO: 5,581,380 USD\$

FAO	ILO
<p><i>“Creation of enabling environment for economic recovery of the region through revitalization of the agricultural sector”</i></p> <ul style="list-style-type: none"> ➤ Agricultural value chains; ➤ Group-based agricultural production and processing; ➤ Farmer’s school; ➤ Effective and widely accepted system of agricultural advisory services; ➤ Access to finance for farmers; ➤ Access to traditional and non-traditional agricultural markets. 	<p><i>“Improve the performance of local economy by strengthening labour market governance”</i></p> <ul style="list-style-type: none"> ➤ Establishment of local employment partnerships; ➤ Modernization of State Employment Service (SES) services and delivery of models targeting conflict-affected youth and women; ➤ Self employment and Entrepreneurial support via Start and Improve Your Business (SIYB) and Biz-up programs; ➤ Tackle undeclared work and promote formalization of jobs.
WHO	UNHCR
<p><i>“Improving access and quality of essential healthcare services for most vulnerable populations living along the contact line”</i></p> <ul style="list-style-type: none"> ➤ Strengthening the national healthcare services at all levels. Building the capacity and capability of the healthcare system in the area of emergency healthcare services, infection prevention and control, mental health; ➤ Supporting the transformation of the healthcare system in the country; ➤ Equipping healthcare facilities with necessary; ➤ Strengthening the surveillance system; ➤ Supporting the displaced Medical University; 	<p><i>“Improve protection environment in conflict-affected and host communities through empowerment of its community members, providing shelter & targeted protection assistance to the most vulnerable persons”</i></p> <ul style="list-style-type: none"> ➤ Leading regional and national advocacy to ensure that the state protection is available to all the residents of Ukraine irrespective of the region of their residency, including protection from the effects of armed conflict, mine/UXO contamination;

¹According to classification developed by REACH http://www.reachresourcecentre.info/system/files/resource-documents/reach_ukr_situation_overview_aba_overview_july_2017_0.pdf.

	<ul style="list-style-type: none"> ➤ To facilitate access to state institutions for the most vulnerable contact-line residents and IDPs to settle protection issues as lack of personal documentation, suspension of social payments, violation of housing, land and property rights; ➤ Shelter repairs with the goal of providing durable housing solutions to conflict-affected persons and advocacy for longer-term housing solutions for IDPs; ➤ To facilitate access to social payments and legal assistance to the most vulnerable, particularly older persons and persons with disabilities; ➤ Supporting community centres to strengthen community resilience and build social capital; ➤ Strengthening the capacity of government institutions at the line of contact to respond to the current protection needs of IDP and contact line residents.
Main stakeholders	Government (central, regional, local and municipal authorities), civil society and community organizations
UNPF² outcome	<p>Pillar 1 (Sustainable economic growth, environment and employment)</p> <p>Pillar 2 (equitable access to quality and inclusive services and social protection)</p> <p>Pillar 4³ (Human security, social cohesion and recovery with particular focus on Eastern Ukraine)</p>
2030 Agenda for sustainable development	<p>SDG 2 (Zero Hunger),</p> <p>SDG 3 (Good Health and Well-Being),</p> <p>SDG 5 (Gender Equality),</p> <p>SDG 7 (Affordable and Clean Energy),</p> <p>SDG 8 (Decent Work and Economic Growth),</p> <p>SDG 9 (Industry, Innovation and Infrastructure),</p> <p>SDG 10 (Reduced Inequalities),</p> <p>SDG 15 (Life on Land),</p> <p>SDG 16 (Peace, Justice and Strong Institutions),</p> <p>SDG 17 (Partnerships for the Goals)</p>

² [Framework Programme of development between the UN and the Government of Ukraine \(UNDAF\) 2018 – 2022 \(UKR\)](#).

³ This concept note is also based on *Concept Note Recovery and Peacebuilding in Ukraine. Jobs for Peace and Resilience in Eastern Ukraine*, FAO-ILO-UNHCR, August 2017.

Context analysis:

The conflict in eastern Ukraine continues to affect communities, including the internally

Over the past five years, the port city of Mariupol has become the main social, cultural and economic center of conflict-divided Donetsk *oblast* but the ongoing military

Three participatory multi-agency scoping missions were conducted during the mobilization phase. Several interconnected cross-cutting issues were discovered, which justify a complex intervention conducted by several UN agencies:

- disruption of traditional supply chains, loss of sales markets for local goods;
- lack of systemic cooperation and coordination between regional and local labour market stakeholders to improve livelihoods and employment opportunities;
- limited access to financial opportunities;
- Insufficient active labour market measures targeting skills mismatch of youth and women, as well as vast proliferation of undeclared and under-declared work;
- Shortage of qualified personnel particularly in the health sector, lack of access to health care services, outdated and insufficient medical equipment;
- Devastation of agricultural capacities and lack of state-driven support;
- Increased vulnerability of less socially protected population due to the conflict.

displaced, located in the southern and western parts of Donetsk *oblast*. Since the start of the conflict, the division of Donetsk *oblast* between “government controlled” (GCA) and “non-government-controlled” (NGCA) areas has disrupted the socio-economic landscape as once economically interdependent micro and macro-level regions have been separated. Currently most international humanitarian assistance and development projects are concentrated in the northern areas of GCA Donetsk *oblast* (where the *oblast* administration has been relocated), while the surrounding areas of Mariupol, Volnovakha and Marinka are underserved and have received less attention from humanitarian and development agencies, as well as economic investment more generally. The latter is in part due to the fact that the conflict severed important transportation links, so the region (with a population over 500,000 people) is poorly served by train and airplane services. As a result, investment tends to flow elsewhere, especially to northern Donetsk *oblast* GCA.

conflict and the city’s proximity to the “contact line” (less than 20 km away) are having a considerable negative impact on economic productivity levels and the sustainable livelihoods of its residents. Depending mostly on a shrinking industrial sector (with a few large enterprises employing two-thirds of the city’s working-age population), Mariupol is desperate to identify immediate opportunities for economic diversification and job creation in order to

The Line of Contact (LOC) has disrupted health, education and market networks. [...] The separation of large NGCA urban centres from surrounding GCA settlements creates significant service access and delivery challenges within the assessed area, due to security concerns, lack of transport and departure of qualified personnel.

REACH Area Based Assessment in Government Controlled Areas within 5km of the Line of Contact. July 2017

provide for its 475,000 residents (with around 210,000 individuals estimated to be of working age) and the nearly 100,000 IDPs (of whom an estimated 50 per cent regularly travel between NGCA and GCA). While big companies are shedding jobs or closing down, businesses that try to maintain their competitiveness are unable to find sufficiently skilled workers and face logistical constraints. Also, an industrial city located on the Sea of Azov, with a vocation for metallurgy, machine building, trade and tourism, Mariupol heavily relies on its port and access to the sea trade routes.

Mariupol was once the hub for robust trade lines between farmers, agricultural enterprises in the surrounding regions of southern Donetsk, and larger firms in Donetsk city. Its wealthy sea port facilitated a robust export and import industry. This privileged situation was disrupted by the conflict in eastern Ukraine, which paired with the recent escalation of tensions on the Sea of Azov, compound the negative circumstances of the labour market in Mariupol, leading to an employment crisis.

Russia's construction of the Kerch Strait Bridge in May 2018 has resulted in the loss of 30% of maritime cargo at Ukraine's Azov Sea ports, including Mariupol. The growing number of checks of vessels going to/from the Ukrainian ports in Azov Sea also generates economic losses for both Ukrainian ports and the ship-owners dealing with them. The number of available job vacancies in the city is rapidly decreasing (down by 37% in 2016 compared to 2015 and further declining in 2017/18) and unemployment is mounting.

Due to the logistical limitations induced by the conflict and the restrictions on shipping movements through the Kerch Strait, the sea port has rapidly decreased its business

activities. The negative impact on large enterprises in the traditional economic sectors of the city has had a domino effect on small and medium enterprises (SME) in areas that have fewer opportunities to diversify and are thus compelled to lay off workers. Analysis of the structure of unemployment (based on the most recently available data) gives a clear signal of the urgency of the problem, as a significant proportion of those losing their jobs are qualified workers in the metallurgic sector (33% of the unemployed are skilled workers and operators of technical equipment and machinery).

While Mariupol city is highly industrialized, the surrounding areas in the south and west of Donetsk *oblast* rely mainly on agriculture,

The main issues to bringing produce to market were distance, lack of access to NGCA markets, problems with transportation and security concerns. The disruption of markets in West Donetsk, (...) was of particular importance as they were highly dependent on the main urban cities of the NGCA before the conflict.

REACH Area Based Assessment in Government Controlled Areas within 5km of the Line of Contact. July 2017

particularly on large-scale private agro holdings. The success of these agricultural enterprises depends on the accessibility and functionality of Mariupol's sea port. The recent escalation in the Kerch Strait creates a risk of economic stagnation in Mariupol. Furthermore, mine/UXO contamination has rendered some agricultural land unusable.

Before the conflict in eastern Ukraine, small local farmers would sell their products in the markets of Donetsk city, where they would benefit from a variety of social services, such as health care, higher education and legal advice. Large-scale industrial enterprises had a supply chain and market in the Russian Federation. However, the conflict disrupted these trade patterns and supply chains, causing mass unemployment, devastation of agricultural capacities and destruction of infrastructure⁴. The massive displacement (within Ukraine and abroad) resulting from the conflict, has also negatively impacted on agricultural production and industries.

With a total area of 1.3 million hectares of highly fertile farmlands in Donetsk *oblast* GCA, the agricultural sector plays a prominent role in the economy of the region, especially when it comes to economic resilience of the rural population. Nevertheless, due to the loss of the main centres of agricultural education on the NGCA, the region suffers from a lack of knowledgeable professionals for employment in well-paid positions in the agroholdings that operate in the area. What remains of the Agricultural College in Sartana is underequipped and cannot provide an adequate level of qualification to meet the labour market's demands.

Mine and explosive remnants of war (ERW) contamination restricts farmers' access to arable land. This has forced smallholders to organize in groups to maximize their collective efforts to keep their businesses running. Being inexperienced and facing extremely unfavorable economic conditions, newly

In addition, urban centers in GCAs of the Donbas, such as Mariupol and Kramatorsk, are isolated from their previous linkages with the dominant urban centers of the region (such as Donetsk city) that now lie in non-government controlled territory

An Assessment of the Donbas Region of Ukraine. Strategic & Operational Recommendations for USAID's Country Development Strategy: 2017-22 (P. 18)

formed agricultural groups, such as the agricultural cooperatives in Sartana and Pavlopil, are on the verge of collapse. They cannot access financing, since affordable loans or state support programs are not available. The correlation of these and various other political, social and economic factors demands a multi-sectoral inter-agency response that seeks to address key challenges in a comprehensive manner⁵.

Geographical delineation and micro-zoning

Since the start of the conflict, areas of western Donetsk *oblast* became the target of a number of international aid programmes, which in most-cases provided short-term relief and which sought to meet day-to day needs⁶. However, few interventions considered longer-term sustainability and impact. As the conflict becomes protracted, it is critical to ensure closer linkages and synergies between humanitarian support and recovery/development programmes.

Southern Donetsk *oblast* (the area from Marinka to Mariupol) is one of the areas still suffering from the impact of the conflict,

⁴ Situation Overview: Area Based Assessment in GCA within 5km of the Line of Contact, USAID, REACH p.14
http://www.reachresourcecentre.info/system/files/resource_documents/reach_ukr_situation_overview_aba_overview_july_2017_0.pdf.

⁵ As recommended in the *Ukraine Recovery and Peacebuilding Assessment* carried out by the World Bank, EU and UN p.23

<http://documents.worldbank.org/curated/en/879011468188335375/pdf/96487-REPLACEMENT-FILE-WP-v1-Box391453B-PUBLIC-RPA-A4-Vol1-Eng-Web.pdf>.

⁶ Assessment for developing subsistence farming and enhancing livelihood opportunities for populations in Eastern Ukraine, World Jewish Relief, Kyiv 2016.

The infrastructure of the region was traditionally serviced and managed by facilities and professionals in the urban centers of Donetsk and Luhansk. (...) this has made it difficult to overcome chronic deficits in infrastructure in GCAs and even more difficult to connect these systems with other parts of Ukraine. This is especially critical for Mariupol, a city often described as an “island” due to the poor condition of transport and other service infrastructure linking the city with the rest of government-controlled Ukraine

An Assessment of the Donbas Region of Ukraine. Strategic & Operational Recommendations for USAID’s Country Development Strategy: 2017-22 (P. 39)

compounded by pre-conflict systemic challenges and economic and logistical isolation. With major urban centres in Donetsk and Luhansk *oblasts* now outside of Government control, the port city of Mariupol has gained prominence as an employment hub and a haven for internally displaced persons (IDP), but the city’s infrastructure has degraded by lack of maintenance before the conflict and the forced closure of factories, not to mention the damage inflicted by the conflict. Recent incidents in the Azov Sea have put the economic potential of southern Donetsk under further strain.

Humanitarian and recovery needs assessments conducted by various actors in the last four years have clearly demonstrated the compounded negative impact of pre-2014 systemic problems and the conflict. When it comes to IDPs and other conflict-affected communities, different surveys have shown that housing, employment and health remain the overriding concerns. In the specific case of southern Donetsk *oblast*, assessments have

also shown that, with Donetsk city (the main market and source of employment and social services before the conflict) now cut off by a “contact line”, residents of this sub-region have had to look for alternatives. In doing so, conflict-affected populations in southern Donetsk *oblast* are incurring heavy costs, as the public service providers, markets and employment opportunities, are now located further away and the transportation networks are not necessarily conducive for such commuting.

Marinka (the *raion*’s administrative centre) and Krasnohorivka (its largest town) are among the areas most devastated by the ongoing conflict. The total population of this area is 84,000 people. Recently, the *raion* administration moved back from Kurakhove back to Marinka, signifying that the town has become more resilient and relatively safer. Marinka is located close to one of the five entry-exit checkpoints (EECP) between NGCA and GCA. In October 2018, there were 282,400 crossings through the Marinka EECP, with large numbers of people crossing to access social payments⁷, as well as to sell and purchase products. Unlike southern Donetsk, Marinka *raion* has no concentration of industrial capacities; it has no urban centres and therefore had a strong economic dependency on Donetsk city. The area is mainly rural with several small production enterprises currently not operational because of the damage caused by armed hostilities and in need of rehabilitation and investment.

The conflict cut off Mariupol and its surrounding areas from the large urban centre of Donetsk. As a result, Mariupol and adjacent areas suffered socio-economic disruptions that have resulted in high unemployment; oversaturation of sales markets in some areas; lack of systematic trade in other places; loss of access to health services; and overstretched

⁷ Crossing the line of contact monitoring report, Right to Protection, October 2018 http://vpl.com.ua/wp-content/uploads/2018/11/zvit_KPVV_october-2018_eng.pdf.

capacities of local health facilities in GCA. The IDP influx has put an additional strain on Mariupol’s infrastructure and capacity for service delivery.

The area-based programme will cover from Marinka (western Donetsk *oblast*) to Mariupol. In southern Donetsk, it will also focus on villages such as Chermalyk, Pavlopil, Lebedynske, Talakivka, Kominternove and Shyrokyne, all of which will become the first Ukrainian amalgamated *hromada* (community) that is situated completely on the “contact line”. The center of this amalgamated *hromada* will be in Sartana, which is currently subject to Mariupol city in terms of budget allocations. While legally include within the Sartana *hromada*, Shyrokyne is currently uninhabited due to complete devastation and proximity to the contact line, while Komynternove is situated in NGCA.⁸

Support to decentralization and reform

The area-based initiative will facilitate the socio-economic revitalization of this area, while also enabling the community to achieve budget autonomy in the framework of decentralization. Successful implementation of ABI activities will also demonstrate the benefits of decentralization not only at the local but also at the regional and national level.

There is a clear need to demonstrate reforms in a concrete way in the Donbas.

An Assessment of the Donbas Region of Ukraine. Strategic & Operational Recommendations for USAID’s Country Development Strategy: 2017-22 (P. 10)

As part of the Ukraine overall reform process, the decentralization of employment policy requires enabling State Employment Service (SES) to become catalysts for local-level action and employment, capable of identifying solutions based on regional/local potential. Within local partnerships, SES will be empowered to implement these solutions by better linking employment policy with other policies and interventions in order to improve the employment outcomes of individuals and groups at risk of labour market exclusion.

Donetsk *oblast* (GCA) is among the pilot regions for the healthcare reform. The planned healthcare interventions are aligned with the ongoing health care transformation and will support the efforts of the Ukrainian Ministry of Health to increase the effectiveness and efficiency of delivering health care services. The aim of supporting the (now displaced) Donetsk National Medical University in Mariupol is to mitigate the acute shortage of medical personnel in the area along the contact line within a period of four years.

Support to Peacebuilding

Community ties are a key aspect of decentralization and in building the social cohesion underpins revitalization of the fragile economy of southern and western Donetsk *oblast*. Mariupol is the informal capital of the socially coherent Greek minority in Ukraine. The Federation of Greek Communities actively conducts humanitarian activities on both sides of the contact line, thus making a significant contribution to peacebuilding. The Hippocrates Greek Medical Foundation provides medical support for the population of southern Donetsk by delivering humanitarian and social services. The ABI will work closely with and support these communities.

⁸ <https://decentralization.gov.ua/news/8531>.

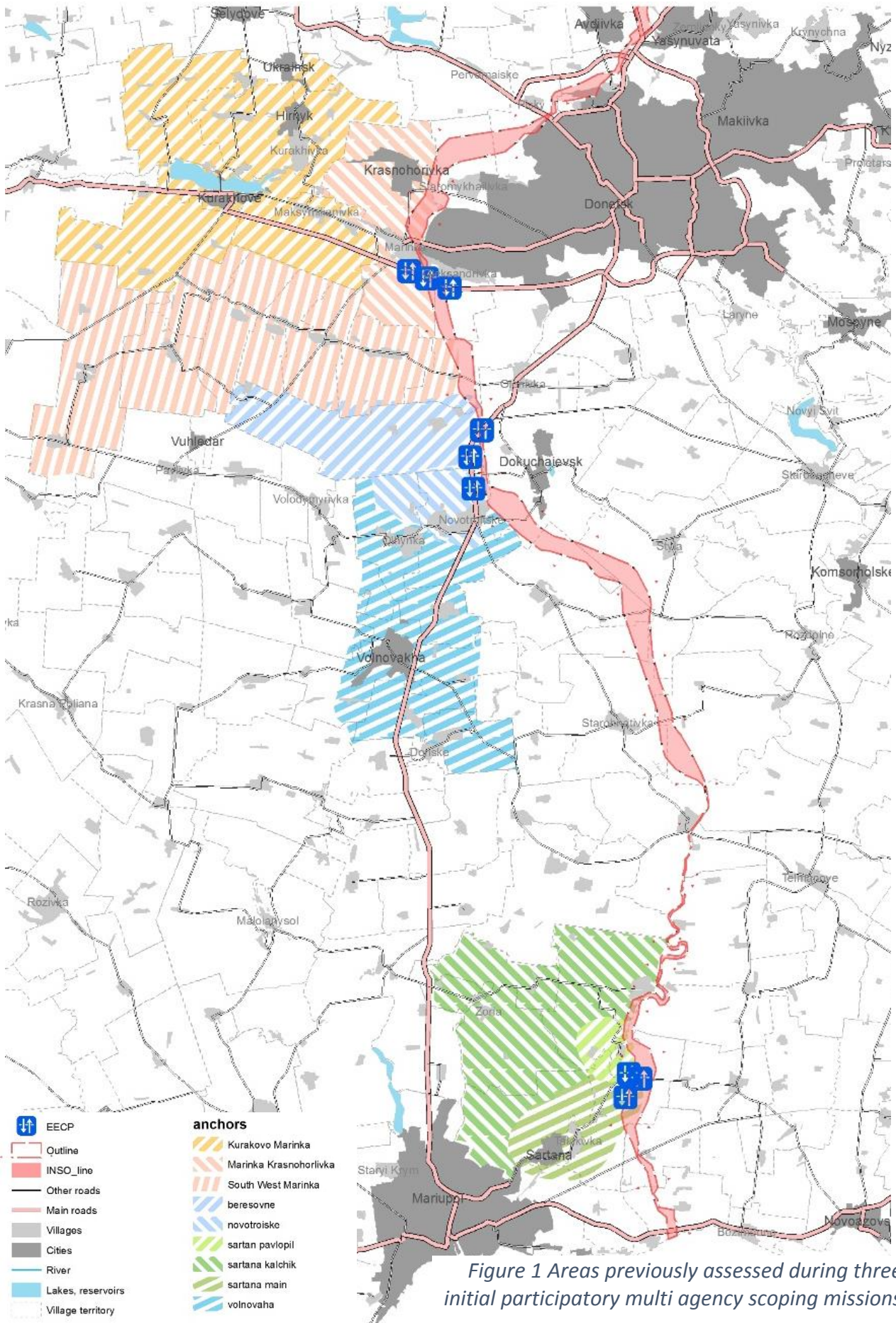


Figure 1 Areas previously assessed during three initial participatory multi agency scoping missions

Key stakeholders

	Government	Local Authority	Civil Society	Education Facility	Community Organization
Ministry of Temporarily Occupied Territories and IDPs	Main UNHCR Government counterpart				
Ministry of Health	Main WHO Government counterpart				
Ministry of Agrarian Policy and Food	Main FAO Government counterpart				
Ministry of Social Policy	Main ILO Government counterpart				
State Employment Service of Ukraine and its local offices	ILO counterpart in improving labour market governance able to provide capacity, human resources and infrastructure to all ABI partners				
Employers' and workers' organizations and unions			ILO national/sectoral constituents able to provide support for job creation in specific sectors		
State Labour Service and its local branches	ILO counterpart able to provide its capacity, human resources and available infrastructure to all ABI partners				
Mariupol Development Fund			ILO partner able to provide its capacities to ABI partners		
Federation of Greek Communities					Partner of UNHCR
Hippocrates Greek Medical Foundation					Partner of UNHCR and WHO
Sartana Agricultural College				Partner of UNHCR able to provide technical support to ABI partners	
Krasnohorivka Agricultural College				Ibid	
Department of Economics of Mariupol City Council		Providing information and administrative support to ABI			
Volnovakha Rayon Health Department		Providing information support to ABI			
Marinka Rayon Health Department		Providing information support to ABI			
Health Department of Mariupol City Council		Providing information support to ABI			
Donetsk Region Health Department		Providing information support to ABI			

	Government	Local Authority	Civil Society	Education Facility	Community Organization
Donetsk National Medical University (displaced in Mariupol)				An academic backbone of ABI	
Village councils of Sartana and Pavlopil Mariupol area		Providing support to ABI on the ground			
NGO Promin (Volnovakha)			Key civil society in Volnovakha (agriculture)		
Donetsk Displaced University				An academic backbone of ABI in charge of Monitoring and Evaluation	
Donetsk Chamber of Commerce and Industry			Providing support in business promotion		
Department of Agriculture & Rural Development of Donetsk Regional State Administration		FAO main local coordination partner			

Key guiding principles:

Reciprocity	Exchange of information and resources put at the center of cooperation with the aim of filling humanitarian gaps and maintain equality between partners.
Complementary approach	Jointly developed multifaceted response involving both humanitarian and development programmatic activities, thus ensuring sustainability of efforts. Focus on opportunities, strengths and comparative advantages of each agency in terms of programing, planning, operational capacities, presence on the ground and budget volume. Participation of other UN agencies can be considered during annual reviews.
People centred	Adopting a needs-based, people centred approach that includes community members in all phases of the ABI's design, implementation and evaluation; and ensures the inclusion of women, men, boys and girls of different backgrounds.
Promote sustainable change	Introduce a theory of change, based on Agenda 2030 and target sustainable and long-lasting improvements of livelihoods and access to social services.
Optimize resources	UNHCR facilitating and supporting activities of other UN agencies thanks to its extensive field presence, current operational capacity and local networks established over four years, since the beginning of the conflict.
Guarantee transparent decision-making process	Humanitarian action is embedded in substantive and procedural values of ethical relevance. Priority of human dignity in accordance with the UN pledge of " <i>leaving no one behind</i> " is the centerpiece of joint efforts. The innovative nature of such a multi-agency programme in Ukraine shall be recognized and measures (e.g. active discussions and expert involvement) should be taken to avoid misunderstandings and errors.
Coordination	Splitting activities according to each agency's relevant field of expertise, whereas the division of tasks shall include common coordination in order to avoid duplication of activities and ensure filling of the humanitarian gaps where needed.
Tools	Joint assessments and missions, regular meetings and briefings, streamlining of information from the persons of concern to the central level of ABI decision-making

Operational approach:

The ABI programme requires a new and multifaceted approach to address the complex challenges faced by the population being targeted. Some of the areas are heavily devitalized compared to other more developed areas. Some services and livelihood opportunities were already poorly developed prior to the conflict, and the military escalation only worsened service delivery and the employment situation.

Engage in additional analytical exercises within the Donbas to better understand key features and opportunities in the region.

An Assessment of the Donbas Region of Ukraine. Strategic & Operational Recommendations for USAID's Country Development Strategy: 2017-22 (P. 11)

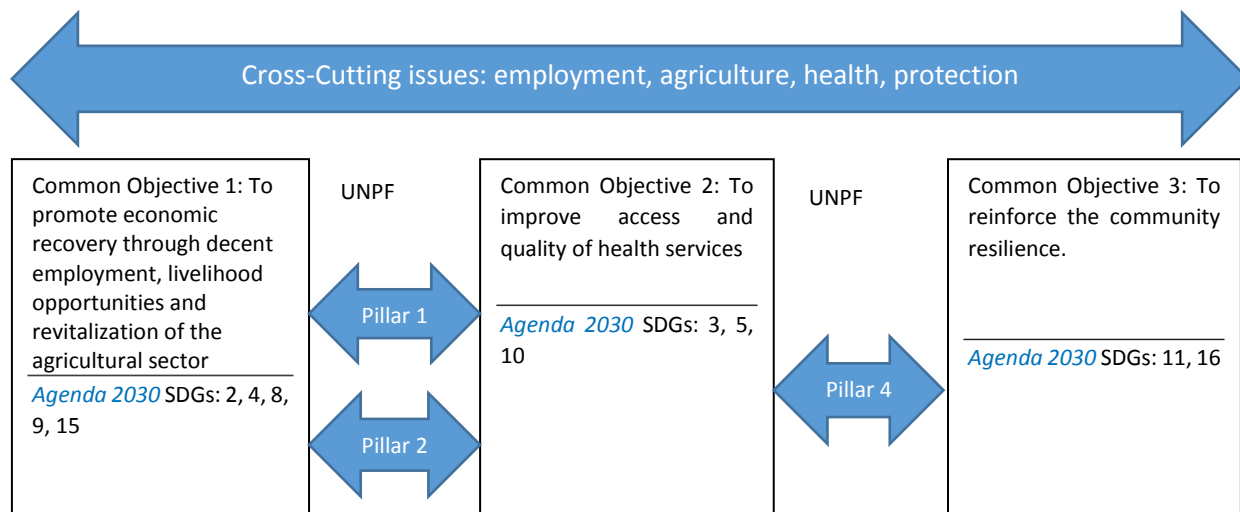
The approach must include the following guiding principles:

- **Multisectoral strategy**, to address needs of the population in a holistic manner;
- **Geographic definition** of interventions to ensure socio-economic coherence and avoid dispersion of efforts and resources;
- Addressing outstanding **humanitarian** needs and future emergencies linked to the ongoing conflict;
- **Recovery-orientation** to ensure the revitalization of the area through a comprehensive set of socio-economic activities over a period of two to four years;
- Mainstreaming a long-term sustainable **development perspective**;
- Incorporating **peace and confidence-building** measures based on improvement of living conditions, but also restoration of community resilience and social ties;
- Improving **governance** at the local level through support to reforms that enable communities' sustainable self-management and helps to develop their assets.

The project activities included will need to be in line with the humanitarian-development nexus, as all the target areas have outstanding humanitarian needs and still suffer from the ongoing conflict. In this connection, UNHCR's humanitarian work will complement the recovery and development activities implemented by FAO, ILO and WHO. Also, UNHCR was the first UN agency to open a field office in Mariupol, and since then has provided premises for other UN agencies in what is now the largest city of Donetsk oblast under Government control. UNHCR has also developed a strong network in the region, with local and municipal authorities as well as civil society actors. In this respect, UNHCR will play a critical support role to the other three UN agencies with its administrative resources, as well as its local knowledge and outreach networks.

Timeframe: The programme is based on a multiyear strategy but given the trend of overall diminishing funding opportunities, it will have annual programming and budgeting cycles. This phased approach will also allow for adjustments according to the evolving needs on the ground whilst also meeting short and mid-term objectives.

Implementation outline & main deliverables:



Year 1: Mobilization and piloting of interagency activities

FAO:

- Mapping of priority agricultural value chains.
- Identification of bottlenecks in selected agricultural value chains.
- Stocktaking exercise of existing actors of agricultural advisory services.
- Development and introduction of effective and widely acceptable model of agricultural advisory services.
- Identify agricultural skills gap in the target region.
- Development and introduction of curriculum for complex agricultural occupational training.
- Provide support to promising micro, small and medium enterprises (MSME) with training and grants to develop their business.
- Organize and facilitate participation of selected agricultural MSMEs in trade fairs and relevant business-to-business (B2B) events.

ILO:

- Conduct a diagnostic of selected territories (amalgamated communities) aiming to identify priorities of local economic recovery to be addressed within local employment partnerships (LEP).
- Provide assistance in establishment of LEPs and their institutional building (governance, type of organization, legal status, management, financing and sustainability).
- Carry out training in managing and facilitating effective partnerships (team work, information sharing, joint decision-making, conflict resolution, communication, facilitation).
- Provide assistance to local State Employment Service (SES) offices in developing/improving active labour market measures (ALMM) targeting skills mismatch of conflict-affected youth and women
- Role out the Start and Improve Your Own Business (SIYB) in consultation with regional and local partners based on market assessment on the supply and demand of business training and start-up services with a specific focus on conflict-affected women and youth.
- Trainings for self-employed and future entrepreneurs.

- Identify measures to tackle/prevent undeclared work and promote formalization of jobs in specific sectors in consultation with relevant regional/local partners as part of National Action Plan to fight Undeclared Work.

UNHCR:

- Work closely with the communities to strengthen their self-protection capacity and mobilization.
- Provision of individual assistance to the most vulnerable groups of contact line residents and IDP to enable their access to state services, settle the issues pertaining to personal documentation and social benefits.
- Shelter repairs to ensure access to adequate and dignified shelter conditions, and mitigate the risk of unsafe returns.
- Community Centers support and rehabilitation if needed.
- Monitoring the situation at the line of contact and in IDP hosting communities to measure the effects of legislative changes on the lives of conflict-affected population.
- Regional and national advocacy aimed at addressing the identified legislative and procedural gaps limiting the rights of IDP and contact line residents to their pensions, personal documentation, property rights; advocacy regarding durable solutions for IDPs and conflict-affected persons and protection of civilians from the effects of armed conflict, including mine/ERW contamination.
- Strengthening the capacity of state institutions at the line of contact to foster community's access to basic government services.

WHO:

- Building the capacity and capability of the healthcare system in the area of emergency healthcare services, infection prevention and control, mental health. Supporting the transformation of the healthcare system in the country.
- Equipping healthcare facilities with necessary medical equipment-diagnostic equipment;
- Strengthening the surveillance system.
- Supporting the displaced Medical University.

Year 2:

ILO:

- Provide assistance in development of local LEP strategies, action plans and monitoring and evaluation tools.
- Establish and finance adequate service lines within LEP implementation.
- Design and provide assistance to SES and other relevant institutions in implementation of policies tackling long-term structural unemployment Provide assistance to local SES offices in developing/improving ALMM targeting skills mismatch of conflict-affected youth and women.
- Develop a methodology for a tracer study/impact assessment of one of the selected labour market policy.
- Provide support to improvement/establishment of entrepreneurship infrastructure in selected territories as part of the larger labour market governance improvement.
- Provide support to new entrepreneurs in selected territories from among SIYB trainees.

- Programme management training for local partners to manage and implement future SIYB training.
- Implementation of jointly identified measures to prevent undeclared work and promote jobs formalization.

UNHCR:

- Work closely with the communities to strengthen their self-protection capacity and mobilization.
- Provision of individual assistance to the most vulnerable groups of contact line residents and IDP to enable their access to state services, settle the issues pertaining to personal documentation and social benefits.
- Shelter repairs to ensure access to adequate and dignified shelter conditions, and mitigate the risk of unsafe returns.
- Community Centers support and rehabilitation if needed.
- Monitoring the situation at the line of contact and in IDP hosting communities to measure the effects of legislative changes on the lives of conflict-affected population.
- Regional and national advocacy aimed at addressing the identified legislative and procedural gaps limiting the rights of IDP and contact line residents to their pensions, personal documentation, property rights; advocacy regarding durable solutions for IDPs and conflict-affected persons and protection of civilians from the effects of armed conflict, including mine/ERW contamination.
- Strengthening the capacity of state institutions at the line of contact to foster community’s access to basic government services.

Year 3 and 4 will be detailed through a detailed project document

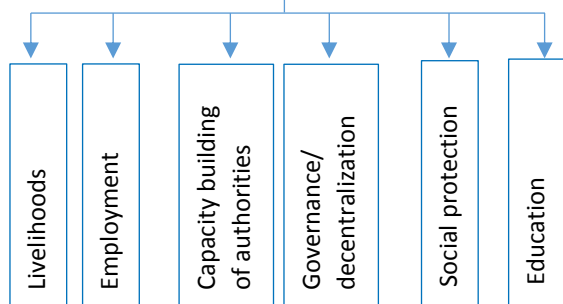
Funding requirements in USD⁹:

	FAO	ILO	UNHCR	WHO
Year 1	630,000	1, 047, 858	122,500	814,800
Year 2	1,470,000	1, 135, 179	612,500	1,222,200
Year 3	1,344,000	698, 572	400,000	1,222,200
Year 4	756,000	611, 251	400,000	814,800
Total (USD)	4,200,000	3,492, 860	1,535,000	5,581,380
Grand Total (USD):			14,809,240	

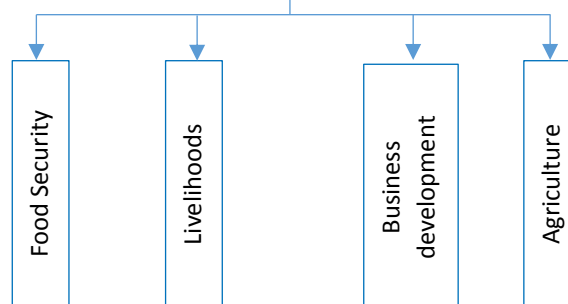
⁹ These funding requirements are preliminary estimates and based on findings of two scoping missions. Further detailed plan will be developed according funding opportunities and specificities of each agency’s annual budgets.

Common Objective 1: To promote economic recovery through decent employment /livelihood opportunities and revitalization of the agricultural sector by 2022

Specific outcome 1: Improve performance of the local economy by strengthening labour market governance



Specific outcome 2: Resilience of agricultural livelihoods increased



Development/Humanitarian linkages:

Humanitarian/recovery oriented

HRP outcomes 1, 2 and 3
UNPF pillar 4

Development oriented

HRP outcome 3
UNPF pillars 1, 2, 3 and 4

INTERVENTIONS

Development:

Governance/decentralization: Support to selected areas in establishment and institutional building of local employment partnerships as part of localized labour market governance policy.

Employment/Capacity building of authorities: Strengthen employment services and other labour market institutions to improve employment outcomes of conflict-affected youth and women.

Livelihoods/Education: Provide for livelihood support through entrepreneurship training and support services, particularly targeting youth and women.

Social protection: Develop and support local authorities in implementation of measures preventing undeclared work and promotion of jobs formalization.

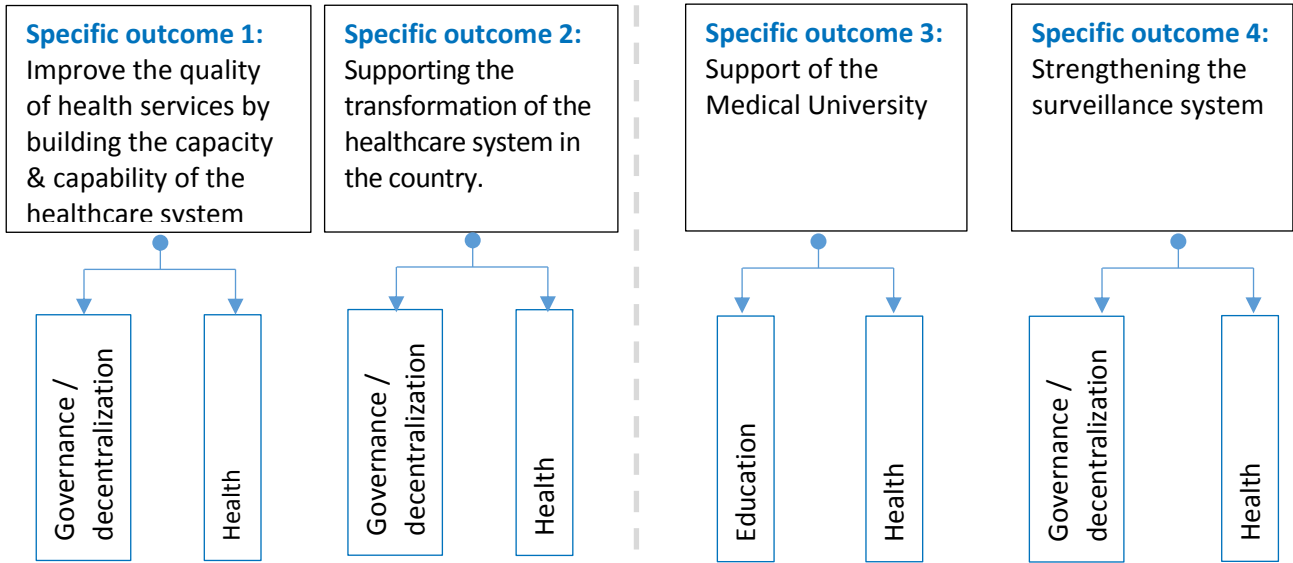
Early recovery:

- Distribution of agricultural grants to farming households for upscaling local agriculture production and creation of seasonal/permanent employment.
- Provision of equipment and tools to the agricultural cooperatives.
- Capacity building on quality requirements for agricultural production.
- Introduction of “School for farmer” as a complex solution to the skills gap issue in agriculture.
- Assistance in finding new sales markets.

Development:

- Promotion of group-based agricultural production and processing.
- Assistance in the process of cooperative creation.
- Promotion of niche agricultural production, including organic farming.
- Capacity building activities for farmers on business literacy.
- Promotion of contract farming.

Common Objective 2: To improve access and quality of health services by 2022



Development/Humanitarian linkages:

Humanitarian/recovery oriented
 HRP collective outcomes 1, 2 and 3
 UNPF pillar 4

Development oriented
 HRP collective outcome 3
 UNPF pillars 1, 2, 3 and 4

INTERVENTIONS

Humanitarian:

- Standard-setting and training for the conflict-affected areas, delivery of missing equipment to the healthcare facilities.
- Support to selected areas in conflict zone in surveillance management.

Humanitarian:

- Capacity building to Government services delivery.
- Outbreak responses management in the conflict zone.

Development:

- Capacity building activities aimed at supporting the national healthcare transformation process.
- Reducing the acute shortage of medical personnel.
- Systems improvements in timely and regular reporting and monitoring.

Development:

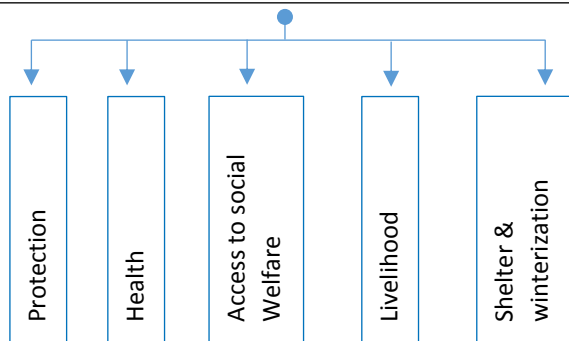
- Support to health systems reforms.
- Support the Government in establishing national standards of care.
- Support decentralization efforts in health sector.

Peace building/ Social Cohesion:

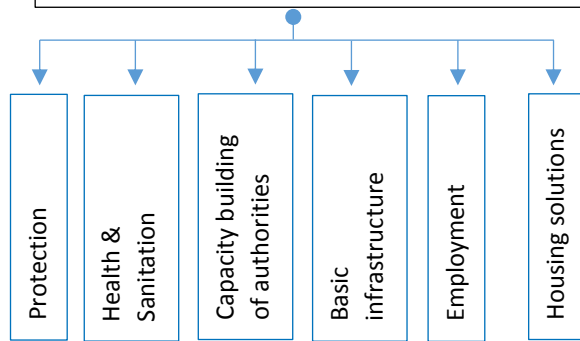
- Awareness raising campaigns about existing affordable state programmes.

Common Objective 3: To reinforce community resilience by 2022

Specific outcome 1: Reduce the acute vulnerability within communities including identification and referral to relevant institution(s).



Specific outcome 2: Increase community self-resilience through social cohesion, community services, and access to state assistance.



Development/Humanitarian linkages:

Humanitarian/recovery oriented
HRP collective outcomes 1, 2 and 3
UNPF pillar 4

Development oriented
HRP collective outcome 3
UNDAF Pillars 1, 2, 3 and 4

INTERVENTIONS

Humanitarian:

- Housing/shelter repairs and winterization.
- Protection by presence particularly focusing on the most vulnerable, cash and individual protection assistance (IPA).
- Referral from protection to health & social welfare.
- Legal support to pension reinstatement.

Humanitarian:

- Operational support to the ABI on the ground.
- Psychosocial support to the population affected by the conflict.

Development:

- Social instructions capable to cope with the increasing demand in social service.
- Emergency repairs on critical basic infrastructure. (water, heating, etc.)
- Agro-cooperative support through Community Centres.

Development:

- Basic infrastructure repairs and sustain for supporting economic revitalization.
- Support of agricultural college's re-profiling of young farmers.
- Contribute to positives changes in pension and social welfare reforms.
- Identification of affordable housing solutions for IDPs.
- Capacity building of State Employment Services.

Peace building/ Social Cohesion:

- Awareness raising campaigns about existing affordable state programmes.

Peace building/ Social Cohesion:

- Peaceful coexistence project (PCP).
- Community Participative approach in developing socio economical activities in their localities.