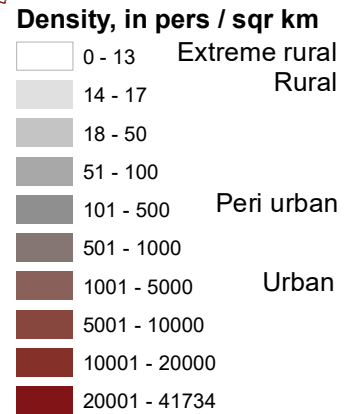
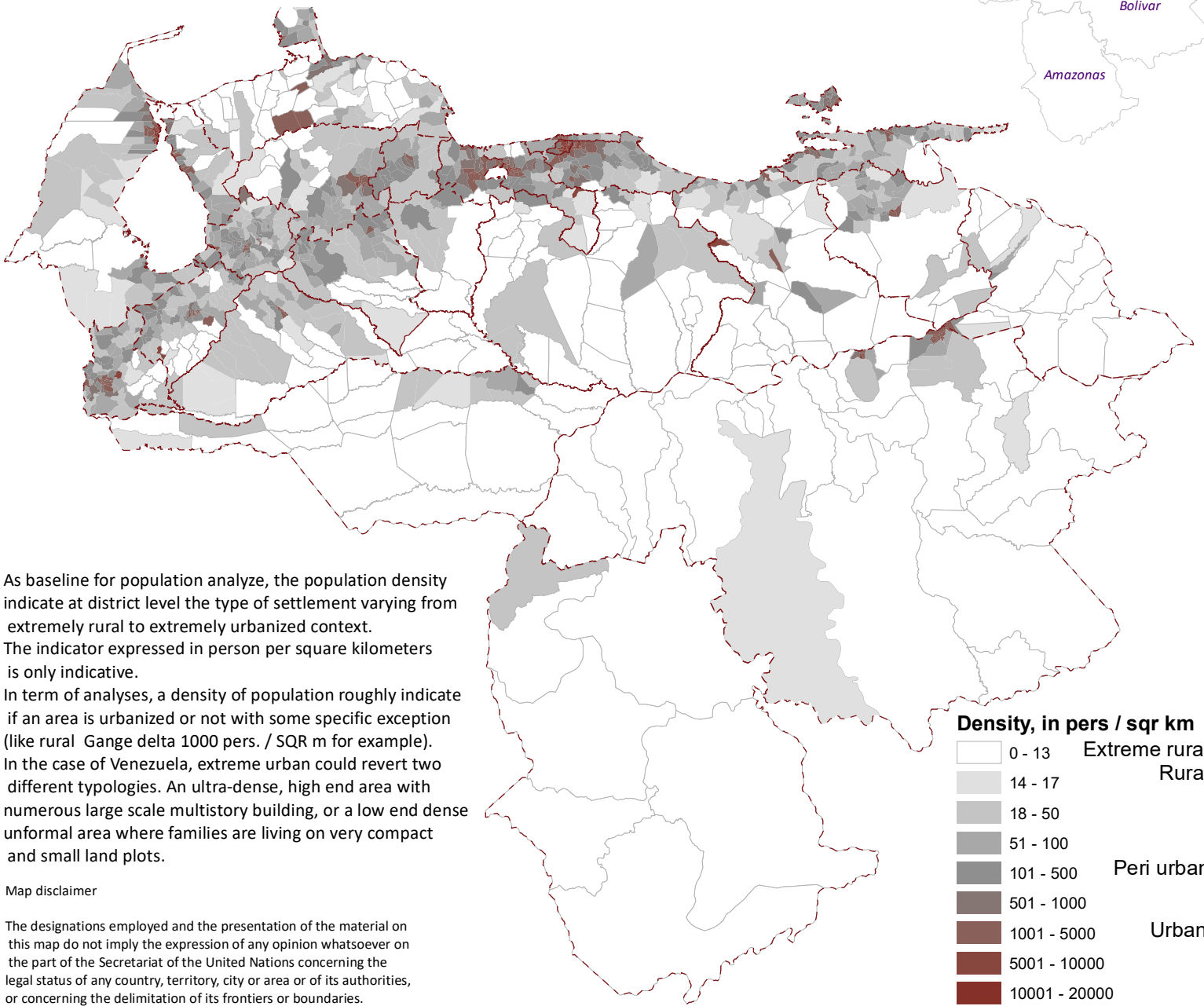


# Population Density per Paroquia



As baseline for population analyze, the population density indicate at district level the type of settlement varying from extremely rural to extremely urbanized context. The indicator expressed in person per square kilometers is only indicative.

In term of analyses, a density of population roughly indicate if an area is urbanized or not with some specific exception (like rural Gange delta 1000 pers. / SQR m for example). In the case of Venezuela, extreme urban could revert two different typologies. An ultra-dense, high end area with numerous large scale multistory building, or a low end dense informal area where families are living on very compact and small land plots.

#### Map disclaimer

The designations employed and the presentation of the material on this map do not imply the expression of any opinion whatsoever on the part of the Secretariat of the United Nations concerning the legal status of any country, territory, city or area or of its authorities, or concerning the delimitation of its frontiers or boundaries. Every effort is made to ensure this map is free of errors but there is no warrant the map or its features are either spatially or temporally accurate or fit for a particular use. This map is provided without any warranty of any kind whatsoever, either express or implied.

Sources: Administrative level 3 -district OCHA, HDX  
Population data, OCHA, HDX

