

2017

Shelter support increases as return movements take place

ALEPPO: Elderly returnee couple repairs their home by themselves in rural east Aleppo. They are among the 90 families (around 540 persons) who recently returned to Al Dreisiyeh. Return movement has continued to be reported in various governorates especially in Aleppo and the challenge to ensure that displaced families attain durable solutions still remains a huge undertaking.



© UNHCR / Hameed Maarouf

Emergency Shelter Support

As Syrian population continue to be uprooted from their homes, the need to provide them with safe and decent accommodation in a dignified manner remains a major undertaking. In 2017, more than 4.0 million people were estimated to be in need of shelter support of which 1.9 million people had acute shelter needs.

Shelter Sector partners have continued to collectively provide need-based shelter responses ranging from provision of emergency shelter to durable shelter supports. Emergency shelter support as part of the sector's life-saving shelter assistance, consists of shelter kit distribution, rehabilitation/upgrading of emergency shelter spaces in collective shelters and unfinished buildings, provision of transitional outdoor spaces, and shelter and infrastructure supports in transit camps and spontaneous settlements.

Shelter Kits Distribution: In 2017, more than 45,000 individuals have benefitted from shelter kits distribution and installation that includes winter shelter support (i.e. provision of stoves, expansion foam and extra heavy-duty plastic sheets).

Emergency shelter kits commonly consist of light closure materials that are designed to provide temporary and immediate shelter solutions.

Emergency Settlement Support: The largest number of beneficiaries in 2017 were reached through emergency settlement support. More than 309,000 displaced individuals were provided with shelter and infrastructure supports in transit camps and spontaneous settlements. Other settlement support includes construction of the communal kitchen, fencing, and installation of camp lighting.

Public Shelter Repair / Rehabilitation: The sector continues to support the rehabilitation of public buildings that are used as short to mid-term shelters to ensure a protective environment for the displaced population. In 2017, more than 15,000 displaced persons benefitted from this shelter solution.

Private Shelter Upgrade: In 2017, more than 23,000 individuals benefitted from private shelter upgrade mostly in Aleppo and Rural Damascus governorates.

Sustainable Shelter Support

The sector in close coordination with state institutions and other sectors continues to provide shelter solutions that contribute towards the resilience and cohesion of communities. Among its resilience-based shelter efforts include sustainable repair/rehabilitation of housing and related community/public infrastructure and facilities, capacity building of local stakeholders, and advocacy to address housing, land and property issues.

Rehabilitation of Partially Damaged Houses: Sector partners continue to support owners and tenants to rehabilitate their partially damaged houses in their places of origin to ensure adequate living conditions. There was an increased focus on this activity in 2017 by the shelter sector partners. More than 24,000 individuals have benefitted in 2017 compared to 12,000 in 2016. Most of the beneficiaries are located in Homs governorate where return movement has taken place significantly.

Rehabilitation of Community/ Public Infrastructures: To complement the durable shelter supports, partners continued to provide assistance to rehabilitate basic community/public infrastructure to ensure access to essential infrastructure services. In close coordination with other sectors, partners were able to reach more than 92,000 individuals in 2017 in Aleppo and Rural Damascus governorates.

Capacity Building Support: To empower local stakeholders and ensure sustainability of shelter interventions, capacity building efforts continued. In 2017, a total of 171 technical / engineering staff from 8 governorates received training on damage building assessment. The training was a joint effort of the Ministry of Local Administration and Environment and the United Nations High Commissioner for Refugees. Another 56 participants who are mostly reporting or IM focal points were trained on Humanitarian Information Management training in Damascus City.

OVERALL FIGURES

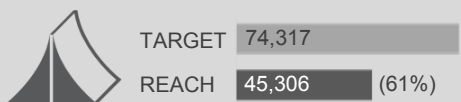


Total no. of people covered with emergency and durable shelter support in Syria in 2017



NUMBER OF PEOPLE COVERED WITH VARIOUS SHELTER SUPPORTS

SHELTER KIT PROVISION



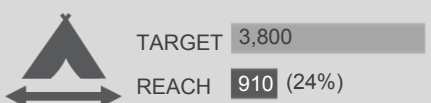
IDP SETTLEMENT SUPPORT



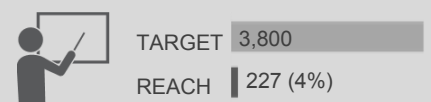
DURABLE SHELTER & INFRASTRUCTURE



TRANSITIONAL SHELTER SOLUTION



CAPACITY BUILDING





Challenges and Gaps

While efforts were made to address the pressing shelter needs of the most vulnerable population, there are still challenges and gaps that remain to be addressed.

- Access and safety are the key challenges in many parts of the country as well as partner capacity and heavy processes along with funding constraints;
- Increasing needs, diminishing coping capacities

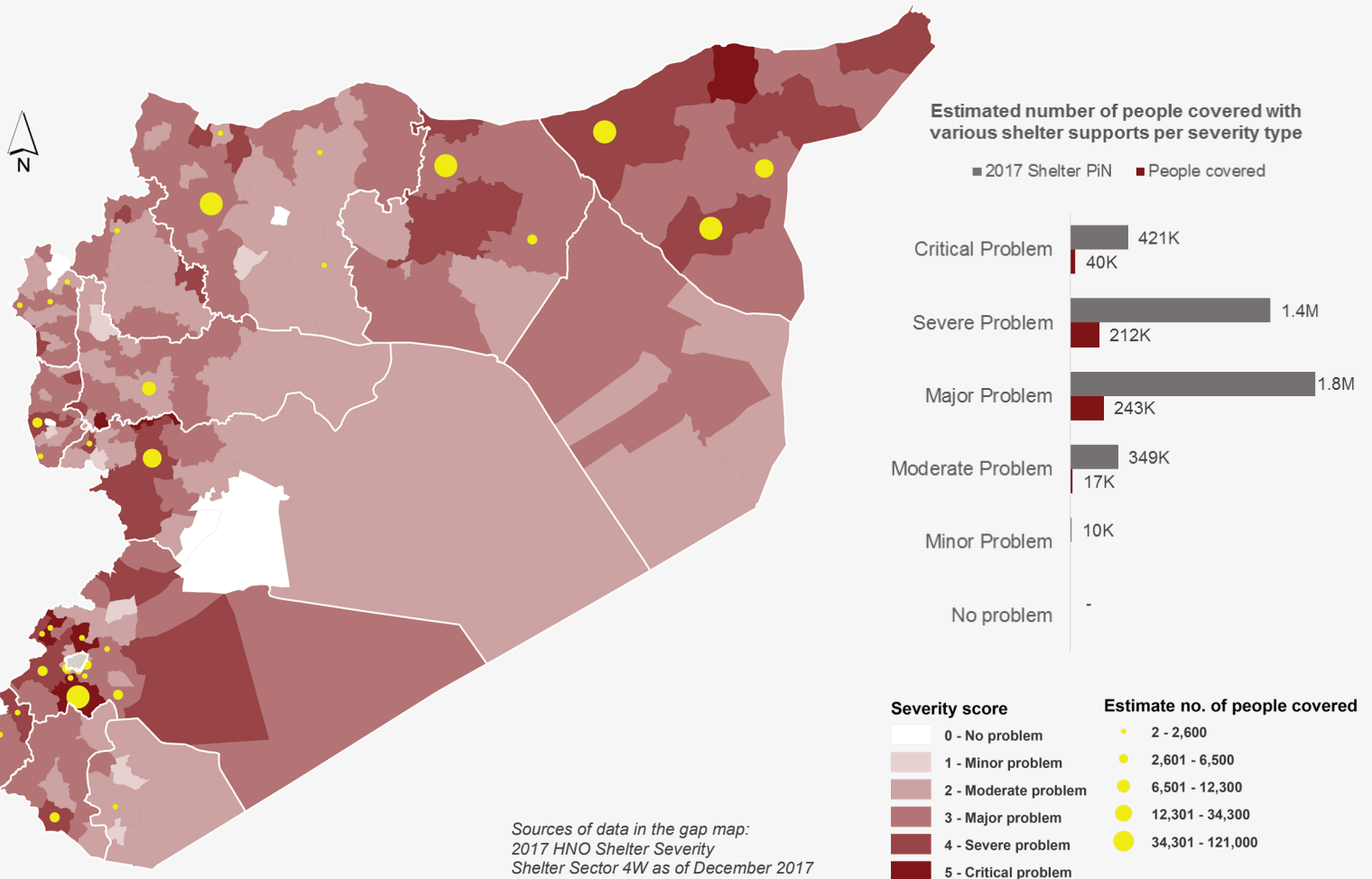
ties of both the IDPs and host communities, and limited financial resources of the government to provide shelter compensation require sector partners to scale up operational presence;

- Shelter and infrastructure needs are huge and the Shelter Sector partners collectively do not have the capacity to meet all the needs;
- Issue related to the loss of occupancy documents deprived some population of accessing

shelter supports;

- Shelter rehabilitation supports in the informal settlements is limited due to related HLP issues.
- Opportunities for systematic field-based data collection remain very limited due to access or authorization restrictions, resulting in incomplete needs analysis in some areas.

SYRIA: Shelter Sector Response Gap Map, January - December 2017



CRISIS BACKGROUND: The crisis in Syrian Arab Republic that started in March 2011 has transformed into a complex emergency that has displaced around 6.3 million people and forced around 4.8 million people out of the country to seek asylum (2017 Humanitarian Response Plan). As per the 2017 Humanitarian Needs Overview, around 13.5 million people are in need of humanitarian assistance of which around 4.3 million people are desperate to receive adequate shelter support and other multi-sectorial assistance as they continue to struggle in an unsafe and uncertain environment. Due to the protracted nature of the crisis, many of both displaced and host communities become more vulnerable and their ability to cope and find safe and durable shelter solutions have been greatly affected. The humanitarian community has been challenged to both provide emergency and life-saving shelter solutions while building back community cohesion and resilience through provision of sustainable shelter assistance.

Shelter Sector Coordination Team

Pankaj Kumar Singh, Shelter Sector Coordinator (singhpa@unhcr.org)
 Bareaa Alkafre, Asst. Sector Officer (alkafre@unhcr.org)

Shelter Sector Information Management Team

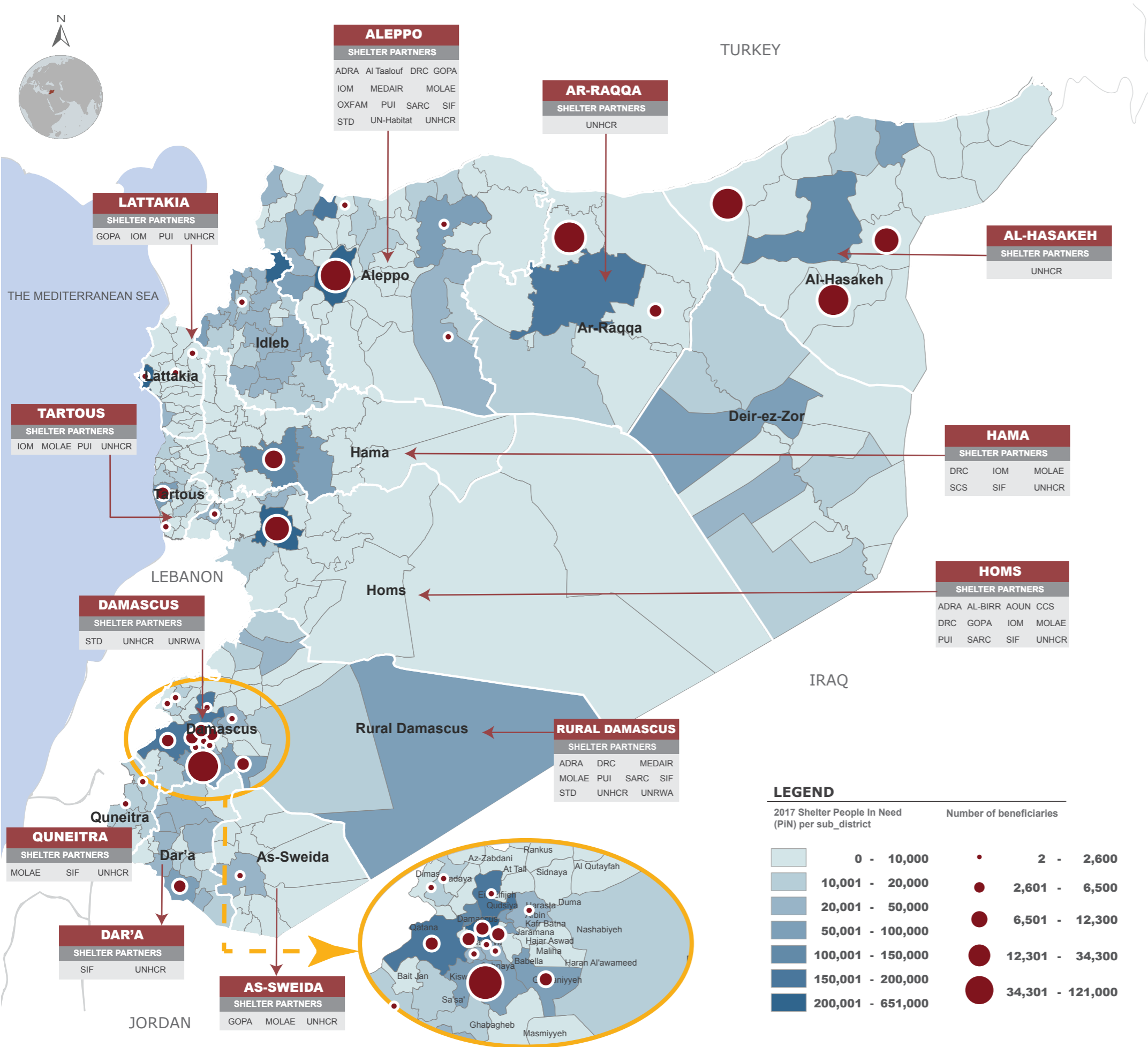
Muhammad Shahzad, IM Officer (shahzadm@unhcr.org)
 Corazon C. Lagamayo, IM Officer (lagamayo@unhcr.org)
 Maha Shaban, IM Associate (shabanm@unhcr.org)
 Ashraf Zedane, IM Associate (zedane@unhcr.org)



SYRIA: SHELTER SECTOR RESPONSE SNAPSHOT

Reporting Period: January - December 2017

Shelter Sector
Syria Hub
 Sheltercluster.org
 Coordinating Humanitarian Shelter



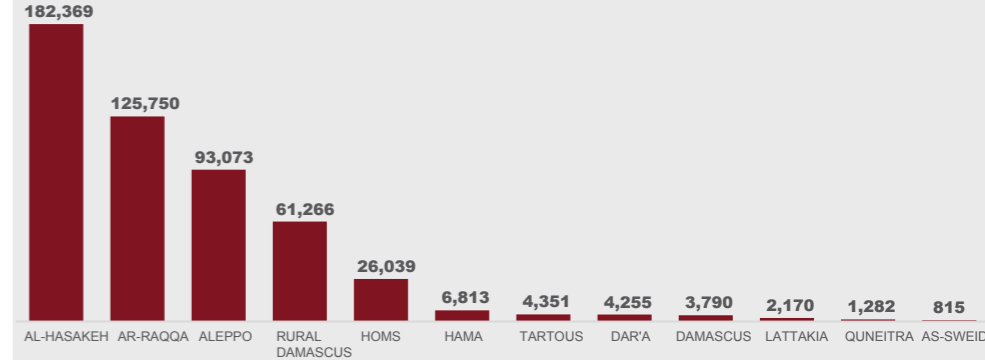
TOTAL BENEFICIARIES COVERED

4.3 M OVERALL PEOPLE IN NEED (PIN)
 742 K TARGETED PIN / HRP 2017

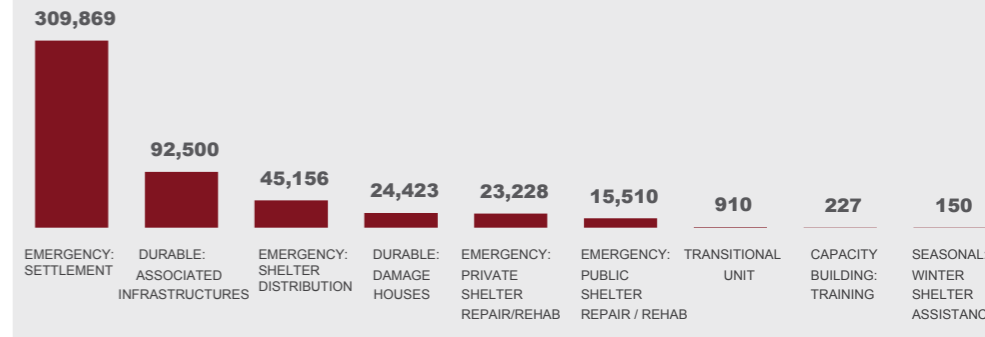
511,973

169% OF 303,385 TARGETED PIN (IN SHELTER) BY SYRIA HUB

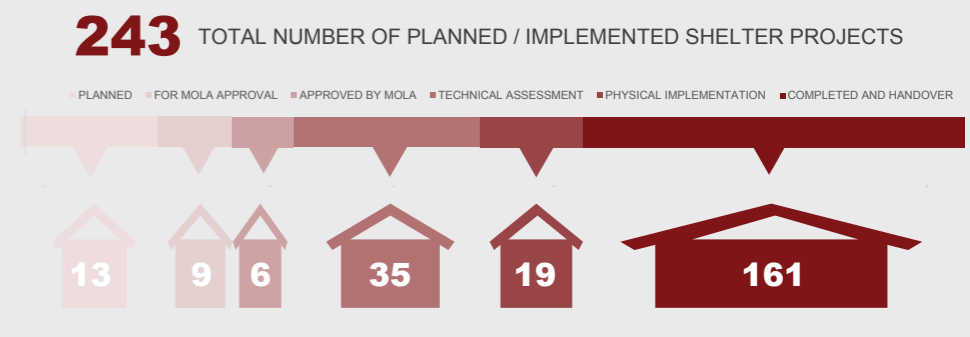
BENEFICIARIES COVERED PER GOVERNORATE



BENEFICIARIES COVERED BY TYPE OF SUPPORT



NO. OF SHELTER PROJECTS PER STAGE



SHELTER SECTOR PARTNERS

CO-LEAD AGENCIES			
ACF	ADRA	AL BIRR	AL Ihsan
AI Taalouf	AOUN	CCS	DRC
GOPA	IOM	MEDAIR	NRC
OXFAM	PUI	RESCATE	RSRP
SARC	SCS	SIF	SSSD
STD	UN-Habitat	UNRWA	