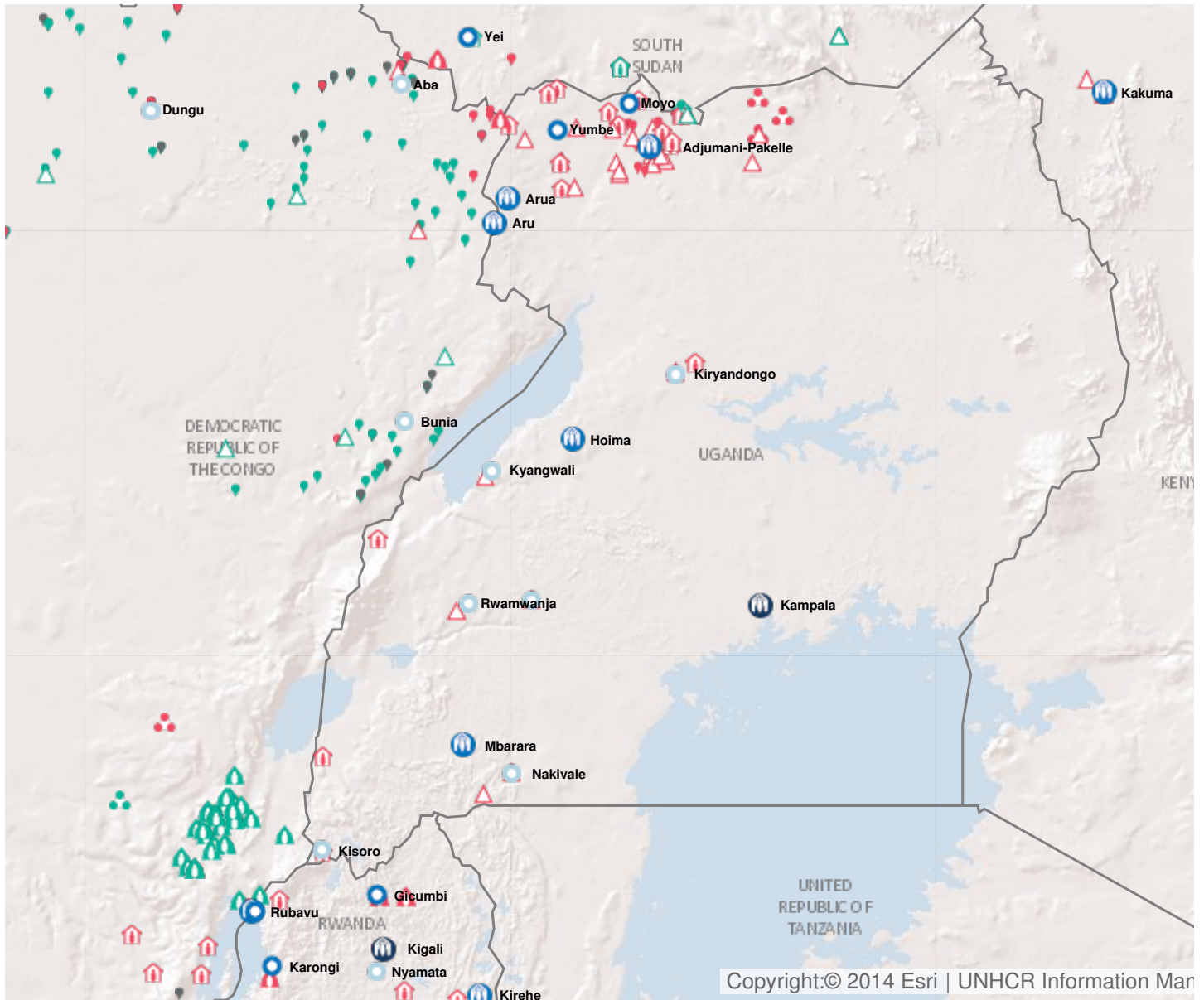


Operation: Uganda

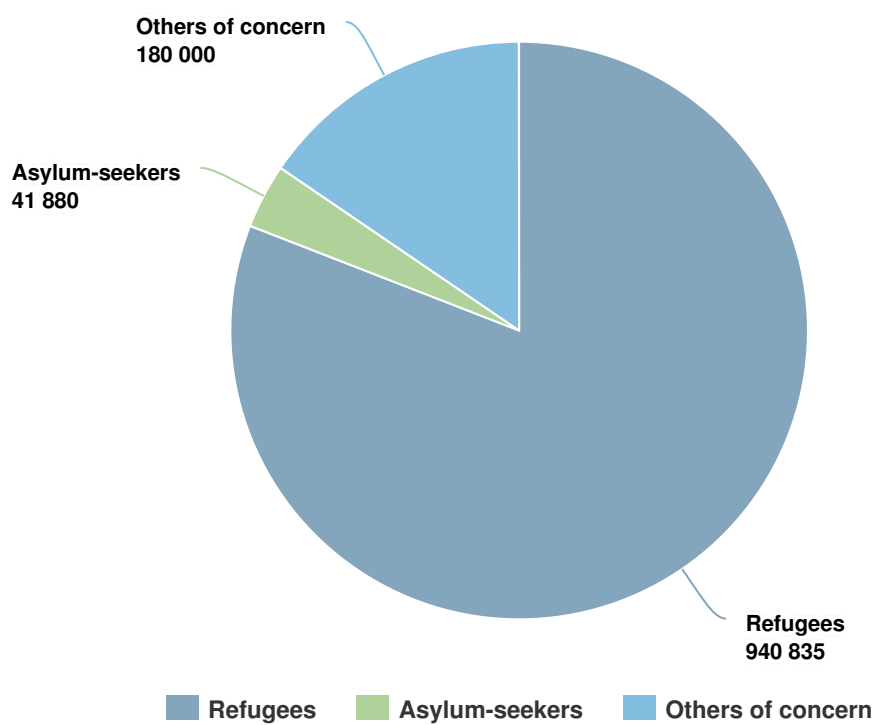


Latest update of camps and office locations **21 Nov 2016.**

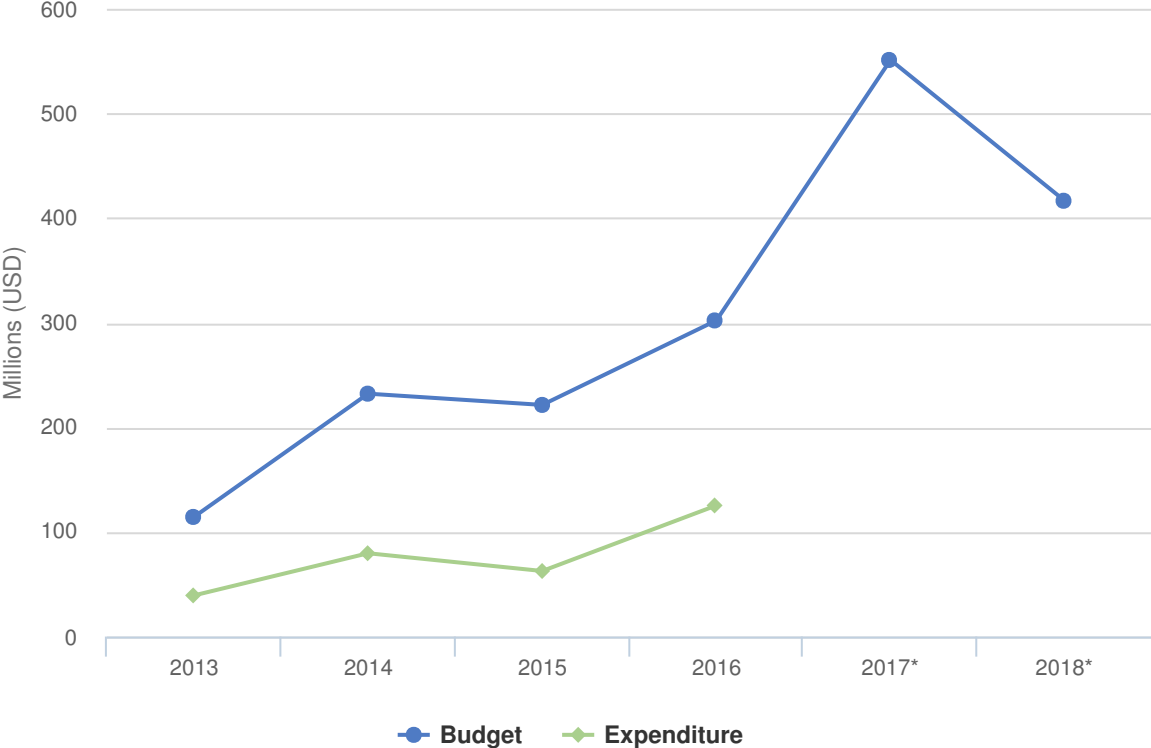
People of Concern

68% INCREASE IN
2016

| | |
|-------------|-----------|
| 2016 | 1,162,715 |
| 2015 | 694,158 |
| 2014 | 600,989 |



Budgets and Expenditure for Uganda



Working environment

Uganda hosts an estimated 1.3 million refugees. It is Africa's largest refugee hosting country and one of the top five worldwide. Throughout 2017, Uganda responded to three concurrent emergency influxes: South Sudan, the Democratic Republic of Congo (DRC) and Burundi. The profile of new arrivals is characterized by a high proportion of women and children, currently representing approximately 84 percent of the new arrivals.

The Government of Uganda continues to strengthen the refugee-hosting environment through the Settlement Transformative Agenda included in its five-year National Development Plan II (NDP II 2016-2020). The UN Country Team and the World Bank are supporting the Government of Uganda through the Refugee and Host Population Empowerment (ReHoPE) strategy, which is integrated into the UN Development Assistance Framework for Uganda (UNDAF 2016-2020). These strategic initiatives are aligned with the Comprehensive Refugee Response Framework (CRRF) of the New York Declaration on Refugees and Migrants. Uganda was the first country to officially roll-out the CRRF.

Key priorities

In 2018, Uganda, in collaboration with the international community, with an objective of streamlining risk management within the operation intends to pursue its application of a CRRF approach in the following five areas:

- emergency response and protection;
- peaceful co-existence with local communities;
- self-reliance and resilient livelihoods;
- integration of social services delivery in local government systems; and

durable solutions for refugees and stateless persons.

2018 Original Budget for Uganda | USD

The following table presents the original budget for this operation broken down at the objective level. Resource allocation at the objective level is subject to change during the course of the year as the operational situation evolves and priorities shift.

| | Pillar 1 Refugee programme | Pillar 2 Stateless programme | Total |
|--|-------------------------------|---------------------------------|--------------------|
| Favourable Protection Environment | | | |
| Law and policy | 444,420 | 0 | 444,420 |
| Administrative Institutions and Practice | 0 | 200,000 | 200,000 |
| Legal remedies and legal assistance | 4,551,837 | 0 | 4,551,837 |
| Access to territory | 1,684,844 | 0 | 1,684,844 |
| Subtotal | 6,681,102 | 200,000 | 6,881,102 |
| Fair Protection Processes and Documentation | | | |
| Reception conditions | 12,620,945 | 0 | 12,620,945 |
| Registration and profiling | 18,341,468 | 0 | 18,341,468 |
| Status determination | 2,463,884 | 0 | 2,463,884 |
| Individual documentation | 1,653,349 | 0 | 1,653,349 |
| Civil status documentation | 2,773,573 | 0 | 2,773,573 |
| Subtotal | 37,853,220 | 0 | 37,853,220 |
| Security from Violence and Exploitation | | | |
| Protection from crime | 3,369,067 | 0 | 3,369,067 |
| SGBV prevention and response | 10,131,861 | 0 | 10,131,861 |
| Child protection | 8,432,025 | 0 | 8,432,025 |
| Subtotal | 21,932,952 | 0 | 21,932,952 |
| Basic Needs and Essential Services | | | |
| Health | 45,142,727 | 0 | 45,142,727 |
| Reproductive health and HIV/ Aids response | 4,800,879 | 0 | 4,800,879 |
| Nutrition | 7,557,545 | 0 | 7,557,545 |
| Water | 41,408,256 | 0 | 41,408,256 |
| Sanitation and hygiene | 13,544,994 | 0 | 13,544,994 |
| Shelter and infrastructure | 34,649,326 | 0 | 34,649,326 |
| Energy | 2,888,753 | 0 | 2,888,753 |
| Basic and domestic and hygiene Items | 33,164,250 | 0 | 33,164,250 |
| Services for persons with specific needs | 12,867,755 | 0 | 12,867,755 |
| Education | 54,997,674 | 0 | 54,997,674 |
| Subtotal | 251,022,159 | 0 | 251,022,159 |

| | Pillar 1 Refugee programme | Pillar 2 Stateless programme | Total |
|--|-------------------------------|---------------------------------|--------------------|
| Community Empowerment and Self Reliance | | | |
| Community mobilization | 5,578,461 | 0 | 5,578,461 |
| Co-existence with local communities | 7,978,518 | 0 | 7,978,518 |
| Natural resources and shared environment | 8,979,552 | 0 | 8,979,552 |
| Self-reliance and livelihoods | 29,284,833 | 0 | 29,284,833 |
| Subtotal | 51,821,365 | 0 | 51,821,365 |
| Durable Solutions | | | |
| Resettlement | 2,840,162 | 0 | 2,840,162 |
| Subtotal | 2,840,162 | 0 | 2,840,162 |
| Leadership, Coordination and Partnerships | | | |
| Coordination and partnerships | 1,708,639 | 0 | 1,708,639 |
| Subtotal | 1,708,639 | 0 | 1,708,639 |
| Logistics and Operations Support | | | |
| Supply chain and logistics | 22,306,389 | 0 | 22,306,389 |
| Operations management, coordination and support | 20,166,163 | 0 | 20,166,163 |
| Subtotal | 42,472,552 | 0 | 42,472,552 |
| 2018 Original Budget | 416,332,152 | 200,000 | 416,532,152 |