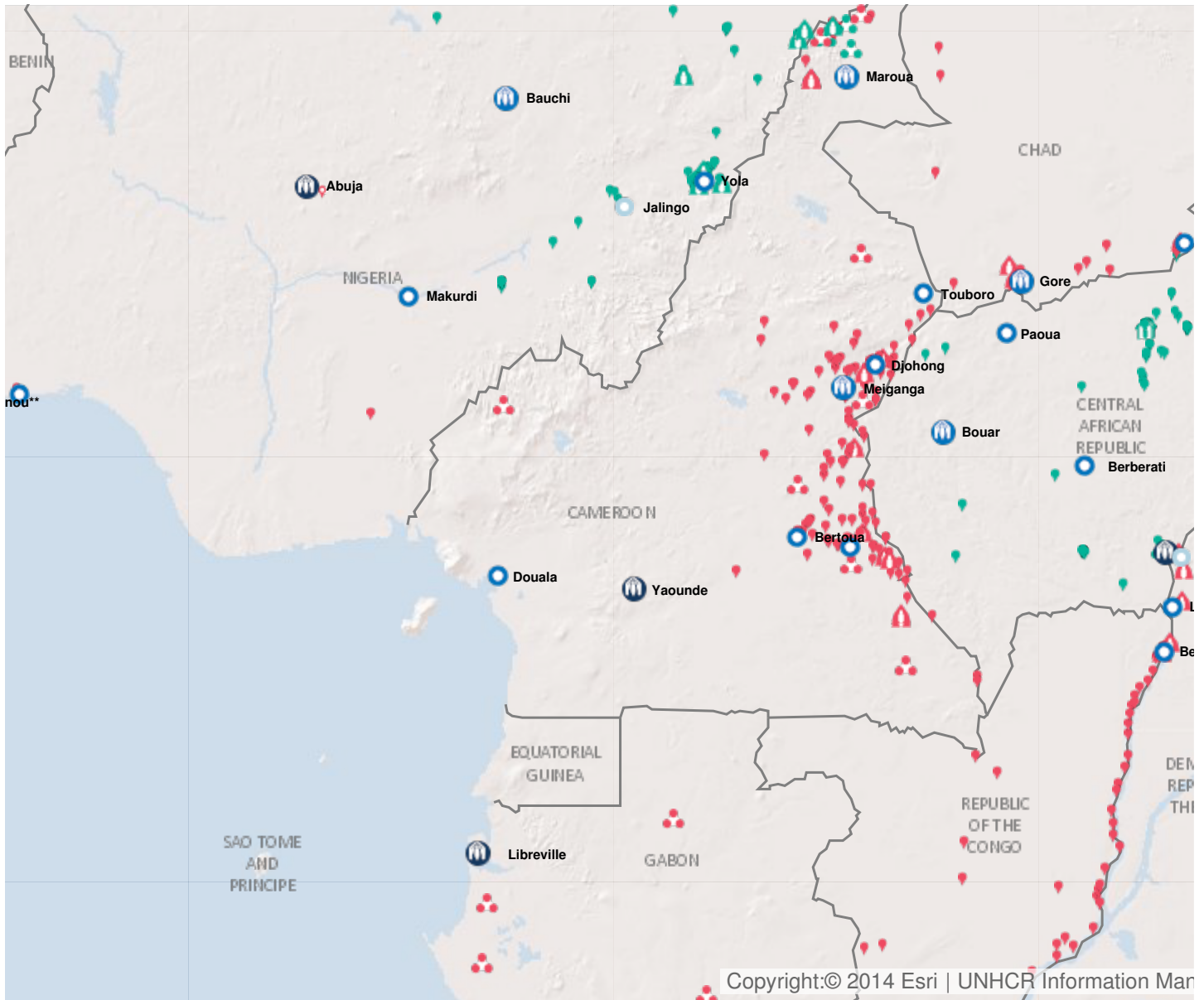


## Operation: Cameroon

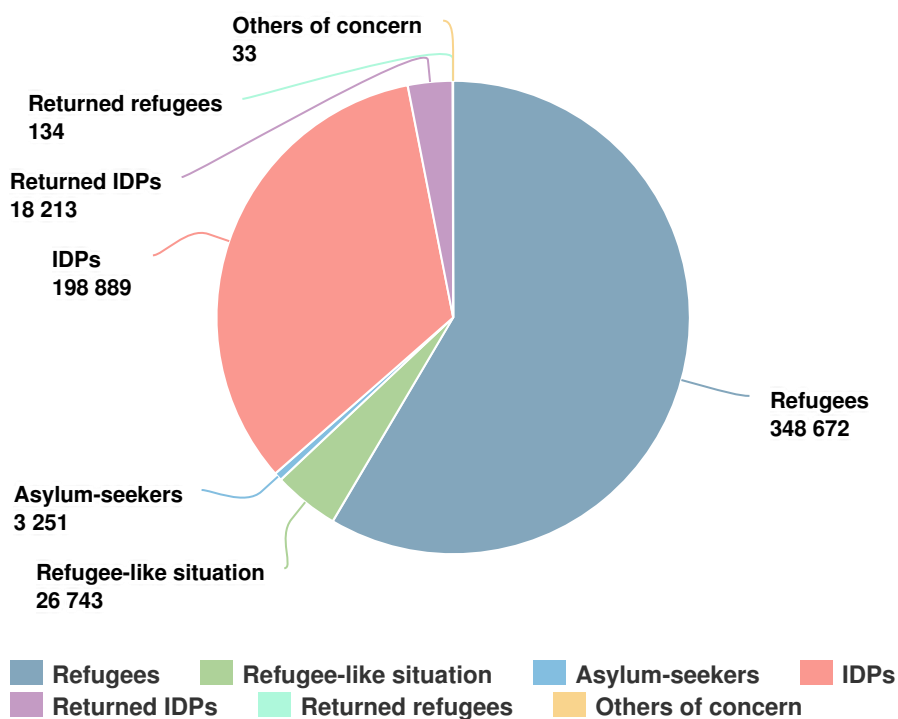


Latest update of camps and office locations **21 Nov 2016.**

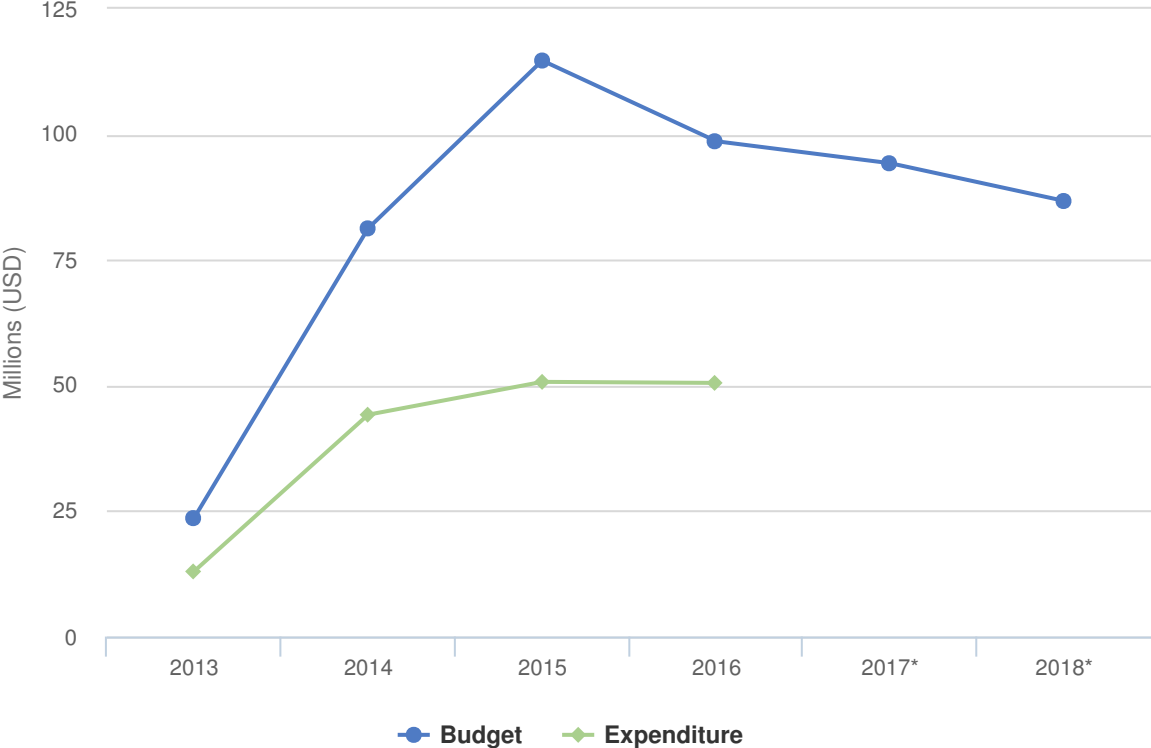
# People of Concern

INCREASE IN  
**30%** 2016

<b>2016</b>	595,935
<b>2015</b>	459,650
<b>2014</b>	276,265



# Budgets and Expenditure for Cameroon



## Working environment

UNHCR anticipates the protection environment for refugees in Cameroon to become more challenging in 2018. The spill-over effect and increased insecurity in border areas resulting from conflicts in Central Africa Republic (CAR) and Nigeria, coupled with the possibility of political tensions surrounding upcoming elections, can shrink the humanitarian space further. In addition, continuous demographic pressure on natural resources and social services continue to cast a level of uncertainty on peaceful coexistence, thus having a negative impact on the protection space for refugees. The prospects for return and other durable solutions are limited and the presence of Central African refugees in the eastern regions of Cameroon is becoming a protracted crisis. The results of the five major elections planned in Cameroon for 2018, presidential, senatorial, legislative, regional and municipal elections, could have an impact on asylum and refugee matters.

Cameroon has a long history of providing asylum to hundreds of thousands of refugees. Cameroon hosts over 320,000 refugees, including Nigerians in the Far North, Central Africans the Eastern border regions, and refugees of different nationalities in urban centres. The land for Minawao refugee camp has been provided by the authorities. While the majority of Central African refugees are living amongst host communities, some 30 per cent live in the camps (Djohone, Gado and Lolo) on land also provided by the authorities. The presence of large numbers of refugees is exacerbating pre-existing structural challenges, resulting in increased fragility and potential risk to social cohesion in the affected areas, a risk amplified by increasing pressure on the natural environment and scarce natural resources. Access to basic services is limited, rates of identity documentation and birth certificates are lower than national averages and these regions (East, Adamaoua, North and the Far North) are largely isolated from the rest of the country.

## Key priorities

In 2018, UNHCR remains committed to assume its humanitarian coordination responsibilities at various levels, to reinforce and diversify partnerships with development actors, international financial institutions—including the World Bank and the African Development Bank—and private sector actors, and most importantly, to further deepen its engagement with government counterparts regarding the management of all refugee-related matters.

UNHCR will continue to empower and include refugees and other people of concern in the programme management process and provide protection and multi-sector assistance taking into account the age, gender and diversity (AGD) specificities. It will gradually implement cash-based interventions in sectors and areas where protection risks are minimal and opportunities exist, such as education and livelihood.

UNHCR and the Governments of Nigeria and Cameroon signed a tripartite agreement on 2 March 2017 to address the voluntary repatriation of Nigerians. Cameroonian IDPs in the Far North region are also expected to return to their villages of origin. A technical working group developed a plan of action for repatriation activities planned to begin in January 2018, subject to conditions for return deemed conducive.

Particular emphasis will be put on strengthening the strategic alliance with the World Bank in Cameroon. The expected allocation of funds for refugees and refugee-hosting areas under the International Development Association plan for 2018-2020 is in line with UNHCR's strategy, and complements UNHCR's humanitarian efforts in the Far North region. UNHCR will also work to maintain its partnership with the African Development Bank that has contributed funds to activities in 2015-2017 for humanitarian response in CAR and Nigeria.

# 2018 Original Budget for Cameroon | USD

The following table presents the original budget for this operation broken down at the objective level. Resource allocation at the objective level is subject to change during the course of the year as the operational situation evolves and priorities shift.

	Pillar 1 Refugee programme	Pillar 2 Stateless programme	Pillar 4 IDP projects	Total
<b>Favourable Protection Environment</b>				
International and regional instruments	0	134,094	0	134,094
Law and policy	81,193	123,544	0	204,737
Administrative Institutions and Practice	405,742	0	0	405,742
Legal remedies and legal assistance	722,134	0	499,211	1,221,345
Access to territory	845,307	0	0	845,307
Public attitudes towards persons of concern	505,683	0	0	505,683
<b>Subtotal</b>	<b>2,560,059</b>	<b>257,638</b>	<b>499,211</b>	<b>3,316,908</b>
<b>Fair Protection Processes and Documentation</b>				
Registration and profiling	2,030,015	0	254,102	2,284,117
Status determination	406,193	0	0	406,193
Individual documentation	795,406	0	115,886	911,292
Civil status documentation	778,470	272,894	293,708	1,345,072
<b>Subtotal</b>	<b>4,010,084</b>	<b>272,894</b>	<b>663,696</b>	<b>4,946,674</b>
<b>Security from Violence and Exploitation</b>				
Protection from effects armed conflict	0	0	557,209	557,209
SGBV prevention and response	1,429,568	0	458,790	1,888,358
Non-arbitrary detention	618,415	0	0	618,415
Child protection	1,951,669	0	0	1,951,669
<b>Subtotal</b>	<b>3,999,652</b>	<b>0</b>	<b>1,015,999</b>	<b>5,015,651</b>
<b>Basic Needs and Essential Services</b>				
Health	5,570,598	0	0	5,570,598
Reproductive health and HIV/ Aids response	1,624,702	0	0	1,624,702
Nutrition	2,675,883	0	0	2,675,883
Food security	702,225	0	0	702,225
Water	2,442,999	0	0	2,442,999
Sanitation and hygiene	3,701,774	0	0	3,701,774
Shelter and infrastructure	4,503,785	0	587,417	5,091,201
Energy	1,049,530	0	0	1,049,530

	Pillar 1 Refugee programme	Pillar 2 Stateless programme	Pillar 4 IDP projects	Total
Basic and domestic and hygiene Items	3,541,443	0	1,035,328	4,576,771
Services for persons with specific needs	2,908,345	0	0	2,908,345
Education	5,717,973	0	0	5,717,973
<b>Subtotal</b>	<b>34,439,258</b>	<b>0</b>	<b>1,622,745</b>	<b>36,062,003</b>
<b>Community Empowerment and Self Reliance</b>				
Community mobilization	1,362,758	0	0	1,362,758
Co-existence with local communities	836,531	0	0	836,531
Natural resources and shared environment	4,204,095	0	0	4,204,095
Self-reliance and livelihoods	6,612,772	0	0	6,612,772
<b>Subtotal</b>	<b>13,016,157</b>	<b>0</b>	<b>0</b>	<b>13,016,157</b>
<b>Durable Solutions</b>				
Voluntary return	9,849,825	0	0	9,849,825
Integration	345,880	0	0	345,880
Resettlement	640,876	0	0	640,876
<b>Subtotal</b>	<b>10,836,581</b>	<b>0</b>	<b>0</b>	<b>10,836,581</b>
<b>Leadership, Coordination and Partnerships</b>				
Coordination and partnerships	406,256	0	121,749	528,005
Camp management and coordination	1,416,192	0	0	1,416,192
<b>Subtotal</b>	<b>1,822,448</b>	<b>0</b>	<b>121,749</b>	<b>1,944,197</b>
<b>Logistics and Operations Support</b>				
Supply chain and logistics	4,733,681	0	564,797	5,298,478
Operations management, coordination and support	5,751,852	0	539,306	6,291,158
<b>Subtotal</b>	<b>10,485,533</b>	<b>0</b>	<b>1,104,103</b>	<b>11,589,636</b>
<b>2018 Original Budget</b>	<b>81,169,771</b>	<b>530,533</b>	<b>5,027,502</b>	<b>86,727,806</b>