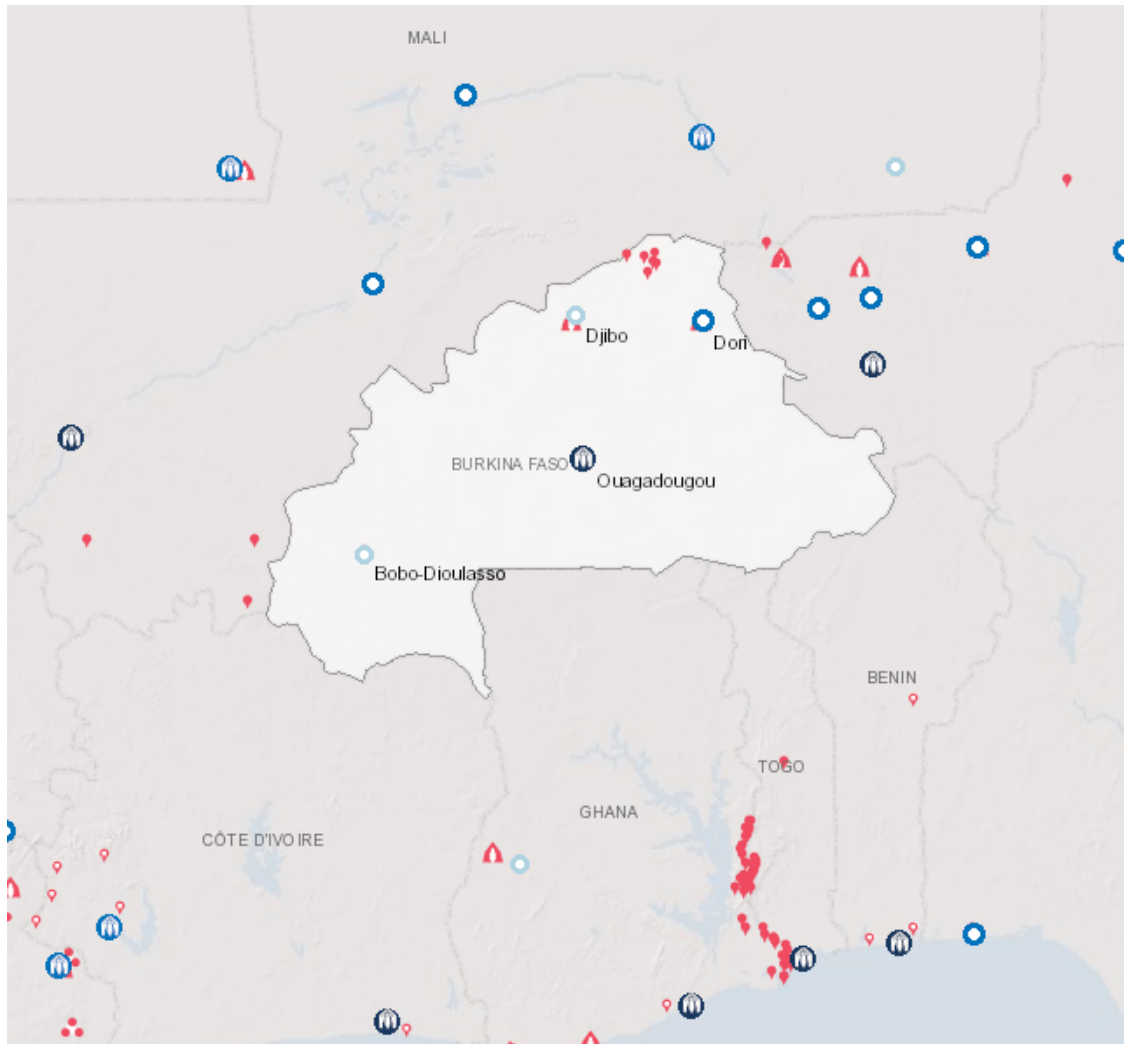


Operation: Burkina Faso

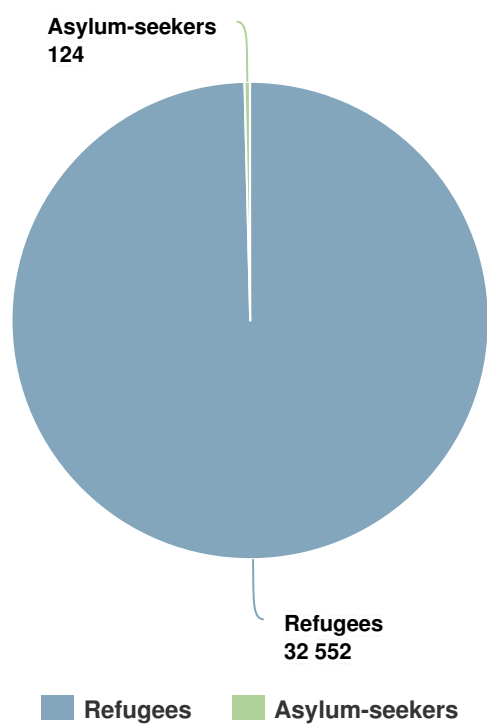


Latest update of camps and office locations: **October 2017.**

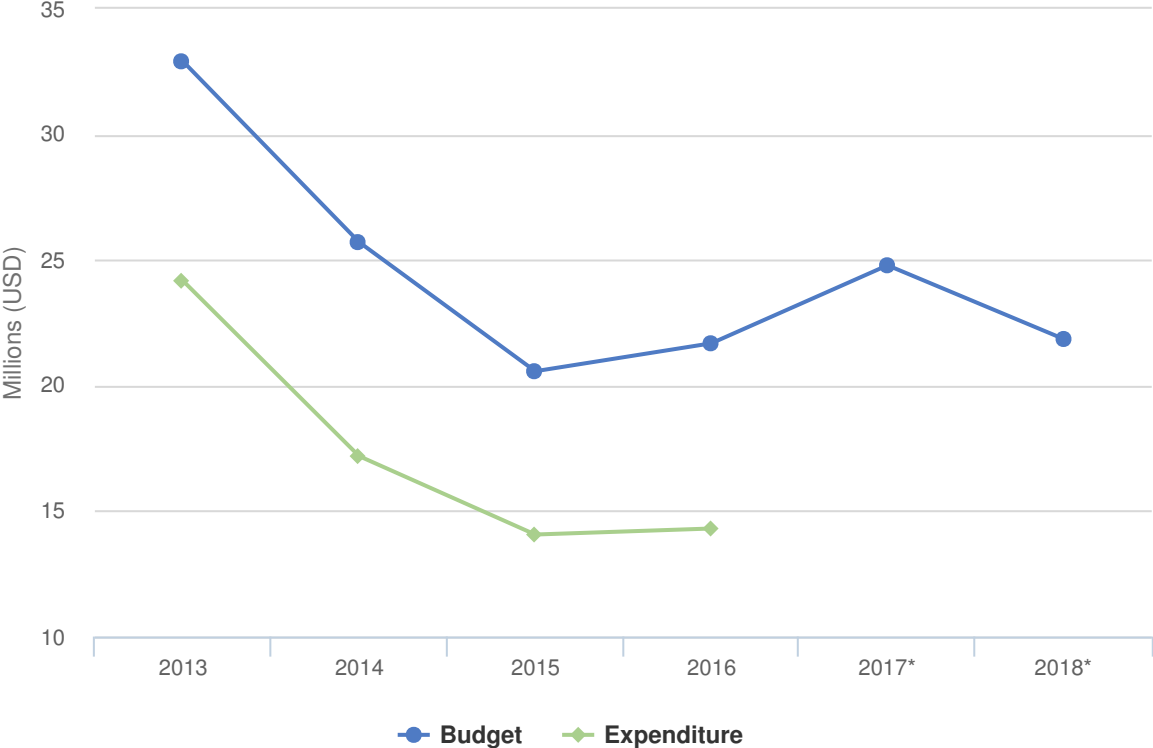
People of Concern

DECREASE IN
4% **2016**

2016	32,676
2015	34,160
2014	32,097



Budgets and Expenditure for Burkina Faso



Working environment

The operational environment in Burkina Faso continues to be characterized by the protracted refugee situation, with continuous flows and few returns taking place. Due to the recurring armed attacks in the Sahel region, humanitarian access to certain zones is limited and internal displacement continues.

The refugee population in Burkina Faso is composed of a mix of Malians and other nationalities. Some 32,000 Malian refugees are living in the Sahel region, mainly in the camps of Mentao and Goudebou, and a further 8,800 Malians are living out of camps in the Sahel region and in other urban settings. The terrorist attacks and other security incidents that the country has experienced since 2016 have led to the stigmatization of Malian refugees by the host communities, especially in the Sahel. Other challenges include poor food security perspectives for Malian refugees in the Sahel region and political challenges, such as regular strikes and sit-ins.

There are ongoing discussions with the government about recurrent trans-border movements of the refugee population settled outside the camps. UNHCR is ready to engage in the relocation of nomadic refugees and their cattle.

UNHCR continues to work at national level together with its government counterpart, *Commission Nationale pour les Réfugiés*, NGO partners and other UN agencies.

Key priorities

In 2018, UNHCR will focus on:

- Maintaining a favorable protection environment in difficult security situation;
 - Implementing durable solutions: 1) economic self-reliance through professional training and capacity building in the field of craftwork business, herd management and milk production; 2) facilitated repatriation;
 - Promoting peaceful co-existence with host communities;
 - Integrating refugees into development programmes and projects;
 - Reducing the number of stateless persons in Burkina Faso;
 - Formulating a mixed movement strategy.
-