



# SYRIA IDP OPERATIONS 2016

Produced By UNHCR Syria Reporting Unit  
[syrdareporting@unhcr.org](mailto:syrdareporting@unhcr.org)

Valid as of 05/12/2016



# CORE RELIEF ITEMS (CRIs) IN 2016

CRI Dispatch in 2016, amounts to **2,406,254** individuals

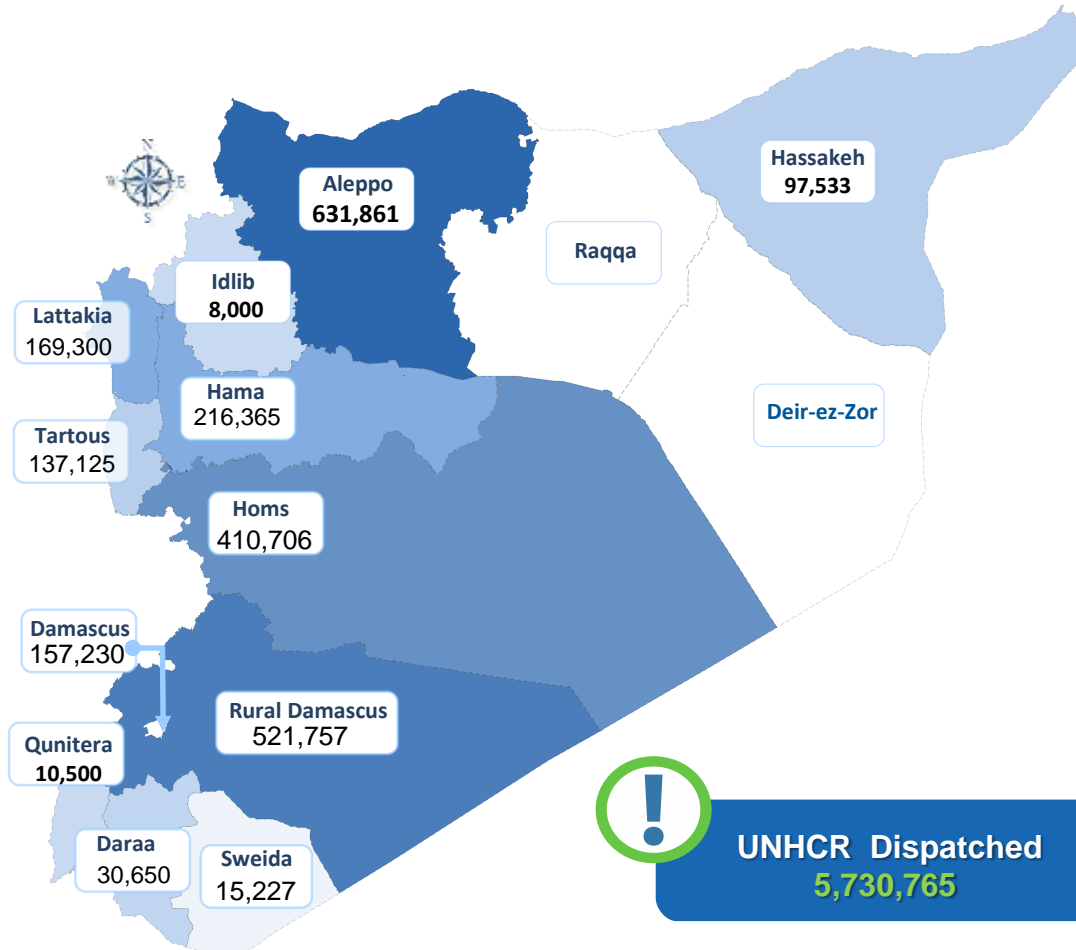
## 2,406,254 Beneficiaries of CRI by location

### Distribution Methodology :

CRIs are distributed in accordance with the needs assessed by UNHCR staff and by implementing partners on the ground.

In areas where everything is needed families receive a CRI Family Kit. The composition of which is:

CRI Family Kit	
3 Mattresses	5 Blankets
3 Sleeping mats	2 Jerry can
Diapers	Sanitary napkins
1 Kitchen Set	1 Hygiene Kit
1 Plastic Sheet	
<b>Winter:</b> 1 extra plastic sheet +1 family winter clothing kit	
<b>Supplementary Items:</b> (Targeting Those Most in Need) Solar Lamps, Sleeping Bags, Winter Jackets , Thermal Underwear	



**2,406,254** Beneficiaries

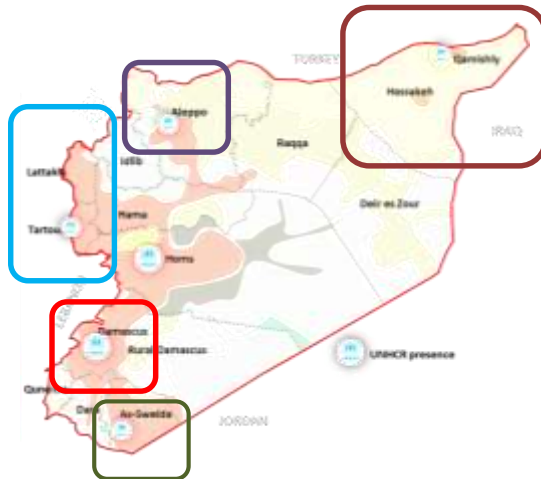
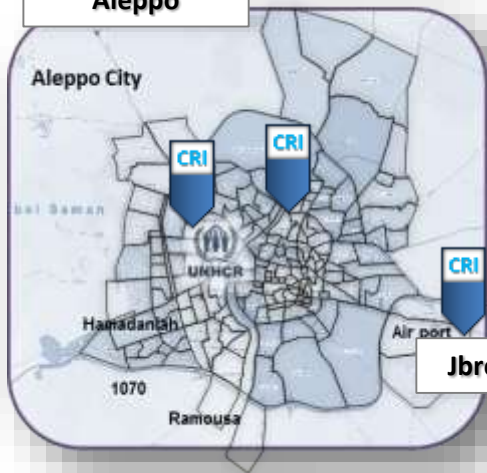
Valid as of 05/12/2016



# CORE RELIEF ITEMS (CRIs) in 2016

## Main Locations reached with CRIs between 28 Nov to 5 Dec 2016

### Aleppo



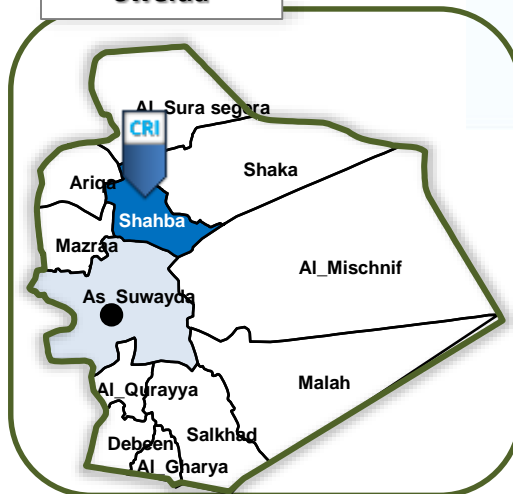
### Al Hassakeh



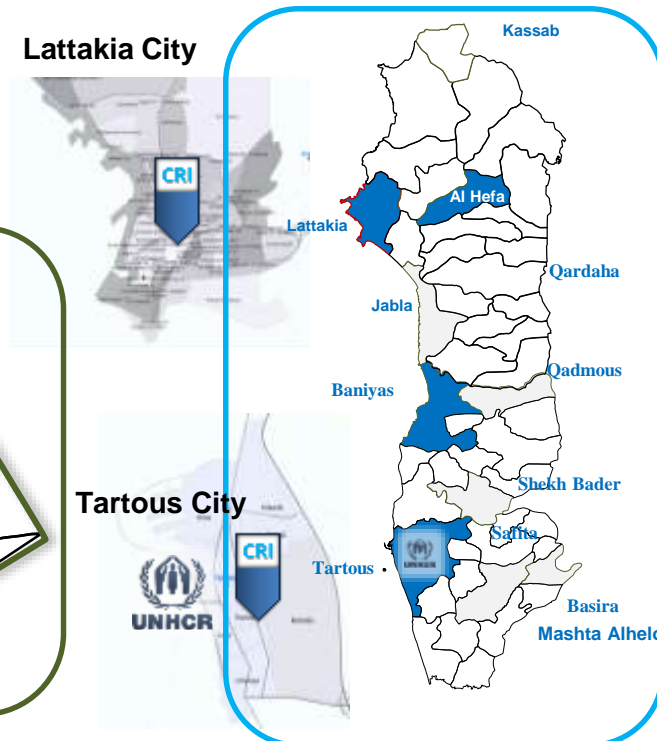
### Damascus



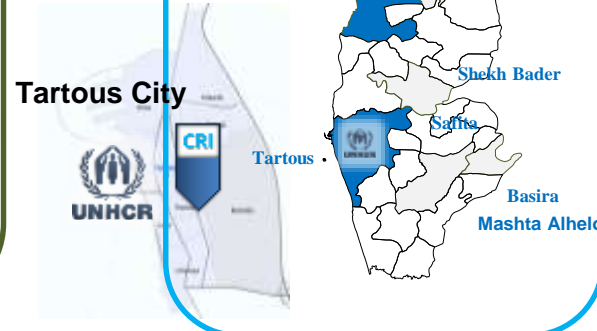
### Sweida

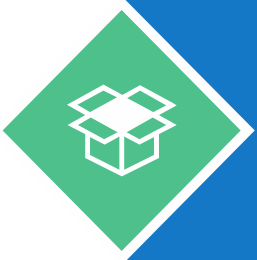


### Lattakia City



### Tartous City



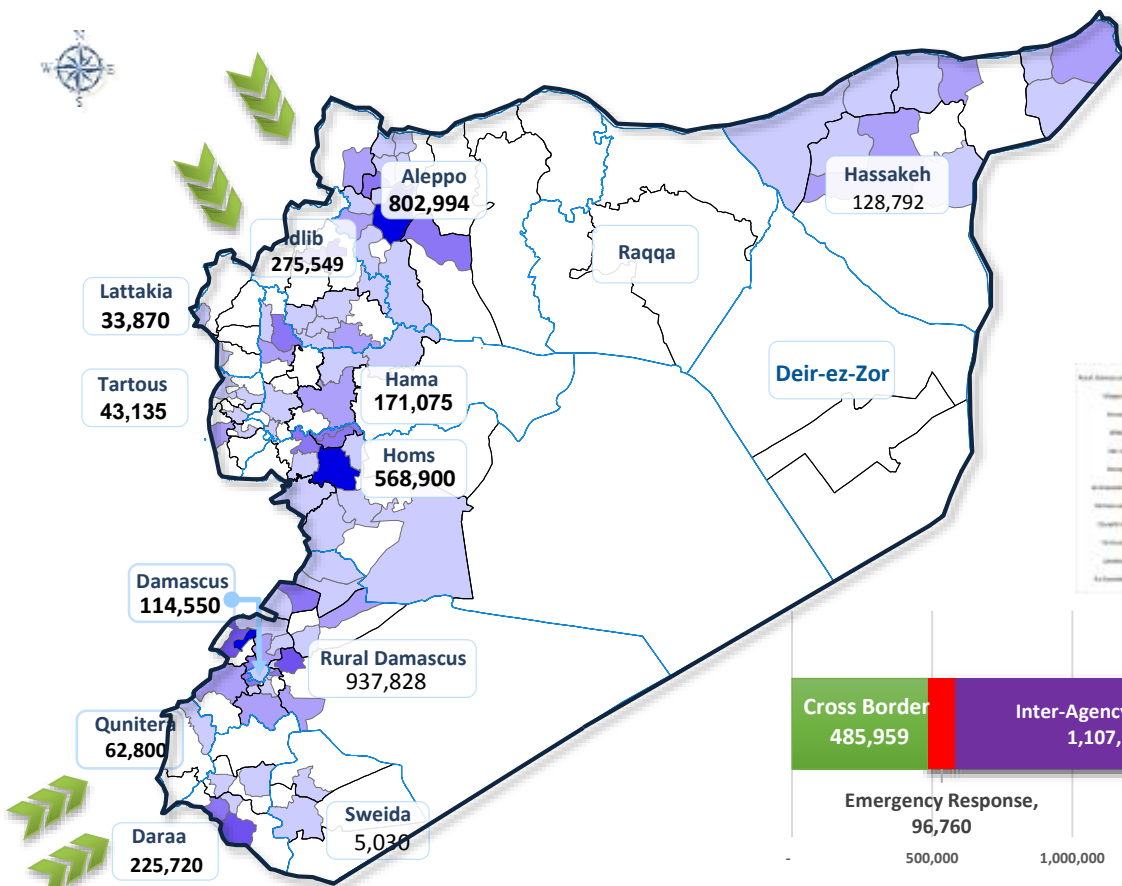


# CORE RELIEF ITEMS (CRIs) IN 2016

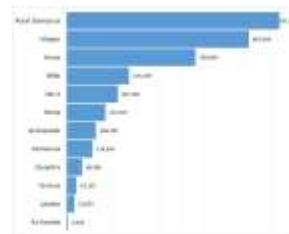
UNHCR Jan – Oct 2016

CRI Distribution in 2016, amounts to **3,375,828** individuals

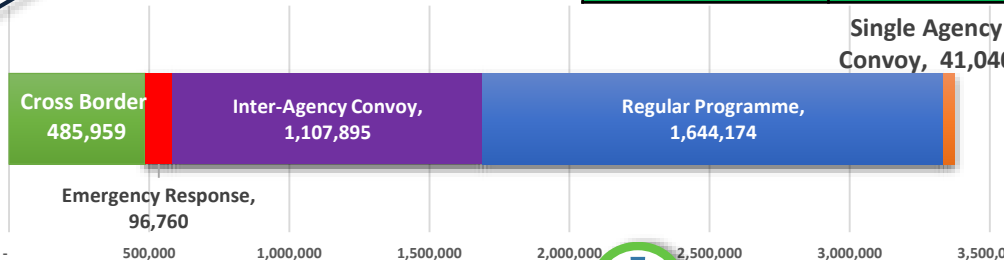
## 3,375,828 Beneficiaries of CRI by location



Gov	BSG	HTR	Grand Total
Aleppo		67,040	67,040
Al-Hasakeh		76,371	76,371
Dar'a		10,825	10,825
Hama		32,000	32,000
Homs	115,165	336,880	452,045
Idleb	65,800	2,500	68,300
Rural Damascus	305,650	188,280	493,930
<b>Grand Total</b>	<b>486,615</b>	<b>713,896</b>	<b>1,200,511</b>



Row Labels	Cross Border
Quneitra	38,125
Aleppo	39,250
Dar'a	199,085
Idleb	209,499
<b>Grand Total</b>	<b>485,959</b>



Single Agency  
Convoy, 41,040

Locations approximate. For graphical representation only. Not for detailed planning. Boundaries and locations shown do not imply official acceptance by the United Nations



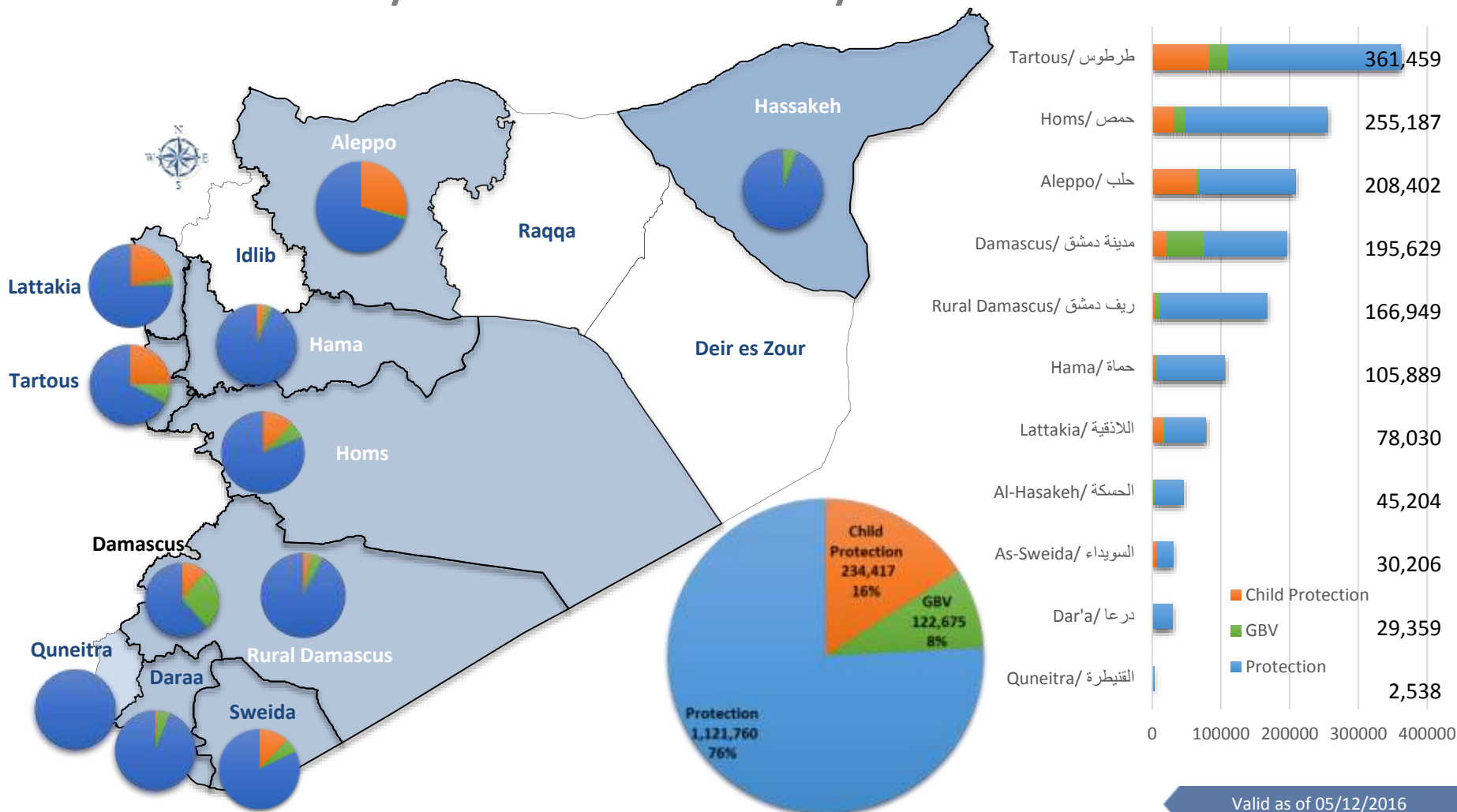
**UNHCR Distributed**  
**4,430,817 CRIs**



# PROTECTION IN 2016

## 1,478,852 Beneficiaries

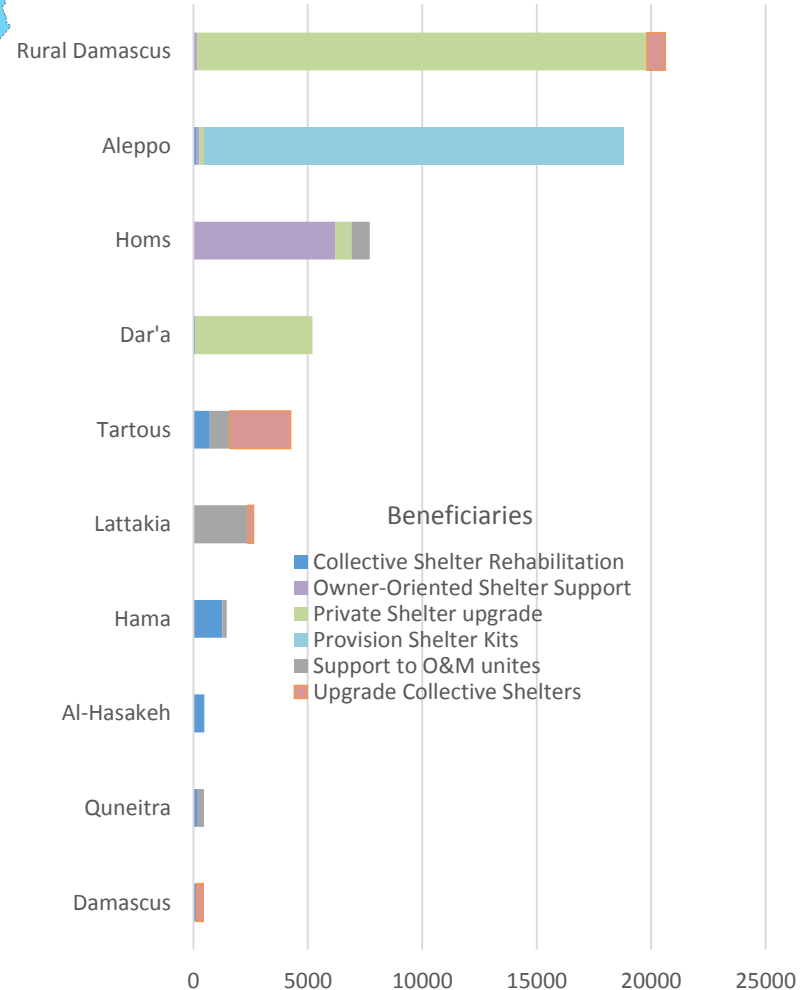
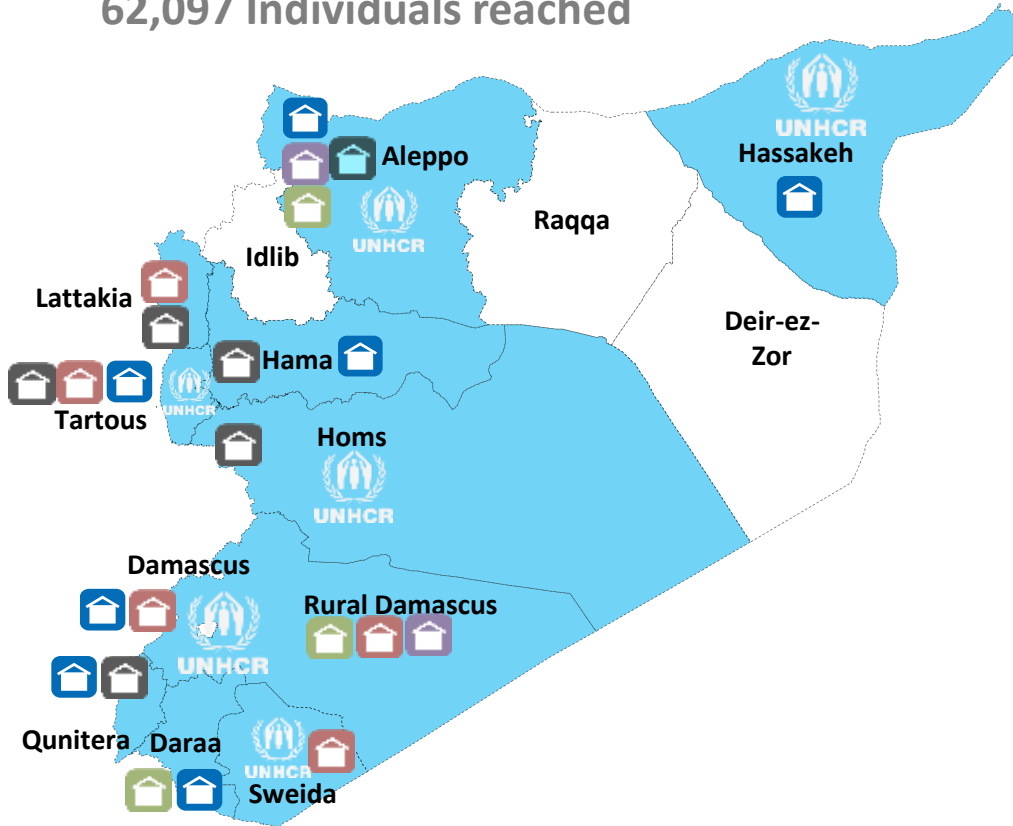
### Reached by Protection & Community Services Interventions





# UNHCR SHELTER Activities 2016

62,097 Individuals reached



Activity	Individuals Reached
Collective Shelter Rehabilitation	2,972
Owner-Oriented Shelter Support	6,462
Private Shelter upgrade	25,719
Provision Shelter Kits	18,328
Support to O&M unites	4,550
Upgrade Collective Shelters	4,066
<b>Grand Total</b>	<b>62,097</b>

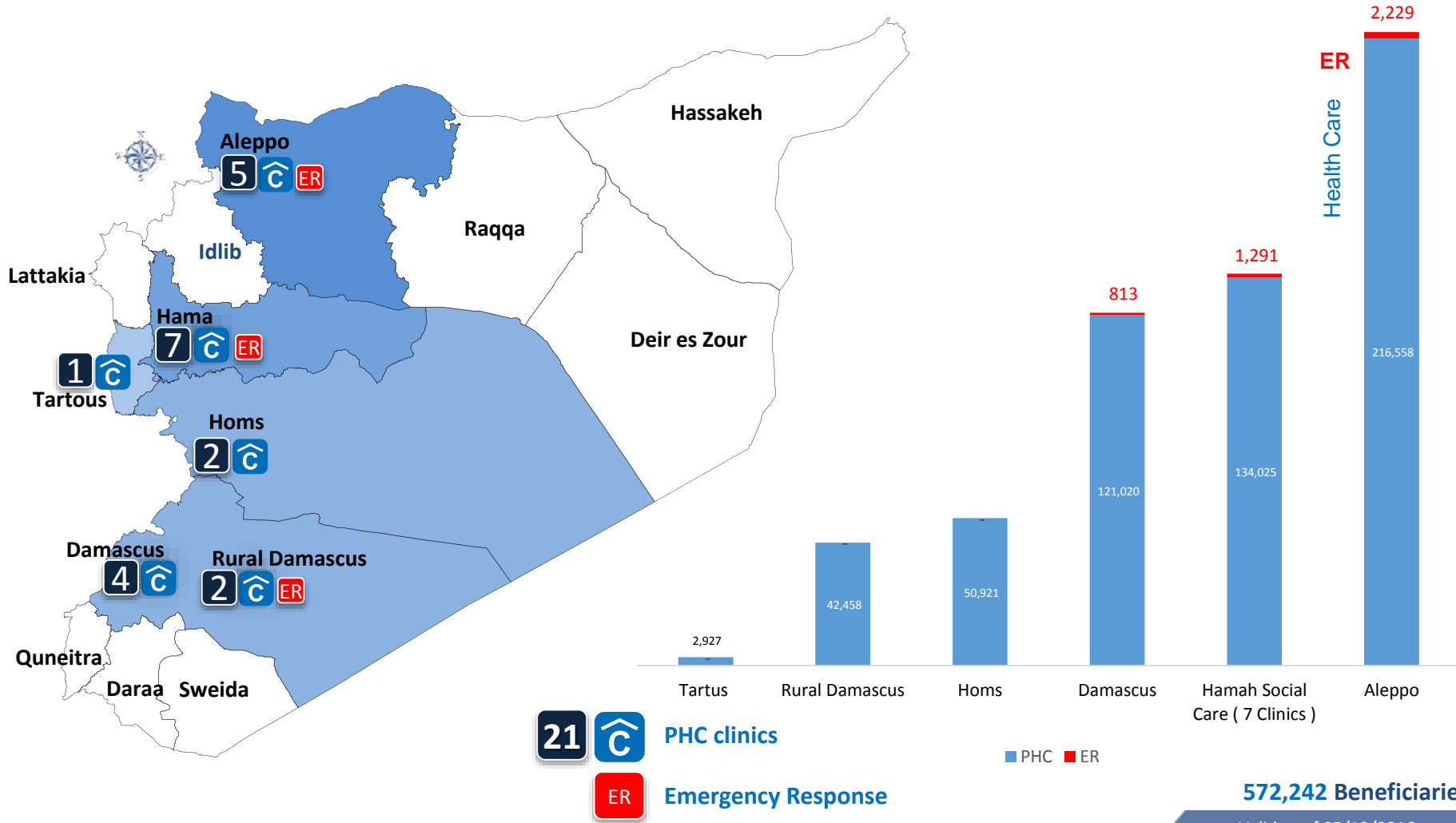
62,097 Individuals

Valid as of 05/12/2016



# HEALTH IN 2016

## 572,242 Beneficiaries Have access to Health Care



572,242 Beneficiaries

Valid as of 05/12/2016

Al-Nabek Clinic (rural Damascus) & Alzahra Clinic in Homs were handed over to IMC.



# WINTERIZATION PROGRAMME 2016

## 923,911 Beneficiaries assisted

(184,011 Families) With 757,732 items

