



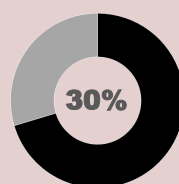
ALEPPO: Despite the destruction, population are returning to their residences in Seif Ad Dawleh district. ONG Rescate is among the sector partners who are providing shelter rehabilitation support in this locality.

© Rescate Syria

MAJOR HIGHLIGHTS

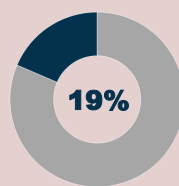
- The coordination team conducted a field visit to Homs, Latakia, and Tartous. In general, the mission reveals that the quality of housing rehabilitation is satisfactory but more work still needs to be done. It was found out that the need for shelter rehabilitation remains huge in northern parts of rural Latakia and there has been no assessment carried out yet in the area. Also, the mission reveals that more focus must be given to return and durable shelter solutions.
- In Aleppo, the technical assessment to rehabilitate 100 apartments continues in Al-zebdiyea neighborhood by PUI while SIF has launched the tendering phase to rehabilitate 100 apartments in Midan, Al Zahraa, Sief Al Dawle neighborhoods. GOPA on the other hand is working on the installation of the shelter kits in private apartments inhabited by displaced families and the owners who are living in informal neighborhoods.
- The IM team of the sector participated in the Data Analysis Workshop in Amman, Jordan from 27th to 31st of August. Based on the datasets that were gathered, the severity map and PIN map were developed. The key results and findings will contribute to the development of Humanitarian Needs Overview for 2018.

KEY DIGITS



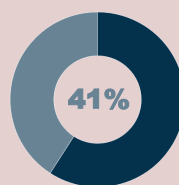
4.3 million
people in need (PiN) of shelter

Estimate number of people in need of shelter within Syria hub's AoR (30% of the estimated 13.5 million total people in need of humanitarian support in 2017)



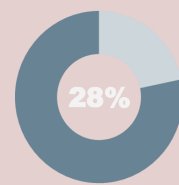
742,000
PiN targeted entire Syria in 2017

Estimate number of targeted people in need of shelter in Syria (19% of the estimated 4.0 million people in need of shelter in 2017)



303,385
PiN targeted by Syria Hub in 2017

Estimated number of targeted people in need of shelter by Syria Hub (41% of the estimated 742K targeted people in need in Syria in 2017)



84,212
people assisted

Total beneficiaries assisted by shelter projects since January 2017 (28% of 303,385 targeted people in need by Syria Hub)



201
shelter projects planned/
implemented

Total number of shelter projects planned/implemented since January 2017



25
shelter sector partners

Number of active shelter sector partners with operational presence



GAPS AND CHALLENGES

- In Aleppo, lack of property ownership documentation affects the ability of population to avail shelter support;
- Continued reports of remnants of war in rural areas of Aleppo governorate prevent some displaced persons from returning to their homes;
- Lack of financial resources to rehabilitate damaged houses in places of origin such as Aleppo continue to discourage the return of IDPs;
- Limited access to hard-to-reach areas and lack of long-term presence impede the provision of proper shelter support;
- In most cases, available shelters are not enough to accommodate newly displaced persons;
- The operational capacity of the sector is insufficient to meet the needs.

CRISIS BACKGROUND: *The crisis in the Syrian Arab Republic that started in March 2011 has transformed into a complex emergency that has displaced around 6.3 million people and forced around 4.8 million people out of the country to seek asylum. As per the 2017 Humanitarian Needs Overview, around 13.5 million people are in need of humanitarian assistance of which around 4.3 million people are desperate to receive adequate shelter support and other multi-sectorial assistance as they continue to struggle in an unsafe and uncertain environment. Due to the protracted nature of the hostilities, many of both displaced and host communities become more vulnerable and their ability to cope and find safe and durable shelter solutions has been greatly affected. The humanitarian community has been challenged to both provide emergency and life-saving shelter solutions while building back community cohesion and resilience through provision of sustainable shelter assistance.*



ALEPPO: Mukhtar of Seif Ad Dawleh showing the area of interventions.

© Rescate Syria



PARTNER IN FOCUS

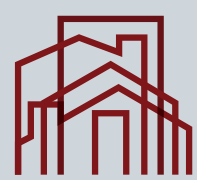
Rescate is a Spanish non-profit, non-political and secular non-government organization working since 1960 for the population affected by crisis. Its vision is to support the reconstruction and empowerment of affected populations in the developing countries, where groups of displaced people and refugees live, who, together with the local population, need protection and assistance in order to meet their needs. Rescate helps the vulnerable populations to find long-term solutions. Solidarity, responsibility, respect, dignity, equality, justice and peace promotion are among its fundamental values.

RESCATE has an operational presence in Syria since 2001 but was only registered in April 2016. They have been working with ACSAD, BISSAN and FIRDOS in several projects focusing on community centers management, food security, women and children health care, and women empowerment. Rescate has been raising awareness in the Spanish society about its work with refugees and displaced populations.

Operating in Aleppo and Lattakia governorates, Rescate is among the active partners of the Shelter Sector and currently they are rehabilitating 477 apartments in Aleppo governorate together with Syria Trust for Development.

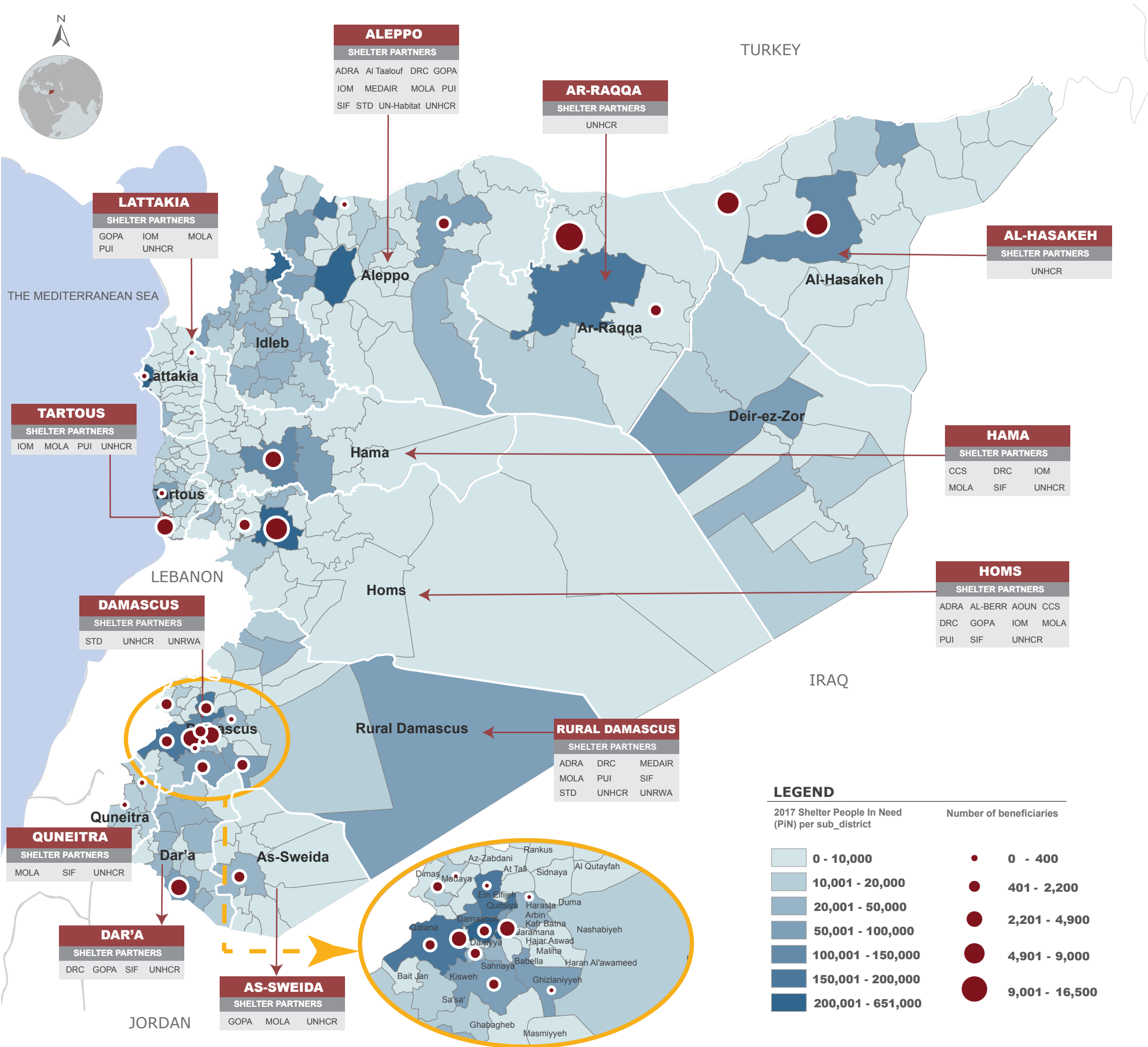
Shelter Sector Coordination Team

- Pankaj Kumar Singh, Shelter Sector Coordinator (singhpa@unhcr.org)
- Bareaa Alkafre, Asst. Sector Officer (alkafre@unhcr.org)
- Muhammad Shazad, IM Officer (shahzadm@unhcr.org)
- Corazon C. Lagamayo, IM Officer (lagamayo@unhcr.org)
- Maha Shaaban, IM Associate (shabanm@unhcr.org)
- Ashraf Zedane, IM Associate - Aleppo (zedane@unhcr.org)



SYRIA: SHELTER SECTOR RESPONSE SNAPSHOT

Reporting Period: January - August 2017

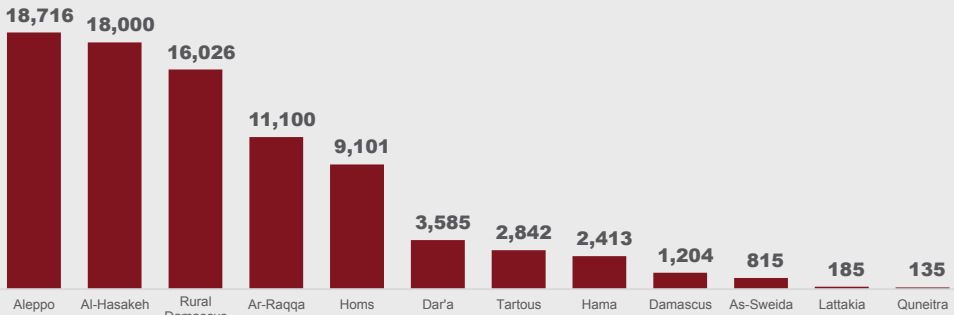


TOTAL BENEFICIARIES COVERED

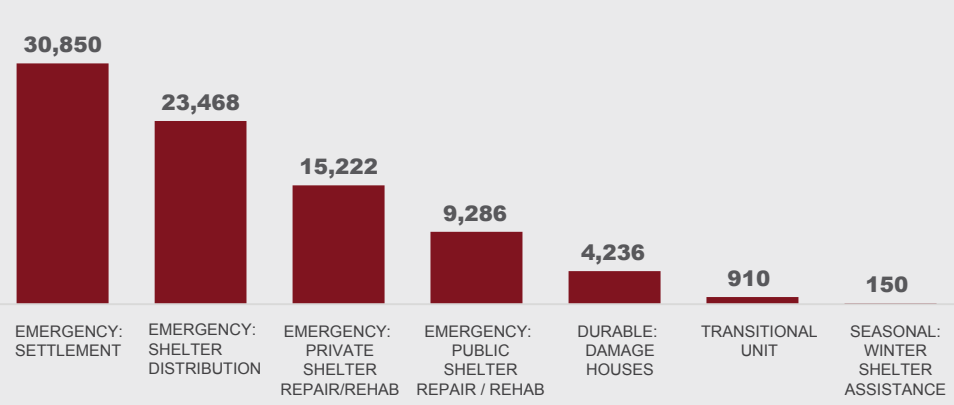
84,212 4.3 M OVERALL PEOPLE IN NEED (PIN)
742 K TARGETED PIN / HRP 2017

28% OF 303,385 TARGETED PIN (IN SHELTER) BY SYRIA HUB

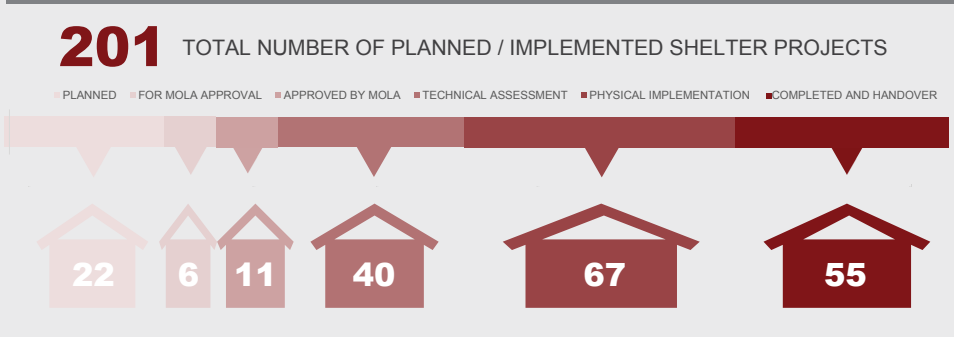
BENEFICIARIES COVERED PER GOVERNORATE



BENEFICIARIES COVERED BY TYPE OF SUPPORT



NO. OF SHELTER PROJECTS PER STAGE



SHELTER SECTOR PARTNERS

CO-LEAD AGENCIES			
ACF	ADRA	AL BIRR	AL Ihsan
AL INSHAAT	AOUN	CHILD CARE SOCIETY	Church of Kanisat
DRC	IOM	MEDAIR	NRC
GOPA	OXFAM	PUI	Rebuild Syria
RESCATE	SARC	SIF	Social Care Charity
SSSD	STD	UN-Habitat	UNRWA