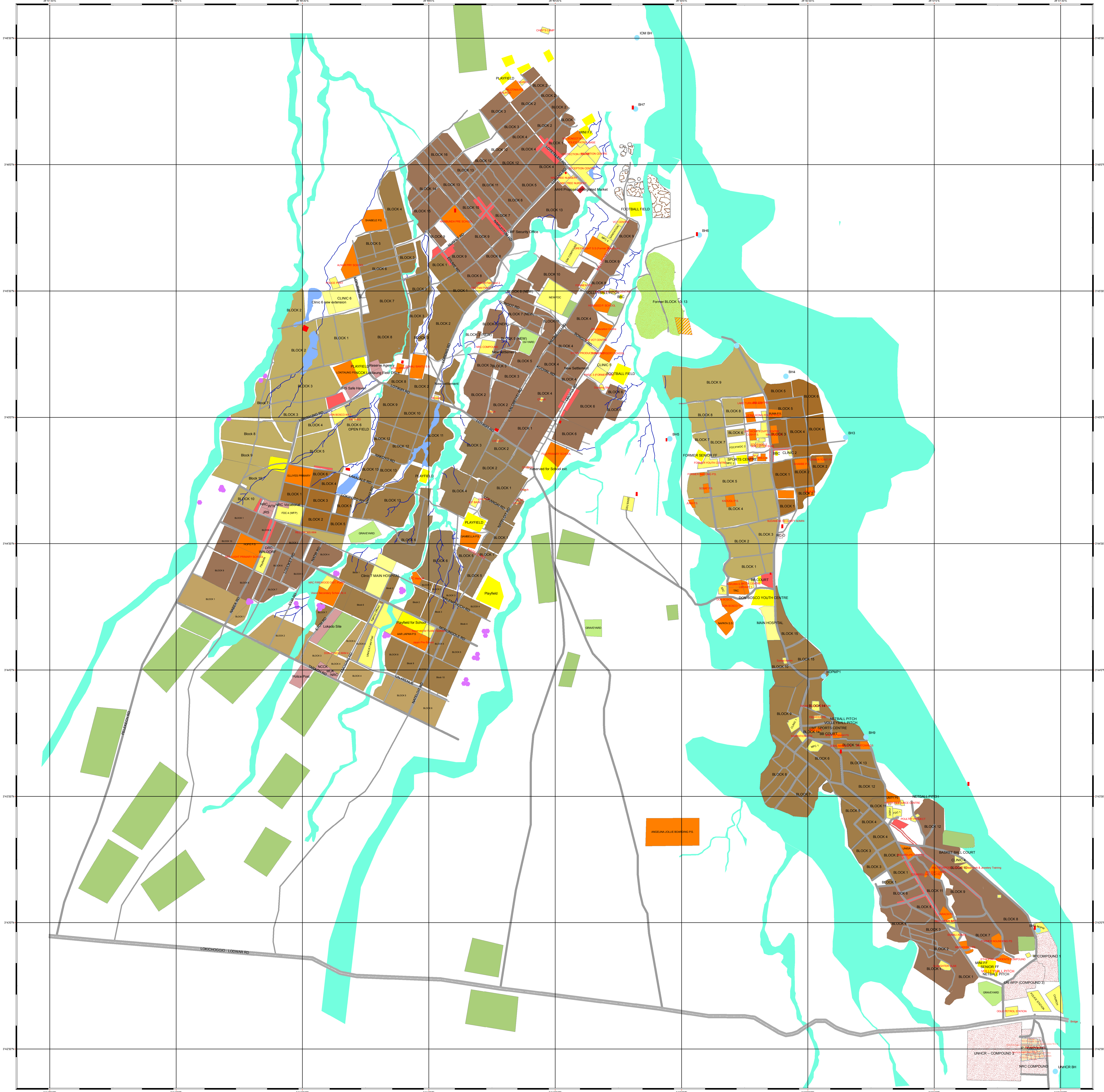


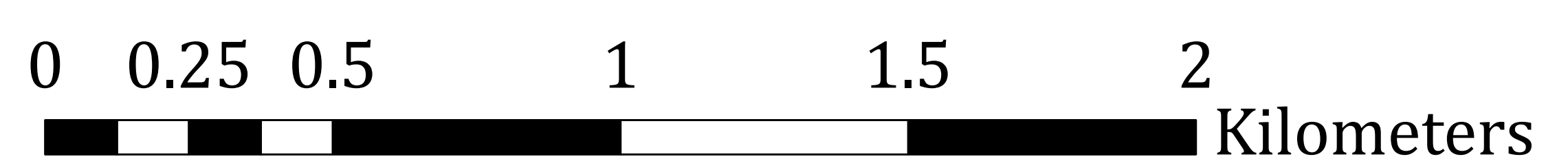
# KAKUMA REFUGEE CAMP



## LEGEND

- |                   |                                 |                         |                                       |
|-------------------|---------------------------------|-------------------------|---------------------------------------|
| KKM 1 ZN 1 BLOCKS | KKM 4 ZN 1 BLOCKS               | TARMAC ROAD             | MINOR LAGGA DEPRESSION                |
| KKM 1 ZN 2 BLOCKS | KKM 4 ZN 2 BLOCKS               | MAJOR CAMP ROAD         | AGENCIES COMPOUND                     |
| KKM 1 ZN 3 BLOCKS | KKM 4 ZN 3 BLOCKS               | MINOR CAMP ROAD         | GREENBELT                             |
| KKM 1 ZN 4 BLOCKS | AGENCIES FIELD OFFICES          | LAGGA                   | AGENCY FIELD OFFICES                  |
| KKM 2 ZN 1 BLOCKS | PROPOSED AAHI NEW MARKET        | HEALTH FACILITY         | BRICK HARVESTING SITE                 |
| KKM 2 ZN 2 BLOCKS | IPs Compound 3 PLOTS            | EDUCATION FACILITY      | RECREATIONAL FACILITY                 |
| KKM 3 ZN 1 BLOCKS | 3 ACRES AAHI FARM BOUNDARY      | MARKET                  | PATHS & TRAILS                        |
| KKM 3 ZN 2 BLOCKS | ELEVATED TANK                   | FLOODING AREA           | HOST COMMUNITY VILLAGE                |
| KKM 3 ZN 3 BLOCKS | ISLAND RESERVED FOR AGRICULTURE | OTHER PUBLIC FACILITIES | AGRICULTURE AND HORTICULTURE TRAINING |
| KKM 3 ZN 4 BLOCKS | BOREHOLE                        | GRAVEYARD               |                                       |

DATUM WGS 1984  
PROJECTION UTM ZONE 36N



CAMP PLANNING AND INFORMATION  
UNITS SOURCES:  
UNHCR/NCKK-KAKUMA

MAP PRODUCED FOR CAMP PLANNING PURPOSES ONLY

No part of this map shall be reproduced  
in any way for any purpose other than that  
stated above or without prior written consent  
of UNHCR/RAS/NCKK



May, 2017