



ACTIVITY INFO Reporting Guide - 2015

SHELTER SECTOR

Inter-Agency Information Management Working Group

Jan 2015

*This Document details the steps required for all reporting partners to follow to be able to gain access to Activity Info Database for the Shelter sector and be able to report on a monthly basis.
For any clarification needed about this document please contact the relevant sector lead or IM focal point.*

Contents

INTRODUCTION	2
HOW TO GET ACCESS TO THE SECTOR REPORTING DATABASE.....	2
START ACTIVITY INFO	2
FUNCTIONS OF ACTIVITY INFO	3
CREATE A NEW FORM (intervention).....	3
REPORT ON MONTHLY INDICATORS	5
Specify planned interventions:	5
Report on achievements:	6



INTRODUCTION

In Lebanon monitoring and reporting for 2015 programmes is done through different databases organized by sector working group. Sector databases may be organized in different ways to fit with specific requirements.

Each database allows to store, access, manage, map and analyze data on defined indicators, and thus to monitor humanitarian projects.

HOW TO GET ACCESS TO THE SECTOR REPORTING DATABASE

In order to get access to the sector database relevant to your projects please click on this link - and compile the form as requested. We will receive your request and provide you with access within 24 hours.

You can also get access by contacting the IM officer in charge of the sector or the National Level Sector Coordinator.

START ACTIVITY INFO

To start the program, type the following web address: www.activityinfo.org

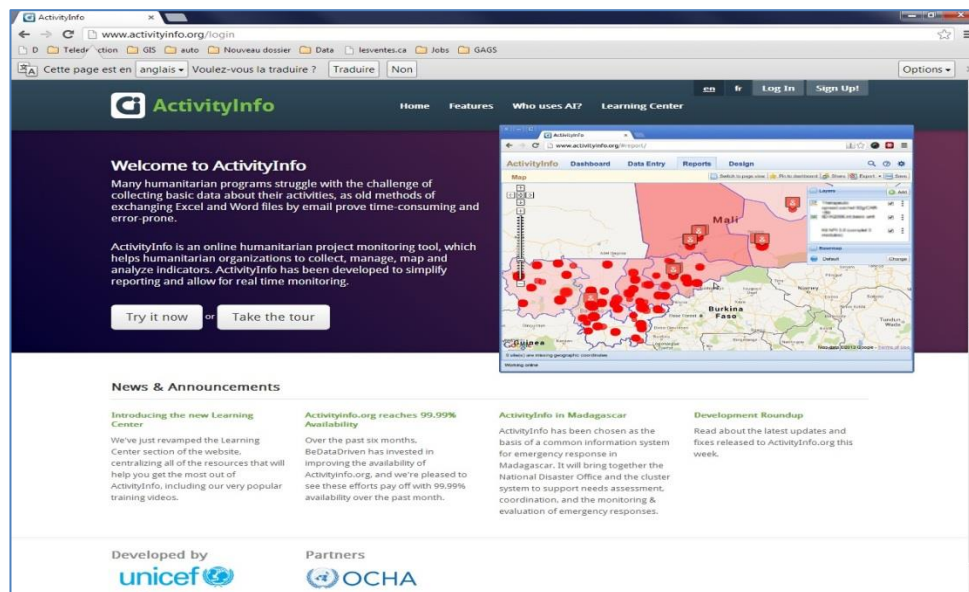


Figure 1

You have the option to choose one of the possible languages, French or English.

Then you can log in by clicking **Log In**. You must first submit a request for invitation to access the



database. Note that access is granted for a single sector alone. An invitation will then be sent to you, and then you can create your password. If you have already access to ActivityInfo you will not receive any invitation once granted access to any new database.

FUNCTIONS OF ACTIVITY INFO

ActivityInfo has four main functions:

- Dashboard
- Data Entry
- Generate Reports (charts, maps, pivot tables and custom reports)
- Design database

This guide will focus on the **Data Entry tab for the SHELTER sector.**

CREATE A NEW FORM (intervention)

Reporting to be done once a month – by the **7th** of each month covering the achievements of the month before. Click here to download the calendar -

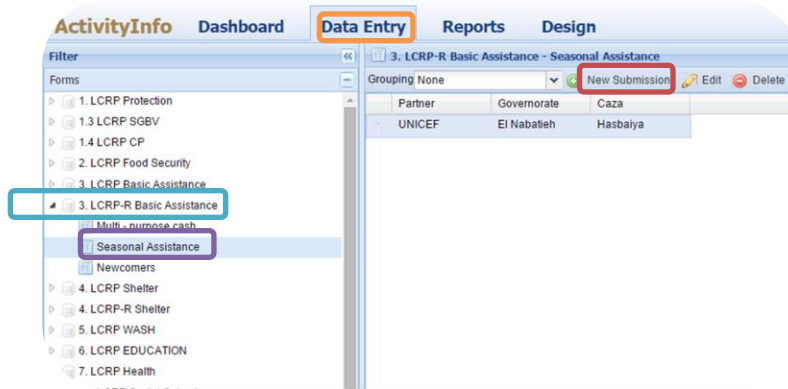
Shelter indicators have been structured based on 5 different types of interventions in different location types under the sector:

- Informal / Formal Settlements and Gatherings
- Collective Centres
- Cash for Shelter
- Occupied/Unoccupied buildings
- Neighborhood approach/Lease support

Each activity has a unique set of indicators. If an organization is working on more than one intervention type, reporting is to be done **separately** under all of these activity tabs.

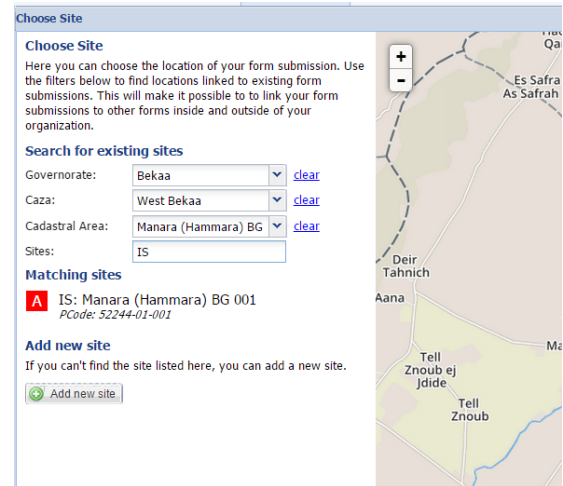
Once logged in follow the steps as shown below:

- Click on the **DATA ENTRY** tab
- Open the **LCRP-R Shelter** database by clicking on the little arrow to the right
- Select the relevant **INTERVENTION**
- Click on **NEW SUBMISSION**



After clicking on **New Submission** the following window will be prompted:

- 1) Select the relevant site where you are implementing the activities under the selected interventions by following the hierarchy of Governorate – Caza – Cadastral.
- 2) To find the pre-loaded location name please type in the following codes for:
 - IS: Informal settlement
 - SCH: School
 - PHC: Primary Health Care Centre/Clinic
 - SHC: Hospital
 - MMU: Mobile Medical Unit
 - Vill: Village
 - SDC: Social Development Centre
- 3) Click on the relevant site and click on **USE THIS SITE**.



After clicking on **Use this Site** the following window will be prompted.

Click on **Intervention Details:**

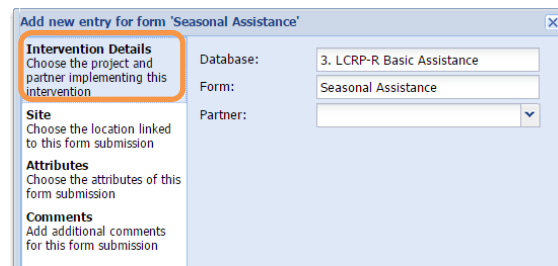
- 1) Select the partner agency you are working for

Click on **Site:**

- 2) This is already filled with the information of the site you have selected previously

Click on **Attributes:**

- 3) Specify if this intervention was appealed for in LCRP 2015
- 4) Specify your funding agency - which is to identify the donor UN Agency of the activity, if the activity is





funded by other sources than it is to be indicated by 'Independent'.

Click on **Comments:**

5) Add any comment that will help you in identifying the site for next reporting period

To proceed click on '**Save**' at the bottom of the tab. This will create the site with the relevant attributes and details on move to the main entry page, the created site will appear as a row see figure 12.

IMPORTANT: All the indicators are monthly indicators, thus creating a site and adding attributes is **done once**. You would create the site of implementation of the programme once and then update the numbers monthly.

REPORT ON MONTHLY INDICATORS

- 1) Select the relevant form that you created as per guidelines above.
- 2) See the interventions details at the bottom of the page that specify the attributes and comments on this site.

The screenshot shows the 'Data Entry' tab in the ActivityInfo system. The main form is titled '3. LCRP-R Basic Assistance - Seasonal Assistance'. It includes a 'Filter' sidebar on the left with various form categories like '1. LCRP Protection', '2. LCRP Food Security', and 'RRP6' categories. The main form area has a 'Grouping' dropdown set to 'None' and buttons for 'New Submission', 'Edit', 'Delete', 'Import', and 'Export'. Below this is a table with columns: Partner, Sites, Governorate, Caza, and Cadastral Area. The table contains one row with the following data: Partner: UNHCR, Sites: IS: Manara (Ha... PCode: 52244-..., Governorate: Bekaa, Caza: West Bekaa, Cadastral Area: Manara (Hamm...). Below the table is a 'Page 1 of 1' indicator. The 'Comments' section contains the text: 'Comments: Winter assistance to Displaced Syrians and PRS', 'LCRP Appeal: Yes', and 'Funded by: Independent'. At the bottom, there are tabs for 'Details', 'Monthly Reports', 'Attachments', and 'History'.

Click on '**Monthly Reports**' Tab to access the indicator and reporting table.

Specify planned interventions:

Indicators are organized in **the monthly report tab** under indicator headings (i.e. -- Seasonal Cash Grants----). Please type in **1** on the month(s) in which your agency is funded for carrying out this activity.

This will allow coordinators to know where and until when your organization will be present in such location for the activity specified. (see example below – the partner is funded to carry out Seasonal Cash Grants from January to March 2015 only: you can see that the reporting partner has typed **1** in the relevant months.



Monthly Reports					
Saved Month: Jan 2015					
Indicators	Dec 14	Jan 15	Feb 15	Mar 15	Apr 15
----- Seasonal Cash Grants -----					
		1	1	1	
DisSyr - # male - headed HH receiving seasonal cash grants		100			
DisSyr - # female - headed HH receiving seasonal cash grants		56			
DisSyr - # child male - headed HH receiving seasonal cash grants					
DisSyr - # child female - headed HH receiving seasonal cash grants		66			
PRS - # male headed - headed HH receiving seasonal cash grants					
PRS - # female - headed HH receiving seasonal cash grants					
PRS - # child male - headed HH receiving seasonal cash grants					
PRS - # child female - headed HH receiving seasonal cash grants					
LebRet - # male - headed HH receiving seasonal cash grants					
LebRet - # female - headed HH receiving seasonal cash grants					
LebRet - # child male - headed HH receiving seasonal cash grants					
LebRet - # child female - headed HH receiving seasonal cash grants					
Total USD amount distributed		1,000,000			

Report on achievements:

The monthly reporting tab is where data is entered on indicators at site level. The indicator text starts with definition of the disaggregation, followed by the description of the indicator. For example, ‘DisSyr - # male headed HH receiving seasonal cash grant’ – to be reported: the number of Displaced Syrians male headed households who received seasonal cash grant on the specific month.

IMPORTANT: Cash related indicators are accompanied by another indicator that requires to specify the amount of USD transferred to the individuals.

After inputting the indicators values for that particular month and site, press ‘Save’ on the tab. Note that you have to press Save every time you update your figures.

There are two additional tabs on the below ribbon. “Attachments” and “History” the former is to upload any supporting document at that site level and the latter keeps a history of who edited what and when.

This concludes the entry process. The same process is to be carried out for all the other sites to report on implementation of a month.