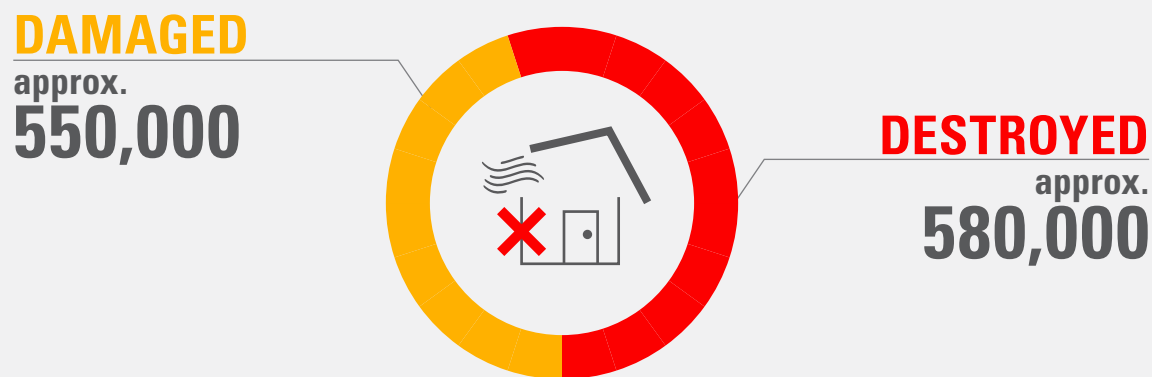


Typhoon Haiyan

Typhoon Haiyan (locally known as Yolanda) swept through the central Philippines on 8 November 2013, killing more than **6,000** people and displacing **4 million**.

February 14, 2014

1.1 MILLION HOUSES DAMAGED OR DESTROYED



HUMANITARIAN ASSISTANCE

Source: DSWD/NDRRMC

The Government has asked humanitarian organisations to address the most urgent shelter needs of **500,000** households — approximately **2.5 MILLION** people. The remaining families will be assisted directly by the government.



On average, 1 household consists of 5 people in the Philippines

100 DAYS

During the first 100 days of the response, Shelter Cluster partners have achieved the following:

500,000

households have received **basic emergency shelter materials** such as tarps and tents

370,000

households have received **basic, shelter-related household items** such as mats and blankets

100,000

households have received **kitchen sets** that contain pots and pans, cutlery, bowls, cups, plates etc

61,000

households have received **building materials** for walls, frames, floors etc

54,000

households have received **roofing materials** such as corrugated iron sheeting

40,000

households have received **cash** with which they can buy building materials or pay for labour. This is particularly important for those who cannot repair or rebuild their homes themselves

2,000

households have received **transitional or "core shelters"** — these are small, sturdy houses with one room that can be extended or upgraded by the families

170,000

households have **access to tools** such as hammers, saws, shovels etc

700

carpenters have been trained in **safe building techniques**

Source: Shelter Cluster

Despite these achievements, the Philippines are still facing a shelter emergency: on average, the country is hit by 20 major storms per year. This year, the survivors of Typhoon Haiyan already have faced two storms which damaged and destroyed emergency shelter materials in their paths. It is clear that many families will still be living under tarps, leaking and unstable roofs, or in tents when the next typhoon season starts.