

Key Findings of VARON 2017

(Vulnerability Assessment of Refugees of Other Nationalities in Lebanon)



UNHCR
The UN Refugee Agency

UNHCR is pleased to present the Vulnerability Assessment of Refugees of Other Nationalities (VARON) 2017, an annual report on Iraqi, Sudanese, Ethiopian and other refugees and asylum-seekers in Lebanon from countries other than Syria. The influx of more than a million refugees from Syria since 2012 has partly overshadowed the plight of other refugee communities, many of whom have been in Lebanon since before the Syrian crisis. The VARON aims to shed light on their situation. Between November 2016 and April 2017, assessments were conducted with 4,876 refugee and asylum-seeker families from countries other than Syria.

Note: The demographics and vulnerabilities of the studied households differed significantly among nationality lines. For this reason, the report splits findings between Iraqi respondents and respondents from other countries such as Sudan, Ethiopia and Egypt (referred to in this dashboard as 'Other Nationality' for concision). A complete list of nationalities included in the 'Other Nationality' group can be found in the full report.



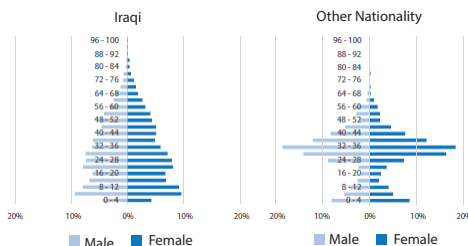
© UNHCR / M. Pena Briceno

DEMOGRAPHICS

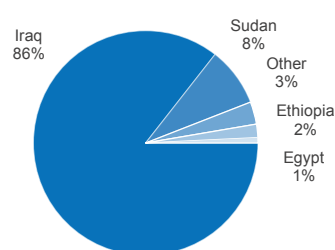
21,761 refugees and asylum-seekers from countries other than Syria were registered with UNHCR as of January 2017.

Age and gender distribution
(ProGres registration data, Dec 2016)

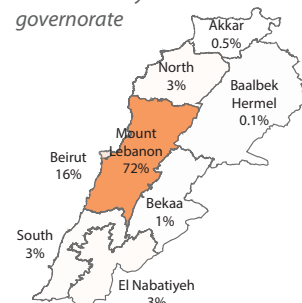
Iraqis tend to live in family units of three or more people (71%), while refugees of other nationalities are mostly single men and women (64%).



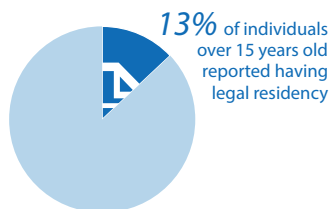
Countries of origin



Distribution by governorate



LEGAL RESIDENCY



Only 13% of individuals over 15 years old reported having legal residency. Furthermore, the share of households in which no member had a residency permit grew steeply from 30% last year to 80% this year, indicating that those holding residency last year did not renew it or new arrivals had not secured residency.

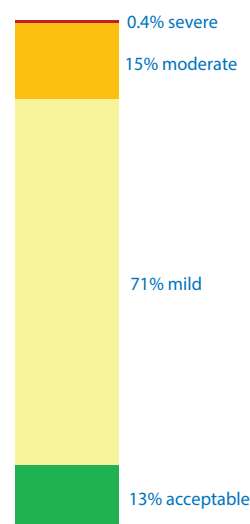
FOOD SECURITY

87% of households presented some degree of food insecurity. WFP does not provide Cash for Food assistance to refugees from countries other than Syria, and UNHCR stopped providing food assistance to this group in March 2017 due to lack of funds. While most households are eating an adequate quantity and variety of food, the coping strategies they are adopting in order to do so are concerning.

66% of households reduced expenditure on health and education to cope with lack of food or money to buy it. 49% spent their savings, 42% bought food on credit and 35% sold household goods.

Respondents from **200** households said they did not eat for at least one day in the last seven

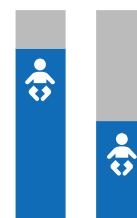
Food Security Index



BIRTH REGISTRATION

Iraqi parents were much more likely to register their child's birth than Other Nationality parents, although the questionnaire did not specify the level of registration. Without birth registration, refugees risk becoming stateless.

82% of Iraqi parents reported registering their child's birth



48% of Other Nationality parents reported registering their child's birth

SHELTER CONDITIONS

Shelter conditions remain inadequate for many. Other Nationality households were particularly at risk, with over a quarter living in shelters that were overcrowded, dangerous or in urgent need of repair (27%, compared to 12% for Iraqi households).

21 surveyed households were homeless



IRAQI



People sharing living space 4.6
Number of rooms 2.2
Number of toilets 0.8

7% in urgent need of repair
8% dangerous conditions

OTHER NATIONALITIES



People sharing living space 2.7
Number of rooms 1.3
Number of toilets 0.9

18% in urgent need of repair
18% dangerous conditions

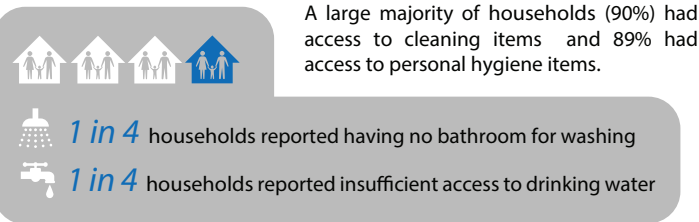
Key Findings of VARON 2017

(Vulnerability Assessment of Refugees of Other Nationalities in Lebanon)



UNHCR
The UN Refugee Agency

WATER AND SANITATION

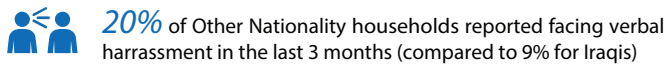


Female-headed households tended to have less access to water, with only 62% reporting having enough water for drinking and domestic use, compared to 79% of male-headed households.

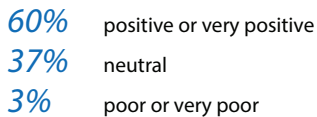
1 in 5 households with females reported no access to female hygiene items.

SOCIAL STABILITY

Refugee–host community relations were mixed and continue to be more difficult for Other Nationality refugees and asylum-seekers.



Relations with the host community according to respondents

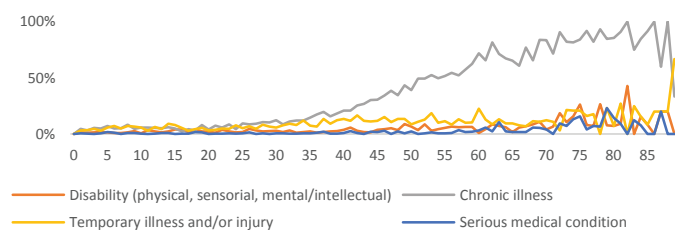


Those interacting *daily or regularly* with the host community generally enjoyed better relations: 98% of this group reported positive or very positive interactions, compared to 11% of those who interacted *rarely or never*.

SPECIFIC NEEDS

More than half (53%) of all households reported having at least one member with specific needs. There was no notable difference between men, women, Iraqi and Other Nationality households in terms of reporting specific needs.

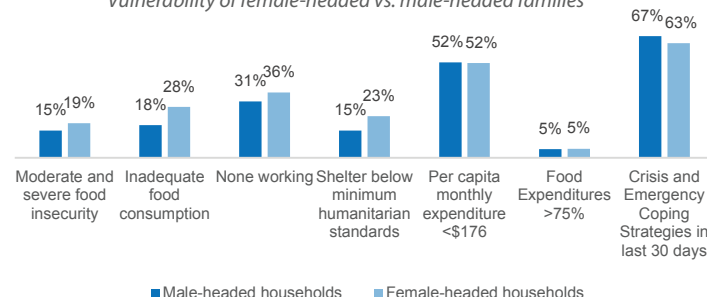
Percentage of individuals suffering from specific needs by age



GENDER DIMENSIONS OF VULNERABILITY

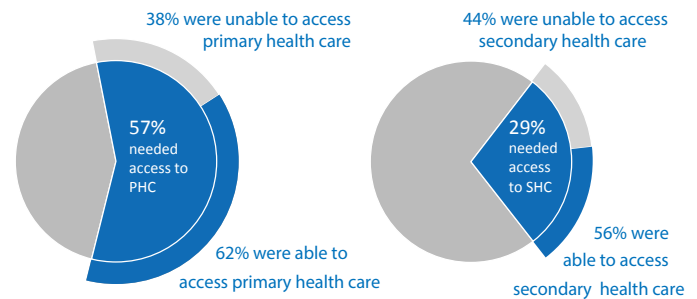
Female-headed households fared worse than their male counterparts on many indicators of vulnerability, although male-headed households had greater recourse to crisis and emergency coping strategies.

Vulnerability of female-headed vs. male-headed families



HEALTH CARE

Access to primary and secondary health care

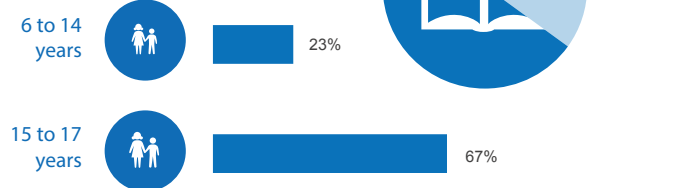


The most reported reason for not being able to access primary and secondary health care was cost of treatment or medication.

EDUCATION

School attendance remains very poor, particularly among 15 to 17 year olds.

School non-attendance by age group



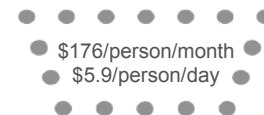
School attendance improved since 2016, when the VARON found 36% of primary and 73% of secondary school age children were out of school.

INCOME AND EXPENDITURE



average reported expenditure per person per month

Minimum Expenditure Basket (MEB)¹
(poverty line)



living above the MEB **48%** living below the MEB **52%**

26% of expenses went towards food
56% borrowed money in last 3 months
\$297 average per capita debt
\$135 average per capita income²

36% of expenses went towards food
76% borrowed money in last 3 months
\$250 average per capita debt
\$35 average per capita income²

¹ Expenditure 'baskets' serve as benchmarks to estimate what vulnerable families would require to purchase goods and services from local markets in order to meet basic needs at either survival or minimum levels. The MEB for non-Syrian refugees and asylum-seekers is US\$ 176 per person per month.

² Based on the question "In the last 30 days, what was the total income of all the household members".