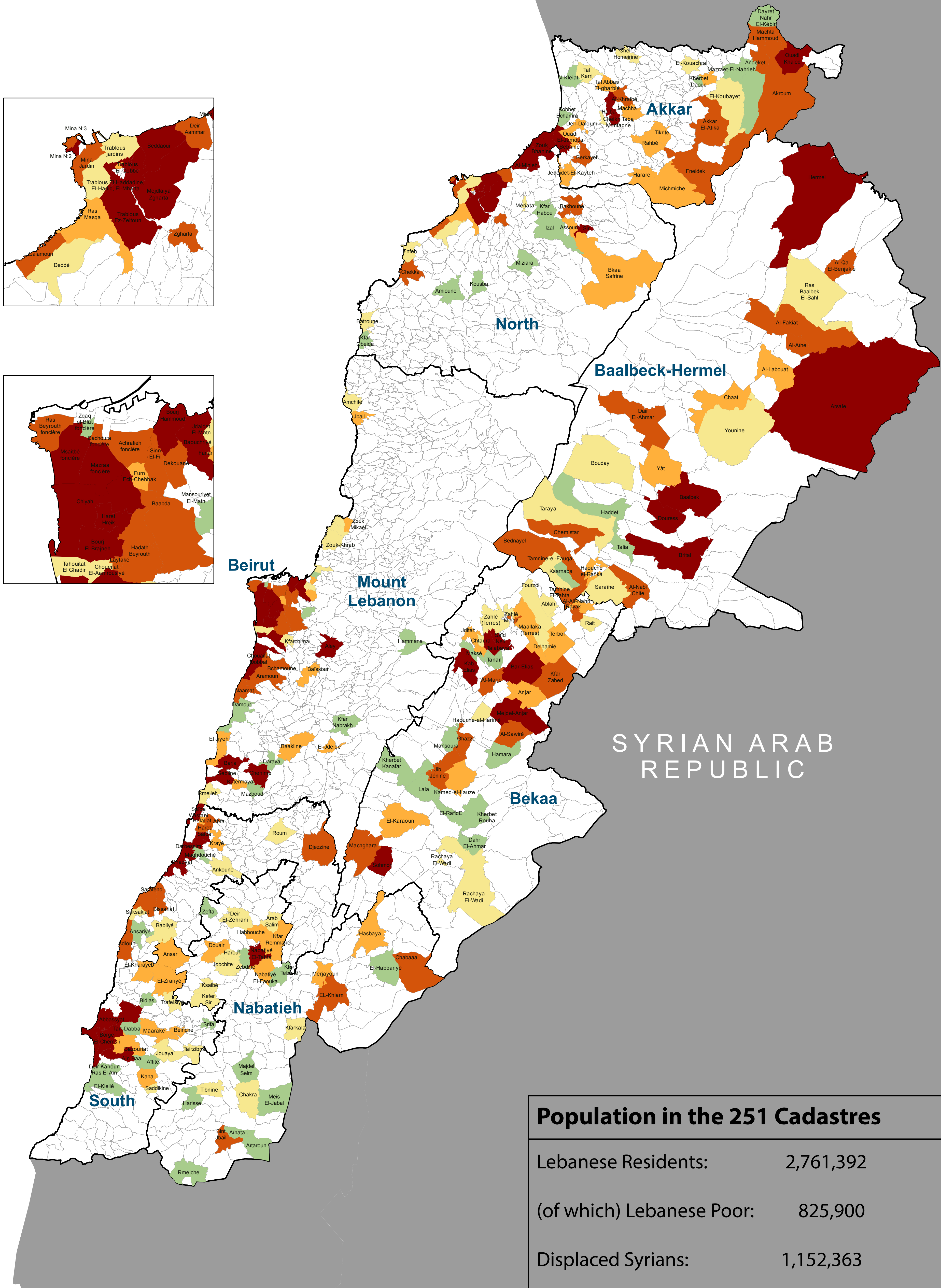


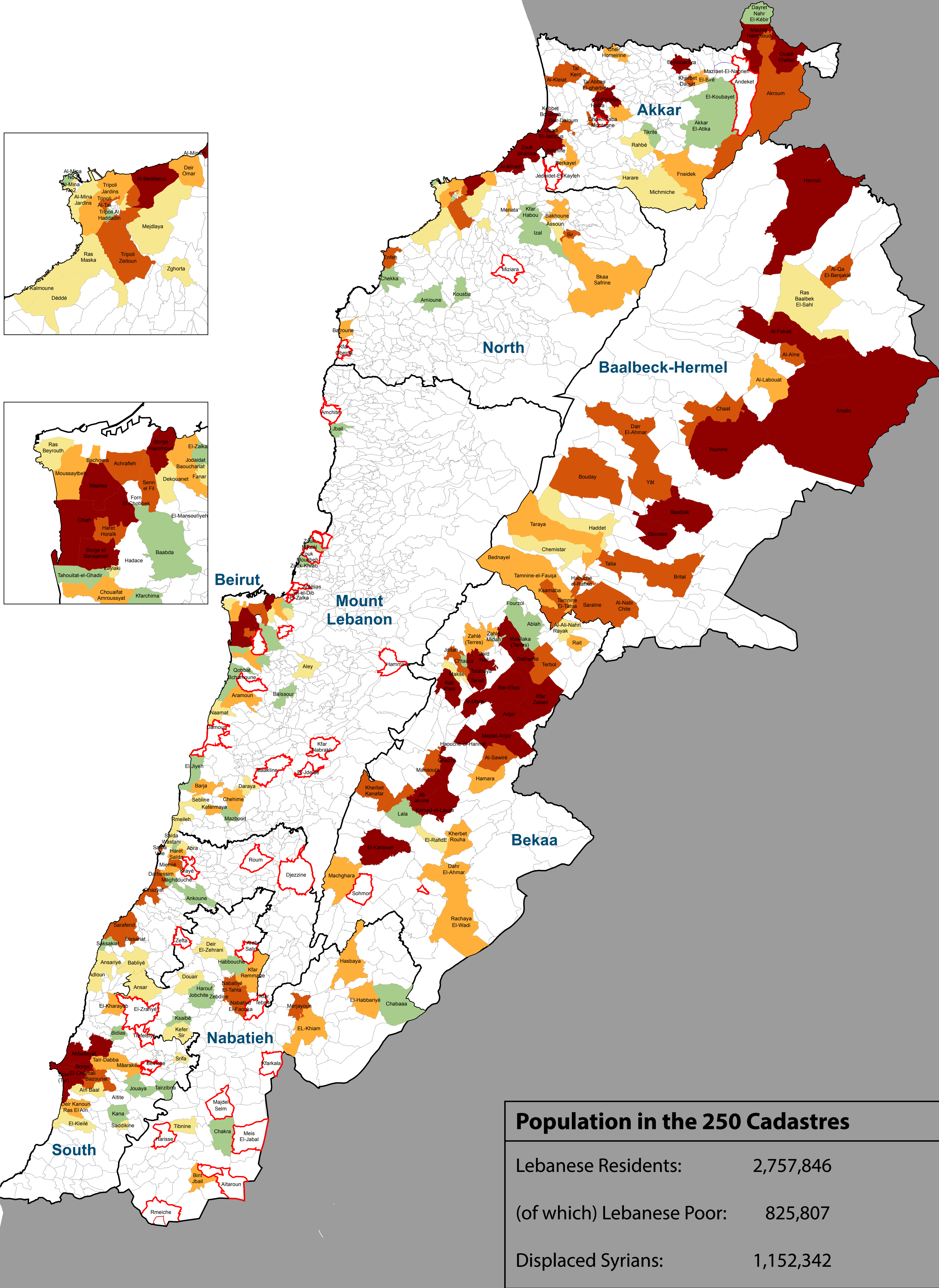
Convergence Maps - August 2015



Most Vulnerable Cadastres in Lebanon (251 cadastres) March 2015



ActivityInfo - Accumulated Report Count per Cadastre August 2015



Calculation of the Most Vulnerable Localities is based on the following datasets:
1 - Multi-Deprivation Index (MDI)
2 - Lebanese population dataset
3- Displaced Syrian population figures

Map Production Date: 28 September 2015
For GIS and Mapping: hany.imam@one.un.org

VULNERABILITY by Quantile

- Most Vulnerable
- 2nd Most Vulnerable
- 3rd Most Vulnerable
- 4th Most Vulnerable
- 5th Most Vulnerable

ACTIVITY REPORTS by Quantile

- More than 1178
- 542- 1178
- 323- 541
- 195- 322
- 82 - 194

Vulnerable Cadastre With NO Significant Activities
 Neighboring Countries
 Governorate Boundaries
 Cadastre Boundaries

0 5,500 11,000 22,000 33,000 44,000 Meters

