

UNHCR PUBLIC HEALTH

2014 ANNUAL REGIONAL OVERVIEW

GREAT LAKES, CENTRAL AND WEST AFRICA



PUBLIC HEALTH

REPRODUCTIVE
HEALTH & HIV

NUTRITION &
FOOD SECURITY

WATER
SANITATION
& HYGIENE

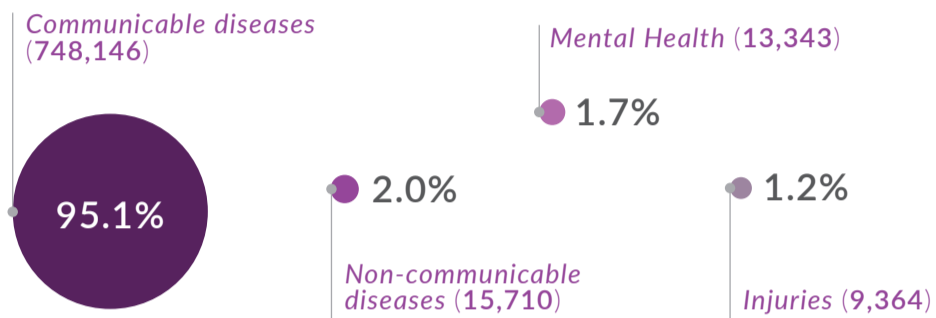
Public Health

2014 GREAT LAKES, CENTRAL AND WEST AFRICA

DISEASE PROFILE

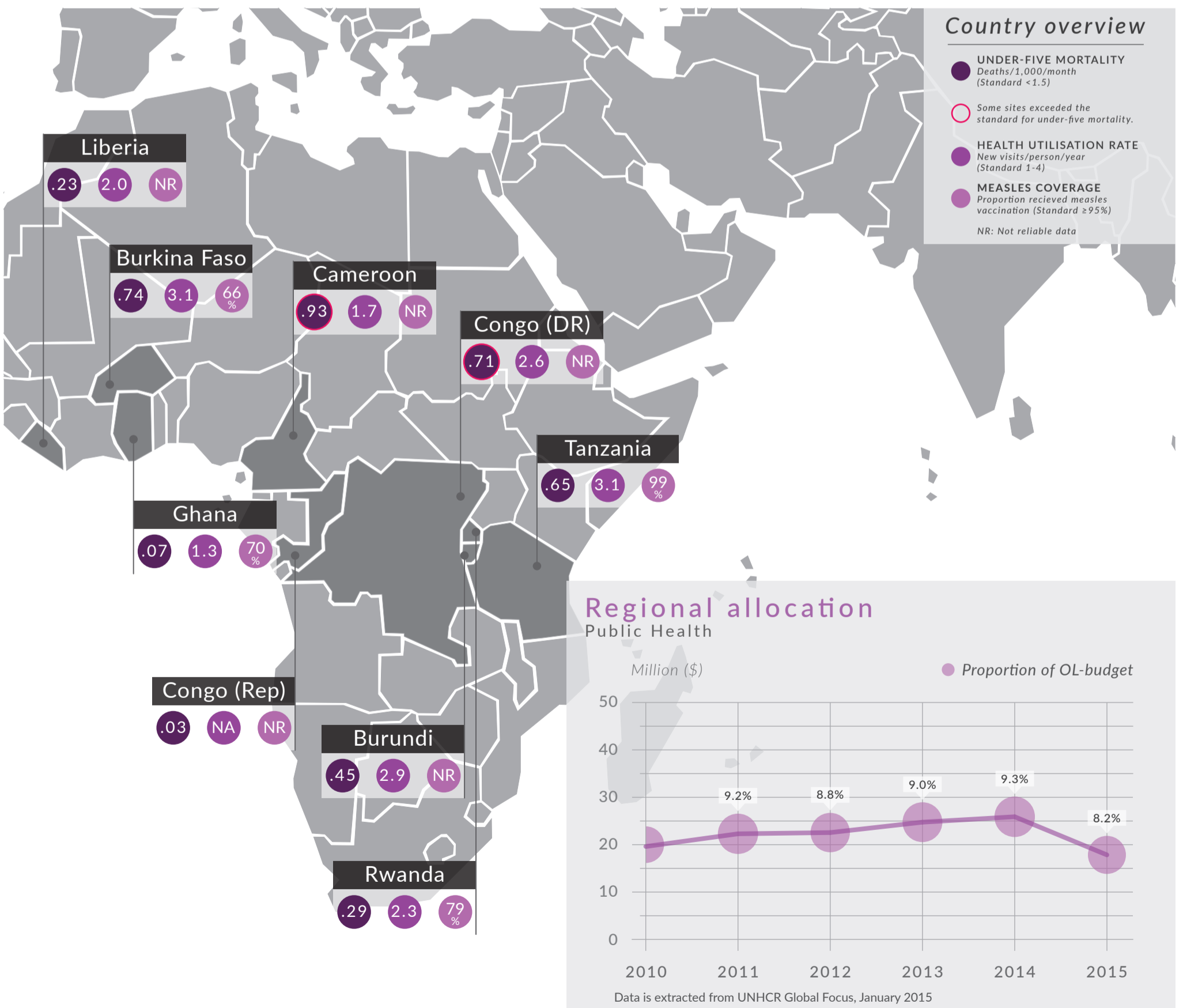
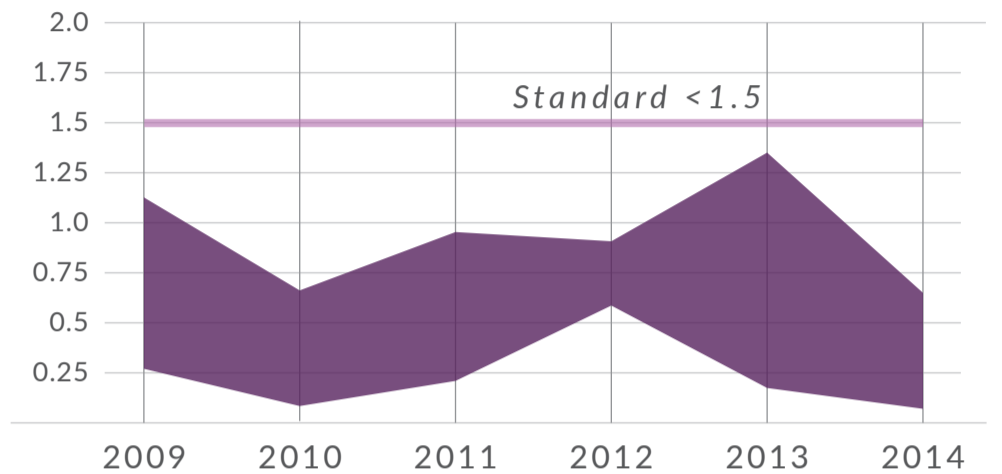
Proportion of all consultations

786,563 Total number of consultations in 9 countries
14% of global disease burden among surveyed refugees



UNDER-FIVE MORTALITY

Deaths/1,000/month (lowest-highest rates)

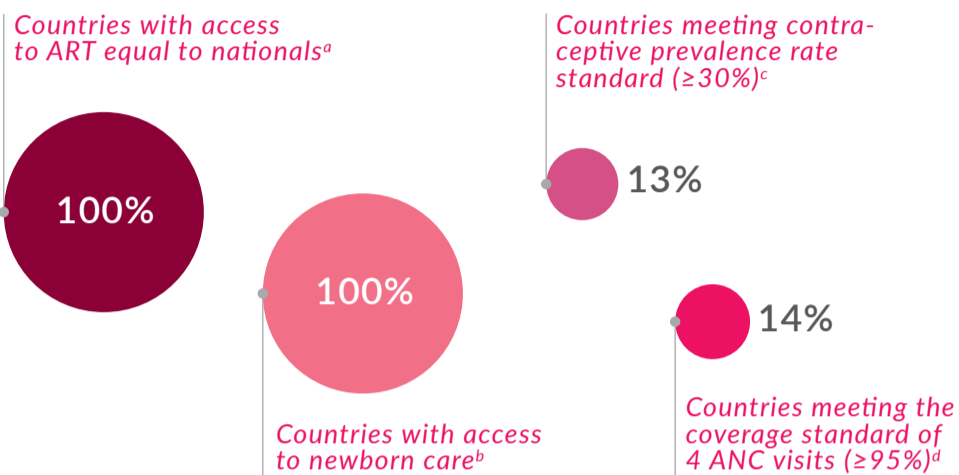


Reproductive Health & HIV

2014 GREAT LAKES, CENTRAL AND WEST AFRICA

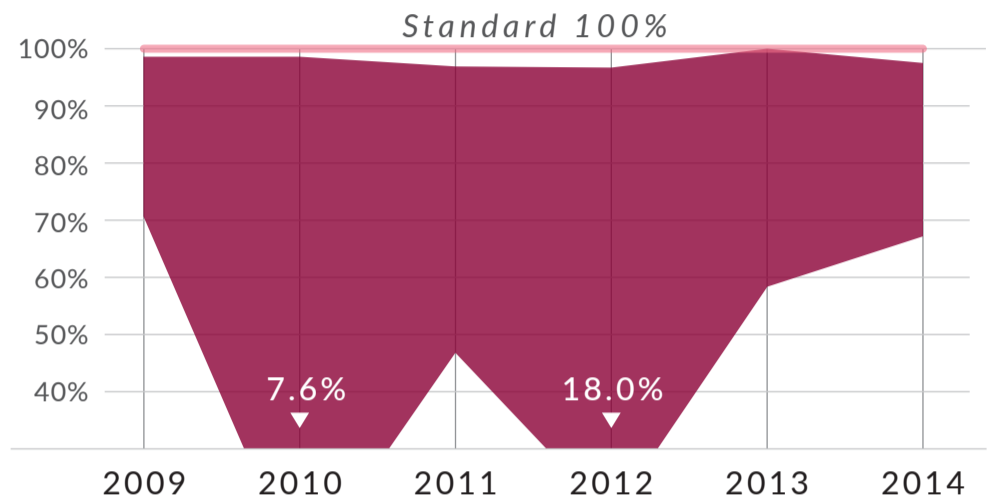
REPRODUCTIVE HEALTH & HIV PROFILE

Proportion of countries

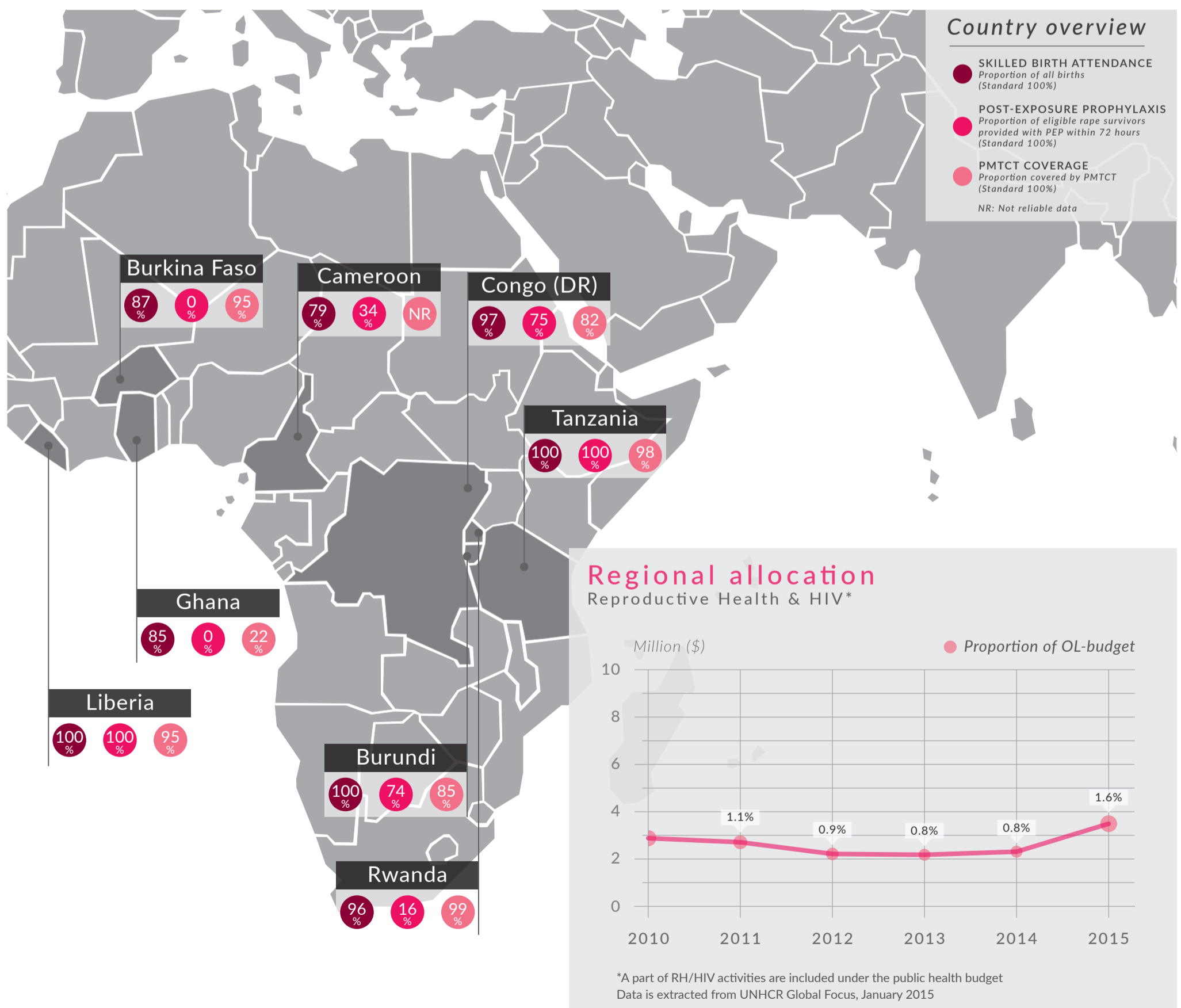


SKILLED BIRTH ATTENDANCE

Proportion of all births (lowest-highest proportions)



Number of countries included in analysis a) 16, b) 15, c) 8, d) 7

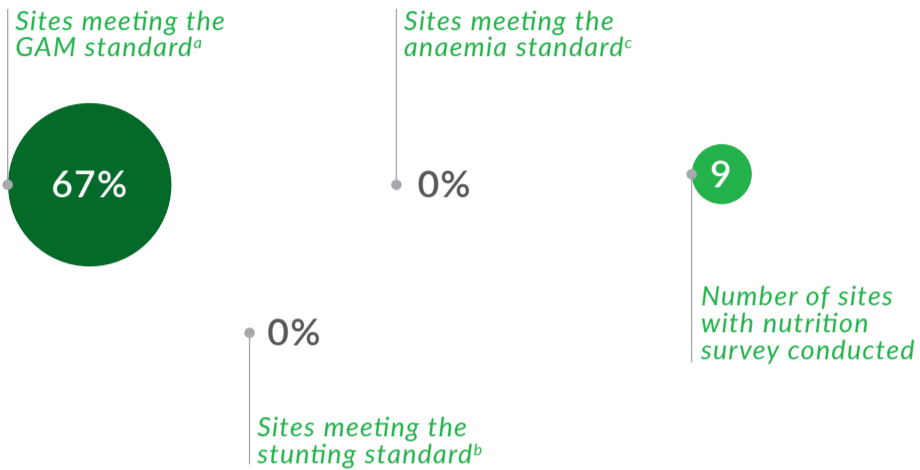


Nutrition & Food Security

2014 GREAT LAKES, CENTRAL AND WEST AFRICA

NUTRITION PROFILE

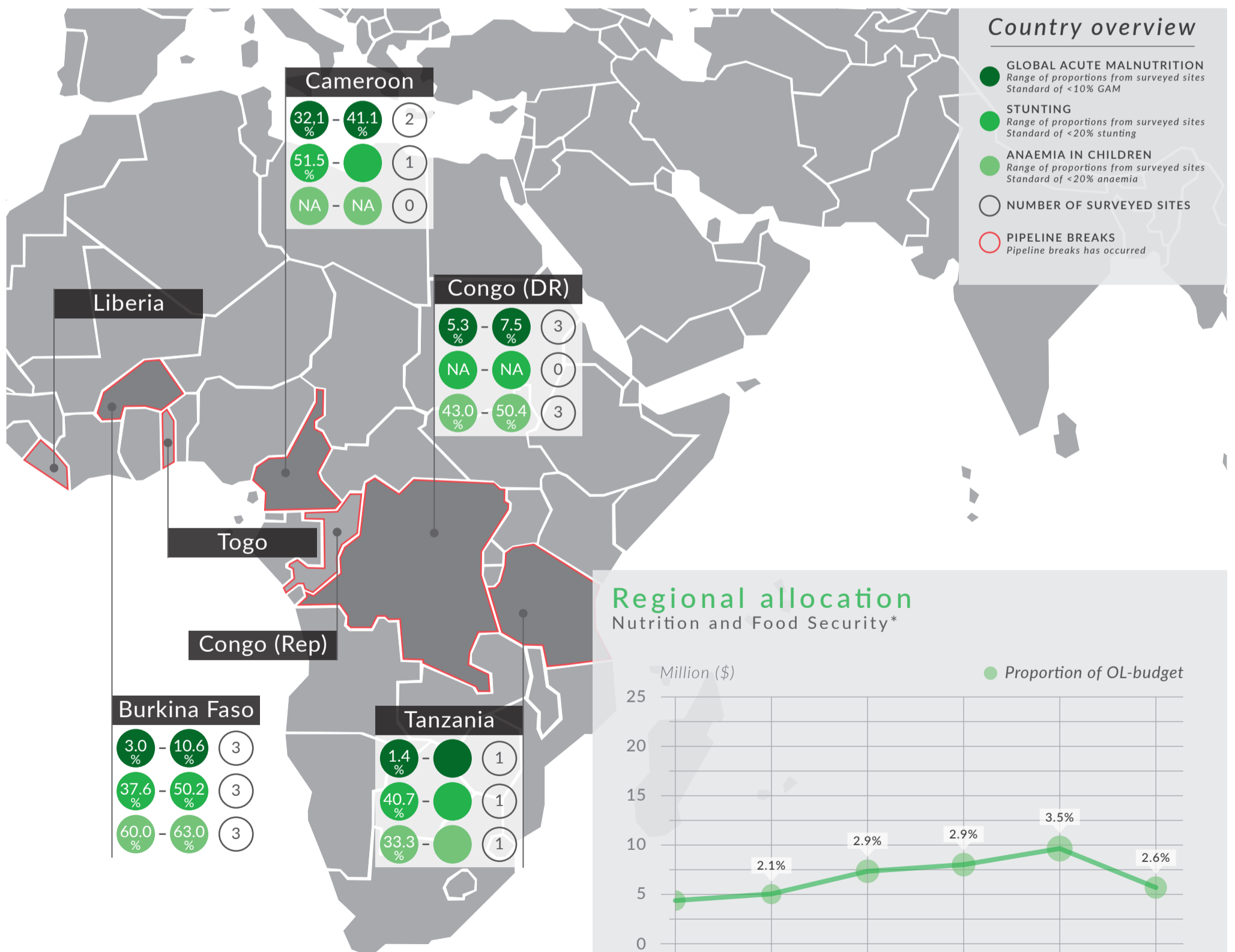
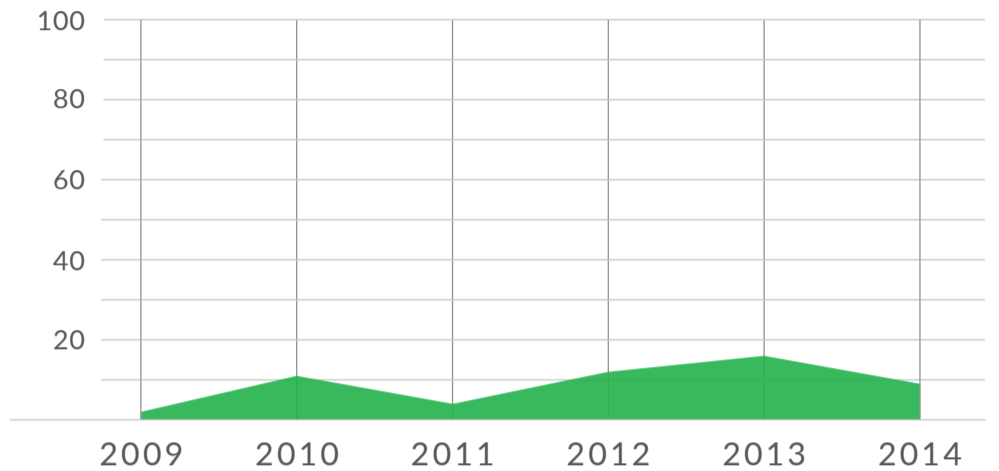
Proportion of surveyed sites



Number of sites included in analyses a) 9, b) 5, c) 7

NUTRITION SURVEY TRENDS

Number of sites with nutrition survey conducted



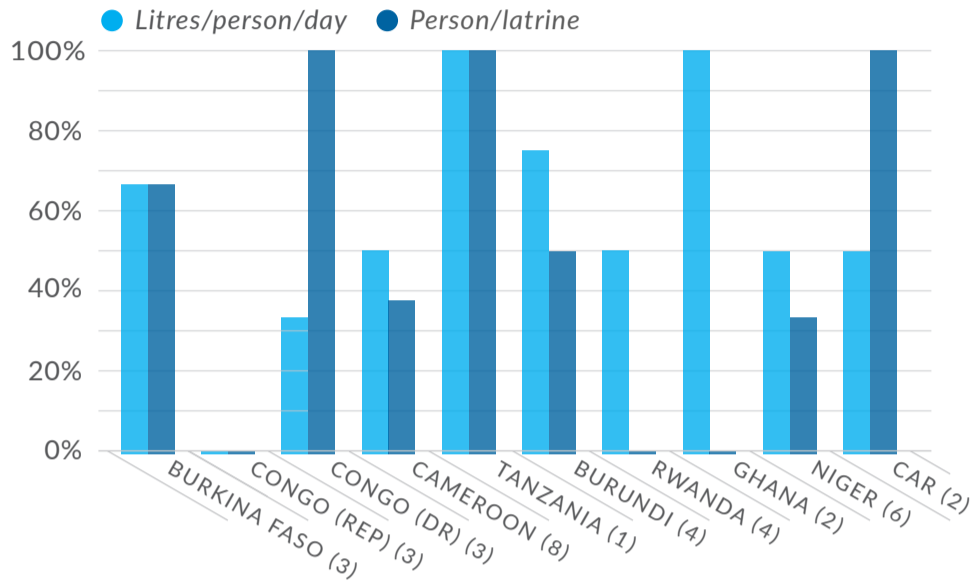
*A part of the nutrition activities are included under the public health budget
Data is extracted from UNHCR Global Focus, January 2015

Water, Sanitation & Hygiene

2014 GREAT LAKES, CENTRAL AND WEST AFRICA

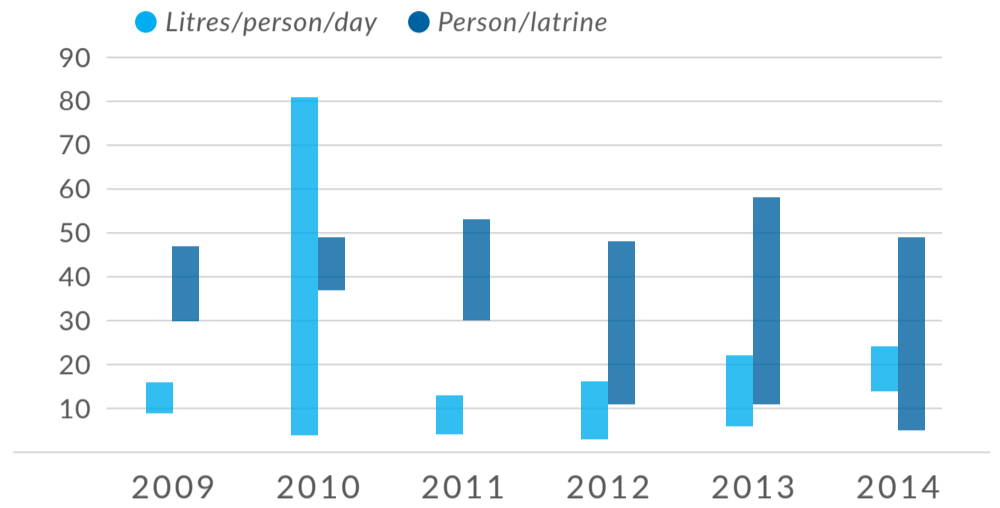
WASH PROFILE

Proportion of sites meeting the standard

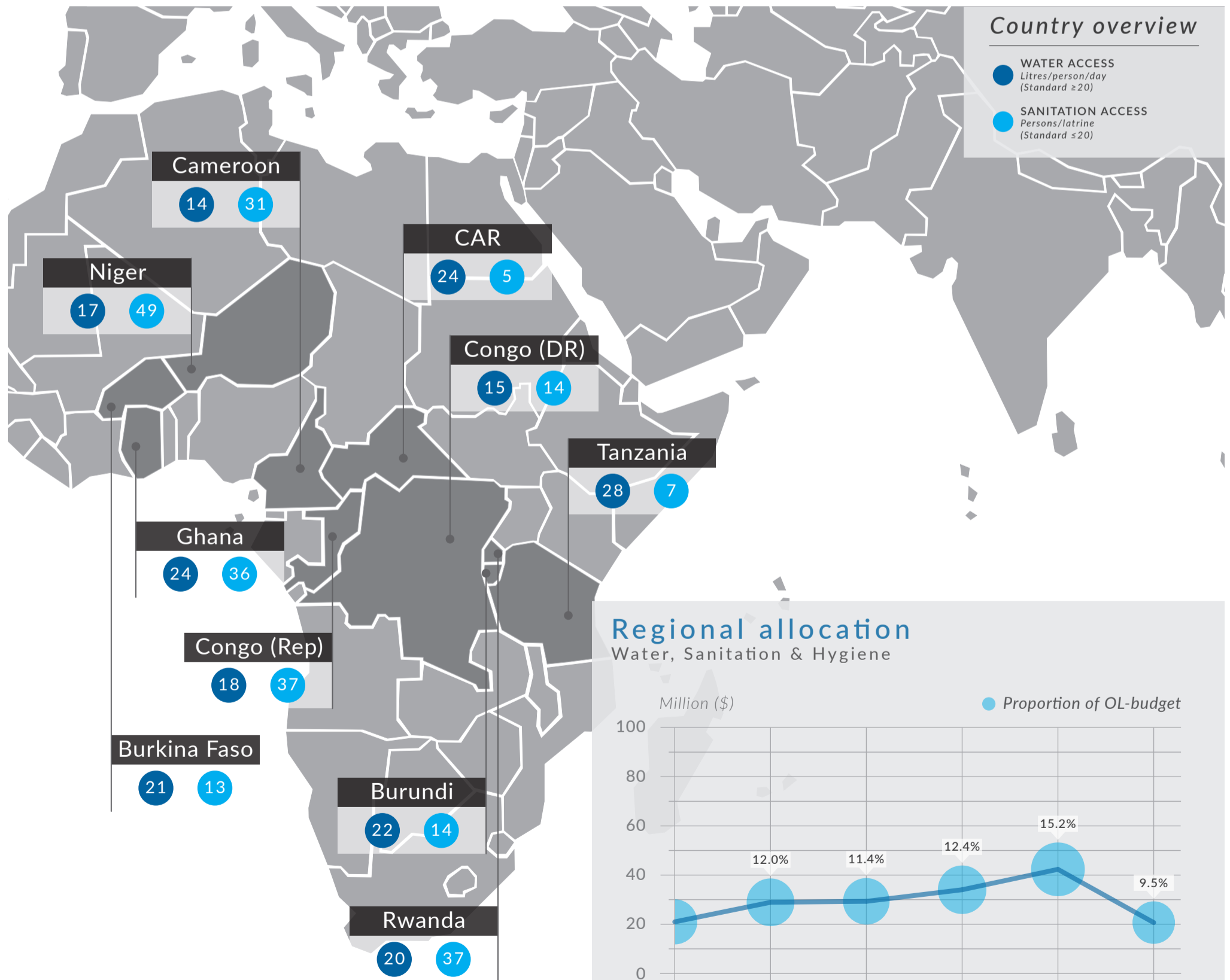


WATER & SANITATION TRENDS

Regional coverage (lowest-highest values)



The figure in brackets represent the number of sites/settlements included in analysis

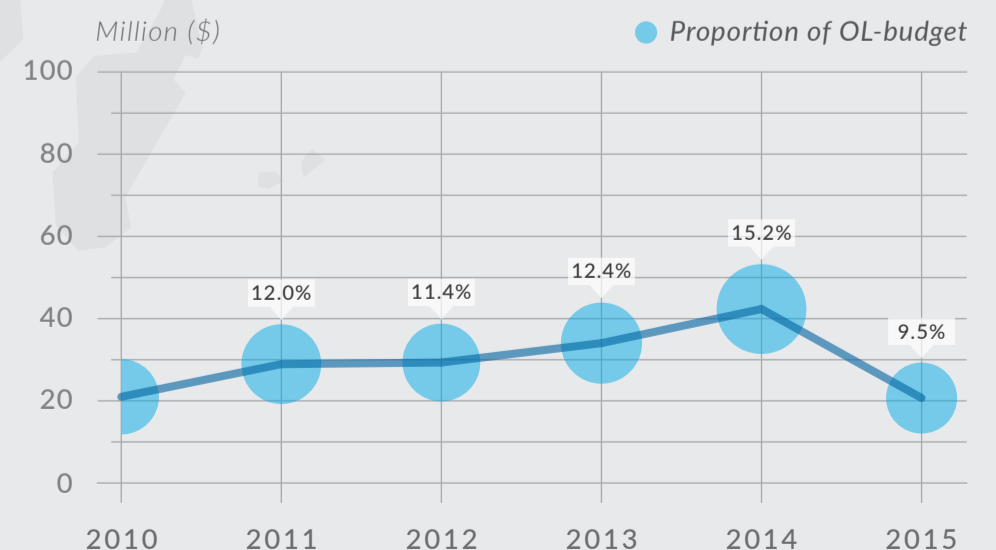


Country overview

- WATER ACCESS
Litres/person/day
(Standard ≥20)
- SANITATION ACCESS
Persons/latrine
(Standard ≤20)

Regional allocation

Water, Sanitation & Hygiene



Data is extracted from UNHCR Global Focus, January 2015



United Nations High Commissioner for Refugees
Public Health Section
Division of Programme Support and Management
Rue de Montbrillant 94
CH-1201 Geneva
Switzerland

T: +41 22 739 8433
F: +41 22 739 7344

E-mail: hqphn@unhcr.org
www.unhcr.org

Graphic design: Rasmus Wibæk Christensen, Copenhagen

The boundaries shown on the maps do not imply official endorsement or acceptance by the United Nations.

UNHCR © 2015