

**To gi pinu me´da asu/dhali/e bway
mmo gam is me´di wathin kamu
ki dar gi mo misha /e is pini `ban
dhali adi midi kali/ `batha (HIV)**



Doshi to gi pinu mo

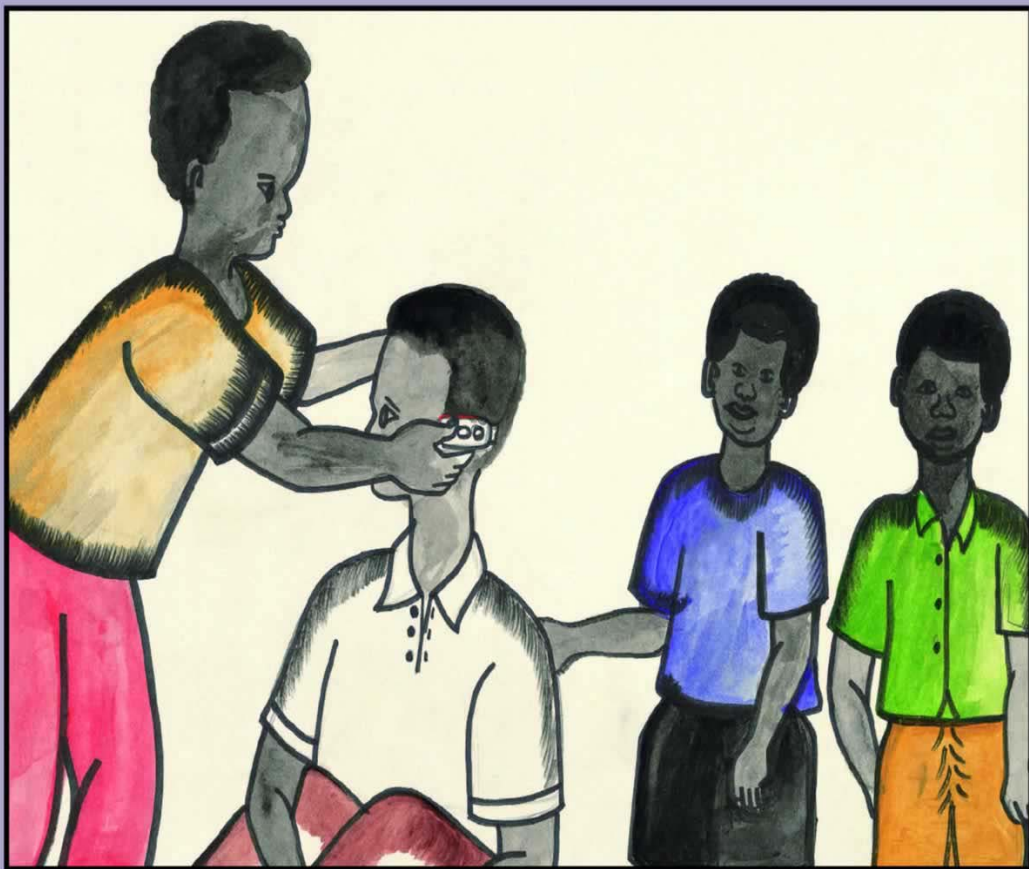


Developed and Published by AMREF - Sponsored by UNHCR



**Drinking leads to unsafe sex
Unsafe sex leads to HIV
Stop Drinking**

Doshi to gun nyithu amu'kup wala a gwapi nyak_mo



Haali/ adi midi kali/ 'bath jin yukka (HIV)



Developed and Published by AMREF - Sponsored by UNHCR



Stop Sharing Sharp Instruments. It may spread HIV

**Mmo gam is me´d inyakki iman
nyaka atu'c mii. Dhali/e bway
mmo gam `bath jin yukka HIV**



**Tayi wathin kar/e
goma a'boma pini mo**

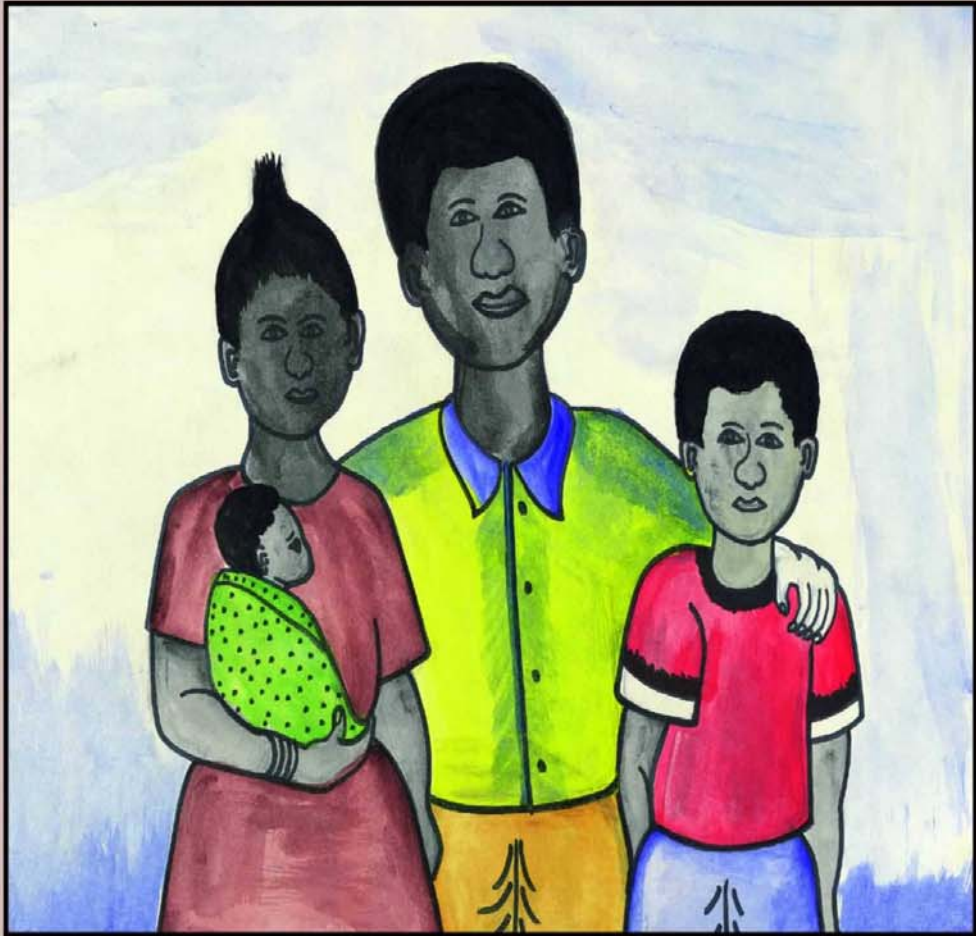


Developed and Published by AMREF - Sponsored by UNHCR



**Having Sex with many partners leads to HIV infection
Be faithful to your partner**

ibim niġ gwa_{th} ġi_n m_idi om 9rod ik ub_n ki pore mo



ingq' ibs in_go' il_go' 'p_{ath} ġi_n ġ_nkk_a HIV/AIDS



Developed and Published by AMREF and Sponsored by UNHCR



Be a responsible Father: Protect your Family from HIV/AIDS