



Humanitarian Aid
and Civil Protection



UNHCR
The UN Refugee Agency



unicef



WFP



World Health
Organization

Vulnerability Assessment Framework

Basic Overview

November 2014

What is the VAF?

The VAF defines vulnerability as:

“the risk of exposure of Syrian refugee households to harm, primarily in relation to protection threats, inability to meet basic needs, limited access basic services, and food insecurity, and the ability of the population to cope with the consequences of this harm”

There are many aspects of the VAF

It's a tool for targeting

It's a tool for analysis

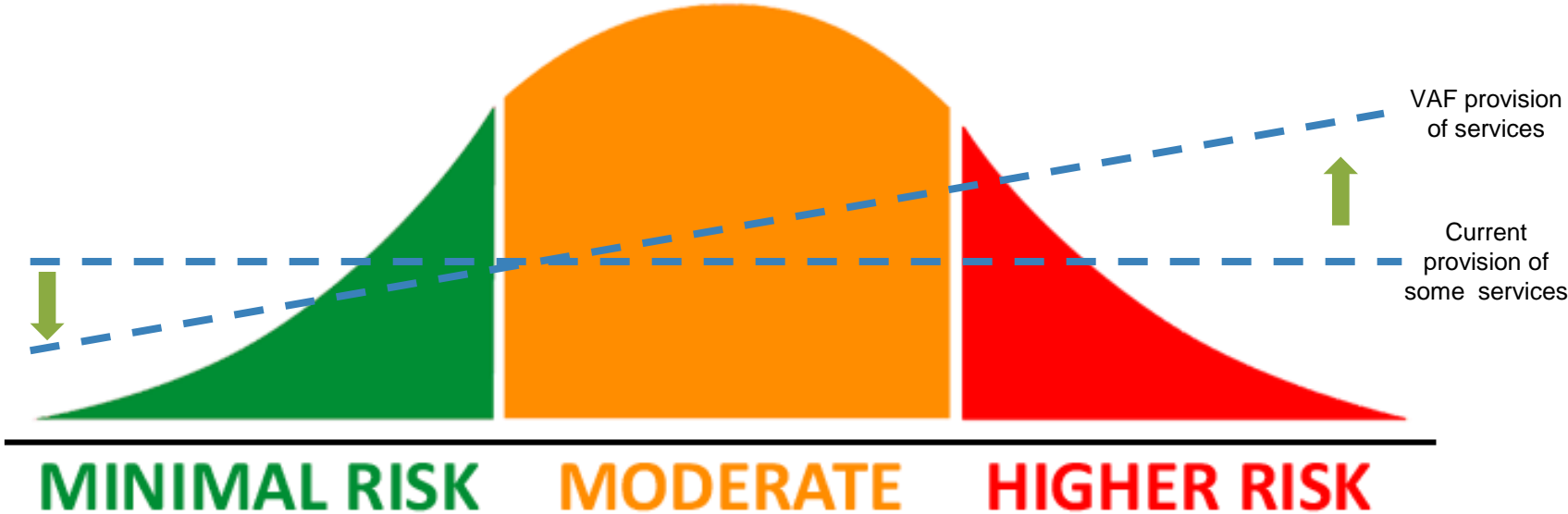
It's a tool for coordination

It's going to be great for
information sharing

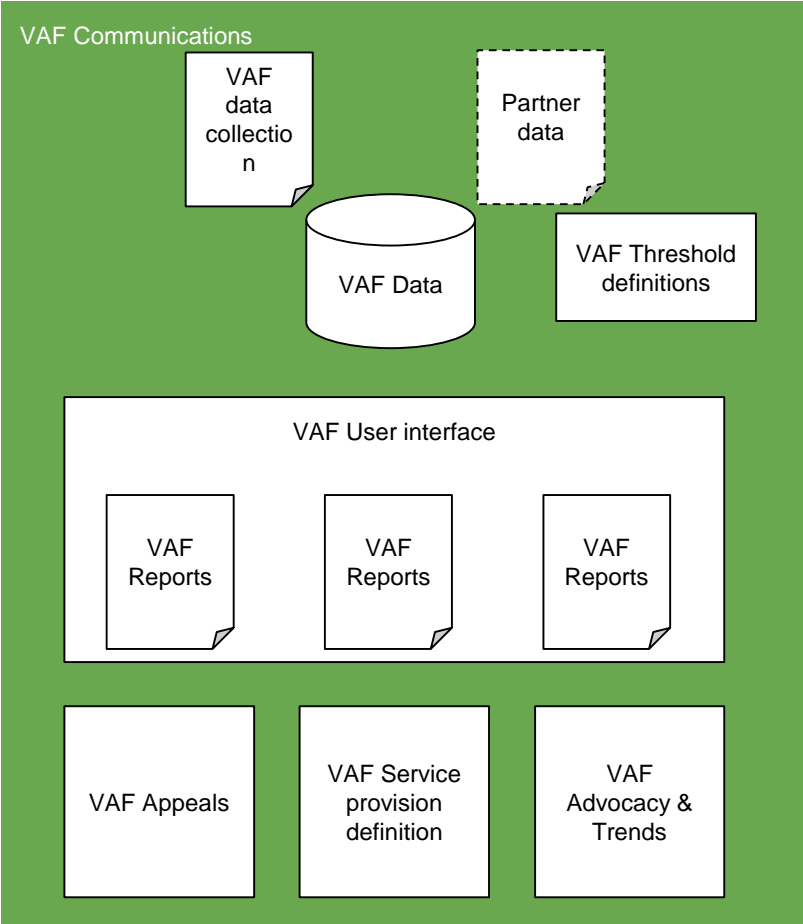
It's going to incorporate
the Welfare model

It's going to incorporate
sector-specific indices

Provision of services will go to those who need it most



VAF components



Targeting model so far

Methods being investigated

1.

Statistical regression

2.

Rules based sector indicators

3.

A combination of both

What have we done

Statistical regression:

- 700, 5000, 9000 records analysed
- Some of the characteristics that contribute to predicting expenditure
 - house crowding, the debt-to-expenditure ratio, family size, coping strategies to meet basic food needs, the saving ratio, and income per capita.
- R-squared of 60%

Sector indicators:

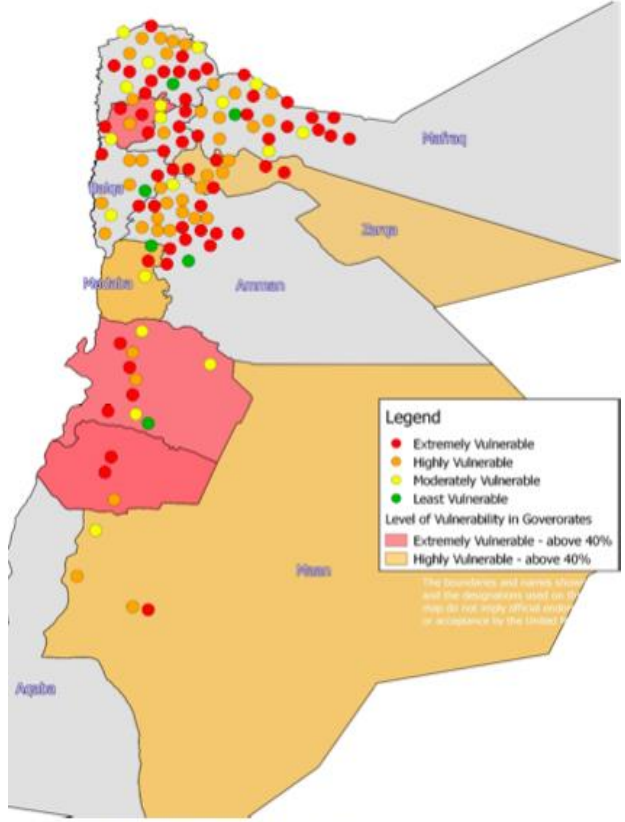
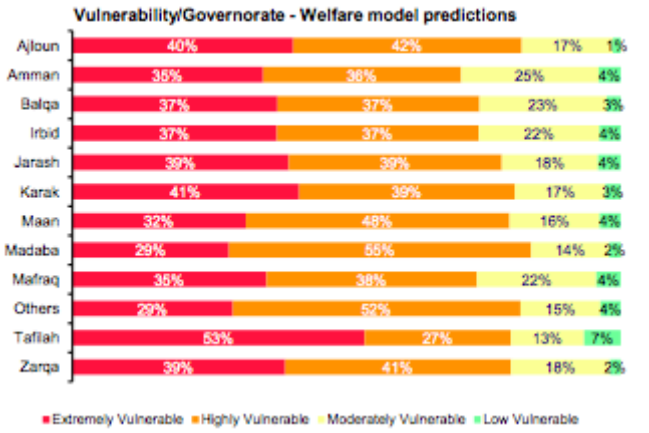
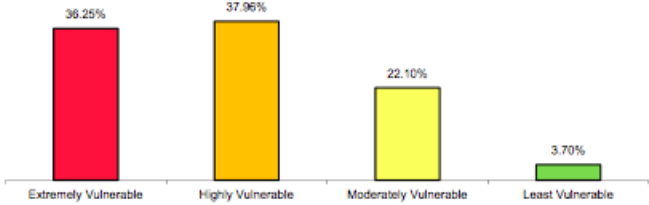
- All sectors modelled (Draft)
- Thresholds review with sector leads

Mock-up data

Vulnerability as expenditure	Reported	Predicted
01. Low (150JD+)	14.11%	15.32%
02. Moderate (70 - 150JD)	20.42%	19.22%
03. Highly (40 - 70JD)	25.08%	34.98%
04. Extremely (<40JD)	40.39%	30.48%

Source data: ProGres & VAF home visit (Interim 666 records sample)

Mock-up data

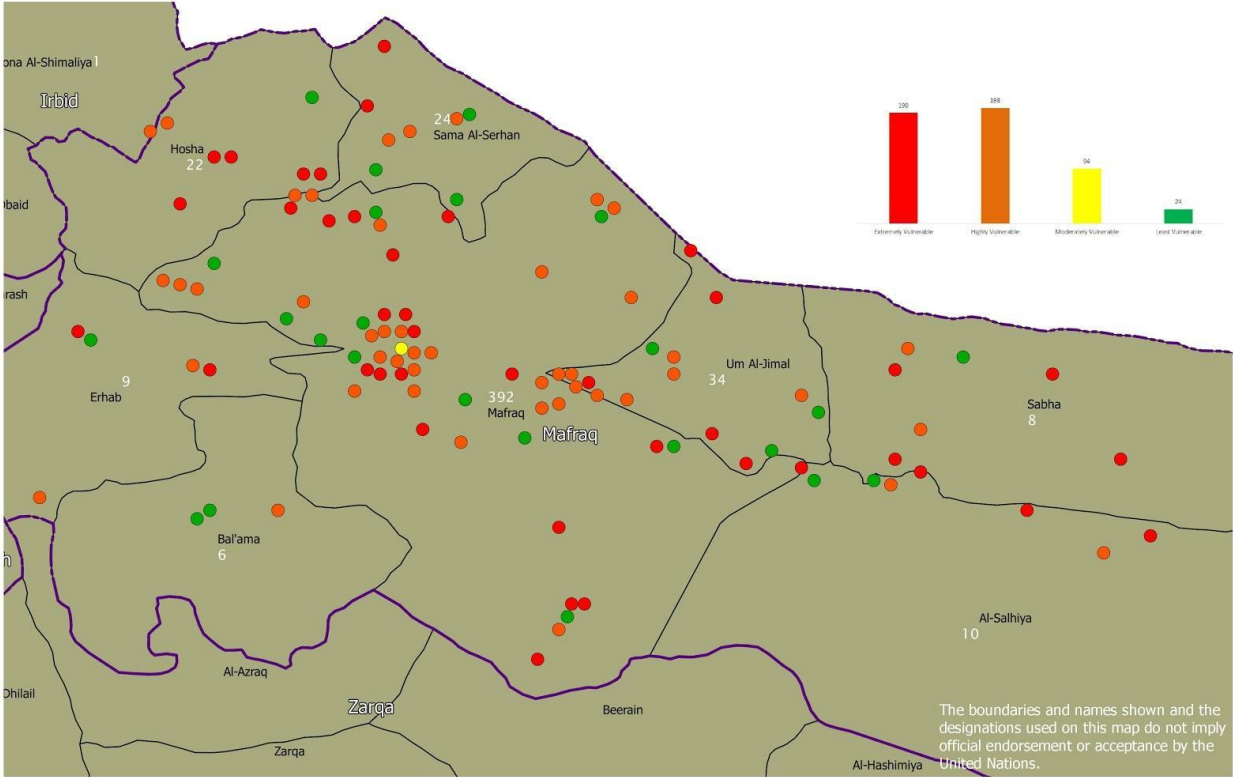


Level of Vulnerability based on Welfare model predictions - Pilot data

Source data: ProGres & VAF home visit (Interim 5,000 records sample)

Mock-up data

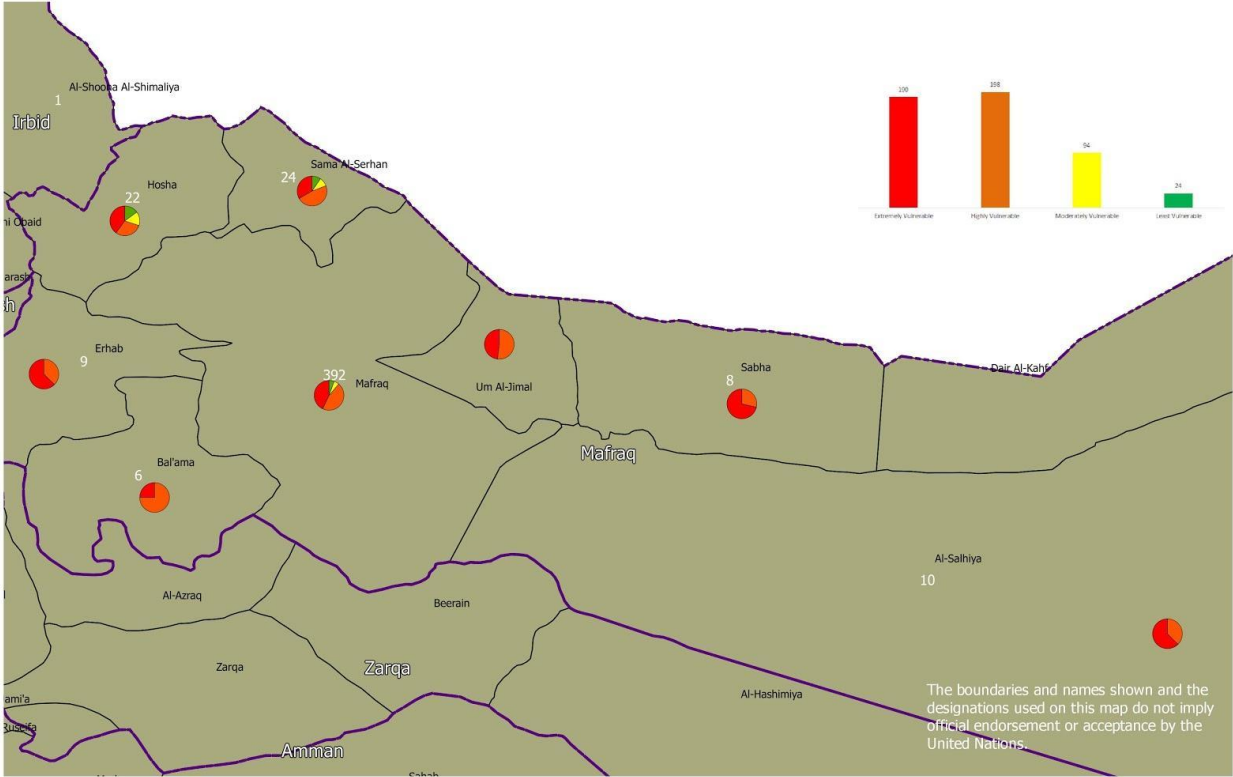
Level of Vulnerabilty - Syrian Refugees (Mafraq Governorate)



Source data: ProGres & VAF home visit (Interim 5,000 records sample)

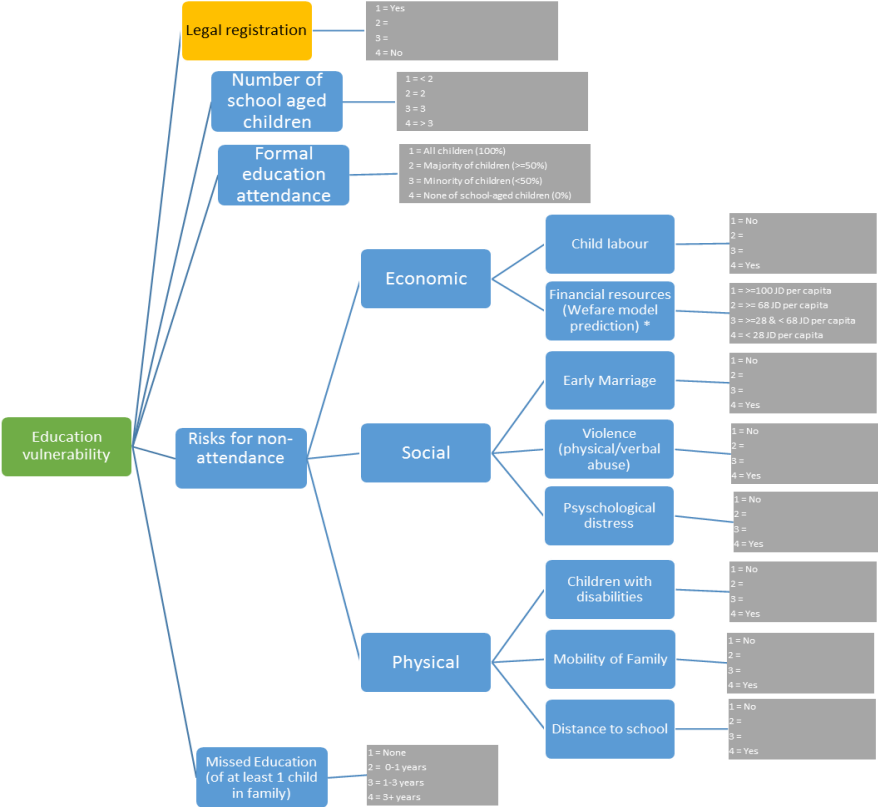
Mock-up data

Level of Vulnerability - Syrian Refugees (Mafraq Governorate)



Source data: ProGres & VAF home visit (Interim 5,000 records sample)

Education Vulnerability (Jordan)



Combined indicators

Example of a potential HH scorecard:

Welfare	2.5
Economic	3
Education	1
Food	4
Health	4
NFI	2
Protection	2
Shelter	1
WASH	3

HH avg.	Vs. HH	Last visit	Vs. Last
2	—	1.75	↑
3	—	2	↑
1	—	1	—
2	↑	1	↓
2	↑	1	↓
2	—	2	—
1	↑	1	↑
3	↓	3	↓
3	—	3	—

What could it look like

Vulnerability Assessment Framework
User interface design

SCENARIO: MOCK UP LAYOUT DESIGN

RAIS

http://rais.com/vaf

Vulnerability Assessment Framework Management Console

UNHCR The UN Refugee Agency

Welcome Kate Profile Sign out

Sector selector Organisation logo

Main nav bar: Research Coordination Home visits Targeting Statistics Management Household

Function operators: Clear / New, Save research, Save as home visit, Save as targeting, Share with..., Publish, Revoke, Export XLS, Export PDF, Delete

Clickable map: Query builder - Map view, Beneficiaries: 423,245, Select sector (Welfare, Cash, Food, Health, Education, WASH, Shelter, Protection)

Summary charts with live update: Vulnerability filters, Vulnerability category (55%, 30%), TBC, Welfare

Household search: Search for household: Household ID

Table view with live update: Household ID, Governorate, Cash security, Food security, Crowd index, Health, WASH, Shelter

Summary results:

Sector	Score	Geo	Time
Cash	4	1	1
Food	2	2	2
Health	3	3	1

Bio filters, Geo filters, Panel 4

User settings, Live filters, Live feedback, Filter blades

Questions