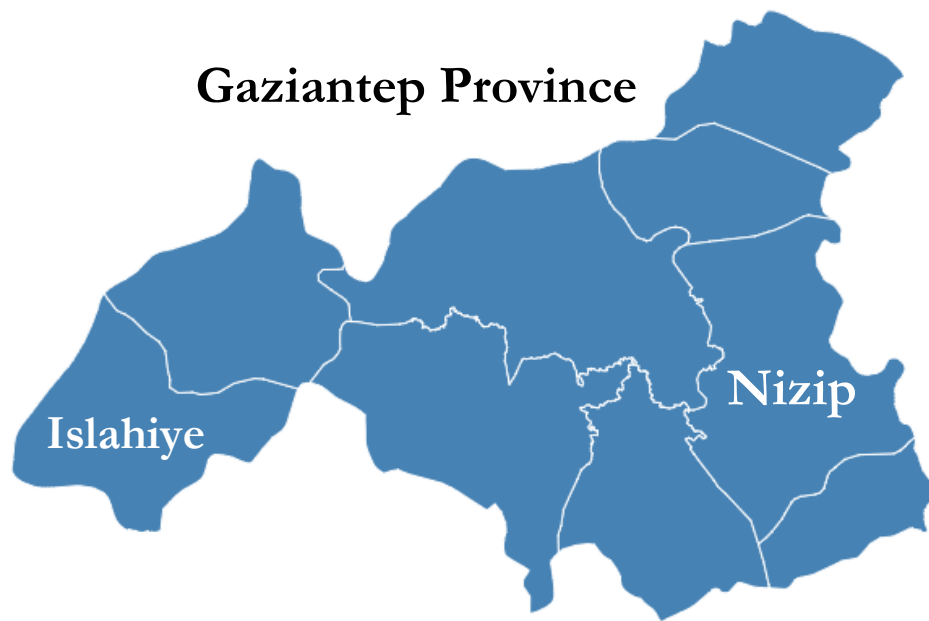




October 2017

Shelter & WASH Assessment Report

Turkey – Gaziantep (Islahiye & Nizip districts)



**BY:
CARE TURKEY TEAM**

Contents

I. Background	2
II. Objective	2
III. Methodology	3
IV. Executive Summary.....	3
V. Detailed findings	5
A. Legal status of household members.....	5
B. ESSN Assistance	5
C. Basic information about the Household.....	6
D. Health status of household's members	7
E. Source of income of household	7
F. Shelter condition.....	8
G. Detailed conditions of the occupied facility	11
H. Water and Sanitation.....	12
VI. Discussions and Recommendations.....	15

I. Background

Turkey hosts the world's largest number of refugees, with more than 3.1 million Syrian refugees registered as of October 2017 and over 250,500 refugees of other origins. Most live outside camps (>90%), struggling to earn enough to meet basic needs. Assessments conducted by CARE and IOM show that most refugees in Southeast Turkey live in inadequate structures, with 60% in shared accommodation and 10% in inadequate shelter (such as informal tented settlements, unfinished buildings, barns, shops, factories). Others live with relatives and friends, straining the already overstretched resources of host families. Refugees are concentrated in densely populated urban areas and informally developed zones, where public services and infrastructure are often inadequate. In high-density urban and isolated rural areas, CARE's field teams documented acute gaps in basic services, such as limited shelter, livelihood opportunities, and protection services.

With secured funds from BPRM and LDS, CARE will address poor conditions in shelters and the built environment focusing on Gaziantep and Kilis provinces of Southeast Turkey. This project will take elements and lessons learned from its previous projects and from CARE experiences from different relevant contexts. In this sense, CARE will apply its One Neighborhood Approach in which it concentrates upgrades on a neighborhood and street basis, in order to create tangible benefits and show beneficiaries a noticeable improvement as a result of the project. The project aims to reduce the risk of protection threats and improve safety, dignity and privacy for 7,500 vulnerable refugees and host community members as a result of shelter rehabilitation intervention and building upgrades. Registration for this project was through household visit by the CARE team.

Below are types of rehabilitation intervention that CARE will provide through this intervention.

1. Doors
2. Windows
3. Ceiling and roof
4. Walls
5. Connection to electricity
6. Electrical circuit
7. Lighting
8. Sanitation
9. Kitchen
10. Hygiene

Building upgrades;

CARE will also identify whole apartment buildings in need of upgrades to common areas (entrances, stairways, gates) and spaces between buildings (alleyways, sidewalks, and public gathering spaces). CARE and partner will survey each building using a standard checklist.

II. Objective

The overall purpose of this household shelter assessment was to define the most vulnerable refugees who are at risk of protection threats and to support improved safety, dignity and privacy for their conditions, while also providing a better understanding of their shelter needs, challenges, as well as capturing any suggestions or recommendations from the refugee community.

III. Methodology

This report presents the results for two different geographical areas in Gaziantep (Nizip and Islahiye). Data was collected through household interviews with refugee men and women based on a structured questionnaire with questions, asked only after informed consent was given by the interviewees.

Data was collected at household level by 6 enumerators (three females and three males). The main data collection period lasted 38 days.

510 individuals were interviewed which included 58 Females (11%) and 452 Males (89%). Size of HH is 6.5, Total number of households' members is 3,389.

IV. Executive Summary

Key findings for this assessment are summarized below in relation to each main topic. Further details on each finding can be found in the body of the report under the detailed findings section

In terms of **the proportion of people registered under temporary protection**, 87% of people stated that they are registered under temporary protection.

Regarding to **people who did not receive support under ESSN¹**, 62% of respondents stated that they have not received receive ESSN support.

It seems that casual labor is the main source of income of household over the past three months as 68% of respondents stated. Humanitarian aid or ESSN assistance came in second t 38% as the main source of HH income. 17% of respondents said: "No income" over the past three months.

The majority 72% of respondents stated that they have only one member working in the household, while 14% of respondents said:" No one work in the household". 11% of respondents mentioned that they have two working members.

The vast majority of refugees are living in houses or apartments 92%, 6% in mud houses, 1% in prefabricated houses, and 1% in shops, barn or one room. The plan for those people who are living in very bad situation shelters (i.e. prefabricated houses, shops, barn or one room) is to help them in renting houses with good conditions.

As for the **type of damage**, 63% of shelters have minor damage and 37% partial damage.

Almost all the surveyed houses **are repairable** 98%; except some houses 2%. For those unrepairable houses, some of them are barns or shops, others are very old and/or damaged houses and cannot be repaired.

It seems that the vast majority of households **do not have any document to prove their current ownership/tenancy status of the shelter**, as 95% of respondents stated.

Main **damages to shelters** in both Nizip and Islahiye consists of significant wall damage, missing roofs or significant damage to roofing, as well as shelters with significant damage to structure and floors.

¹ Emergency Social Safety Net

In terms of **condition of occupied facility**, 53% of families are living in old buildings, 30% in damaged buildings, 12% in new buildings and 4% are living in unfinished, barns or shops.

Regarding to problems with shelter **doors**, most shelters (82%) have broken doors e.g. no handle, does not close or damaged, 58% have internal doors with no lock, 26% not all internal doors are existed and 9% have no lock for the external door.

The main two issues in the surveyed houses' **windows** were broken glass (56%) and cracked around side of windows (49%). While 16% (83/510) of houses has no windows.

As for the **walls and ceiling** in the shelters, 58% have cracked and damaged ceilings, 68% have cracked and damaged walls, with only 18% in good condition.

It seems almost half of surveyed households have similar concerns about the color of water they use, as 49% of respondents stated, while 36% of respondents stated that the "water has a bad taste". 40% of respondents reported that their water is of good quality.

97% of respondents stated that they are using private tap (household tap) for drinking and cooking purposes, where some families 2% mentioned that they are purchasing water for drinking, and two families stated that are getting the water from shared taps amongst other families.

It seems that they are no issue in the **water source** of surveyed households as 96% of respondents stated that the water sources are working all the time, only one respondent said: "it is broken, not working".

When it comes to the **type of bathing facilities** that the households' members use, 61% of respondents stated they are using private bath at their houses, while 31% of respondents mentioned to use living space (with bucket) as a bath. 8% of respondents said: "we are using shared bath with other families".

CARE's enumerators prioritized the first five main concerns with sanitation in the surveyed houses. First, toilets are not hygienic (53%), Toilets are not providing enough privacy, came in the second (41%). The third concern was the toilets are not lockable (41%). No handwashing facility at toilet came in the fourth (39%). The fifth concern was no lighting in toilets (29%).

It should be note that the **average number of people sharing same toilet is 7**.

Almost one third 35% of respondents stated they are not able to purchase hygiene items for their house use. While 65% of respondents mentioned that they are able to purchase hygiene items.

Almost two third of respondents mentioned that they are not able to **purchase hygiene items for elderly and disabled** household's members (62%). While 38% of respondents stated they are able to purchase hygiene items for elderly and disabled.

V. Detailed findings

This shelter and WASH assessment targeted households in two districts of Gaziantep province (Islahiye and Nizip). The total number of households assessed was 510, 138 in Islahiye and 372 in Nizip.

A. Legal status of household members

1. Registered under temporary protection:

The main purpose of collecting data about registration status of households in Turkey under TP is to understand the legal status of household members, and the HH members access to basic services that are normally available to registered refugees. This will be linked directly to the family eligibility in providing basic needs support through shelter/WASH project as well as referring the case to CARE Case Management/Individual Protection Assistance project team to support the HH with TP registration.

- **Does the head of household have a Temporary Protection (TP) ID?**

It seems that the majority of head of households interviewed have been registered under temporary protection (87% - 446/510), while (13% - 64/510) of head of households are still not registered. Table 1 below shows the percentages for each district.

District	No	Yes	% of No	% of Yes
Islahiye	9	129	7%	93%
Nizip	55	317	15%	85%
Grand Total	64	446	13%	87%

Table 1: Does head of household has Temporary Protection (TP) ID?

- **Are all of your family members registered under Temporary Protection?**

When asked whether all family members of HH are registered under Temporary Protection, 22% (113/510) of families stated that not all their family members are registered, and when asked how many members in your family are not registered, we found that 468 members out of 3,389 are not registered (14%). See Figure 1.

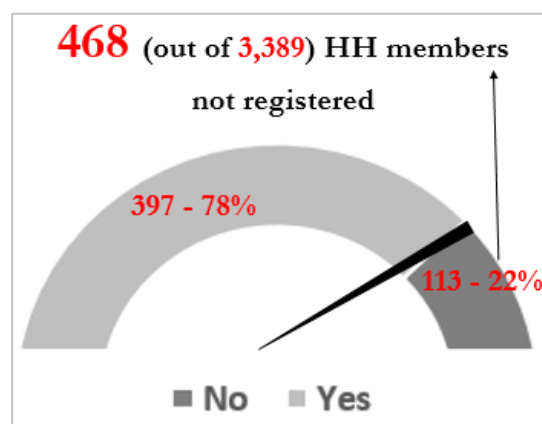


Figure 1: Are all your family members registered under Temporary Protection?

B. ESSN Assistance

The vast majority of households interviewed mentioned that they applied for ESSN² (403 out of 510 households – 79%), while 21% (107/510) did not apply.

For those who applied for ESSN (403/510), 48% (193/403) received ESSN support.

In total, 62% (317/510) of respondents stated that they did receive ESSN support. It should be noted that of the 317 who did not receive ESSN support, 210 of them applied in order to get the assistance and 107 did not apply. Table 2 shows more details.

² Emergency Social Safety Net

District	# of HH Received ESSN		% of HH Received ESSN	
	No	Yes	% of No	% of Yes
Islahiye	94	44	68%	32%
Nizip	223	149	60%	40%
Grand Total	317	193	62%	38%

Table 2: Did you receive ESSN support?

Those who did not apply for ESSN assistance mentioned the following reasons:

- 1) They do not have Temporary Protection (AFAD) ID.
- 2) Not all family members are under TP, so they did not apply.
- 3) They did not know about this kind of support.
- 4) They are registered in another province and moved to Gaziantep district or they were living in the camp and left the camp, so they can not apply as they have missing documents.

C. Basic information about the Household

1. Households composition and demographic:

Survey data shows that 51% of households' members are females (1713/3389) and 49% of them are males (1676/3389). See Table 3.

District	Male 0 - 5	Female 0 - 5	Male 6 - 18	Female 6 - 18	Male 19 - 59	Female 19 - 59	Male + 60	Female + 60
Islahiye	92	79	169	151	169	212	12	13
Nizip	322	260	442	431	440	514	30	53
Grand Total	414	339	611	582	609	726	42	66
% of Grand Total	12%	10%	18%	17%	18%	21%	1%	2%

Table 3: Households composition and demographic

2. Arrival to Turkey?

Responses around arriving to Turkey show that the majority of respondents (82%) stated that they arrived to Turkey more than 2 years. See Figure 2.

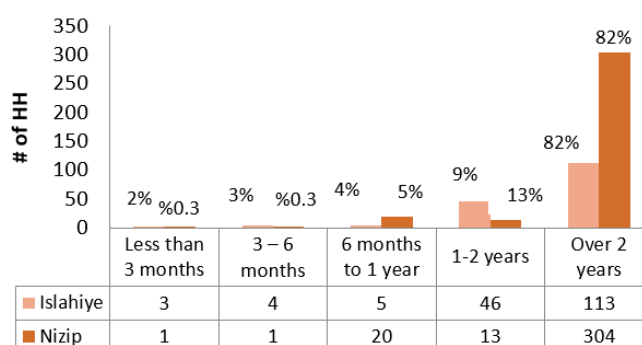


Figure 2: When did you arrive to Turkey?

3. Marital status of Head of household:

Regarding to the marital status of the Head of Household, 92% (470/510) of respondents stated that they are currently married, 6% widowed (30/510), 1% single (5/510), 0.8% divorced (4/510), and 0.2% separated (1/510). Table 2 shows you more detailed information disaggregated by district. See table 3.

District	Married	Widowed	Divorced	Single	Separated
Islahiye	93%	4%	1%	0.8%	0%
Nizip	92%	6%	1%	0.8%	0.2%
Grand Total	92%	6%	1%	0.8%	0.2%

Table 4: Marital status of Head of household

D. Health status of household's members

- Responses around pregnant or lactating women in household shows that 48% (247/510) of respondents stated that they have at least one pregnant or lactating woman in their household. See Table 4.

District	Yes	No	% of Yes	% of No
Islahiye	51	87	37%	63%
Nizip	196	174	53%	47%
Total	247	263	48%	52%

Table 4: Is there any presence of pregnant/lactating women?

- When it comes to disability in the household, 29% (149/510) of respondents stated that they have at least one disabled person in the household. See table 5.

District	Yes	No	% of Yes	% of No
Islahiye	40	98	29%	71%
Nizip	109	263	29%	71%
Total	149	361	29%	71%

Table 5: Is there any presence of disabled people (physical, mental)?

- It should be noted that that 55% (278/510) of respondents stated that they have at least one person suffering from a chronic illness in the household, with 50% of respondents in Islahiye stating the presence of chronic disease in their household. See table 6.

District	Yes	No	% of Yes	% of No
Islahiye	69	69	50%	50%
Nizip	209	163	60%	40%
Total	278	232	55%	45%

Table 6: Is there any presence of chronically ill people?

E. Source of income of household

1. Source of income of household over the past three months:

It seems that casual labor is the main source of income of household over the past three months as 68% (348/510) of respondents stated. Humanitarian aid or ESSN assistance came in second at 38% (191/510) as the main source of HH income. 17% of respondents said: "No income" over the past three months. For more detailed information, see Figure 3.

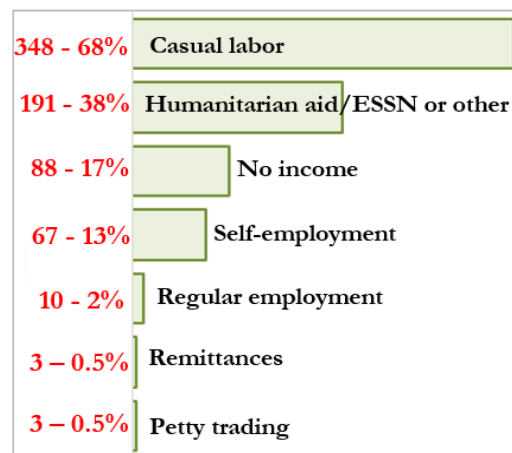
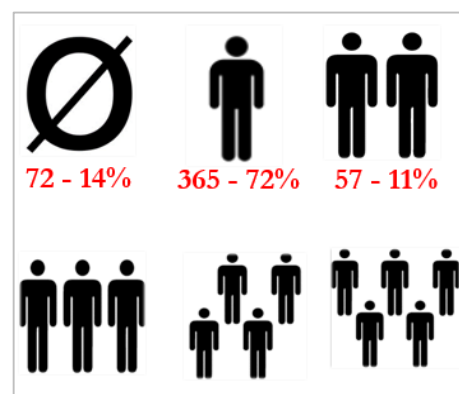


Figure 3: What are the main HH Income source over the past THREE months?

2. When we asked about the number of working members in the household:

The majority 72% (365/510) of respondents stated that they have only one member working in the household, while 14% (72/510) of respondents said: "No one work in the household". 11% (57/510) of respondents mentioned that they have two working members. Figure 4 shows you more information.



3. Rent paid per month for the property:

Most of head of households have been surveyed are paying between 200 to 400 TL per month for the property as they reported (66%; 336/510). While 29% (147/510) of respondents mentioned that they are paying less than 200 TL per month. Figure 5 shows more detailed information disaggregated by district.

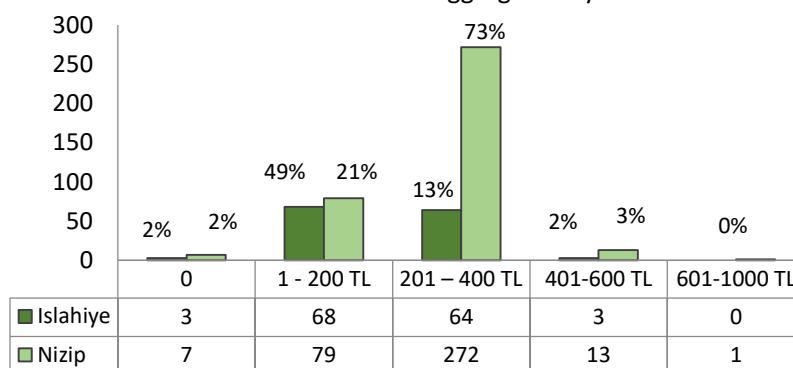


Figure 5: How much rent do you pay per month for the property?

It should be noted that 98% (502/510) of respondents stated that they are not sharing their shelter with other families, while only eight households mentioned that they are sharing the accommodation with two families.

F. Shelter condition

1. Shelter material type (external walls):

The vast majority of refugees are living in houses or apartments 92% (467/510), 6% (33/510) in mud houses, 1% (5/510) in prefabricated houses, and 1% (5/510) in shops, barn or one room. The plan for those people who are living in prefabricated houses, shops, barn or one room is to help them in renting houses with good conditions. Table 7 shows more detailed information disaggregated by district. See table 7.

District	House/apartment	Mud	Prefabricated	Shop	One room	Barn
Islahiye	115	18	4	0	0	1
Nizip	352	15	1	2	2	0
Total	467	33	5	2	2	1

Table 7: What is the shelter material type (external walls)?

2. House damage?

All visited/surveyed houses are suffering from different percentages of damage, which, for the purpose of analysis has been classified the damage to minor or partial damage. 63% (321/510) of houses have minor damaged, while 37% (189/510) are partially damaged. See Table 8.

District	Minor Damage	% Minor Damage	Partial Damage	% of Partial Damage
Islahiye	82	59%	56	41%
Nizip	239	64%	133	36%
Total	321	63%	189	37%

Table 8: Is the house partially damaged or Minor damage?

- Houses with minor damage (321 out of 510):**

For those houses with minor damage, CARE data collection team observed that 78% (251/321) of minor damaged houses has roof with moderate damage (10% - 30% damaged), 65% (208/321) have walls with moderate damage, 28% (91/321) have floor with moderate damage and 22% (70/321) have structure with moderate damage. See Figure 6.

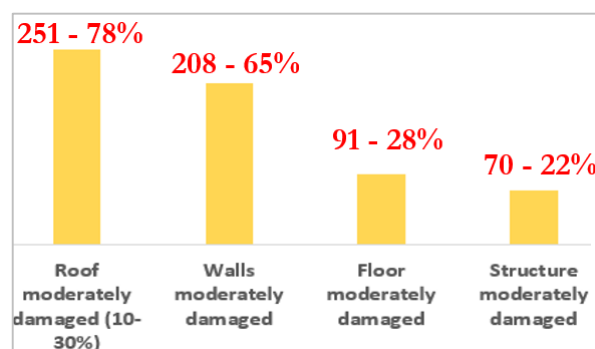


Figure 5: Problems in houses with minor damage

- Houses with partial damage (189 out of 510):**

CARE data collection team observed that 93% (173/189) of partially damaged houses have walls with significant damage, 91% (170/189) have roof missing or with significant damage (50% - 75% damaged), 54% (102/189) have structure with significant damage and 43% (81/189) have floor with significant damage. See Figure 7.

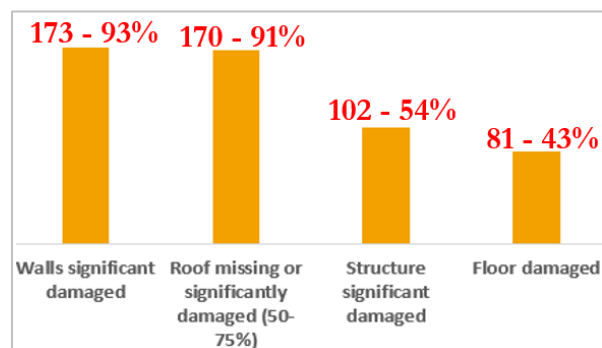


Figure 6: Problems in houses with partial damage

3. Plan to stay in the same shelter:

The majority of respondents 57% (293/510) mentioned that they do not know whether they will change the current shelter or they will stay, with some stating that as long as the landlord does not evict them, they will stay. 20% (102/510) of respondents stated that they plan to stay between six months and one year, 15% (74/510) said between from one to six months and 7% (36/510) mentioned from one to two years. For more detailed information, disaggregated by district, see Table 9.

District	1 - 6 month	6 months - 1 year	1 - 2 Years	More than 2 years	Don't know
Islahiye	28	16	9	2	83
Nizip	46	86	27	3	210
Total	74	102	36	5	293

4. Living space for each household member in square meters (m²):

It seems that the vast majority of household members are not suffering from the lack of living space in their houses, 86% (441/510) of surveyed households, has 7 m² or more for living space for each member, while 13% (67/510) of surveyed households has between 4 – 6 m² for each member. Only two houses (1%) has less than 3 m² for each member. See Figure 8.

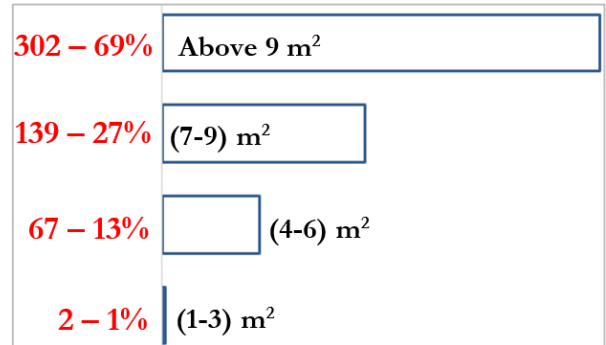


Figure 7: Living space for each household member in square meter

5. Is the house repairable?

Almost all the surveyed houses are repairable 98% (500/510); except some houses 2% (10/510). For those unrepairable houses, some of them are barns or shops, others are very old and/or damaged houses and cannot be repaired. Figure 9.

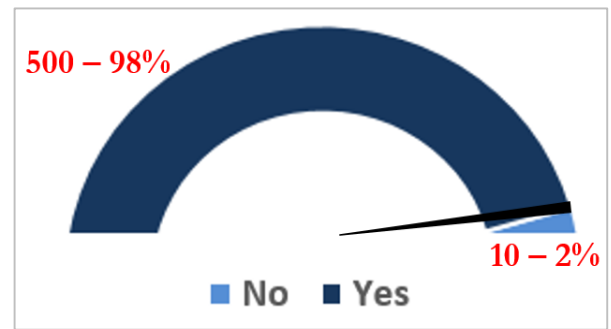


Figure 8: Does the house repairable?

6. Do you have any document to prove your current ownership/tenancy status of the shelter in Turkey?

It seems that the vast majority of households do not have any document to prove their current ownership/tenancy status of the shelter, as 95% (488/510) of respondents stated. Figure 10.

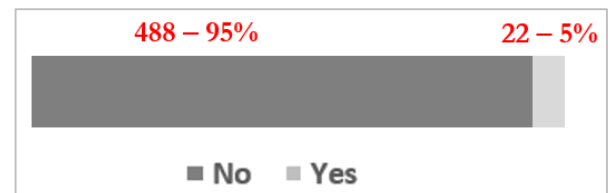


Figure 10: Do you have any document to prove your current ownership/tenancy status of the shelter in Turkey?

7. Has a member of the household registered the shelter address in the Population Directorate (NUFUS) database (MERNIS)?

It seems that the majority of households registered their shelter address in the population directorate (NUFUS) database as 79% (405/510) of respondents stated, while 21% (105/510) of respondents mentioned that they did not register their current shelter address in the population directorate (NUFUS) database. See Figure 11.

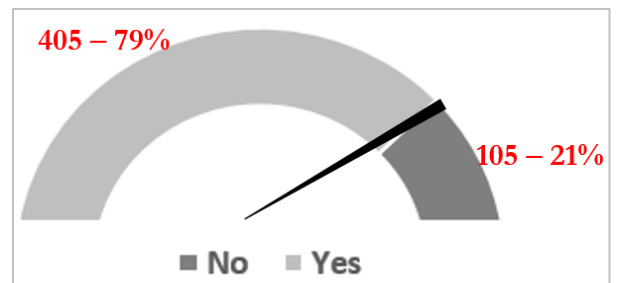


Figure 11: Has a member of the household registered the shelter address on the Population Directorate (NUFUS) database (MERNIS)?

8. Source of lighting for the shelter facility?

Almost all the household surveyed using the normal connection of electricity for the lighting (95%; 486/510), only 5% (24/510) of households are using the illegal connection (municipal connection). See Figure 12.

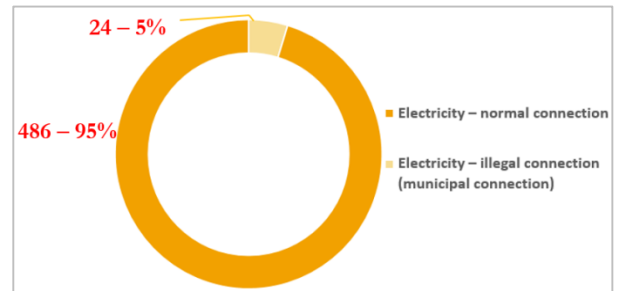


Figure 12: Source of lighting for the shelter facility?

G. Detailed conditions of the occupied facility

All data in this section was collected through direct observation by CARE enumerators.

1. Window condition:

The main two issues in the surveyed houses' windows were broken glass (56%; 287/510) and cracked around side of windows (49%; 248). 22% (114/510) of houses has good condition of its windows. While 16% (83/510) of houses has no windows. See Figure 13.

2. Door condition:

In terms of internal/external doors issues, broken doors (no handle or won't close) considered as the first issue in the surveyed houses (82%; 416/510). No locks for internal doors came in the second (57%; 292/510), 26% (132/510) of houses has some internal doors and other are missing. Figure 14 shows you more detailed information about the doors condition.

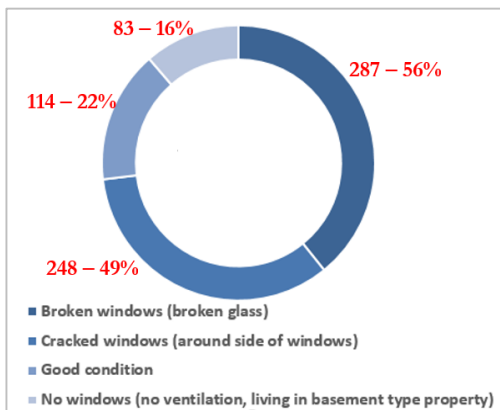


Figure 13: House's windows condition

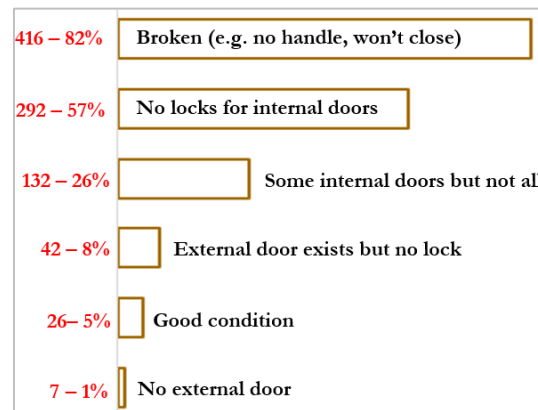


Figure 14: House's doors condition

3. Wall and ceiling condition:

Regarding walls and ceiling issues in the surveyed houses, there were two main issues, first, cracked and damaged walls (69%; 352/510), then, cracked and damaged ceiling (58%; 293/510) came in the second. See Figure 15.

4. **Floor condition:** The majority (74%; 373/510) of surveyed houses has concreted floors only, 21% (106/510) of houses has tiled floors and 9% (47/510) of houses' floors were cracked or destroyed. See Figure 16.

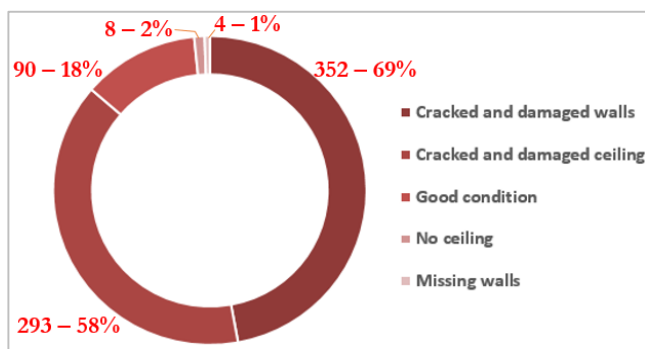


Figure 15: House's walls and ceiling condition

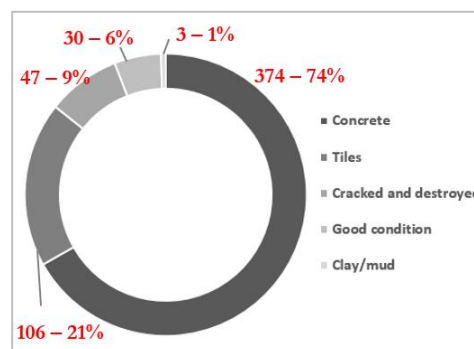


Figure 16: House's floor condition

H. Water and Sanitation

1. Where do you collect your water for drinking and cooking?

97% (496/510) of respondents stated that they are using private tap (household tap) for drinking and cooking purposes, where some families 2% (12/510) mentioned that they are purchasing water for drinking, and two families stated that are getting the water from shared taps amongst other families. Table 6 shows more detailed information disaggregated by district. See table 10.

District	Private tap	Purchase water	Shared Tap
Islahiye	130	6	2
Nizip	366	6	0
Total	496	12	2

Table 10: Where do you collect your water for drinking and cooking?

2. What is the current state of water source?

It seems that they are no issue in the water source of surveyed households as 96% (489/510) of respondents stated that the water sources are working all the time, only one respondent said: "it is broken, not working". See Table 11.

District	Broken, not working	Working all the time	Working sometimes
Islahiye	1	124	13
Nizip	0	365	7
Total	1	489	20

Table 11: What is the current state of water source?

1. Do you pay for the water you use?

95% (486/510) of respondents mentioned that they are paying for water use, and as an average, they spent 40 TL for water use. While 5% (24/510) of respondents stated they are not paying anything for water use.

2. What do you think about the quality (smell, color, taste) of water?

It seems almost half of surveyed households have same concern about the color of water they use, as 49% (251/510) of respondents stated, while 40% (204/510) of respondents mentioned that the water has very good quality, 36% (182/510) of respondents said: “water has bad taste”. See Table 12.

District	Bad taste	Has color	Smells	Looks bad (Suspended particles)	Very good quality
Islahiye	17%	67%	7%	20%	30%
Nizip	43%	43%	16%	1%	44%
Grand Total	36%	49%	13%	6%	40%

Table 12: What do you think about the quality of water?

3. How satisfied are you with the quantity of water you are accessing?

It seems that the quantity of water accessing by the surveyed households is enough for their daily use, as 97% (495/510) of respondents stated. Only 1% (6/510) of respondents mentioned that they are not satisfied with the quantity of water they access. Figure 17.

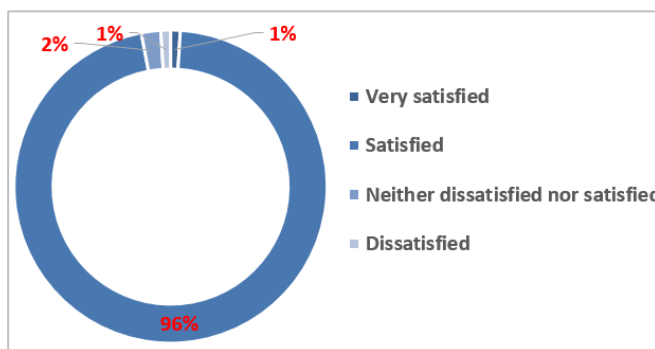


Figure 17: How satisfied are you with the quantity of water you are accessing?

4. What type of bathing facilities do you use?

When it comes to the type of bathing facilities that the households’ members use, 61% (314/510) of respondents stated they are using private bath at their houses, while 31% (150/510) of respondents mentioned to use living space (with bucket) as a bath. 8% (39/510) of respondents said: “we are using shared bath with other families”. See Table 13.

District	Private bathing	Using living space	Shared	Other
Islahiye	71	50	15	2
Nizip	243	100	24	5
Total	314	150	39	7

Table 13: What type of bathing facilities do you use?

5. What are the five main concerns with sanitation (Toilets)?

Data in this question was collected through direct observation by CARE enumerators to prioritize the first five main concerns with sanitation in the surveyed houses. First, toilets are not hygienic (53%; 270/510), Toilets are not providing enough privacy, came in the second (41%; 209/510). The third concern was the toilets are not lockable (41%; 408/510). No handwashing facility at toilet came in the fourth (39%; 197/510). The fifth concern was no lighting in toilets (29%; 146/510). For more information about the other sanitation concerns, see Figure 18.

It should be note that the **average number of people sharing same toilet is 7**.



Figure 18: What are the five main concerns with sanitation?

6. Where do you dispose of the water used for laundry?

Regarding where the households’ members dispose the water used for laundry, 84% (428/510) of respondents stated they use washing machine connected to a public sewage system, 14% (73/510) of respondents said: “Throw water outside the house”. While only 2% (9/510) mentioned that they use wash center (Launderette). See Figure 19.

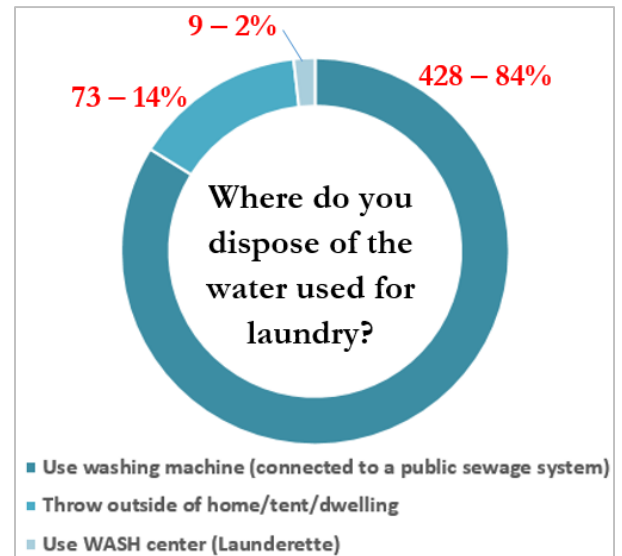


Figure 19: Where do you dispose of the water used for laundry?

7. Is Household able to purchase hygiene items?

Almost one third 35% (178/510) of respondents stated they are not able to purchase hygiene items for their house use. While 65% (332/510) of respondents mentioned that they are able to purchase hygiene items. Figure 20.

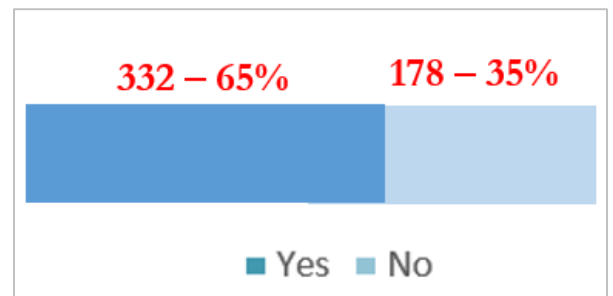


Figure 9: Does HH able to purchase hygiene items?

8. Is household able to purchase hygiene items for elderly and disabled?

Almost two third of respondents mentioned that they are not able to purchase hygiene items for elderly and disabled household's members (62%; 314/510). While 38% (196/510) of respondents stated they are able to purchase hygiene items for elderly and disabled. Figure 21.

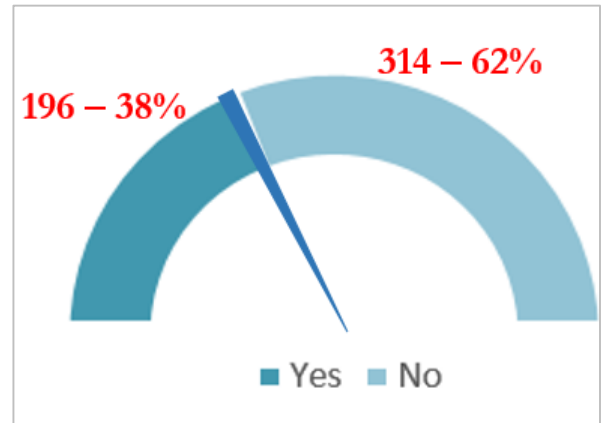


Figure 10: Does HH able to purchase hygiene items for elderly and disabled?

VI. Discussions and Recommendations

- Considering the relevant findings, access for persons with reduced mobility will be considered, and necessary changes to improve mobility in the housing unit—such as installation of railings or widening of spaces especially in bathrooms—will be implemented;
- Works is being implemented taking winter into account where one of the main shelter needs is dealing with leakage from poor roofing and cracks;
- When selecting contractors, priority will be given to contractors employing refugees;
- The necessity of having a technician supervising all upgrades to housing—from the assessment, quotation, development of bill of quantities, to installation phases—in order to ensure quality and financial control;
- As 63% of surveyed houses are minor damaged, and 37% are partially damaged, where possible, cash-for-work approaches will be employed in order to involve tenants in the rehabilitation process and provide income generating opportunities that could potentially be linked to planned CARE livelihood projects.