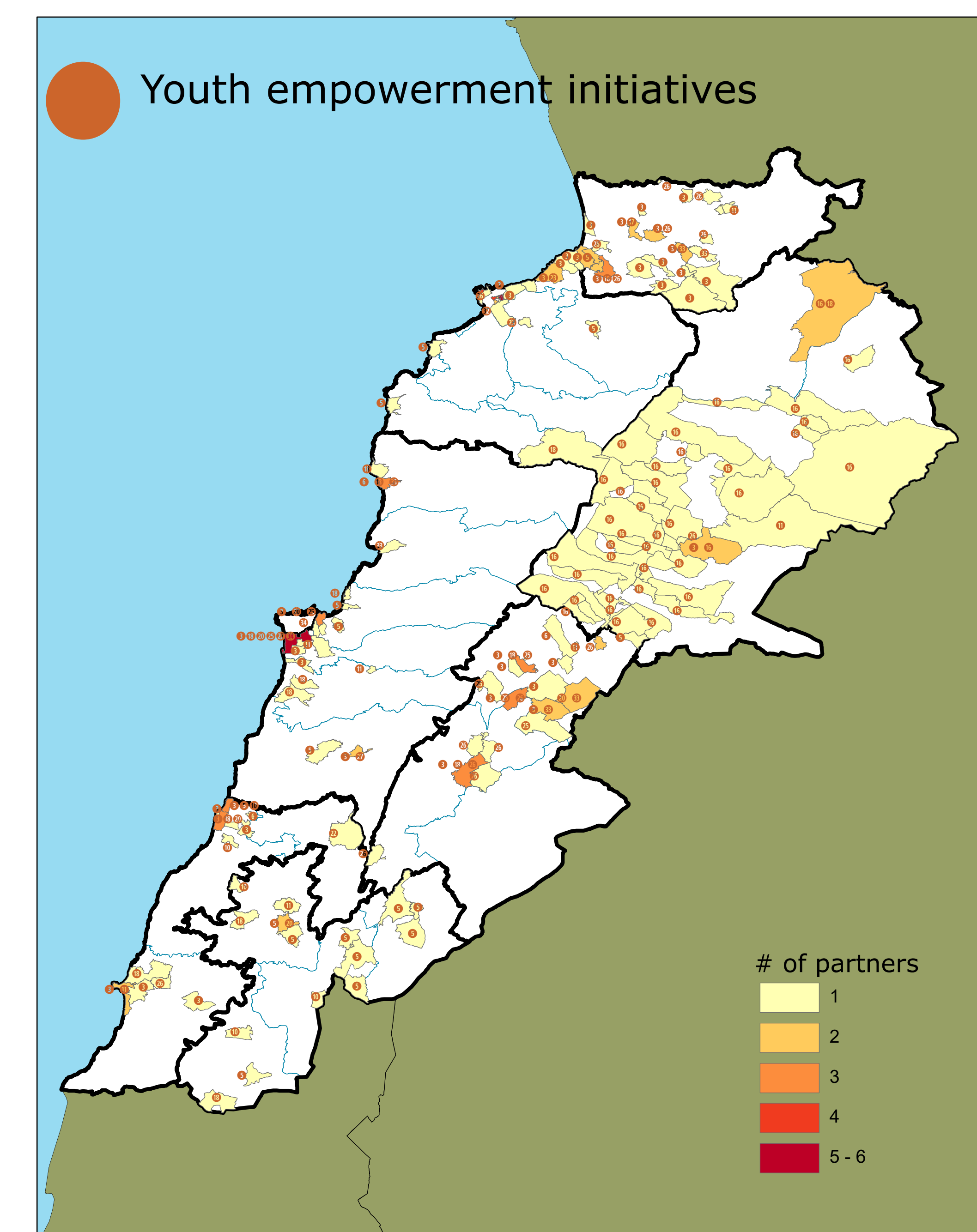
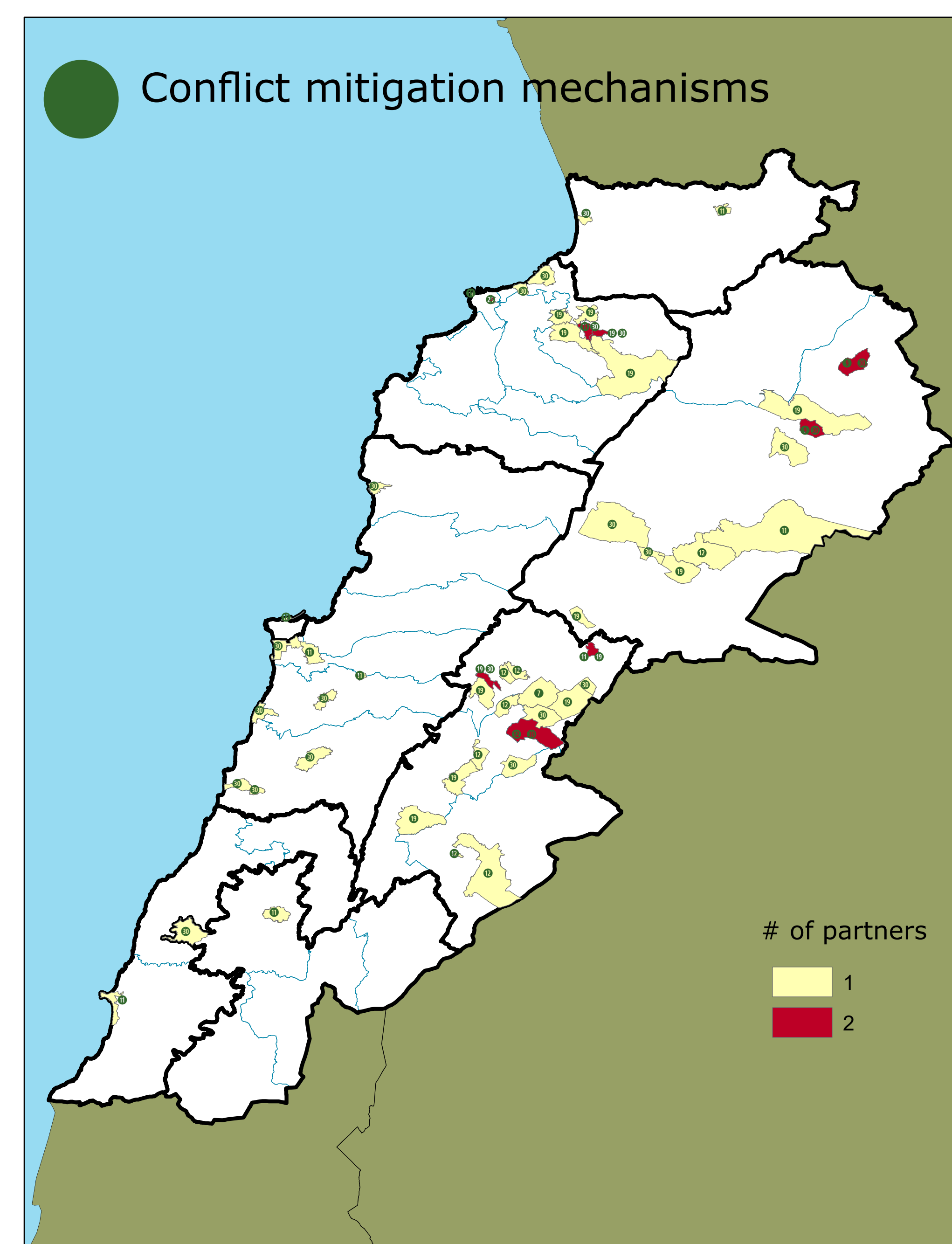
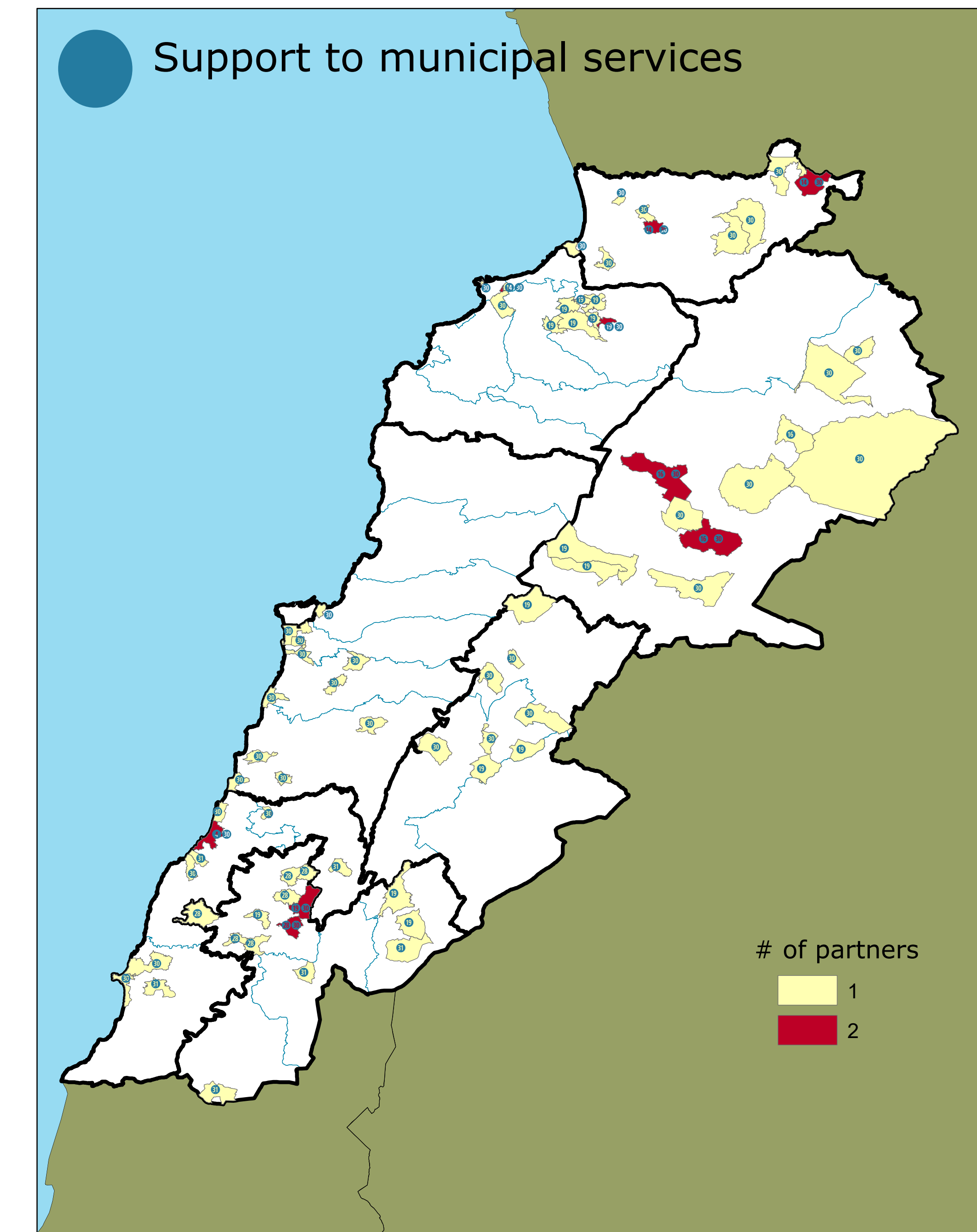
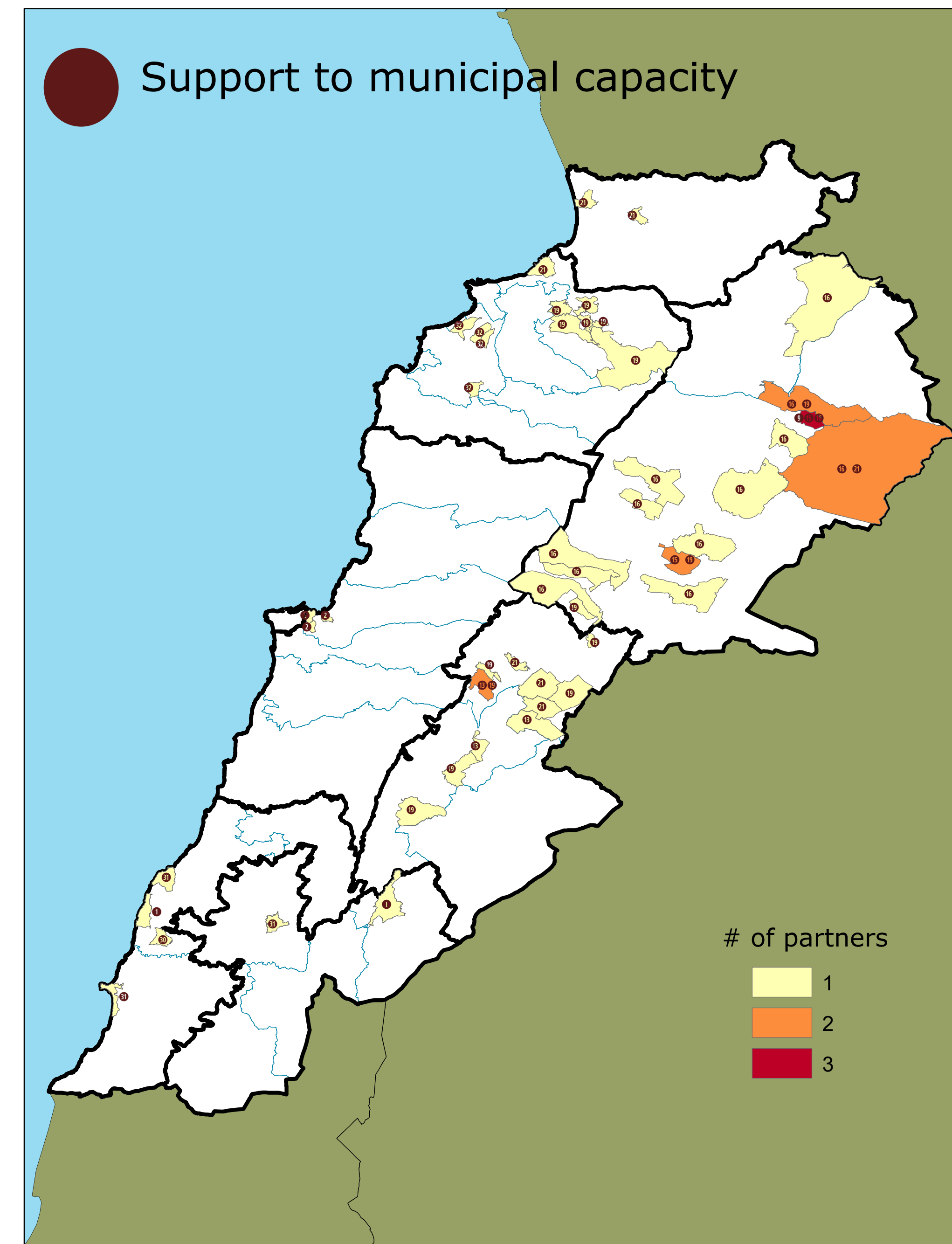
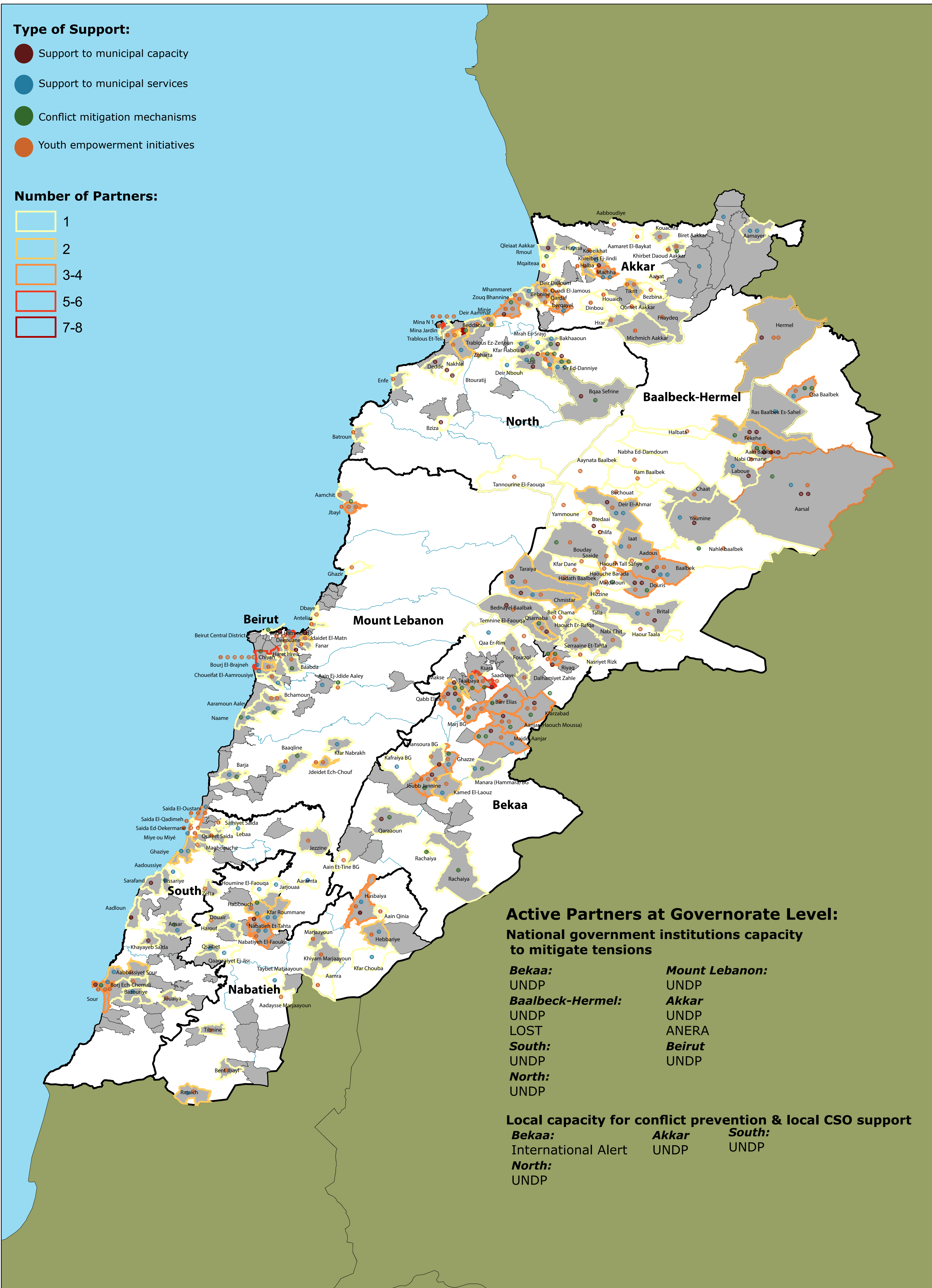




Inter-Agency Coordination
Lebanon

Social Stability Sector

3Ws Mapping: January - September 2017



- Administrative Boundaries:**
- Vulnerable Cadastres
 - Districts
 - Governorates
 - Neighbouring Countries
- | | | | | | |
|--------------|--------------------------|-------------|----------------|------------------------------|---------------|
| 1 ACF | 7 Basmeh & Zeitooneh | 13 Intersos | 19 Mercy Corps | 25 SCI | 31 UN-Habitat |
| 2 ACTED | 8 CISP | 14 IOM | 20 MSL | 26 SFCG | 32 UNICEF |
| 3 ANERA | 9 GVC | 15 IRC | 21 NRC | 27 SIF | 33 UN-Women |
| 4 ARMADILLA | 10 Hilfswerk Austria Int | 16 LOST | 22 OXFAM | 28 Solidar | 34 WVI |
| 5 AVSI | 11 Hoops Club | 17 MARCH | 23 RMF | 29 Solidarites International | |
| 6 Avsi-Cesvi | 12 House of Peace | 18 MASAR | 24 SAFADI | 30 UNDP | |