

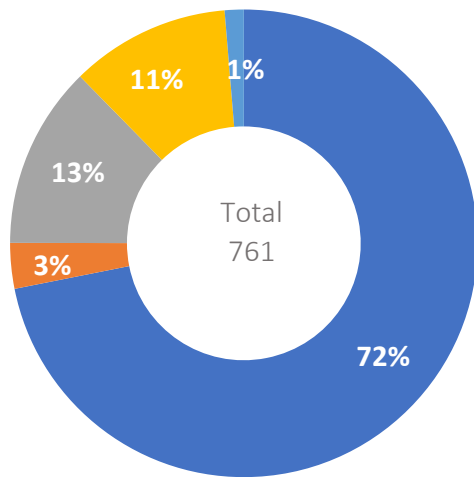


**OUTCOME 4: Provide boys and girls at risk and survivors of violence, exploitation and abuse with access to an improved and equitable prevention and response.**

**Output 4.2: Holistic and integrated CP services offered to boys and girls at risk and survivors of violence, abuse and exploitation.**

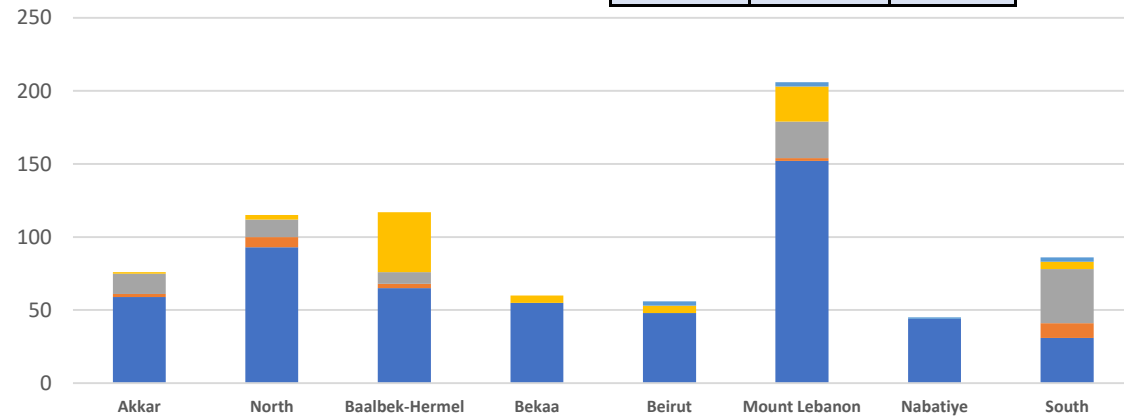
Information management: Vicken Ashkarian, vashkarian@unicef.org

**Indicator 4.2.2: # of boys & girls receiving Case Management**



- SYR
- PRS
- PRL
- LEB
- OTH

Disaggregations		
Cohorts	Sex	Risk type
761	761	265



Aggregated per sex		Aggregated per age groups*		
Male	Female	0 - 5	6 - 11	12 - 17
68.7%	31.3%	14.6%	39.7%	45.7%

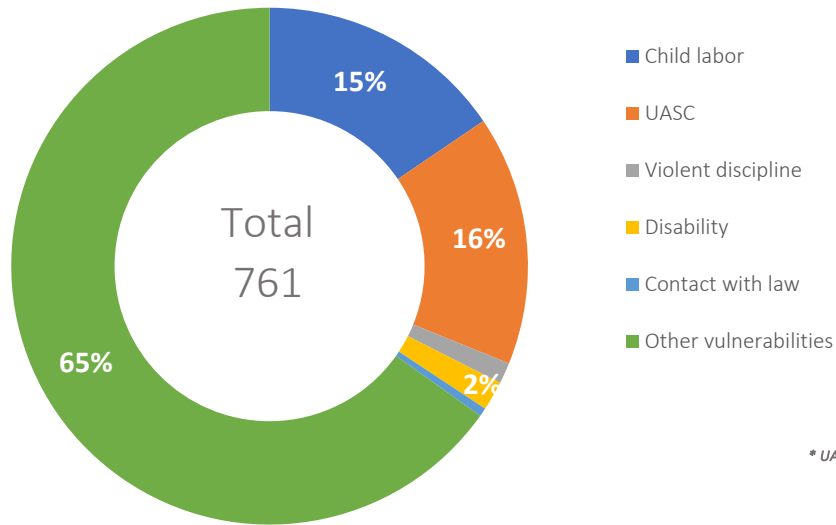
\* Disaggregation by age excludes data from UNICEF Pal. Prog.

Governorates							
Akkar	North	B-H	Bekaa	Beirut	ML	Nabatiye	South
76	115	117	60	56	206	45	86

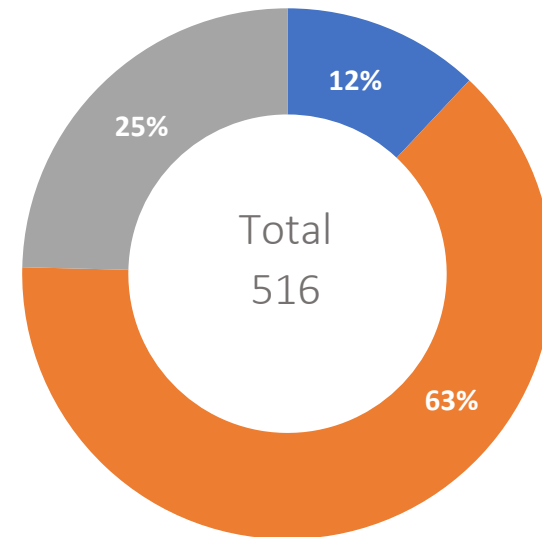
**Partners:** Himaya, Intersos, Makhzoumi Foundation, MAP, OWS, SCI, TdH - It, TDH-Lausanne.

**Indicator 4.2.2: # of boys & girls receiving Case Management**

**Beneficiaries per Vulnerability**

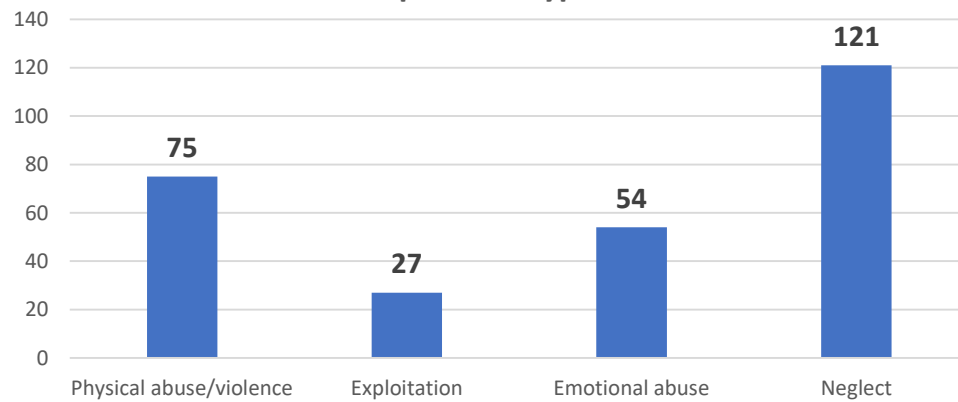


**Beneficiaries per Risk Level**

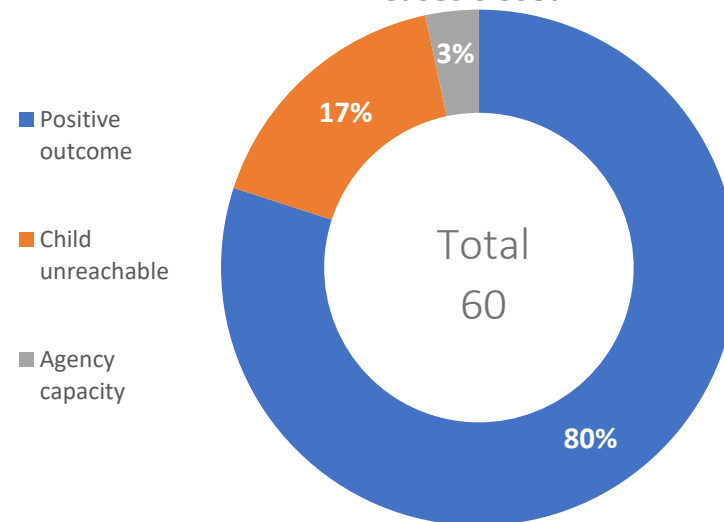


\* UASC=Unaccompanied and separated children

**Beneficiaries per Risk Type**



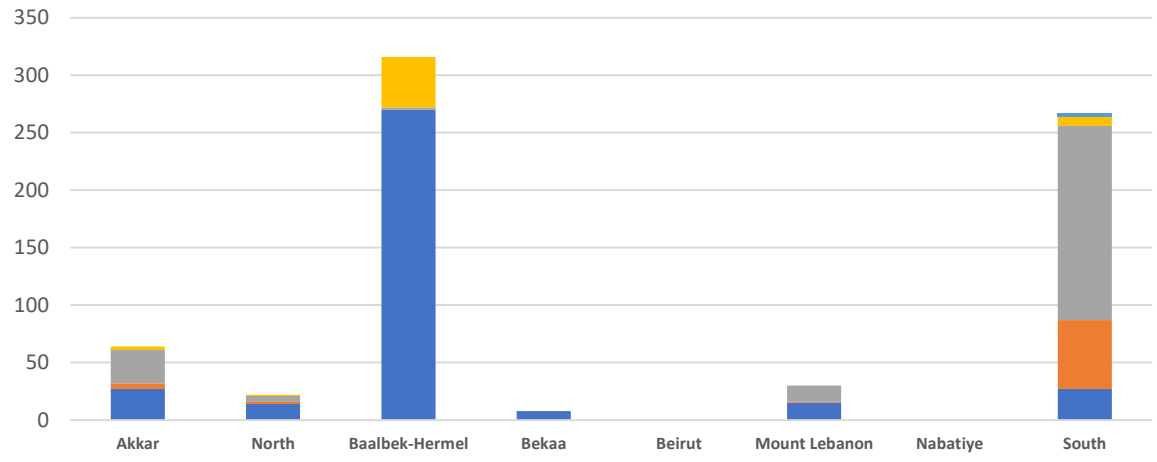
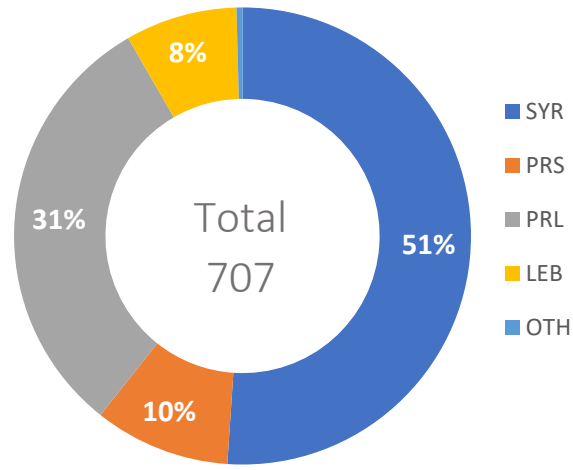
**Cases closed**



**Indicator 4.2.3: # of boys & girls assisted through CP Focused PSS services**

Disaggregations			
Cohorts	Sex	Age*	Risk type
707	707	366	11

\* Disaggregation by age excludes data from UNICEF Pal. Prog.



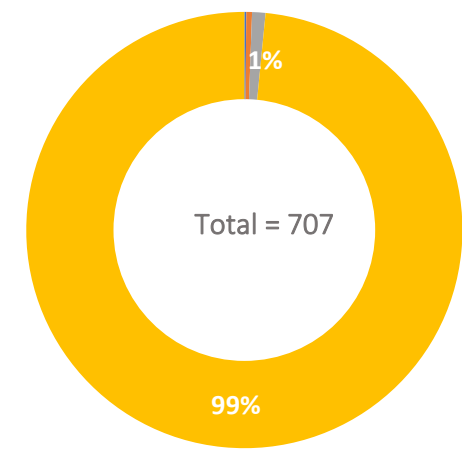
Aggregated per sex		Aggregated per age groups*		
Male	Female	0 - 5	6 - 11	12 - 17
44.0%	56.0%	0.3%	77.0%	22.7%

\* Disaggregation by age excludes data from UNICEF Pal. Prog.

Governorates							
Akkar	North	B-H	Bekaa	Beirut	ML	Nabatiye	South
64	22	316	8	0	30	0	267

**Risk type**

- Child labor
- Child marriage
- Violent discipline
- Other risk

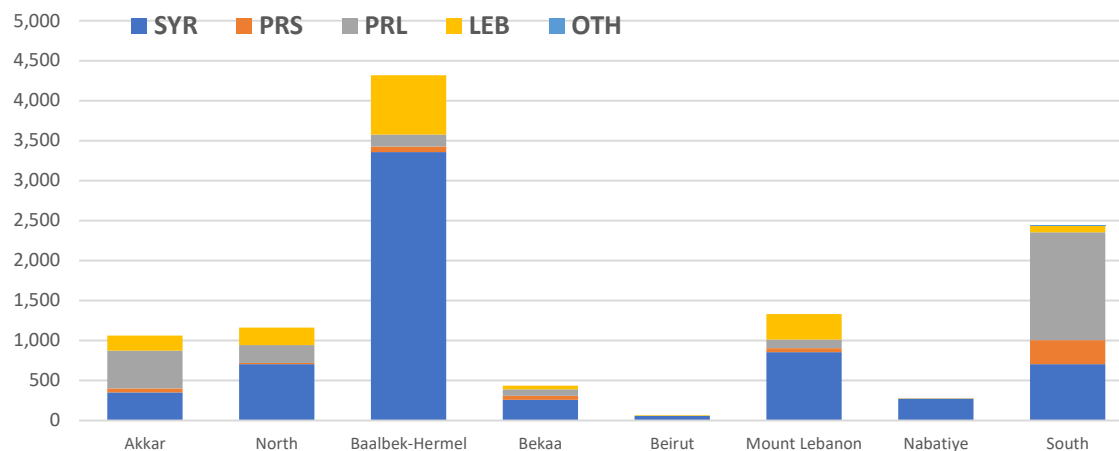
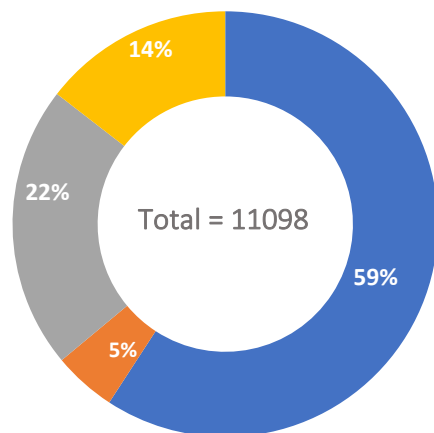


**Partners:**  
DRC/LRC, Intersos, MAP, SCI, TdH - It, UNRWA.

**Output 4.3: Vulnerable children, families and communities supported to promote practices that protect them.**

**Indicator 4.3.2: # of boys & girls engaged in community-based Child Protection activities**

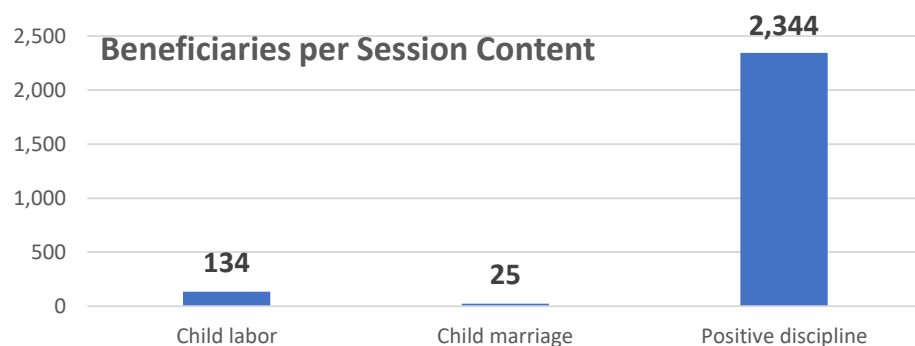
Disaggregations	
Cohorts	Sex
11098	11098



Aggregated per sex		Aggregated per age groups*		
Male	Female	0 - 5	6 - 11	12 - 17
45.0%	55.0%	25.9%	65.2%	8.9%

\* Disaggregation by age excludes data from UNICEF Pal. Prog.

Governorates							
Akkar	North	B-H	Bekaa	Beirut	ML	Nabatiye	South
1063	1163	4319	437	65	1332	276	2443



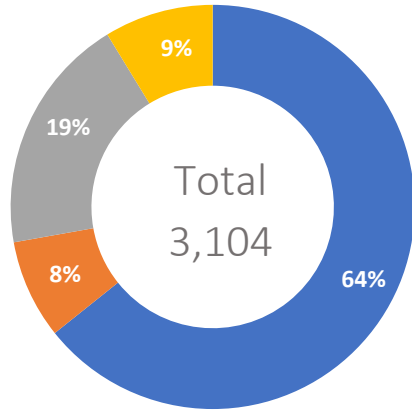
**Partners:**

ARCPA, DRC/LRC, Interos, IR, Makhzoumi Foundation, MAP, SIF, TdH - It, WVI, YNCA.

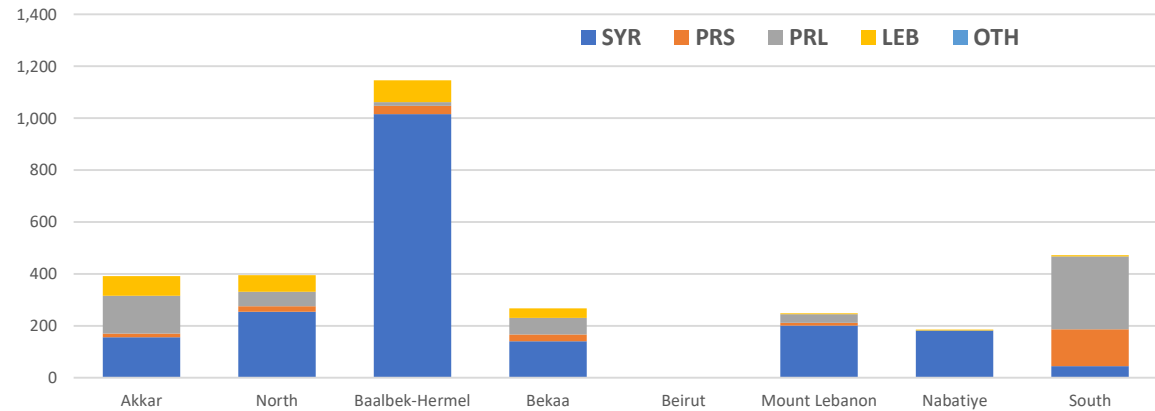
**Indicator 4.3.3: Caregivers engaged in community-based CP activities**

Support Groups		Parenting Skills	
Cohorts	Sex	Cohorts	Sex
3104	3104	38	38

**Support Groups**

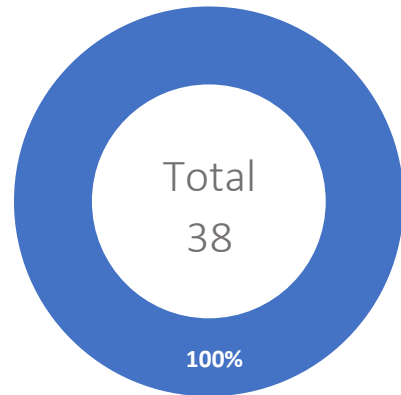


Activities per sex	
Male	Female
4.7%	95.3%



Parents Support Groups per Governorate							
Akkar	North	B-H	Bekaa	Beirut	ML	Nabatiye	South
391	395	1146	267	0	248	185	472

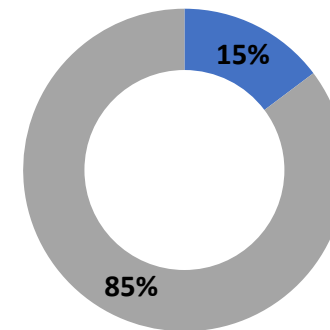
**Parenting Skills**



Activities per sex	
Male	Female
5.3%	94.7%

**Parenting skills beneficiaries per session content**

- Child labor
- Child marriage
- Positive discipline

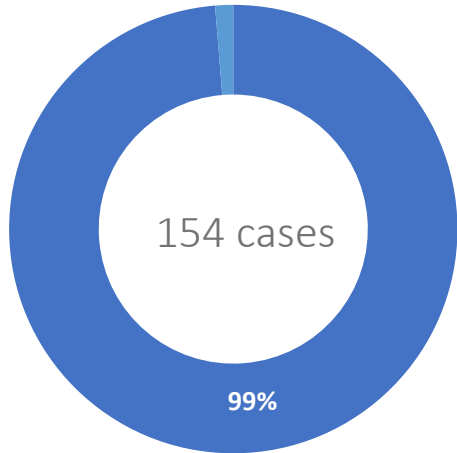


**Partners:**

ARCPA, DRC/LRC, Intersos, Makhzoumi Foundation, MAP, OWS, SIF, TdH - It, UNRWA, WVI, YNCA.

**CHILD LABOR** in Case Management and in Focused psychosocial support

**CASE MANAGEMENT**



- SYR
- PRS
- PRL
- LEB
- OTH

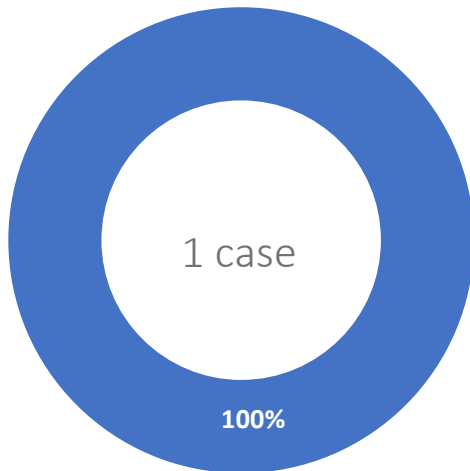
Disaggregations		
Cohorts	Sex	Age
154	154	157

Activities per sex	
Male	Female
92.9%	7.1%

Child labor in CM per age group		
0 to 5	6 to 11	12 to 17
0	48	109

Child labor in CM per Governorate							
Akkar	North	B-H	Bekaa	Beirut	ML	Nabatiye	South
5	31	7	4	39	54	12	2

**FOCUSED PSYCHOSOCIAL SUPPORT**



- SYR
- PRS
- PRL
- LEB
- OTH

Disaggregations		
Cohorts	Sex	Age
1	1	1

Activities per sex	
Male	Female
0.0%	100.0%

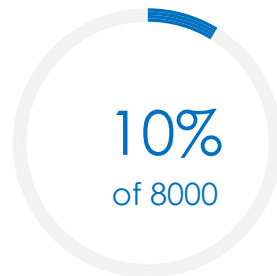
Child labor in F-PSS per age group		
0 to 5	6 to 11	12 to 17
0	0	1

Child labor in F-PSS per Governorate							
Akkar	North	B-H	Bekaa	Beirut	ML	Nabatiye	South
0	0	0	1	0	0	0	0

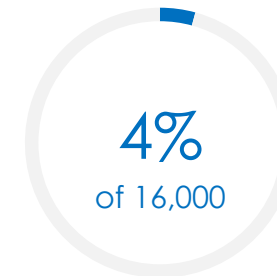


**OUTCOME 4: Provide boys and girls at risk and survivors of violence, exploitation and abuse with access to an improved and equitable prevention and response.**

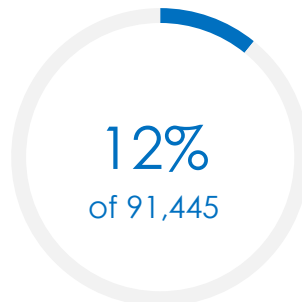
### CASE MANAGEMENT SERVICES



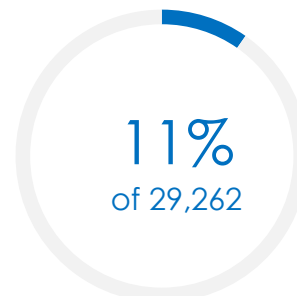
### FOCUSD PSS SERVICES



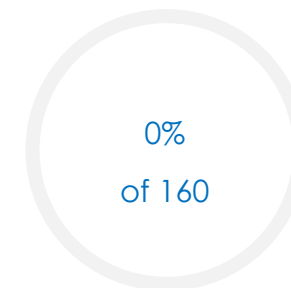
### CHILDREN IN CB-BASED CP ACTIVITIES



### CAREGIVERS IN CB-BASED CP ACTIVITIES



### COMMUNITIES ENGAGED IN CHILD PROTECTION



#### Partners:

ARCPA, DRC/LRC, Himaya, Intersos, IR, Makhzoumi Foundation, MAP, OWS, SCI, SIF, TdH - It, TDH-Lausanne, UNRWA, WVI, YNCA.