

SOUTH SUDAN SITUATION

Regional overview of population of concern

as of 15 April 2017



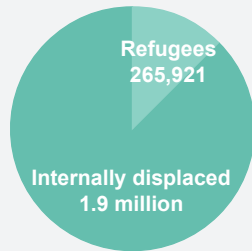
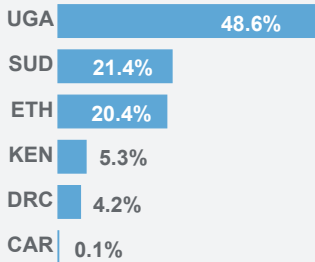
KEY FIGURES



3.98 MILLION
population of concern

1.82 million
total refugees
from South Sudan

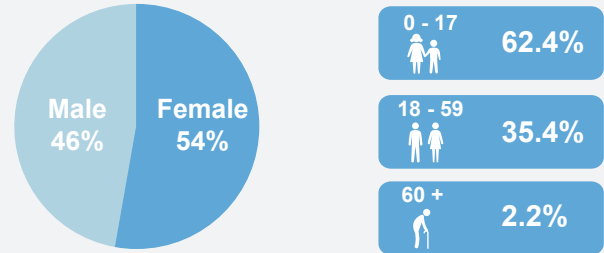
2.16 million
pop. of concern
in South Sudan



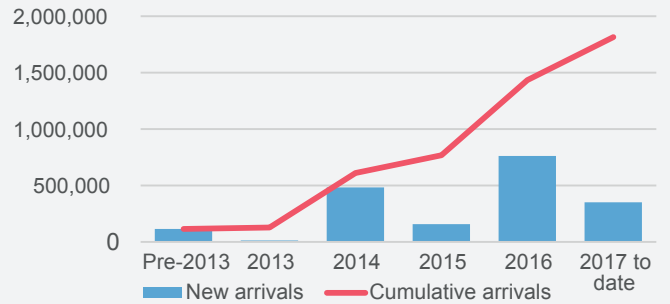
USD 781.8 million requested
USD 94.1 million received (12%)
by UNHCR in 2017 for the South Sudan situation

SOUTH SUDANESE REFUGEES

Sex and age breakdown of registered refugees in the region

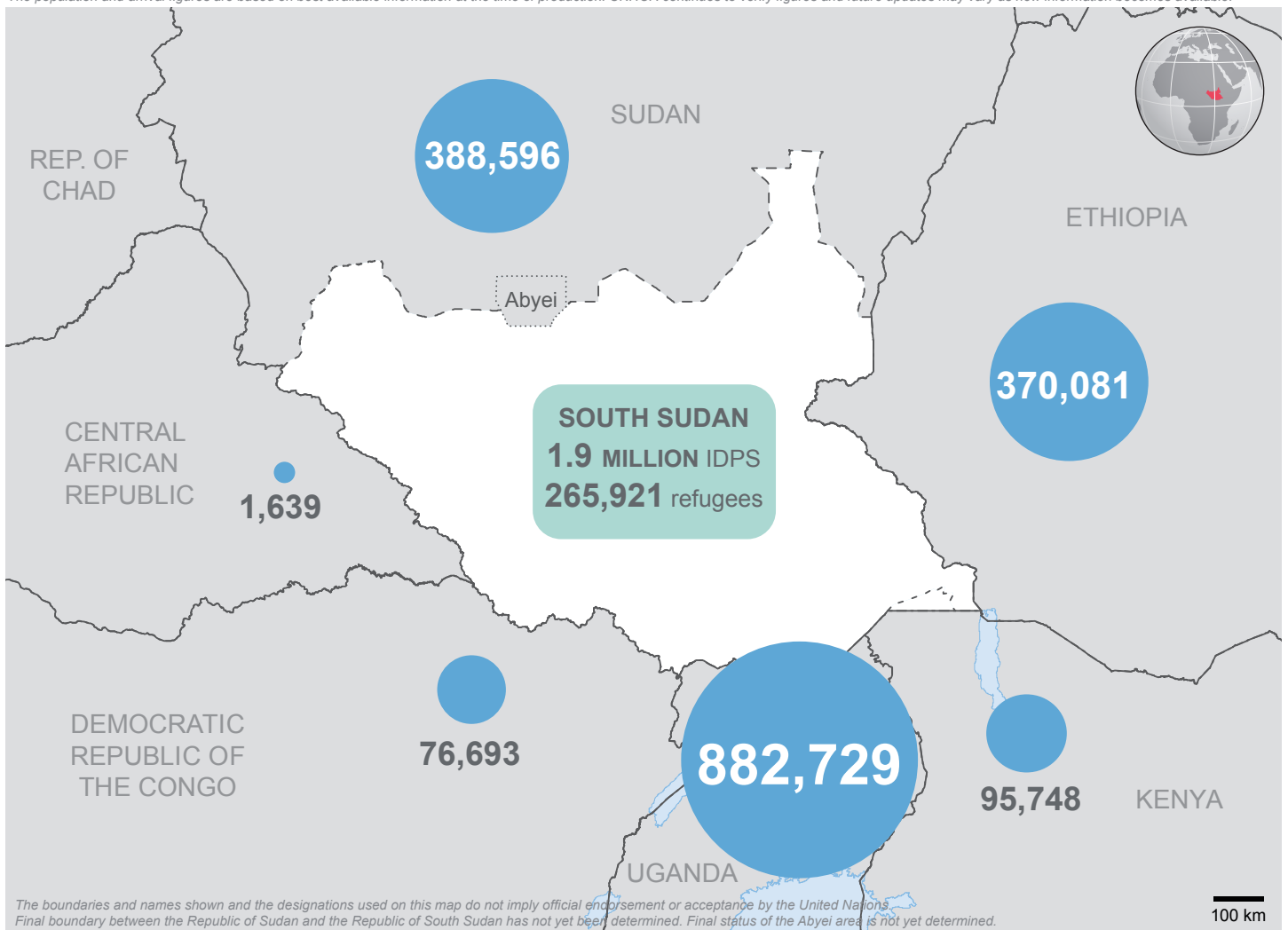


Yearly and Cumulative South Sudanese Refugee Arrivals



2017 arrivals (1 Jan - 15 Apr): 350,819
based on field reports, UNHCR and Government registration

The population and arrival figures are based on best available information at the time of production. UNHCR continues to verify figures and future updates may vary as new information becomes available.



The boundaries and names shown and the designations used on this map do not imply official endorsement or acceptance by the United Nations. Final boundary between the Republic of Sudan and the Republic of South Sudan has not yet been determined. Final status of the Abyei area is not yet determined.

100 km