



### Wastewater Networks

- Existing Networks
- Existing (Pressure Line)
- Proposed Networks
- LCRP Projects
- Non LCRP Projects

### Wastewater Treatment Plants

- Existing WWTP
- Planned WWTP
- Proposed WWTP

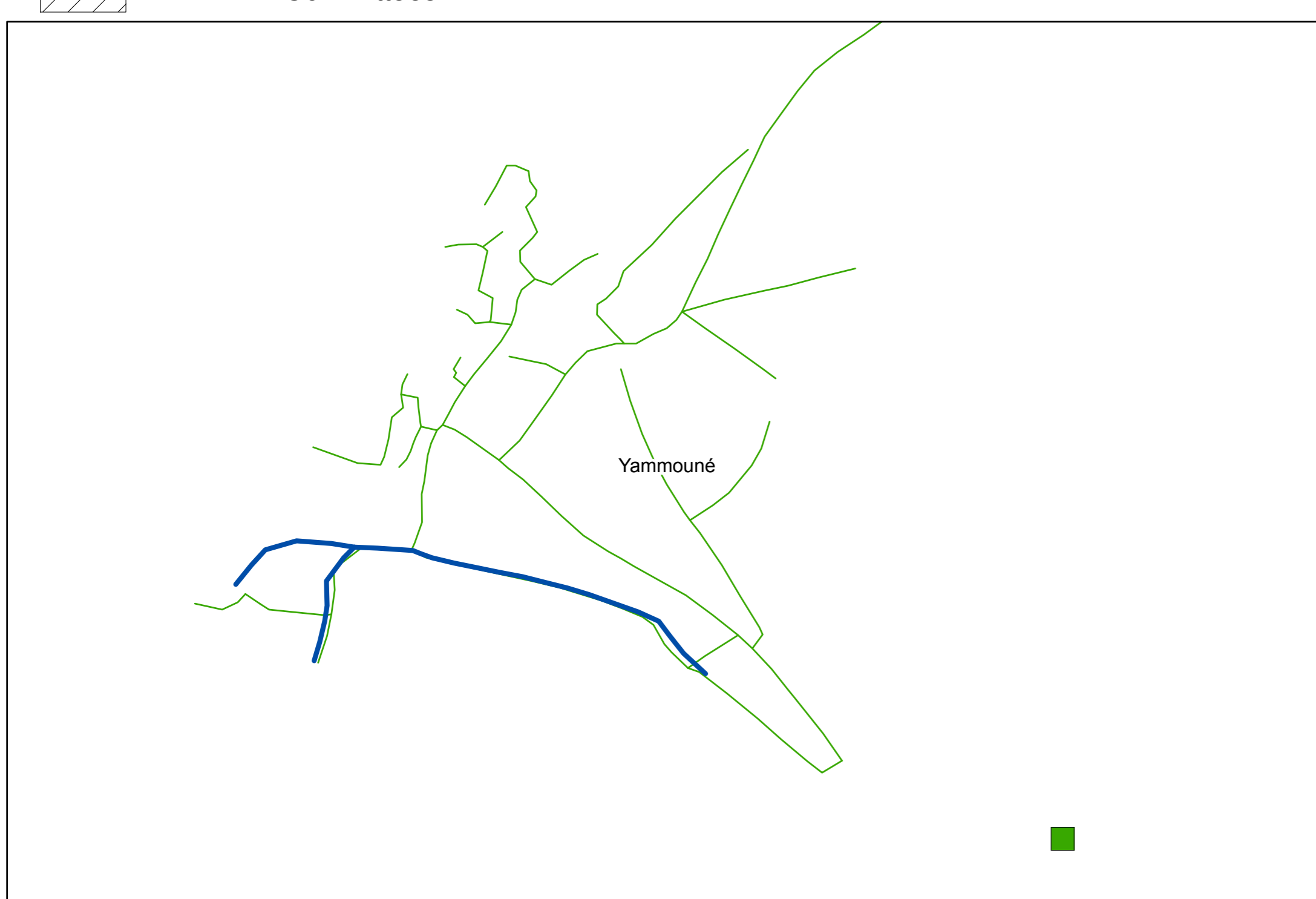
**Note:** Some of wastewater treatment plants not reflected on map. Please refer to Master Plan 2015 (PDF)

### Vulnerable Localities

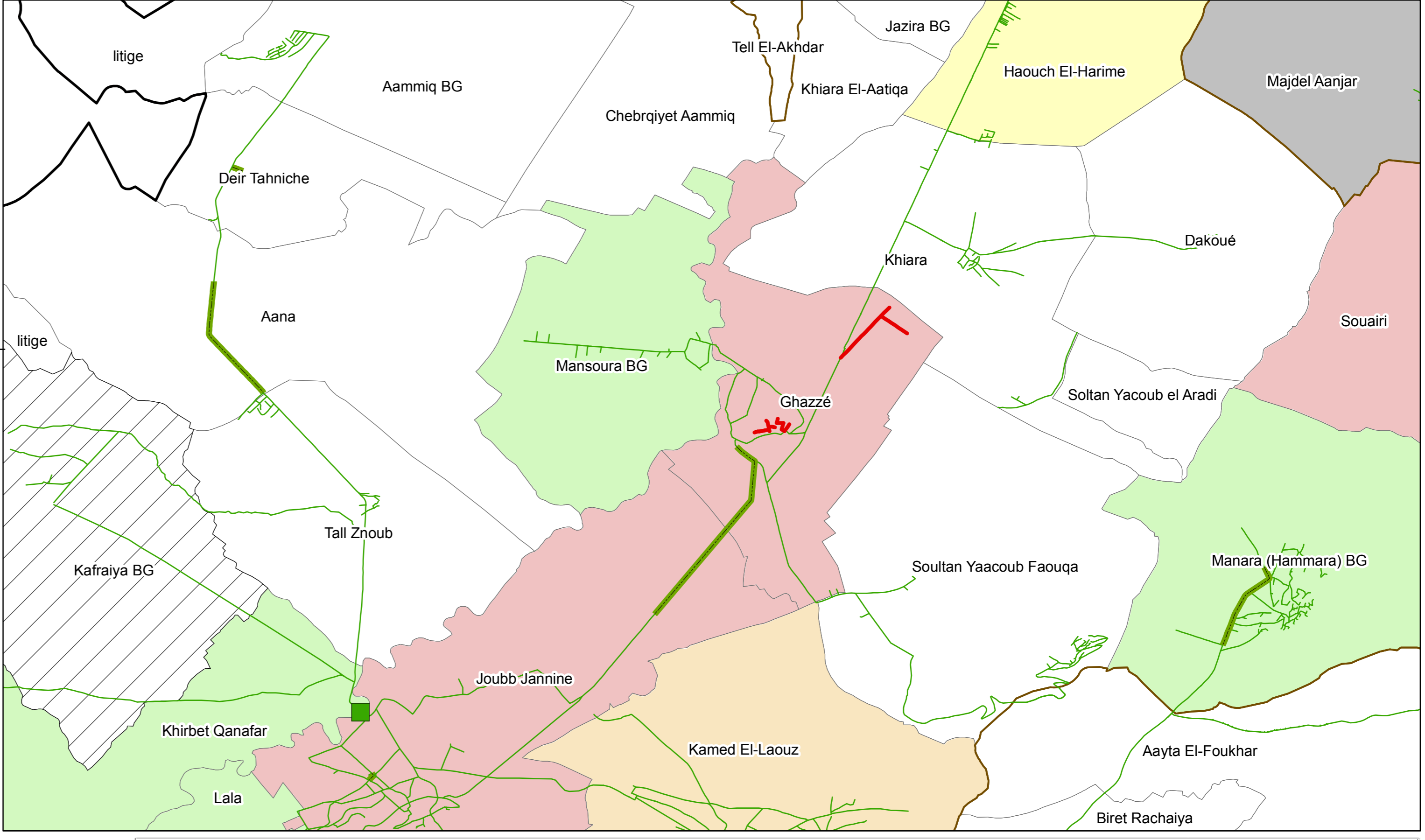
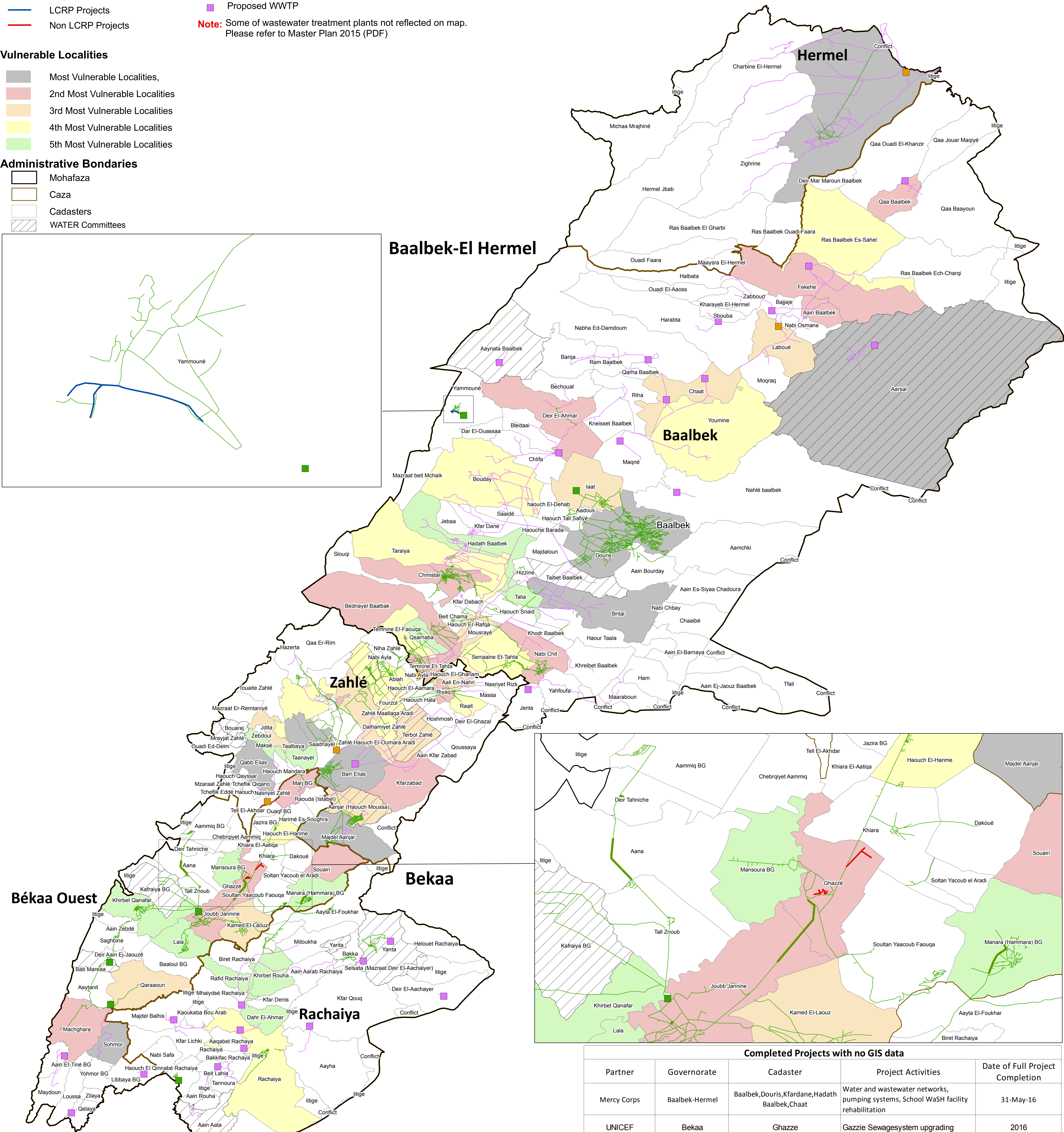
- Most Vulnerable Localities,
- 2nd Most Vulnerable Localities
- 3rd Most Vulnerable Localities
- 4th Most Vulnerable Localities
- 5th Most Vulnerable Localities

### Administrative Bondaries

- Mohafaza
- Caza
- Cadasters
- WATER Committees



### Baalbek-El Hermel



Wastewater Completed Projects				
Partner	Governorate	Cadaster	Year of Completion	Project Type
UNICEF	Baalbek-Hermel	Yammoune	2014	LCRP
ESFD	Bekaa	Ghazze	2016	Non LCRP

Completed Projects with no GIS data				
Partner	Governorate	Cadaster	Project Activities	Date of Full Project Completion
Mercy Corps	Baalbek-Hermel	Baalbek, Douris, Kfardane, Hadath Baalbek, Chaat	Water and wastewater networks, pumping systems, School WaSH facility rehabilitation	31-May-16
UNICEF	Bekaa	Ghazze	Gazzie Sewagesystem upgrading	2016
UNICEF	Bekaa	Municipality	Augmentation/rehabilitation of wastewater collection in 2 Municipalities	30-Oct-15
UNDP	Bekaa	Saadnayel	Construction of Sewagenetworks of 2,880m for 8 locations in Ein Al Hamah and Al Amriyeh	30-Sep-14
UNDP	Bekaa	Taalbaya	Construction of a sewer line in the Industrial area length 1,610m; Construction of a Sewagenetwork in Al Sanawbar area length 2,456m	30-Sep-14
UNDP	Bekaa	Aain Kfar Zabab	Extension of the wastewater network for better hygiene and health conditions in	30-Nov-14

Source: Water networks data from the final Data Master Plan 2015 with updates from the BWE 2016.

Calculation of Most vulnerable Localities are based on following data sets.

- 1- Multi-Deprivation Index
- 2-Lebanese population dataset
- 3- Refugee population figures

The top quintile of the vulnerability mapping includes 251 localities

This map has been produced by the WATER Sector Management officer based on maps and material provided by the Government of Lebanon for operational purposes. It does not constitute an official United Nations map. The designations employed and the presentation of material on this map do not imply the expression of any opinion whatsoever on the part of the Secretariat of the United Nations concerning the legal status of any country, territory, city or area or of its authorities, or concerning the delimitation of its frontiers or boundary

