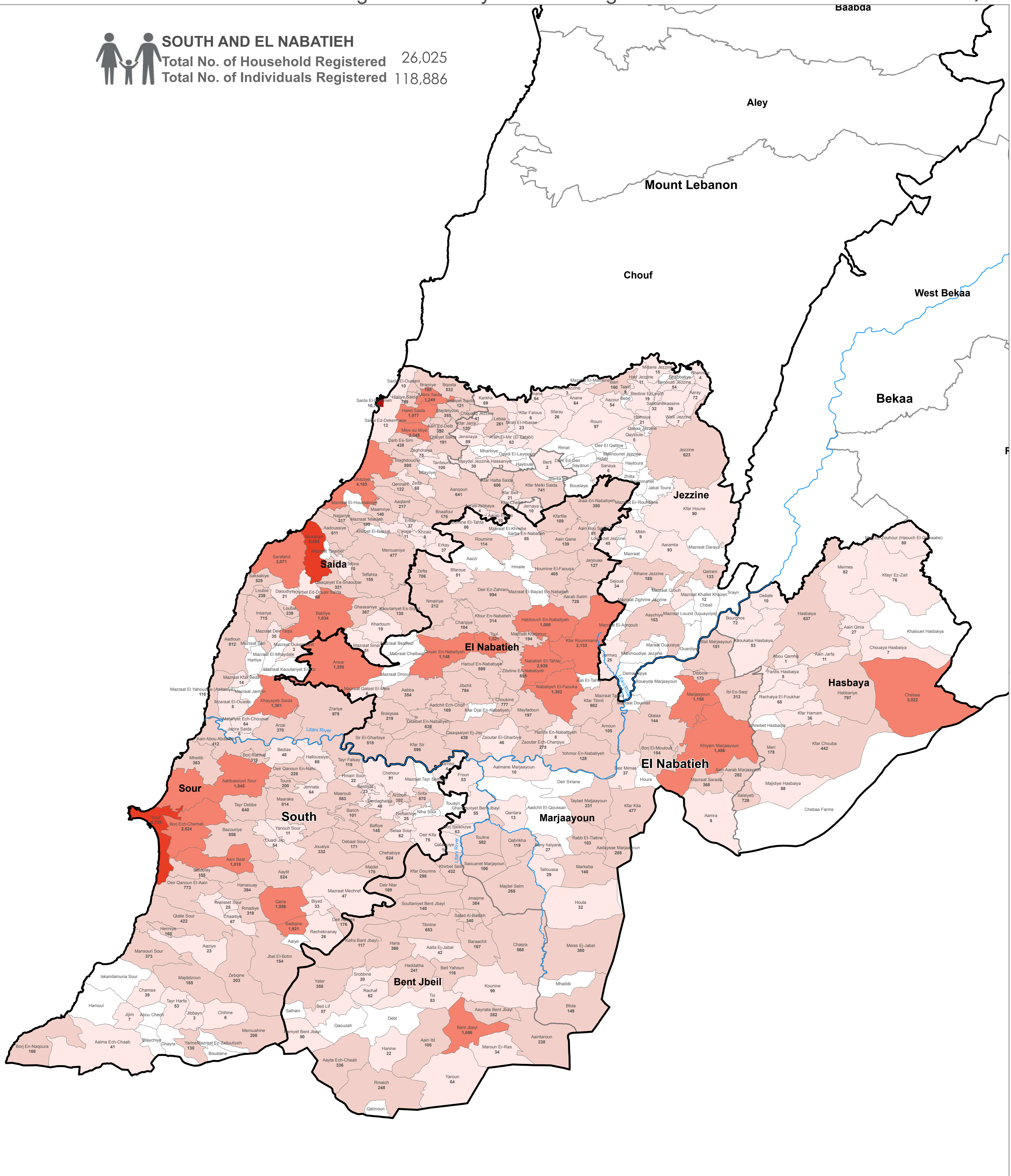


SYRIA REFUGEE RESPONSE

LEBANON South and El Nabatieh Governorates

Distribution of the Registered Syrian Refugees at Cadastral Level As of 31 January 2018

SOUTH AND EL NABATIEH
 Total No. of Household Registered 26,025
 Total No. of Individuals Registered 118,886



Legend

- Litani River
- ▭ Governorate
- ▭ Caza

No. of Refugees per Cadastral

- 1 - 100
- 101 - 1,000
- 1,001 - 5,000
- 5,001 - 10,000
- 10,001 - 11,050

The No. indicates the registered refugees at the cadastral level

Notes
 This map has been produced by the Inter-Agency Information Management Unit of UNHCR based on maps and material provided by the Government of Lebanon for operational purposes. It does not constitute an official United Nations map. The designations employed and the presentation of material on this map do not imply the expression of any opinion whatsoever on the part of the Secretariat of the United Nations concerning the legal status of any country, territory, city or area or of its authorities, or concerning the delimitation of its frontiers or boundaries.

Data Sources:
 - Lebanese Border, Caza and Cadastral Boundaries: NPMP LT 2005.
 - Geographic Projection WGS 1984

Registered Refugees Figures by UNHCR as of 31 January 2018.
 For more information contact Diana El Habr at ehabr@unhcr.org

GIS and Mapping by UNHCR. For information and updates contact Jad Ghosn: ghosn@unhcr.org
 Maroun Sader: sader@unhcr.org

NPMP LT: National Physical Master Plan for the Lebanese Territory

LOCATION DIAGRAM

