



SYRIA IDP OPERATIONS 2016

Produced By UNHCR Syria Reporting Unit
syrdareporting@unhcr.org

Valid as of 14/12/2016



CORE RELIEF ITEMS (CRIs) IN 2016

CRI Dispatch in 2016, amounts to **2,493,994** individuals

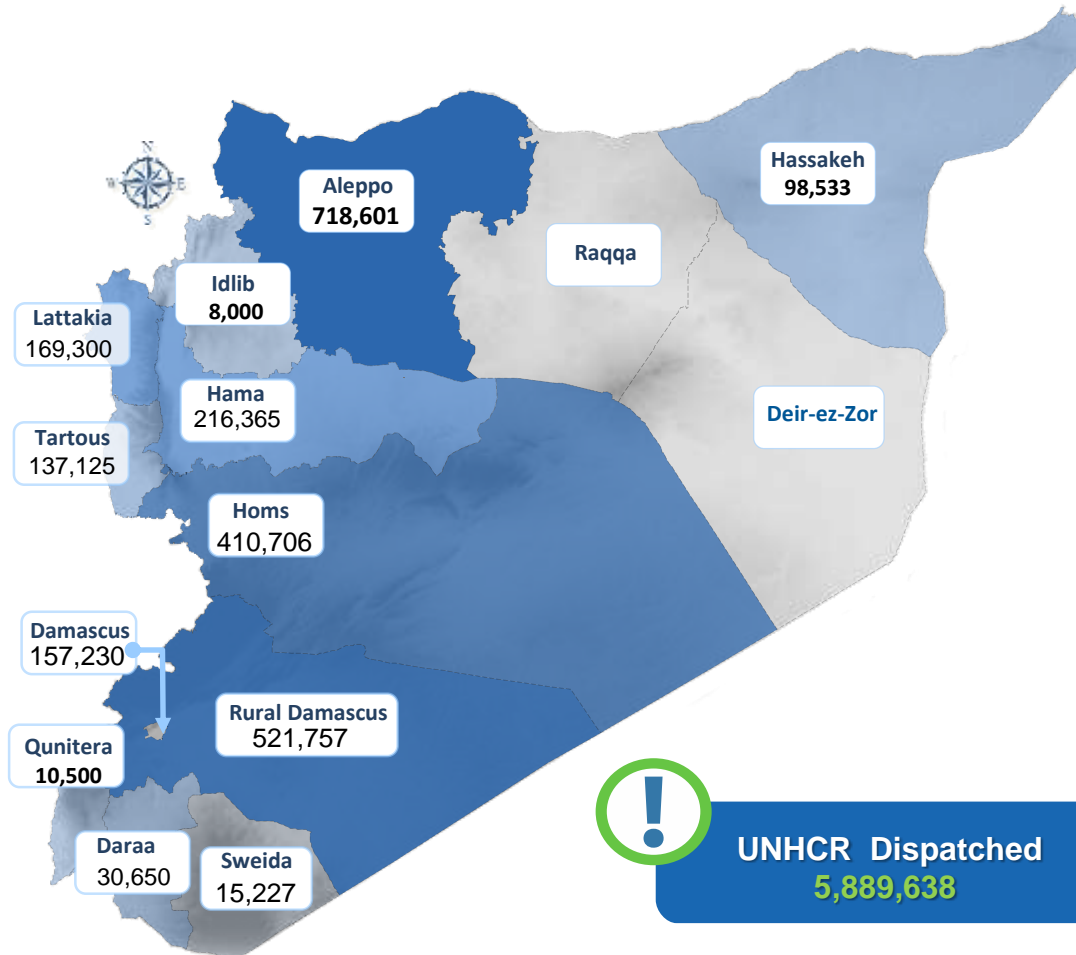
2,493,994 Beneficiaries of CRI by location

Distribution Methodology :

CRIs are distributed in accordance with the needs assessed by UNHCR staff and by implementing partners on the ground.

In areas where everything is needed families receive a CRI Family Kit. The composition of which is:

| CRI Family Kit | |
|---|------------------|
| 3 Mattresses | 5 Blankets |
| 3 Sleeping mats | 2 Jerry can |
| Diapers | Sanitary napkins |
| 1 Kitchen Set | 1 Hygiene Kit |
| 1 Plastic Sheet | |
| Winter: 1 extra plastic sheet +1 family winter clothing kit | |
| Supplementary Items: (Targeting Those Most in Need) Solar Lamps, Sleeping Bags, Winter Jackets , Thermal Underwear | |



2,493,994 Beneficiaries

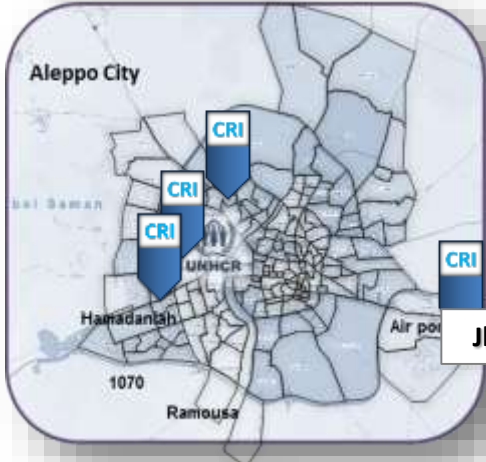
Valid as of 14/12/2016



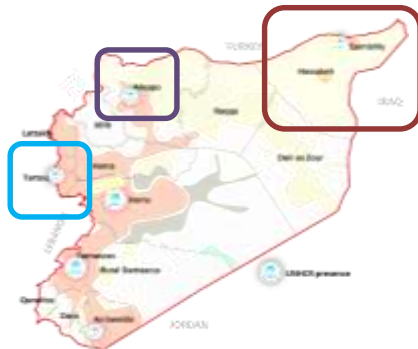
CORE RELIEF ITEMS (CRIs) in 2016

Main Locations reached with CRIs between 5 Dec to 12 Dec 2016

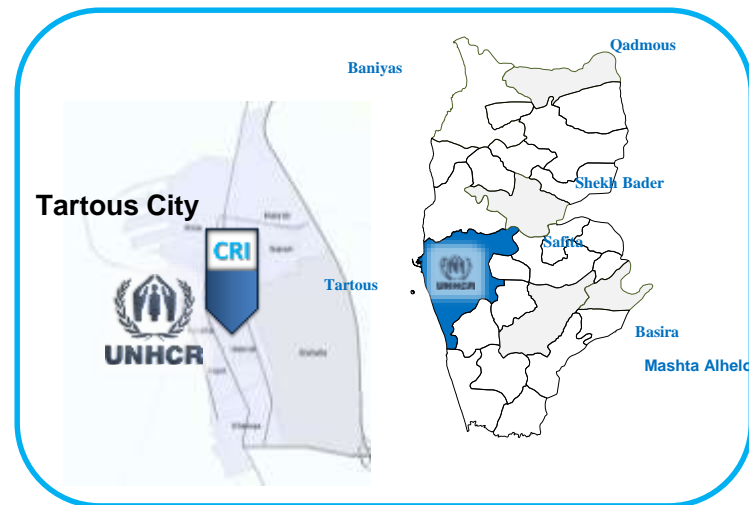
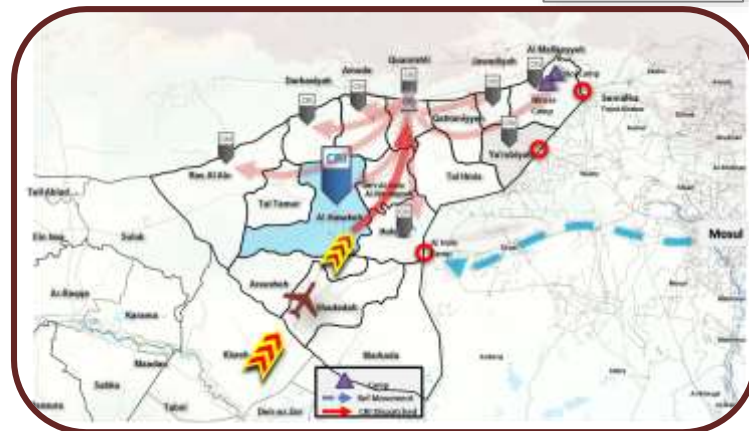
Aleppo

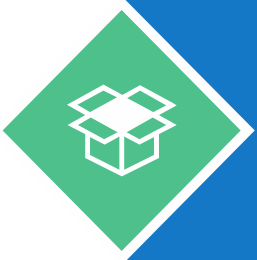


Jbreen



Al Hassakeh





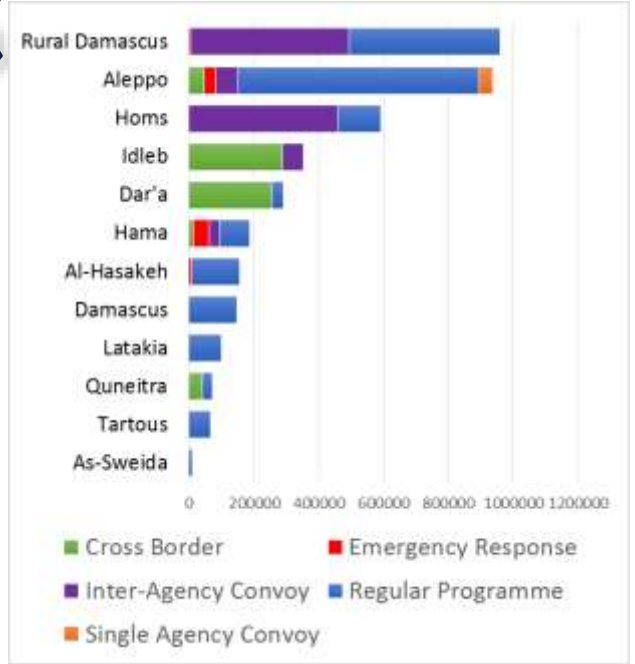
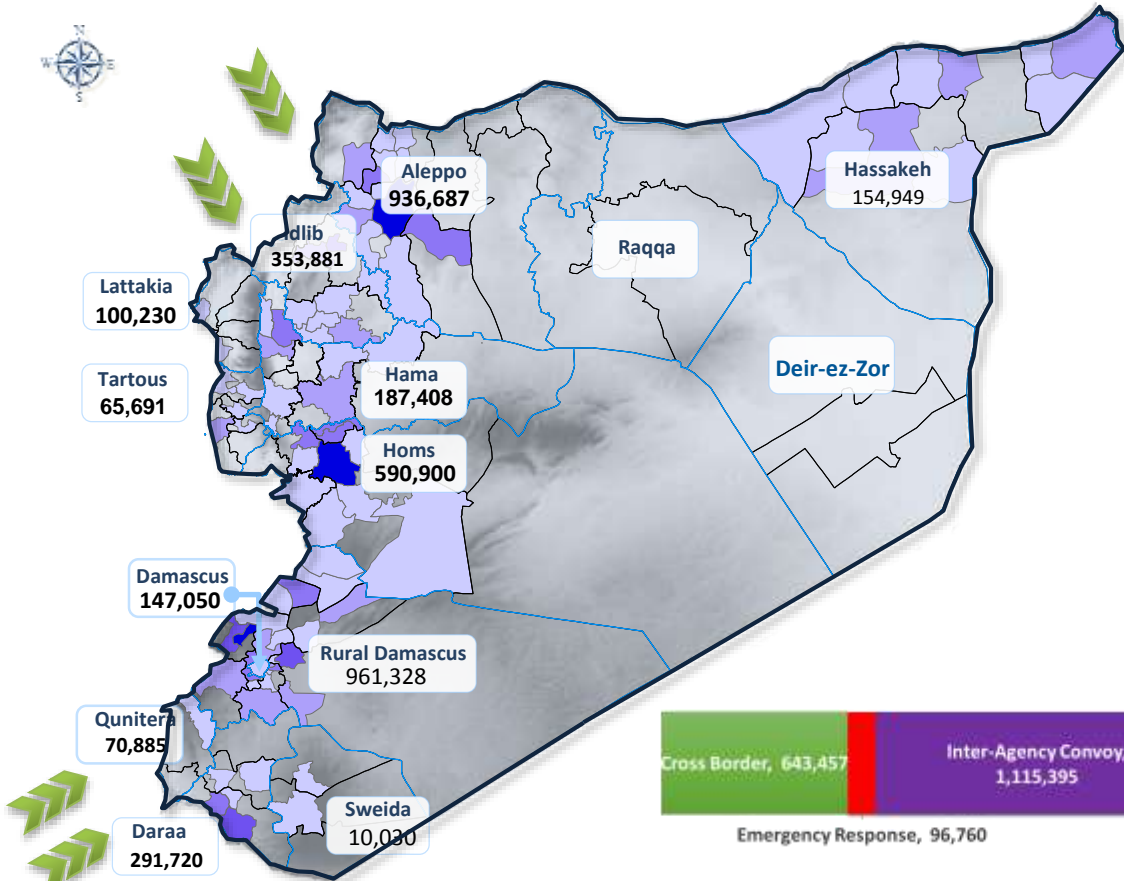
CORE RELIEF ITEMS (CRIs) IN 2016



UNHCR Jan – Nov 2016

CRI Distribution in 2016, amounts to **3,870,759** individuals

3,870,759 Beneficiaries of CRI by location



Locations approximate. For graphical representation only. Not for detailed planning. Boundaries and locations shown do not imply official acceptance by the United Nations



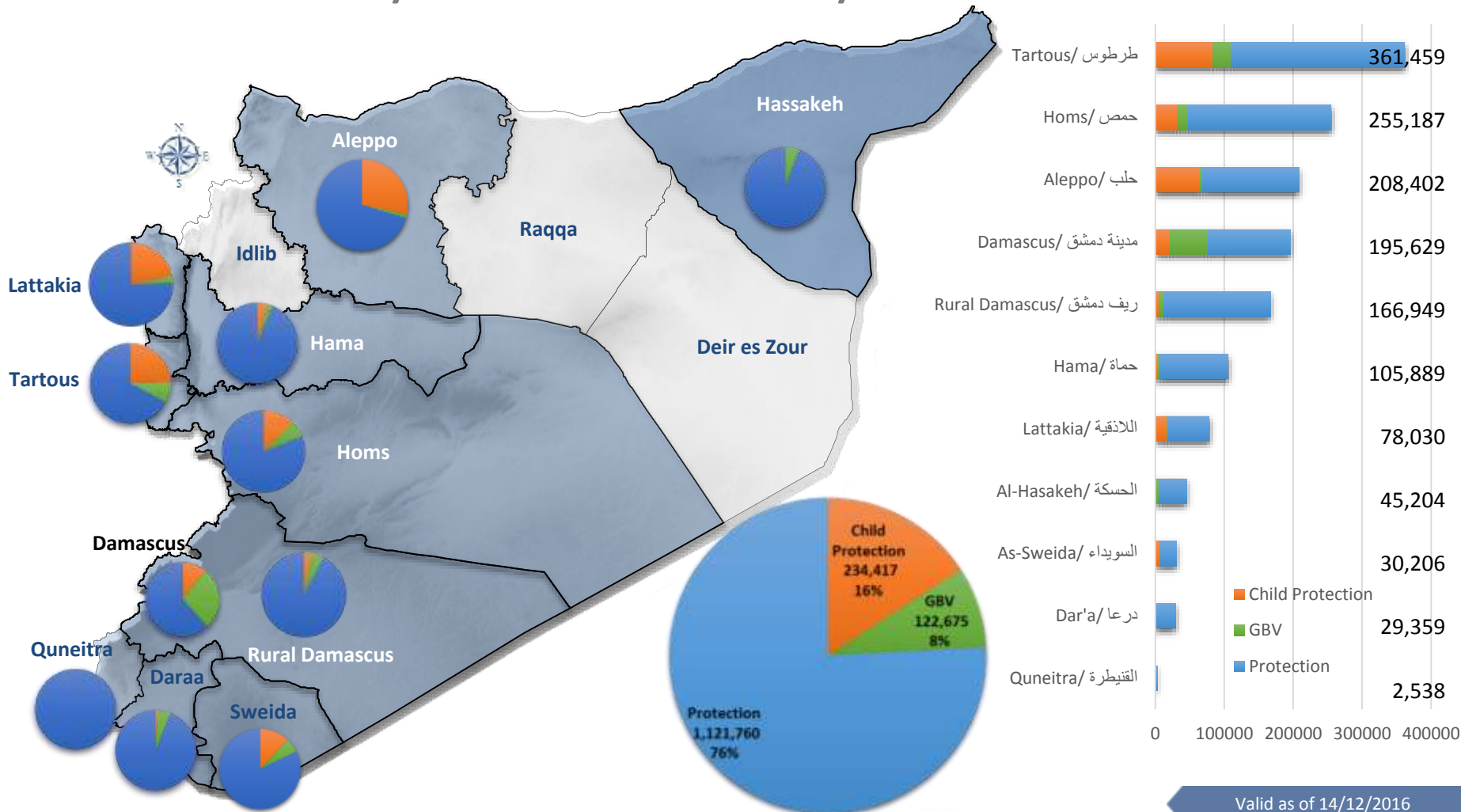
UNHCR Distributed **5,091,603** CRIs



PROTECTION IN 2016

1,478,852 Beneficiaries

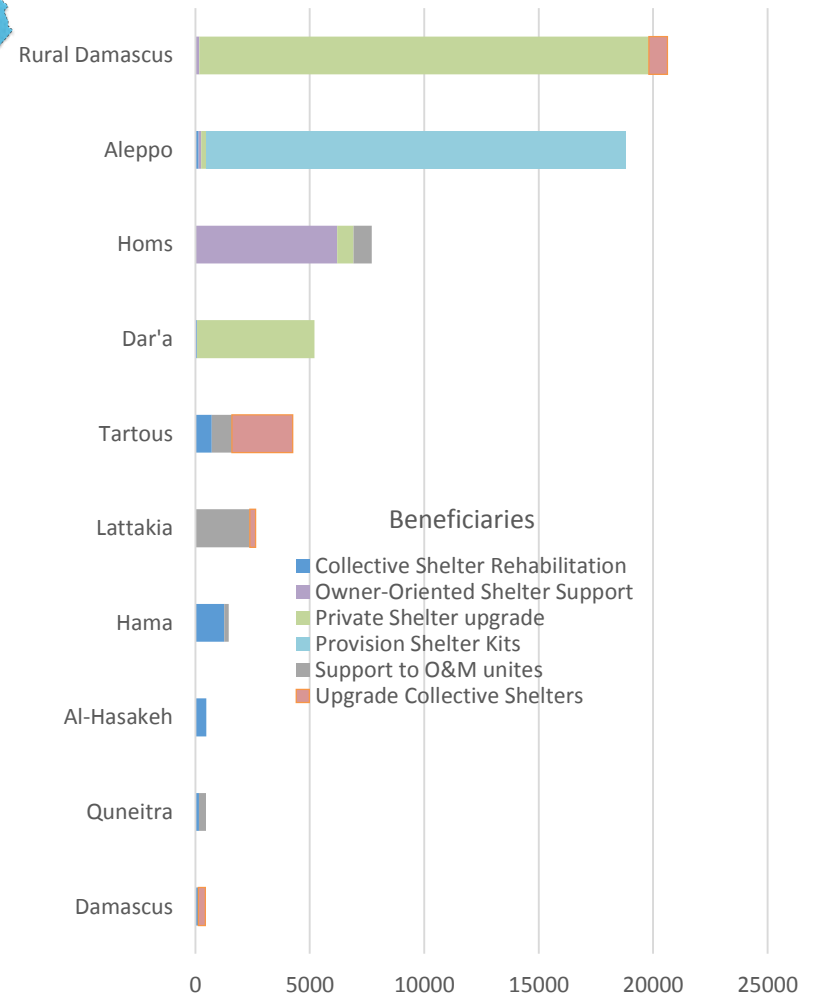
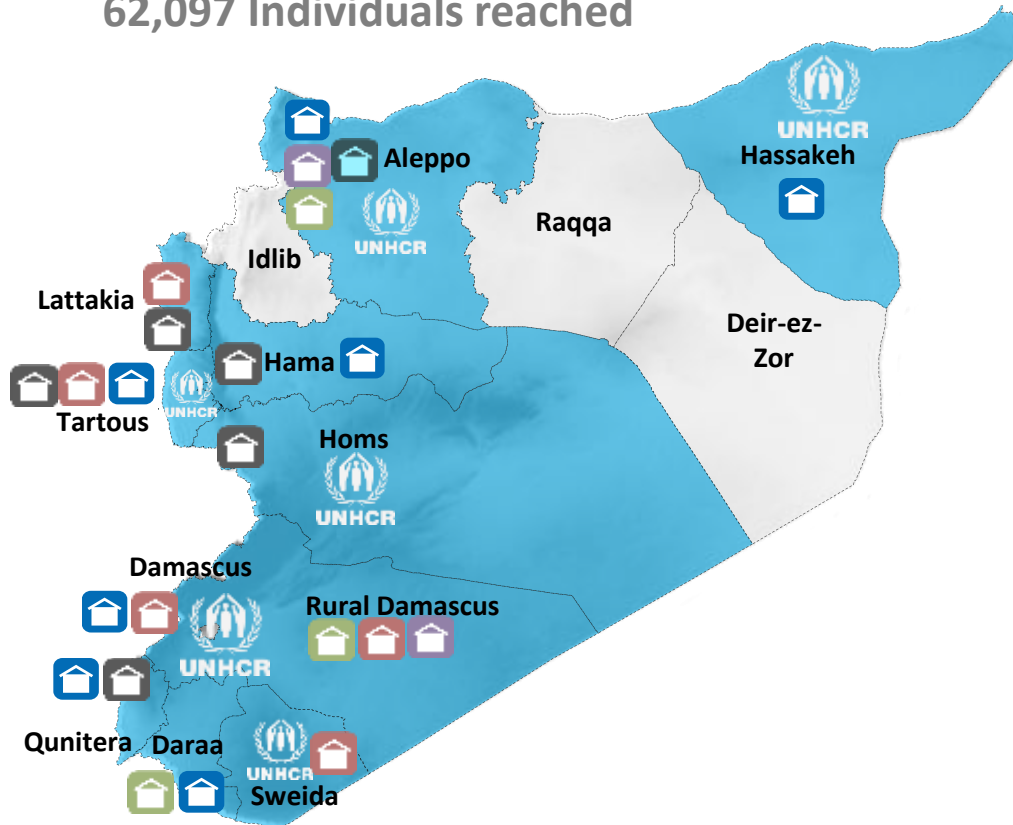
Reached by Protection & Community Services Interventions





UNHCR SHELTER Activities 2016

62,097 Individuals reached



62,097 Individuals

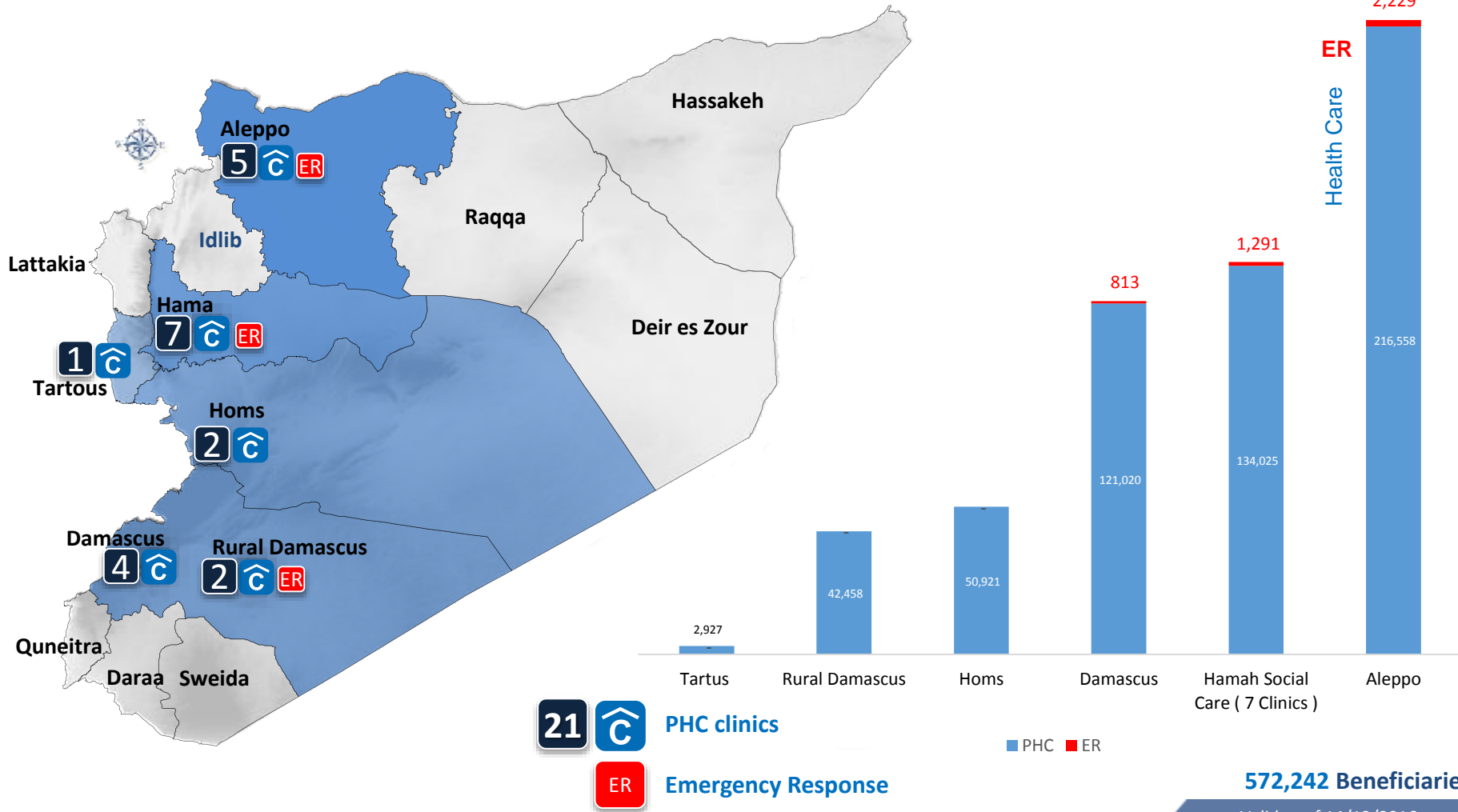
Valid as of 14/12/2016

| Activity | Individuals Reached |
|-----------------------------------|---------------------|
| Collective Shelter Rehabilitation | 2,972 |
| Owner-Oriented Shelter Support | 6,462 |
| Private Shelter upgrade | 25,719 |
| Provision Shelter Kits | 18,328 |
| Support to O&M unites | 4,550 |
| Upgrade Collective Shelters | 4,066 |
| Grand Total | 62,097 |



HEALTH IN 2016

572,242 Beneficiaries Have access to Health Care



572,242 Beneficiaries

Valid as of 14/12/2016

Al-Nabek Clinic (rural Damascus) & Alzahra Clinic in Homs were handed over to IMC.



WINTERIZATION PROGRAMME 2016



956,221 Beneficiaries assisted

(191,225 Families) With 794,858 items

