

KR-I Urban Profiling 1/2

Background: A lot of information is available on the Syrian refugees and Iraqi IDPs residing in camps in the KR-I. However, much less is known about those residing in urban areas (more than 80 percent of IDPs and 60 percent of the refugees). Also, there is a lack of information on the needs of the host communities, living alongside these displaced populations.

In order to address this information gap, UN and Governmental agencies have decided to conduct three profiling exercises in the KR-I Governorates (Erbil, Sulaymaniyah and Duhok) to facilitate an analysis of the out of camp displacement situations and a comparative analysis of displaced (**Syrian Refugees and Iraqi Internally Displaced Persons - IDPs**) and host community. UNHCR together with the authorities in each of the Governorates are leading the exercises, while the Statistics Office of each Governorate is collecting the data. The Joint IDP Profiling Service (JIPS) is providing technical support. The project has been funded by UK-AID.

The objectives: To consider the three categories of the population (Refugees, IDPs and Host Community) as part of an overall picture and providing evidence-based recommendations to the humanitarian/development community and the Governorates to inform longer term planning and advocacy.

The **themes covered** by profiling were selected following several consultations with humanitarian, development and Governorate actors. They include basic demographics, employment and livelihoods, access to services and housing, migration history, future plans including return, social cohesion, and human and institutional resilience.

Information for the profiling is collected via:

- Household surveys, taking an average sample size of about 1200 households in each Governorate;
- Focus group discussions to address topics like social cohesion and questions raised by the survey findings; and
- Key informant interviews and a desk review to contextualise findings, compare with previous research and compile information on service



An enumerator of Erbil Statistics Office (ESD) is using an on-line data collection tool for the first time during the interviews for the household survey for profiling. Dec. 2015, Erbil, KR-I. ESD/Mazin Muhammed

availability and capacity in the targeted areas.

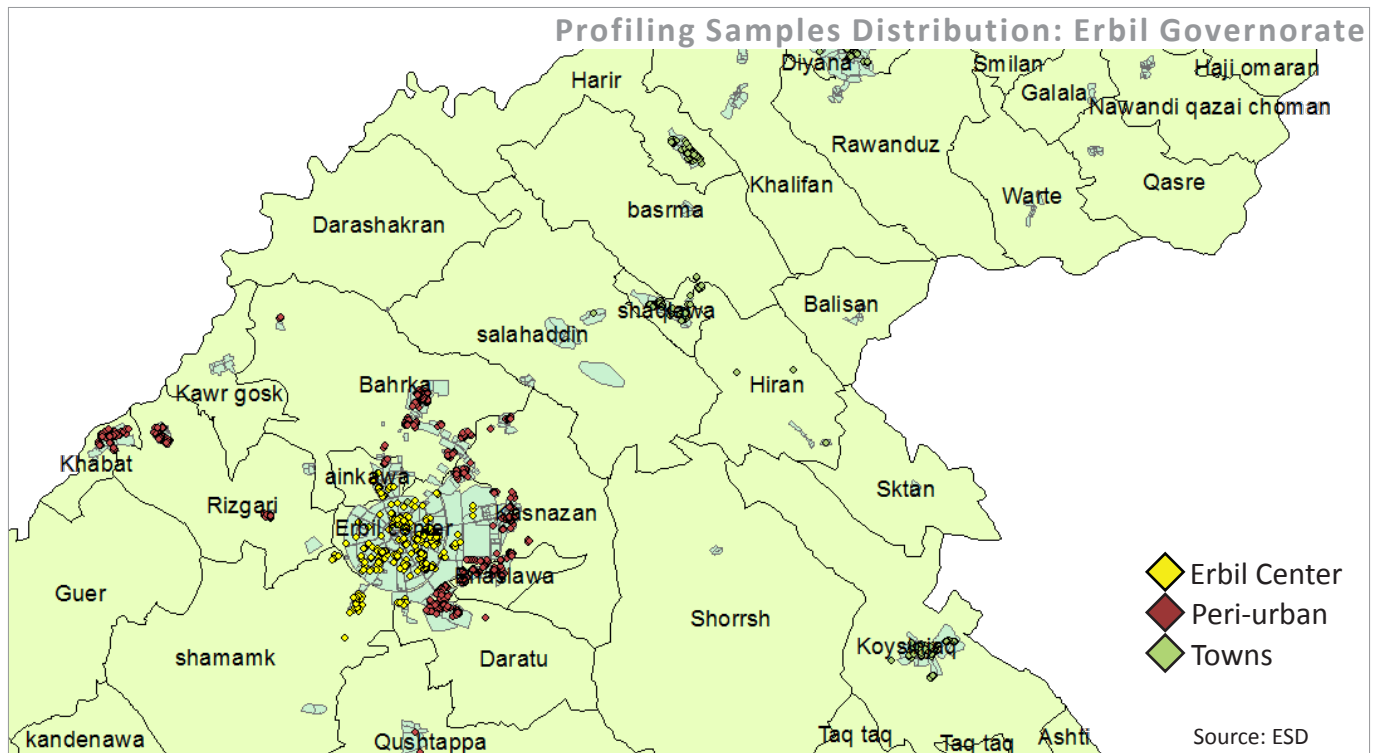
Analysis and findings: Erbil Governorate Example

The Erbil Statistics Directorate has conducted the household (HH) survey using a questionnaire (80 questions).

A total of 1,163 households were interviewed: 370 to refugee HH, 403 IDP HH and 390 HH in community households, making the sample statistically representative for each population group.

Coverage areas: In addition, the profiling exercise includes the main urban areas in Erbil governorate. Three different geographical stratas were taken in order to allow a more nuanced and informative statistical analysis. These stratas are plotted in the map below and are categorised as follows:

- Erbil centre, which includes the central parts of the city;
- Erbil peri-urban areas, which includes the neighbourhoods at the perimeter of the city, such as Kasnazan, Daratu, Bnslawa and Khabat.
- Towns, which include other urban areas spread within the governorate, such as Koya, Shaqlawa, Harir and Soran.



Profiling exercise as a collaborative and capacity sharing process. The themes explored collaboratively by UN and Governmental actors fills information gaps of both humanitarian and Government institutions;

- UN and Governorate discuss the preliminary findings and the recommendations are jointly developed.
- The profiling technical work involved several partners in collaboration with the support of JIPS; in Erbil, it included Erbil Statistics Directorate (ESD), UNHCR Information Management Unit (IM) and Erbil Refugee Council (ERC), while the focus group discussions were organised and conducted by ERC and UNHCR;
- This daily collaboration in this interagency Technical Working Group resulted in the sharing of knowledge and capacity. New data collection methods were introduced to the ESD, as UNHCR provided training on data collection and processing with mobile devices and also on the use of an on-line data collection tool.
- The focus group discussions will be conducted by experienced UNHCR Erbil field unit facilitators together with ERC staff which also raises the capacity of ERC staff.

The final report of the Erbil, with recommendations, is planned for end of March 2016, Duhok and Sulaymaniyah by end June 2016.

Profiling Technical Working Group Agencies: ESD, ERC, UNHCR IM Unit and JIPS.