

Environment and Energy

Ranya Sherif

Environment and Energy Sector Lead

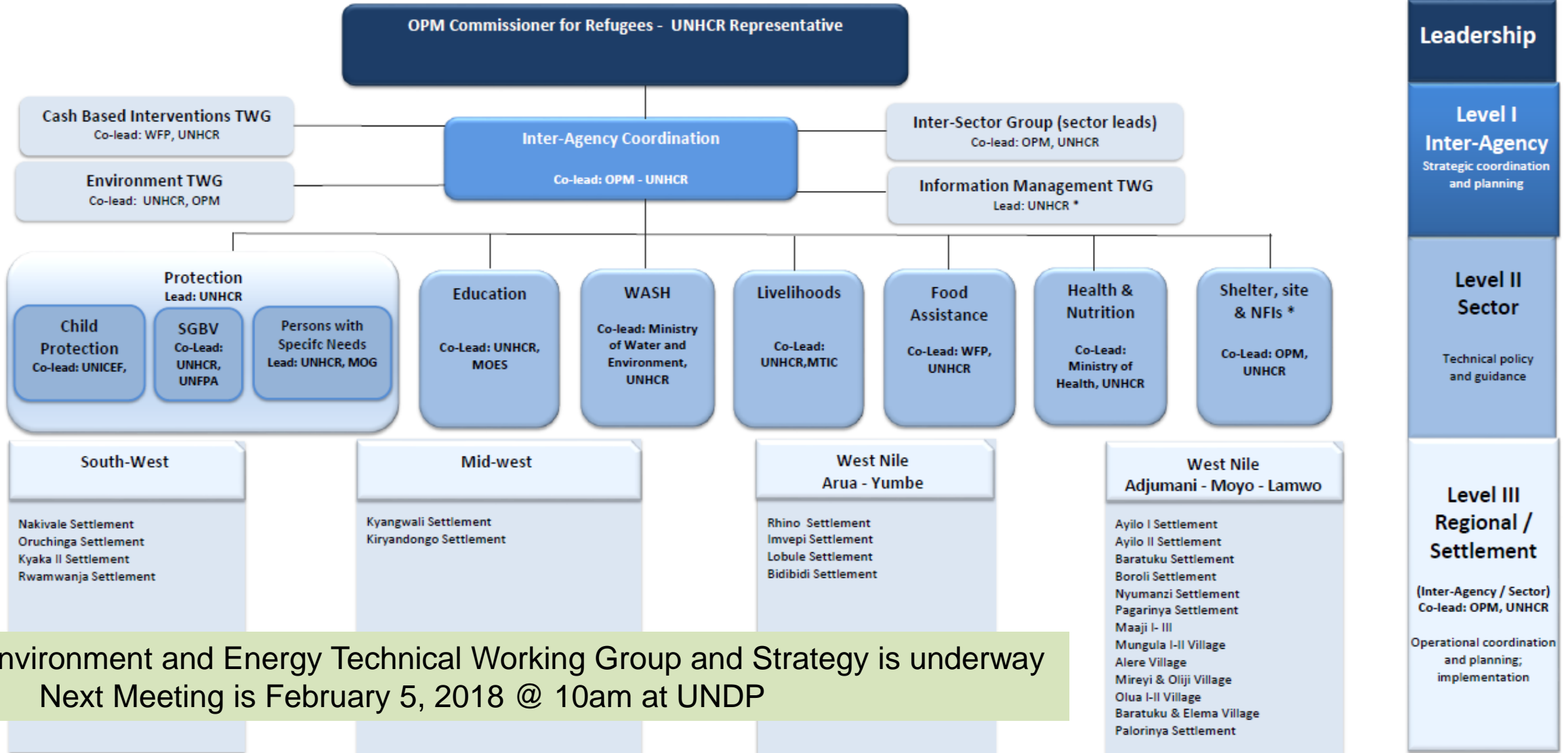


UNHCR

United Nations High Commissioner for Refugees
Haut Commissariat des Nations Unies pour les réfugiés



UGANDA: Refugee Response Coordination Structure



Environment and Energy Technical Working Group and Strategy is underway
 Next Meeting is February 5, 2018 @ 10am at UNDP

Environment and Energy - Shelters

- Environmental Considerations in Shelters
 - Sustainable source of construction materials especially poles and bricks (that require water and energy)
 - Sustainable energy source for households, reception centres, and institutions
 - Avoidance/prevention of indoor air pollution from cooking
 - Adequate ventilation, proper kitchen facilities



Site Planning – Environment and Energy

- Key Environmental Considerations in Site Planning
 - Environmental Impact Assessments and Management Plans – protected areas and zoning for better natural resource management – wetlands, woodlots, nurseries, agricultural, water source protection, etc.
 - Planning should be conducive to access to sustainable services: WASH, schools, health



Village Layout with Agricultural Land

CRITICAL DESIGN DRIVERS

- Village settlements (each village accommodates 650 - 700 refugees,)
- Definition of community access roads aligned following crest of topography
- Social services at various levels, village and clusters (# villages)
- Each Family receive a shelter plot 30m X 30 and 30m X 30m agricultural land.
- Agricultural land extends in between refugees ' villages)
- Streams buffered 100m

Source: Palabek Site Plan

Questions?

