

DEFINITION

Communication with Communities (CwC) is an essential part of any humanitarian operation. UNHCR and partners are working to ensure that Persons of Concern* (PoC) not only have the right to participate in making decisions that affect their lives, but also receive the information they need to be protected and have access to life-saving services and support. CwC is defined as a two-way communication between PoC and humanitarian actors.

* PoC to UNHCR in Lebanon include refugees, asylum seekers, stateless persons and affected host communities



Information is disseminated in Lebanon with the ongoing support of partners and hundreds of outreach volunteers.

NEWS

Humanitarian Innovation Lab (HiL) project: A dedicated team of developers are working to create technical tools for CwC (Facebook dashboard, chatbot, app for cash and food assistance etc).

Inter-agency call center with UNICEF and WFP for queries on cash, food, winter assistance and emergency protection to be launched in mid 2018.

WHAT INFORMATION?

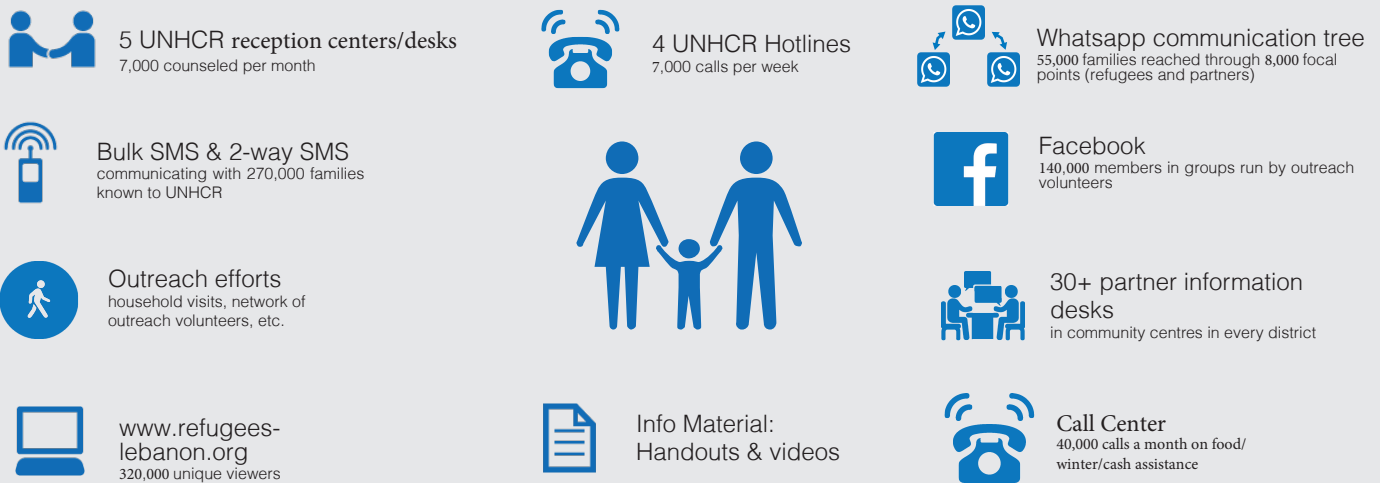
Refugees need information about:



2018 PRIORITIES

1. Intensify on-going awareness and counselling sessions in-person and over the phone to accompany the available information
2. Promote timely access to appropriate services
3. Involve communities in the planning and implementation of activities that affect their lives
4. Constantly further the use of modern technology and online tools (i.e. websites, mobile phones and social media networks)

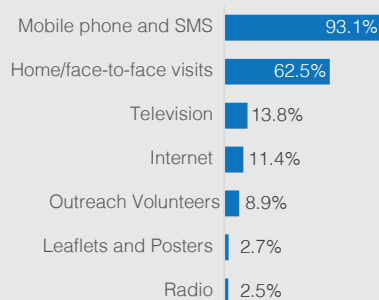
TOOLS: HOW REFUGEES ACCESS INFORMATION AND GIVE FEEDBACK



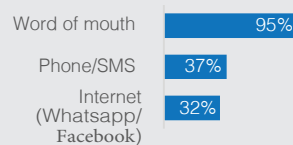
COMMUNICATION SURVEY

A Communication Survey was conducted by phone in 2015, surveying 2,000 refugees.

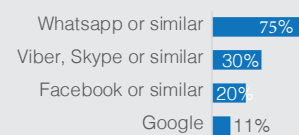
How refugees want to receive information



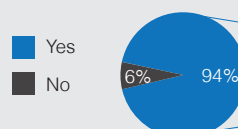
Means of sharing information



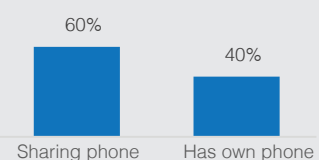
Internet sources



Has a mobile phone



Sharing phone with family/others



ISSUES TO BE ADDRESSED WHEN COMMUNICATING WITH COMMUNITIES

Creating easy-to-understand messages

- Some UNHCR humanitarian programmes are complex and are constantly being updated with new plans and procedures (i.e. basic assistance and health).
- Assistance is provided in multiple forms (ATM cash assistance, vouchers, in-kind) depending on needs and location constraints.
- The criteria for eligibility are diverse (e.g. economic vulnerability, protection concerns, dwelling type or geographical location).
- With more than 90 organizations operating in the country, it is difficult to ensure harmonized key messages are given to PoC by all humanitarian workers.
- National and local policies affecting the daily life of PoC must be explained in simple terms.
- Consistently reaching refugees with information about their individual cases (such as resettlement opportunities, civil documentation, etc.)

Maintaining permanent contact at the individual level

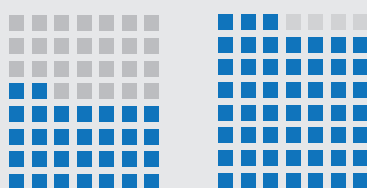
- Living in hard to reach areas that cannot be visited by humanitarian workers on a frequent basis (security issues, etc.)
- Frequently changing phone numbers and location
- Cannot read or understand the information in messages
- Lack of phones or sharing phone with other community members
- Limited access or do not know how to use the internet and social networks (Facebook, Whatsapp)

THEMATIC QUESTIONNAIRE: ACCESS TO COMMUNICATION TOOLS

A UNHCR survey on practices of communication was conducted between January and February 2016 with 1,929 persons.

The survey shows a significant expansion in the use of online and mobile communication in exile. This has become the current lifeline for access to information for refugees. Refugees opt for the cheapest options to get access to these communication tools, such as sharing mobile phones with the cheapest mobile subscription or home-based wireless costs among several families, or going to community centres or internet cafes. The majority use social applications like Facebook and WhatsApp to communicate with each other, their families in Syria/elsewhere and to receive and, most importantly, share information on services and assistance. In turn, humanitarian partners use these tools on regular basis to communicate on essential services, as they are an efficient and low-cost way to reach out to large numbers of people, including those living in remote areas.

% With access to a mobile phone



54%

Previously in Syria

92%

Today in Lebanon

% With access to the internet



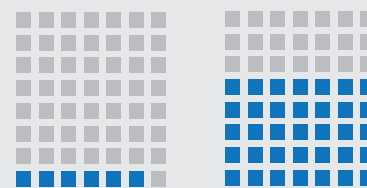
10%

Previously in Syria

75%

Today in Lebanon

% Using of online applications (Facebook, Whatsapp, etc.)



12%

Previously in Syria

73%

Today in Lebanon

% Possessing an ATM bank card



2%

Previously in Syria

68%

Today in Lebanon

■ ATM card

■ No ATM card

% Who received information through leaflets or brochures in Syria



2%

Received information through leaflets/brochures in Syria

% Who want to receive information through leaflets or brochures in Lebanon



3%

Want to receive information through leaflets or brochures in Lebanon