

Aleppo: Sector partner's relief aid distribution caters returning families in the old city of Aleppo. Around 2,900 returning families were registered at the distribution point run by Al-Birr and Al-Ihsan Charity in Joub Al Koubbeh in the old city of Aleppo. UNHCR distributed rechargeable fans for all beneficiaries in addition to its usual Core Relief Items.

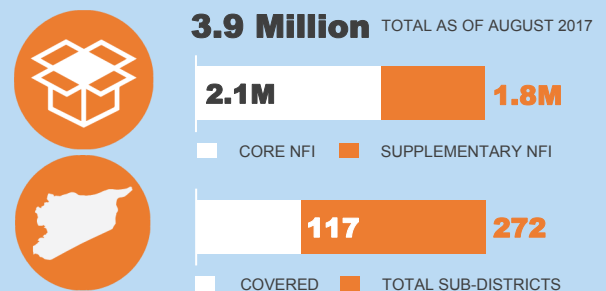
© UNHCR Syria / H. Marouf

KEY POINTS

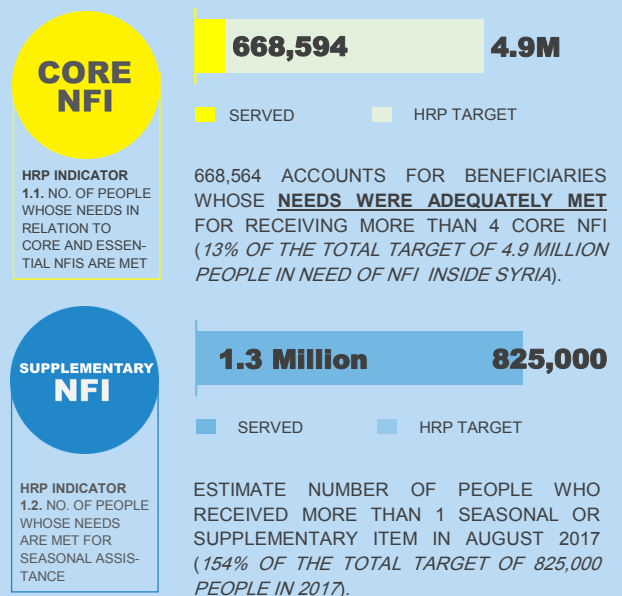
- UNHCR has secured the approval to conduct a household-level country-wide NFI needs assessment. The activity is the first large scale attempt to gather data at household-level throughout the country. This level of detail will help UNHCR acquire a more comprehensive and accurate depiction of the humanitarian situation of its people of concern. Other sector partners are also participating in this month-long activity.
- In Aleppo, sector partners participated in the assessment mission in Al Khafseh where returnees are nearly 50% of the total displaced population from this area. Findings show, that this location, where no distribution has previously taken place, is in a need of the full range of NFIs (mission report is available upon request).
- The sub-national working group in Aleppo conducted its regular sector meeting in August. Among the pressing issues that were discussed include the continuing huge demand for mattresses, non-delivery of NFI assistance to severely affected population in Handarat Camp and Bagara, limited partners in eastern Rural Aleppo, and continuing presence of remnants of war, especially in rural Aleppo (minutes of the meeting is available upon request).
- The IM team of the sector participated in the Data Analysis Workshop in Amman, Jordan from 27th to 31st of August. Based on the datasets that were gathered through the Multi-Sectorial Needs Assessment and REACH Assessment, the team updated the severity scale and people in need per sub-district. These key results and findings will contribute to the development of Humanitarian Needs Overview for 2018.

NUMBERS IN BRIEF

TOTAL NFI DISTRIBUTED



BENEFICIARIES ADEQUATELY SERVED



OVERALL REACHED BENEFICIARIES



GAPS AND CHALLENGES

- Widespread insecurity, challenging physical access and rigorous bureaucratic procedures and approval limit provision of adequate and regular humanitarian assistance especially to those who live in besieged and hard-to-reach areas;
- Absence of age and gender disaggregated information of population in need unable the sector to accommodate and target specific needs;
- Logistical constraints especially during inter-agency convoy such as road blockage, presence of checkpoints, presence of threats, and proximity to active front lines (i.e. Ar Raqqa) continue to hamper rapid distribution,;
- Lack of actual data on distribution recipients prevent the sector to better measure the actual reached and served beneficiaries;
- Limited and irregular monitoring of distribution due to insecurity and sensitivities compromise the ability of the sector to assess the impact of its assistance and better inform future planning;
- Absence of clear and effective feedback mechanism from population in need due to information gathering sensitivities unable the sector to better determine the efficacy of its effort;
- Lack of income-generating activities to provide the necessary financial means continues to hamper access to basic household items among the most vulnerable population in need;
- Diminishing active participation among sector members affects coordination and the overall sectorial reach;
- Inexact coordination structure impacts the level of efficiency in coordinating sectorial response for interagency convoys.
- Lack of reliable consolidated information for interagency convoy reach affects the sector's ability to determine the extent and impact of its convoy contribution;
- Insufficient number of detailed and comprehensive assessment makes it difficult for the sector to shift its response priorities from distribution of basic essential NFI items to provision of supplementary items.
- Decreasing number of local NGOs authorized to partner with UN agencies particularly in severely affected areas limit the extent of humanitarian response (i.e. Ar Raqqa).
- Lack of adherence to agreed distribution standards (i.e. UNHCR solar lamps) affects the quality of NFI response (i.e. Lattakia and Mashta'a Al-Helou).

CRISIS BACKGROUND: *The crisis in the Syrian Arab Republic that started in March 2011 has transformed into a complex emergency that led to 6.3 million IDPs and 4.8 million Syrian refugees. The 2017 Humanitarian Needs Overview reported that around 13.5 million people are in need of humanitarian assistance of which around 5.8 million people need to receive essential household items and other multi-sectorial assistance as they continue to live in an unsafe and uncertain environment. The degree of resilience and positive coping mechanism of the affected population have gradually reduced due to the protracted nature of the hostilities. Purchasing power and the ability to provide for their basic household needs have decreased due to economic recession that left many people unemployed and the prospect of accessing essential household items has also declined due to closure of essential service providers.*



PARTNER IN FOCUS

AL BIRR ASSOCIATION



Al Birr Association is a non-government organization based in Homs governorate. Established in 1956, it is one of the oldest humanitarian charity and social associations in Syria. It was organized to extend support to the deprived population in need of social and health care. To achieve its goals, Al Birr Association consists of various committees namely educational, elderly, engineering, health, relief and shelter, social support, and voluntary work.

Working within Homs city and the countryside, Al Birr Association is among the active partners of the NFI Sector in Syria. In 2016, it was able to support around 300,000 persons in 22 communities with its NFI assistance which includes the distribution of family anti-mosquito net, blankets, floor mats, hygiene kits, jerry cans, and stoves. To ensure complementarity of support, Al Birr Association has been working closely with other humanitarian organizations including UN agencies such as The UNDP, UNICEF, UN-Habitat, UNHCR, OCHA, and WFP.

To date, there are around 800 employees in the association working on various projects.

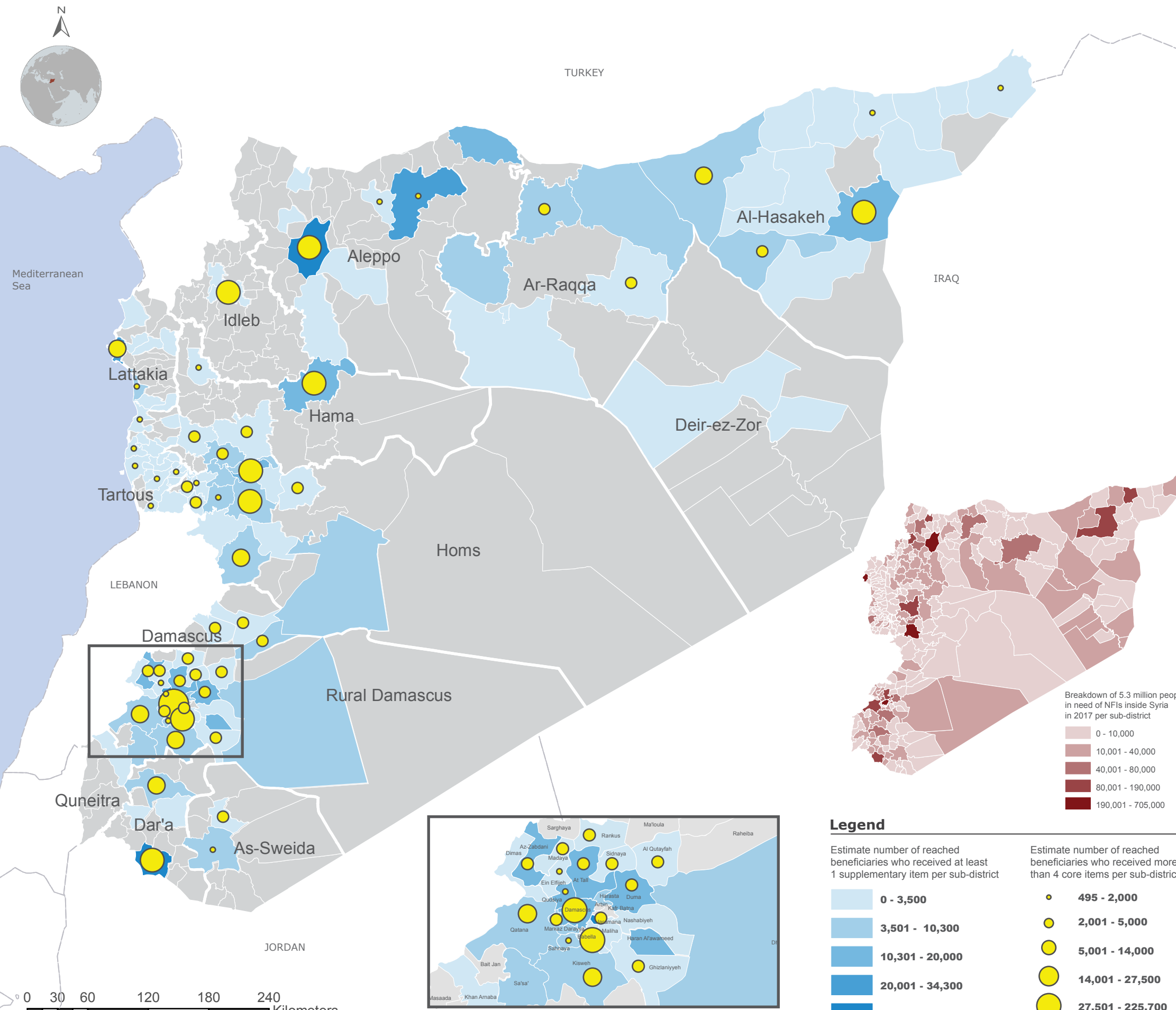
NFI Sector Coordination Team

Joel Andersson, Senior NFI Sector Coordinator (anderssj@unhcr.org)
 Zina Alkhiami, NFI Sector Field Associate (alkhiami@unhcr.org)
 Muhammad Shahzad, IM Officer (shahzadm@unhcr.org)
 Corazon C. Lagamayo, IM Officer (lagamayo@unhcr.org)
 Maha Shaban, IM Associate (shabanm@unhcr.org)
 Ashraf Zedane, IM Associate - Aleppo (zedane@unhcr.org)



SYRIA: NFI RESPONSE

Reporting Period: August 2017



BENEFICIARIES ASSISTED

CORE ITEMS

668,594

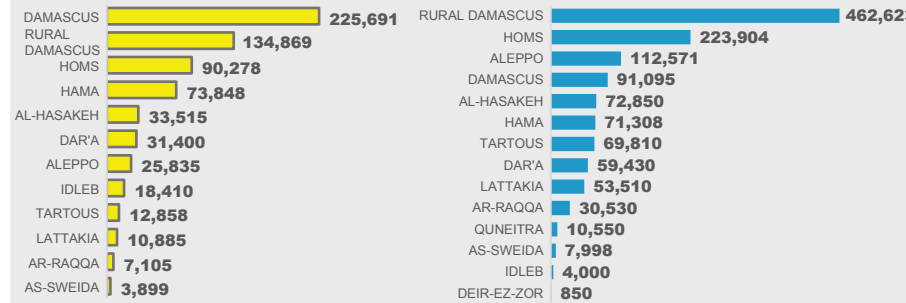
PEOPLE WHOSE NEEDS WERE ADEQUATELY MET FOR RECEIVING MORE THAN 4 CORE NFI (13% OF THE 4.9M TOTAL TARGET PEOPLE IN NEED OF NFI IN SYRIA)

SUPPLEMENTARY ITEMS

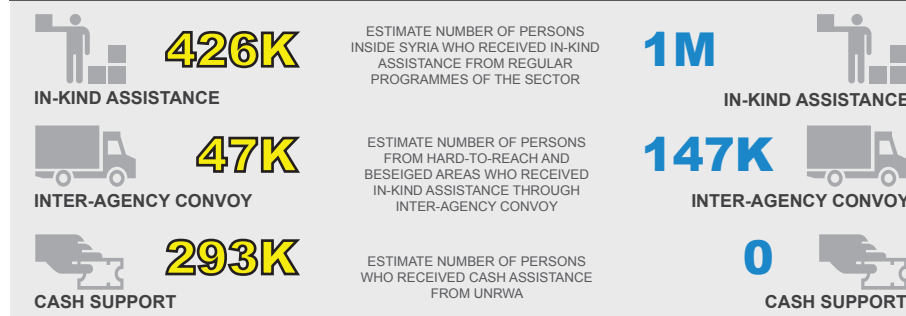
1,271,029

PEOPLE WHO RECEIVED AT LEAST 1 SUPPLEMENTARY ITEM (154% OF THE 825,000 TOTAL TARGET PEOPLE IN NEED OF SUPPLEMENTARY NFI IN SYRIA)

BENEFICIARIES ASSISTED PER GOVERNORATE

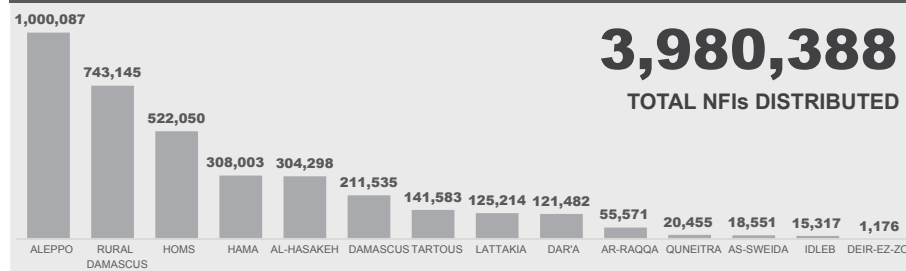


BENEFICIARIES ASSISTED BY TYPE OF SUPPORT



NOTE: Breakdown of beneficiaries per type of support does not necessarily sum up to the reported number of beneficiaries as some communities may have received more than one type of assistance.

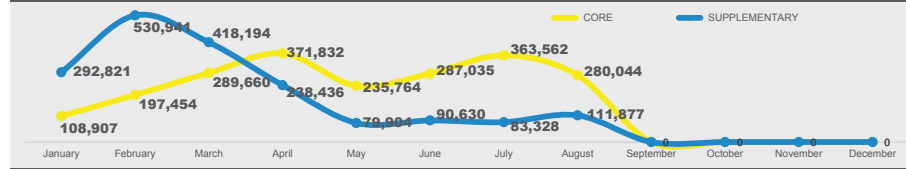
TOTAL NFI DISTRIBUTED PER GOVERNORATE



TOTAL NFI DISTRIBUTED PER TYPE



TOTAL NFI DISTRIBUTION PER MONTH



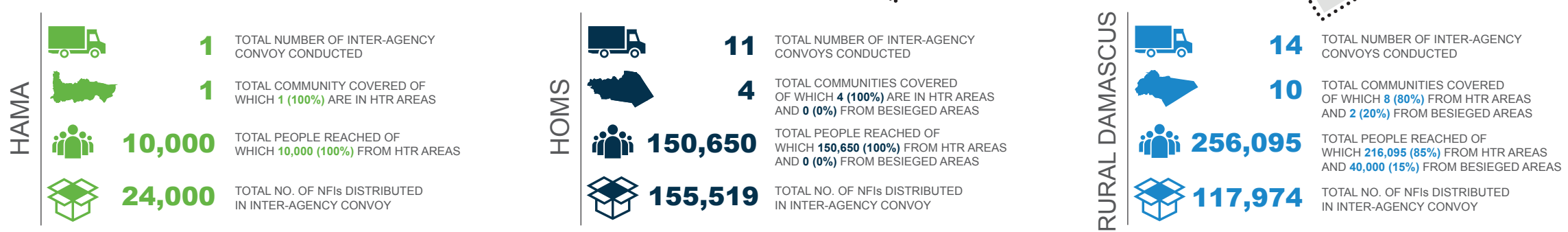
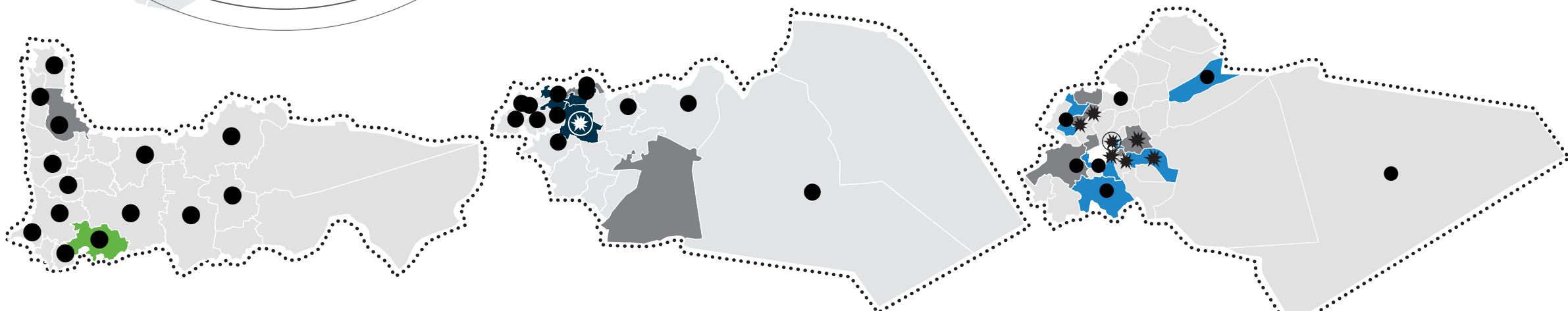
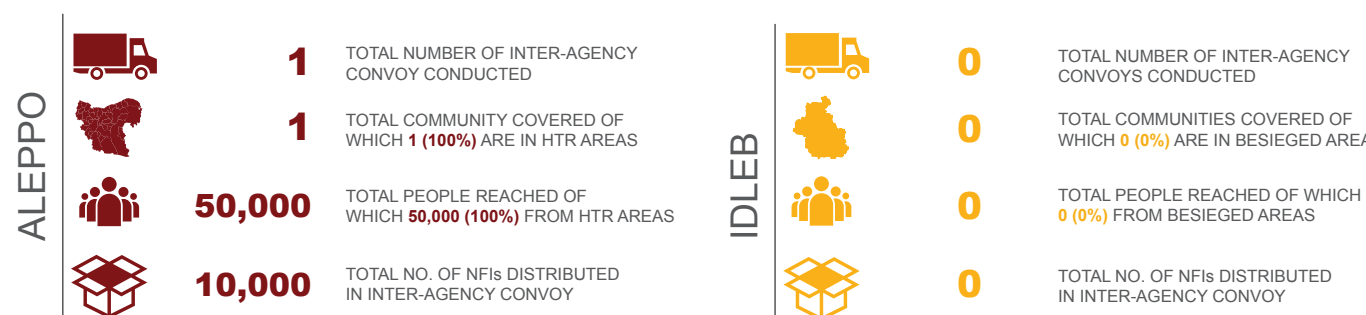
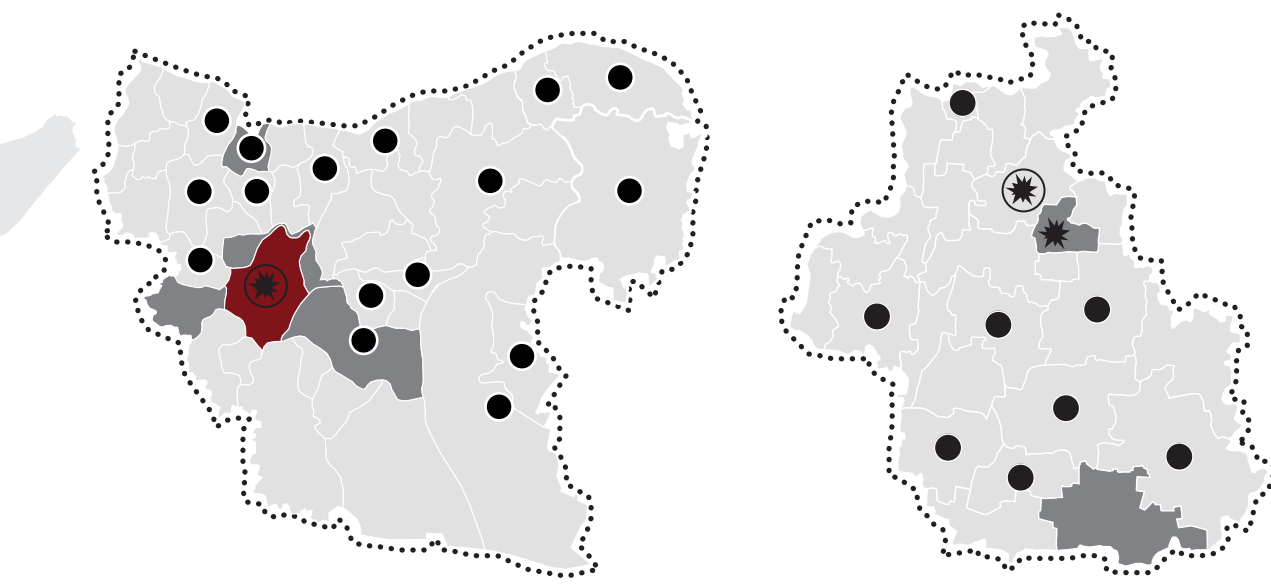
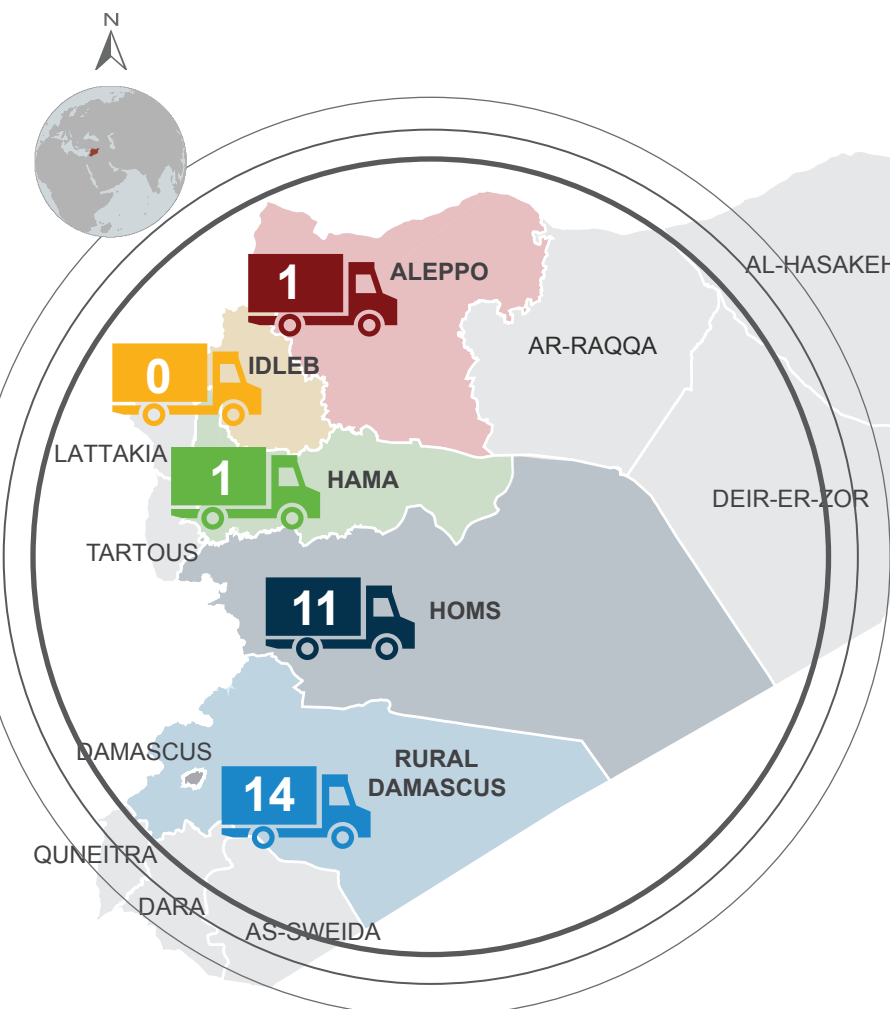
TOTAL BENEFICIARIES REACHED

5,285,693
TOTAL NUMBER OF PEOPLE WHO RECEIVED AT LEAST ONE / PART OF NON-FOOD ITEM AS OF AUGUST 2017

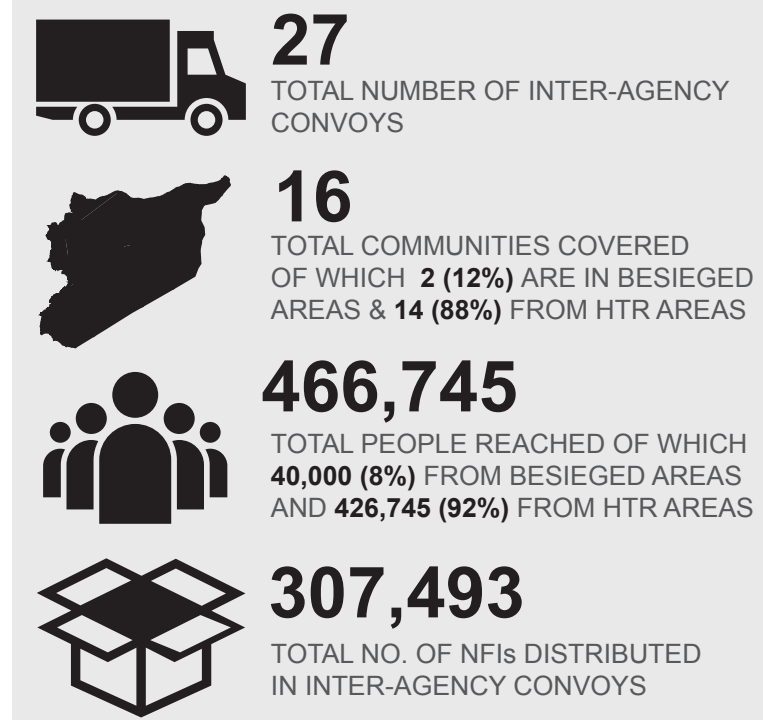


SYRIA: INTER-AGENCY CONVOY

Reporting Period: August 2017



SUMMARY



NAME OF BESIEGED AND HTR COMMUNITIES COVERED BY INTER-AGENCY CONVOY (2016-2017)

GOVERNORATE	HARD-TO-REACH COMMUNITIES	BESIEGED COMMUNITIES
ALEPPO	● AFRIN ● ALEPPO CITY ● HAJEB ● NABUL ● TALL REFAAT	
IDLEB		* FOAH
HAMA	● HARBANIFSE	
HOMS	● AR-RASTAN ● DAR KABIRA ● HOMS CITY ● KAFR LAHA ● TALBISEH ● TALDU ● TIR MAALAH	
RURAL DAMASCUS	● BABELLA ● BLUDAN ● JIRUD ● MADAMIYET ELSHAM ● QUDSIYA ● RAWDA BATRONEH ● SARGHAYA ● SUQ WADI BARDA ● YALDA ● ZAKYEH	* ARBIN * AZ-ZABADANI * BEIT SAWA * DARRAYA * DUMA * EIN TERMA * HAMMURA * HARASTA * HEZZEH * JISREIN * KAFR BATNA * KHAN ELSHIH * MADAYA * NASHABIYEH * SAGBA

LEGEND

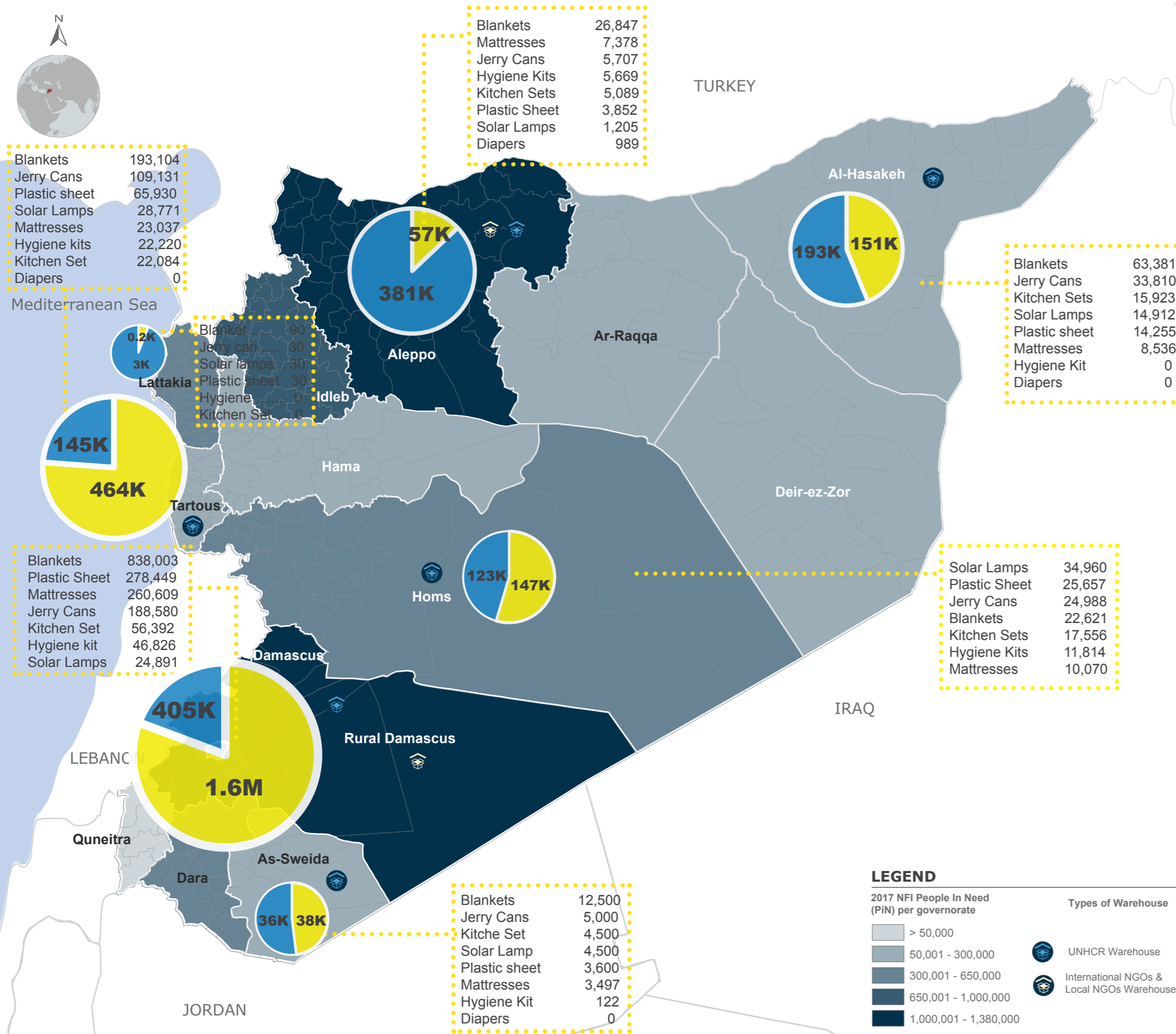
- No. of inter-agency convoys (IACs)
- No. of beneficiaries (persons) reached by IACs
- Sub-districts with besieged communities
- Sub-districts with (HTR) hard-to-reach communities
- Sub-districts with besieged and HTR communities
- No. of distributed non-food items
- Areas covered by convoy in 2016

FOOTNOTE/S:
 A. The information presented here only shows DRC, IOM, UNHCR and UNICEF convoys.
 B. One convoy is counted as one completed trip.



SYRIA: NFI STOCKPILE

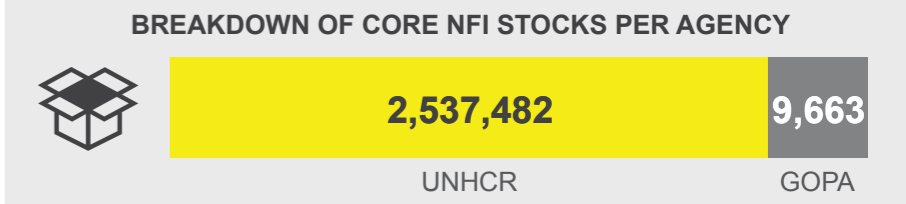
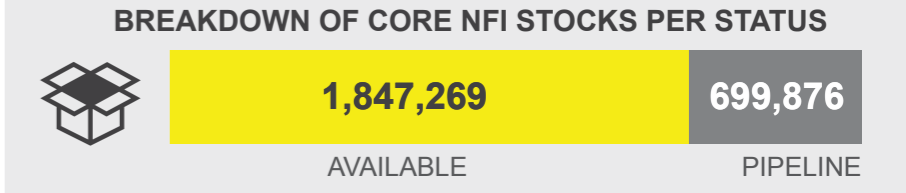
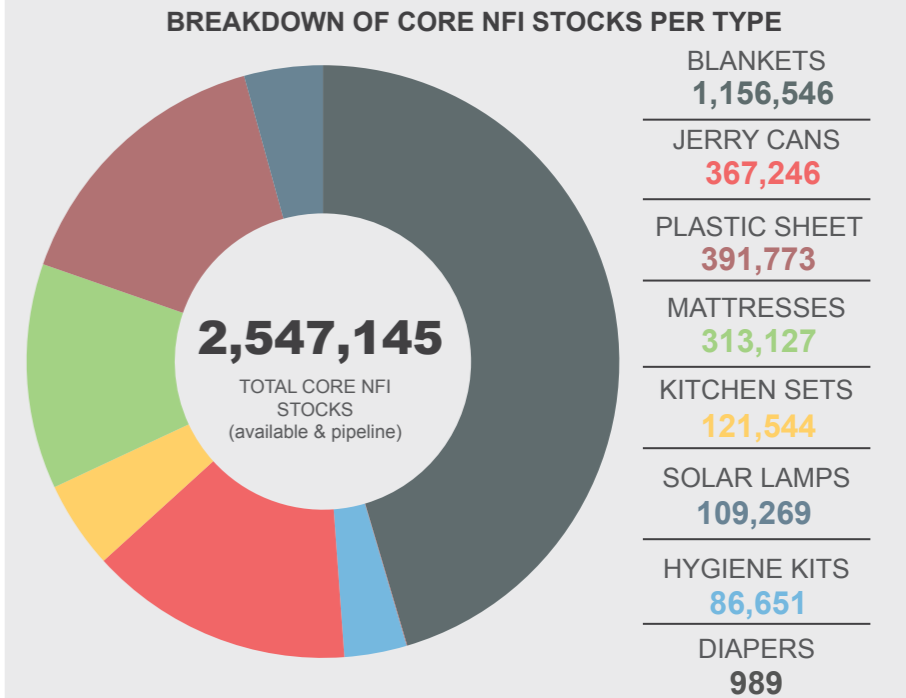
Reporting Period: September 2017



3,834,826

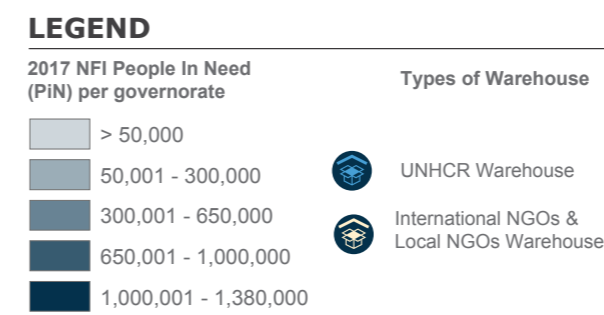
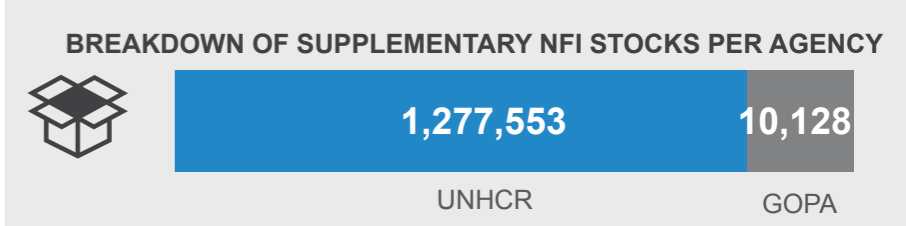
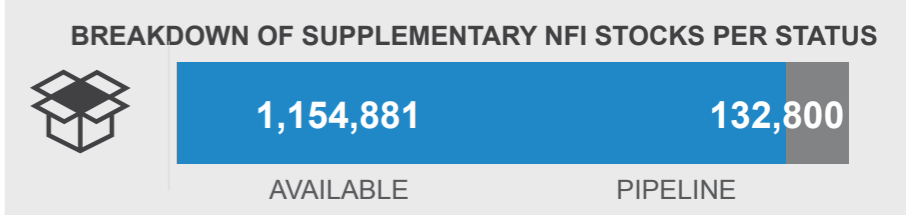
 TOTAL CORE AND SUPPLEMENTARY NFI STOCKS AS OF SEPTEMBER 2017

CORE NON-FOOD ITEMS



SUPPLEMENTARY NON-FOOD ITEMS

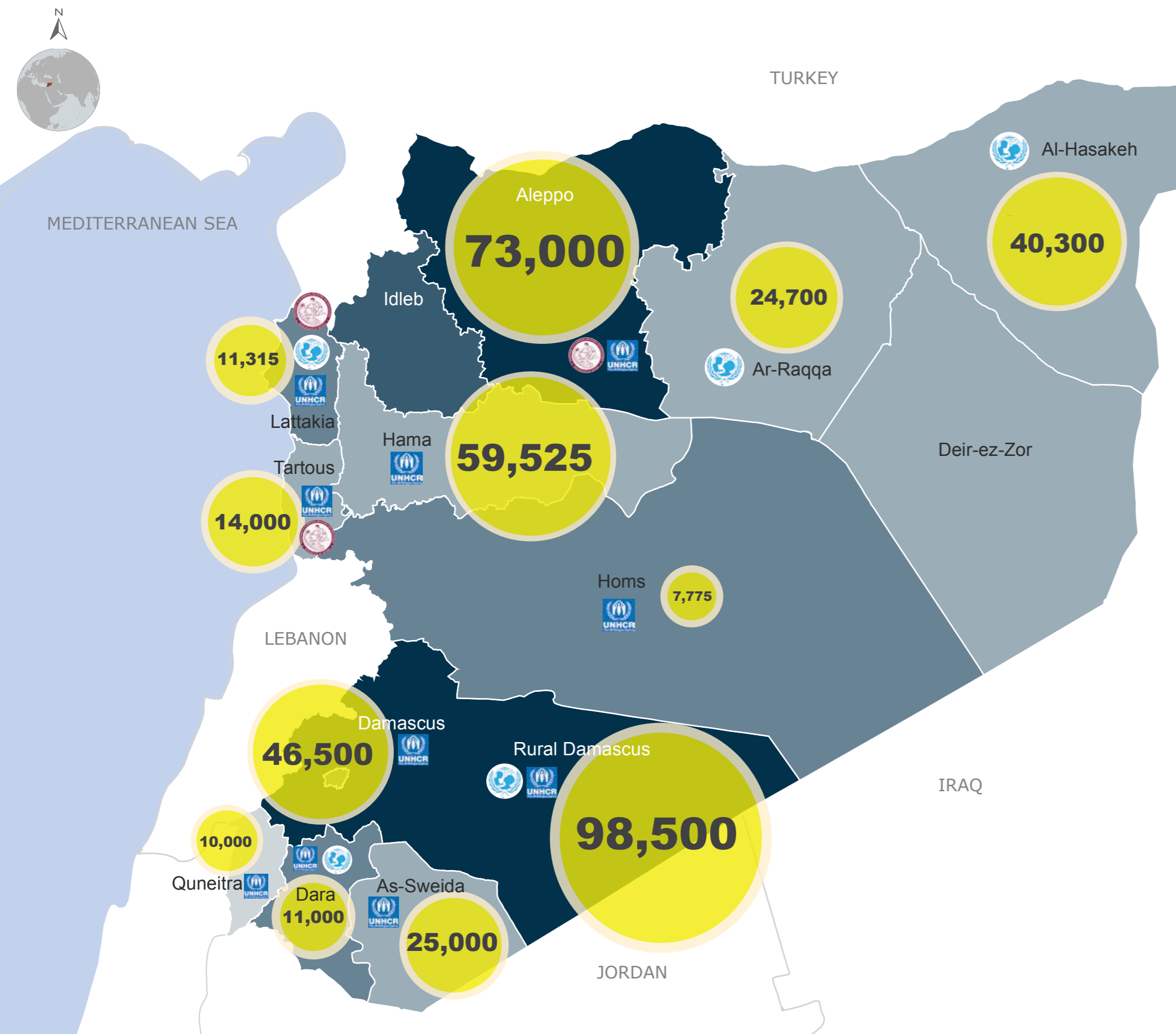
1,287,681

 TOTAL SUPPLEMENTARY NFI (available and pipeline)



SYRIA: NFI 2-MONTH DISTRIBUTION PLAN

Reporting Period: September - October 2017

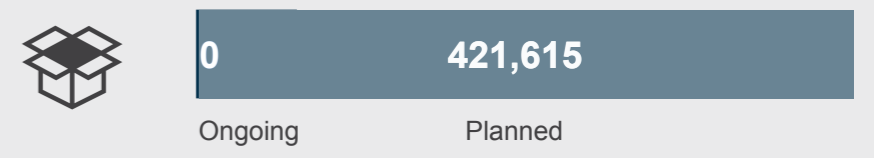


SUMMARY

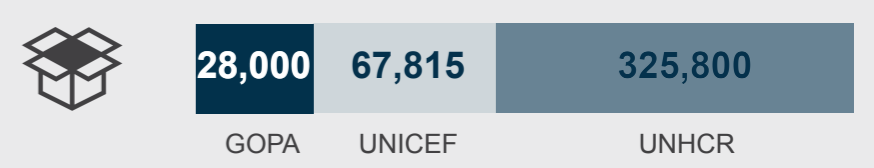


TARGET NUMBER OF BENEFICIARIES (PERSONS) FOR IN-KIND DISTRIBUTION FOR SEPTEMBER AND OCTOBER 2017 BY NFI SECTOR SYRIA HUB

BREAKDOWN OF BENEFICIARIES OF 2-MONTH PLAN DISTRIBUTION PER STATUS



BREAKDOWN OF BENEFICIARIES OF 2-MONTH PLAN DISTRIBUTION PER AGENCY



NOTE: This two month distribution plan is only tentative as factors such as access and security have impact in the actual plan implementation.

LEGEND

2017 NFI People In Need (PiN) per governorate

- > 50,000
- 50,001 - 300,000
- 300,001 - 650,000
- 650,001 - 1,000,000
- 1,000,001 - 1,380,000

- GOPA
- UNICEF
- UNHCR
- Number of beneficiaries (persons)