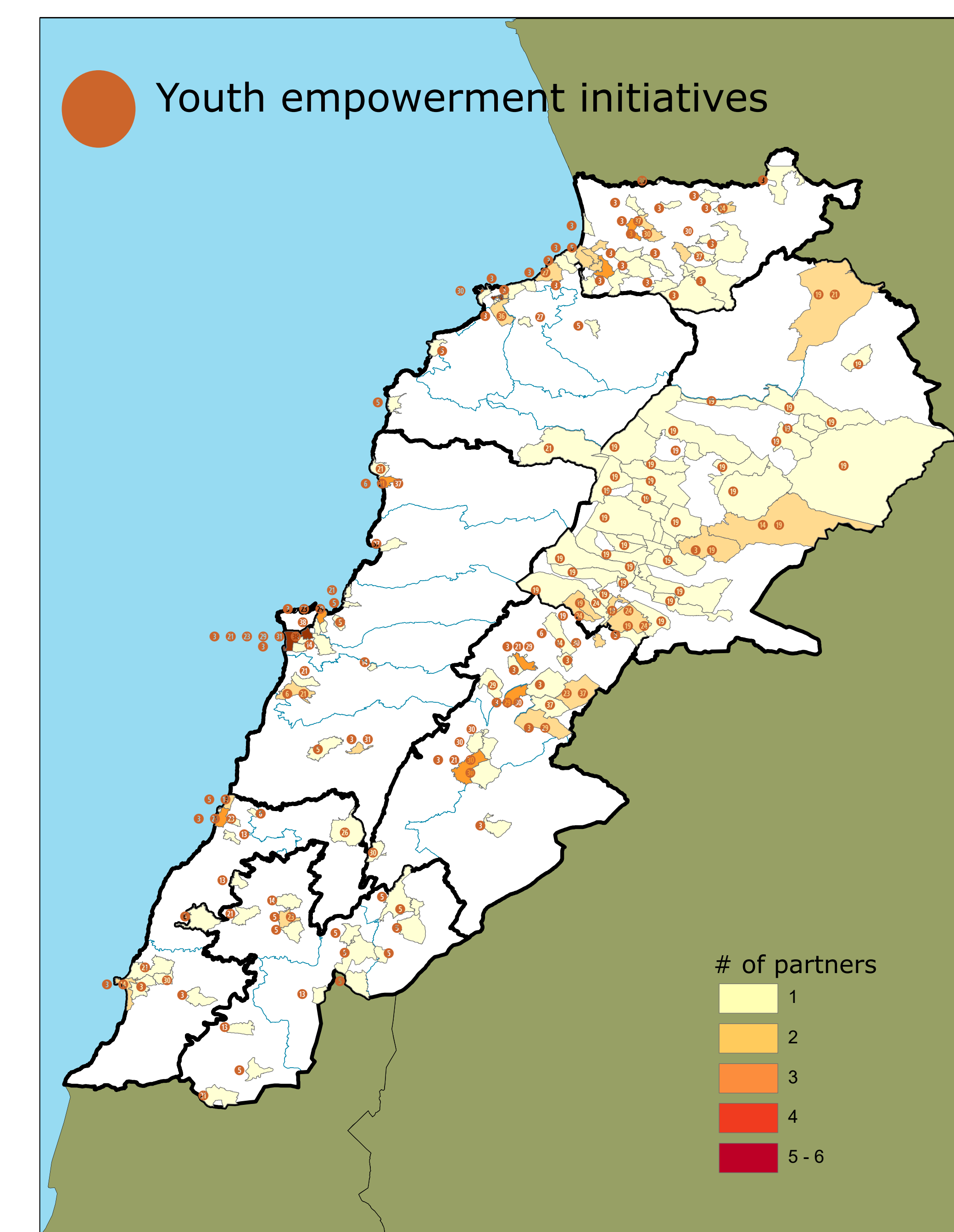
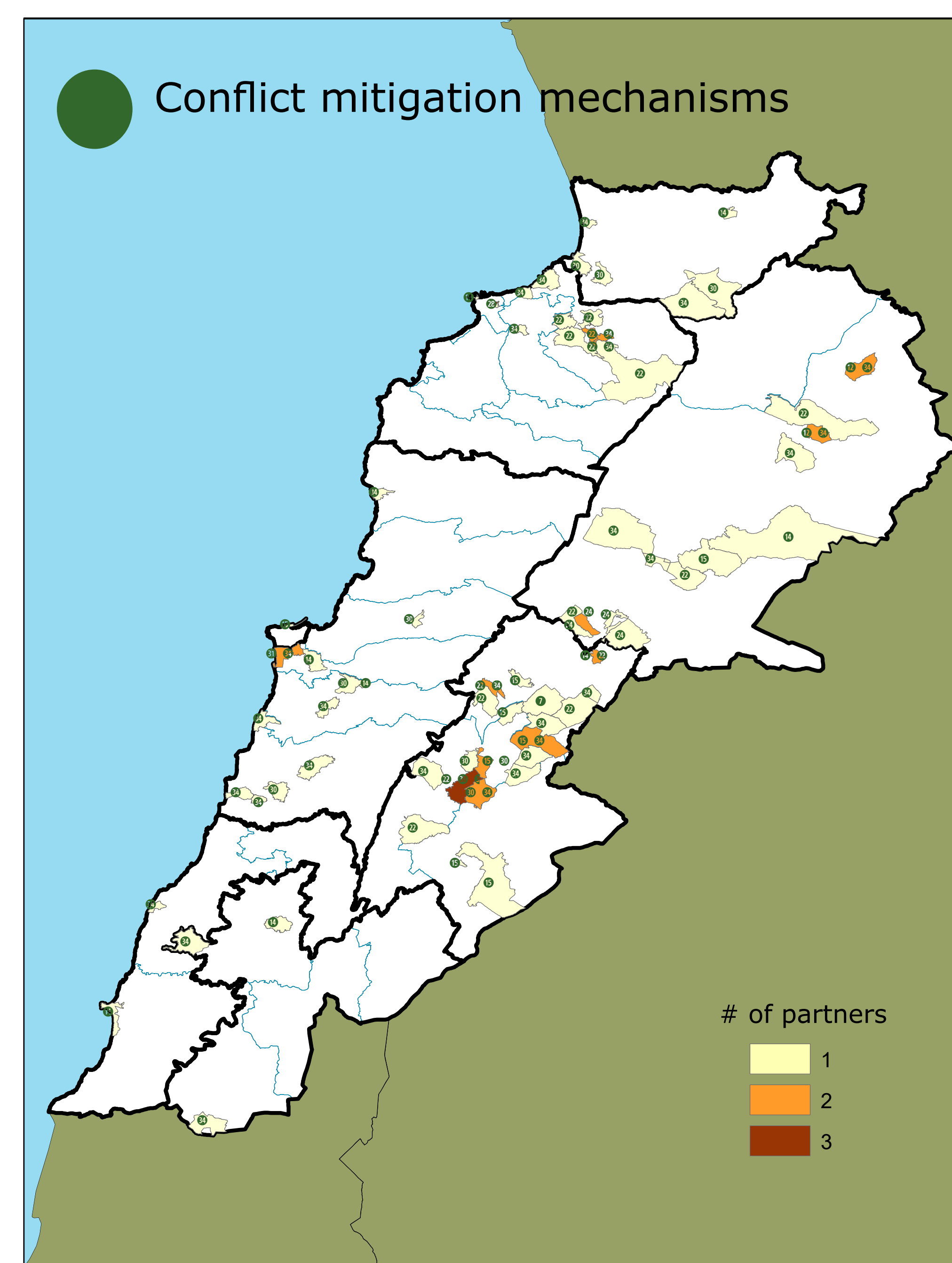
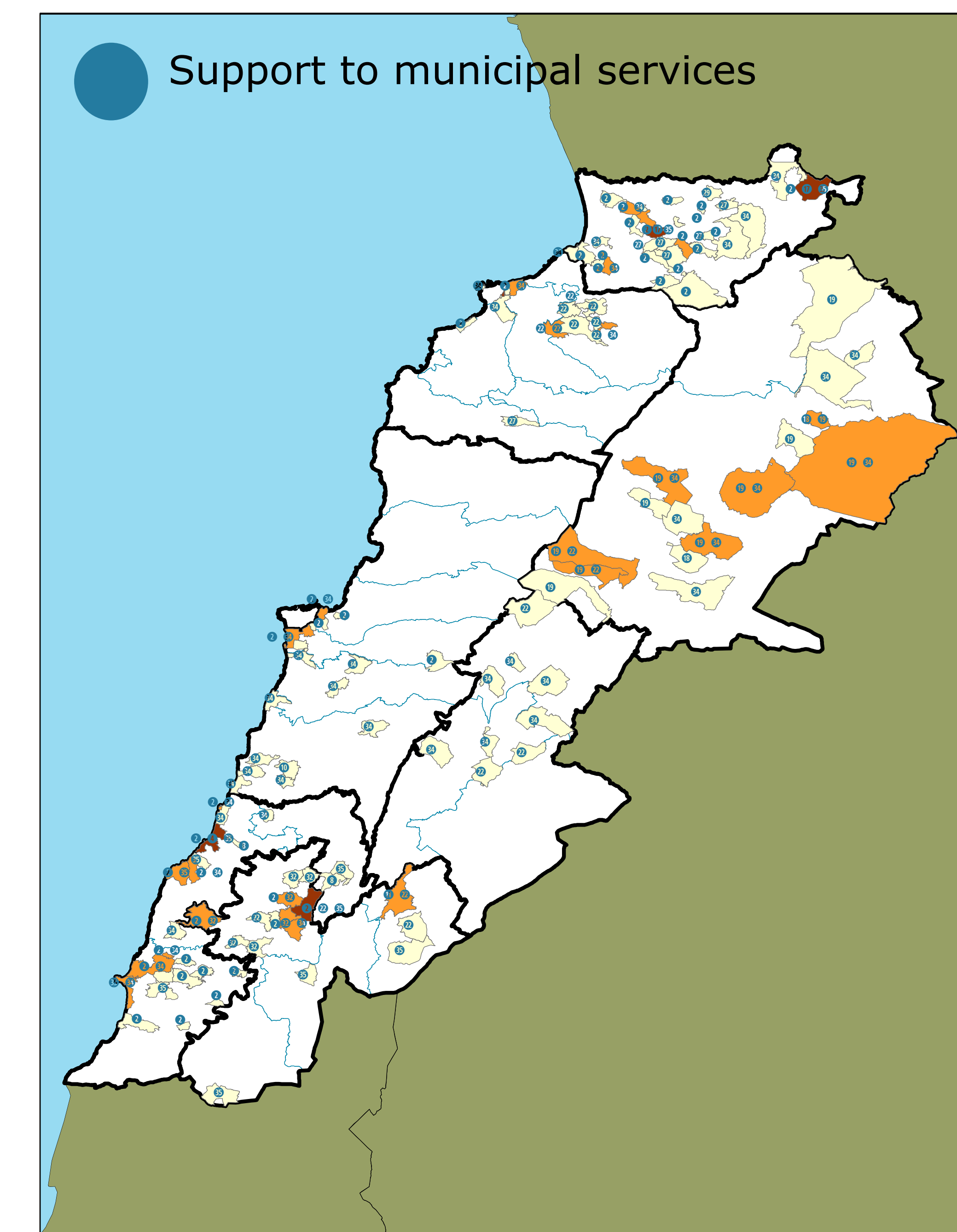
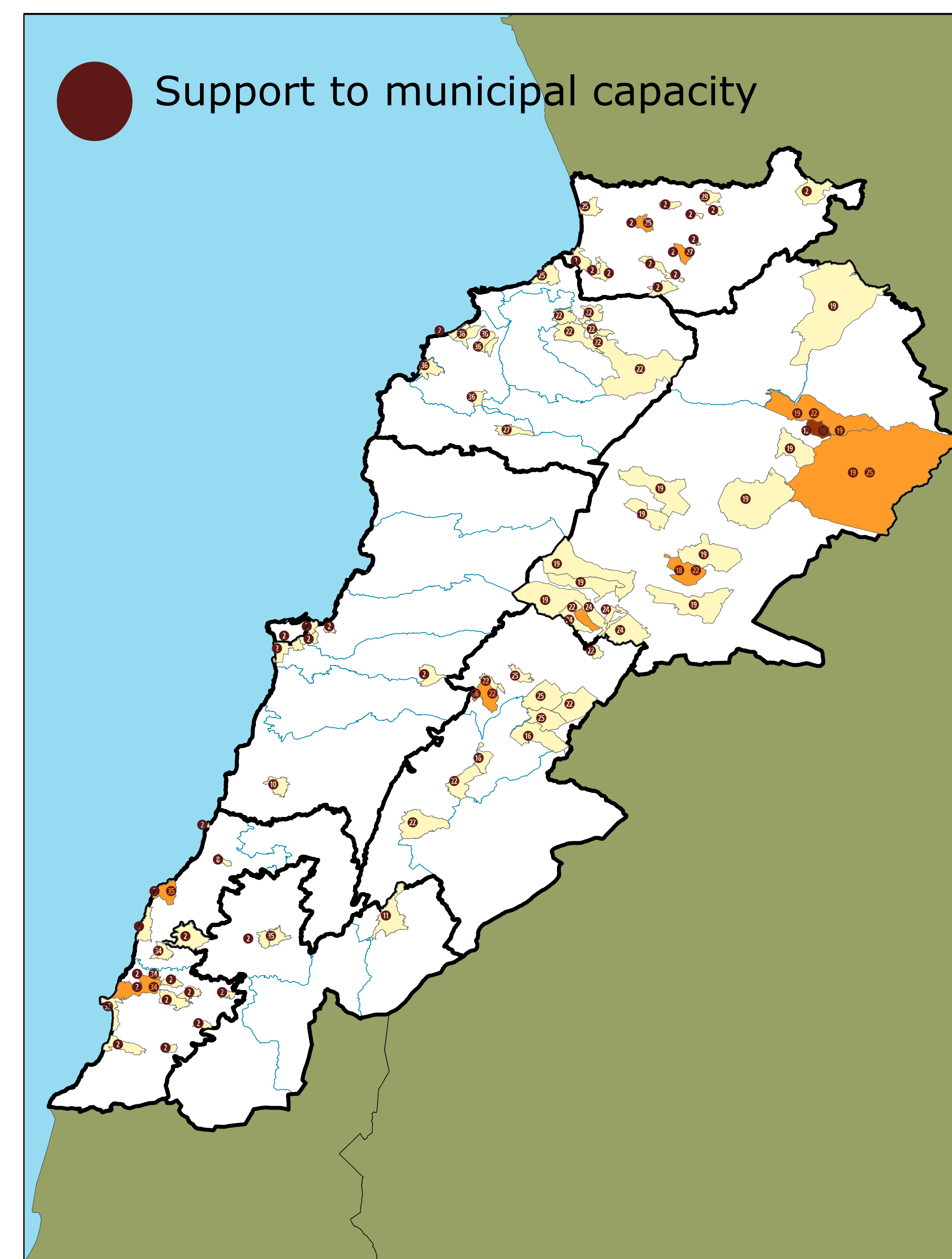
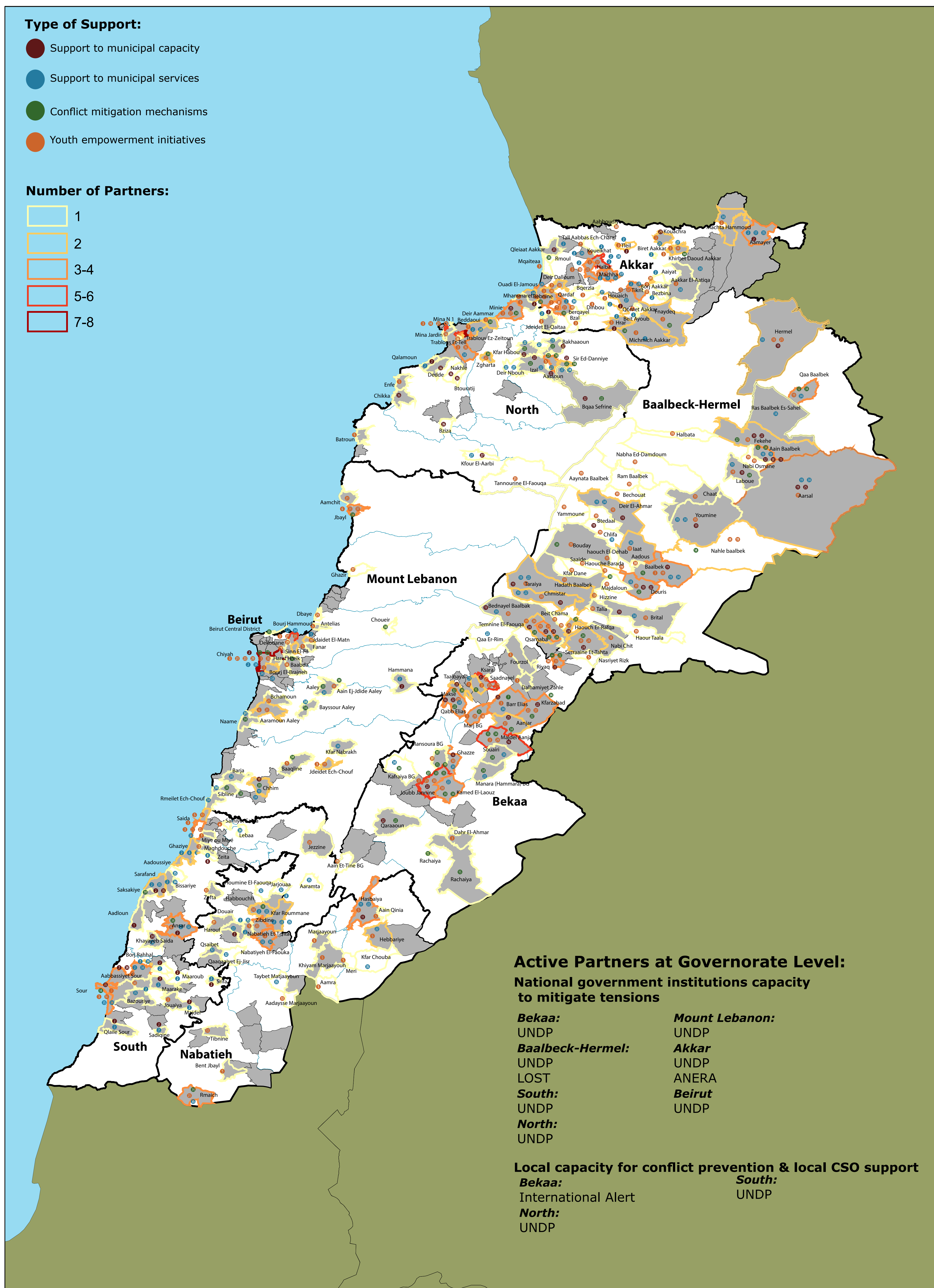




Inter-Agency Coordination
Lebanon

Social Stability Sector

3Ws Mapping: January - December 2017



- Administrative Boundaries:**
- 1 ACF
 - 2 ACTED
 - 3 ANERA
 - 4 ARMADILLA
 - 5 AVSI
 - 6 Avsi-Cesvi
 - 7 Basmeh & Zeitooneh
 - 8 BEAM of Environment
 - 9 CARE
 - 10 CHF
 - 11 CISP
 - 12 GVC
 - 13 Hilfswerk Austria Int.
 - 14 Hoops Club
 - 15 House of Peace
 - 16 Interos
 - 17 IOM
 - 18 IRC
 - 19 LOST
 - 20 MARCH
 - 21 MASAR
 - 22 Mercy Corps
 - 23 MSL
 - 24 Nabad
 - 25 NRC
 - 26 OXFAM
 - 27 RMF
 - 28 SAFADI
 - 29 SCI
 - 30 SFCG
 - 31 SIF
 - 32 Solidar
 - 33 Solidarites International
 - 34 UNDP
 - 35 UN-Habitat
 - 36 UNICEF
 - 37 UN-Women
 - 38 WVI