



HIGHLIGHTS

35,065

refugees are actually in the camp out of

53,962

persons of concern registered

58%

of children, including

337

Identified separated and unaccompanied minors

1,217

people with disabilities,

37%

of these are children

3 in 10

households are headed by women

1,669

women at risk

8,575

shelters currently allocated

10,023

shelters built since opening

General Information

Date of opening: April 30th, 2014

Capacity: 50,000 people (exp. to 100,000)

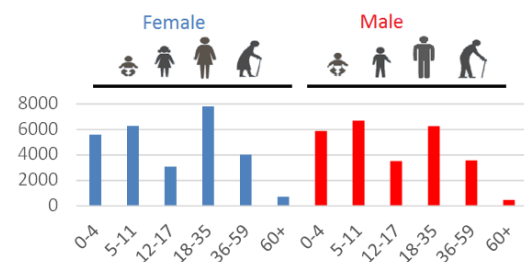
Size of camp area: 14.7 km²

Population increased since Jan'16: 85%

Place of origin in Syria	Total PoC
Aleppo	27.1%
Homs	18.8%
Dar'a	13.5%
Ar-raqqa	10.1%
Other areas	30.5%
Total	100%

2017 Funding priorities

- Health
- Shelter
- NFI
- Protection



UNHCR Presence

52 national staff

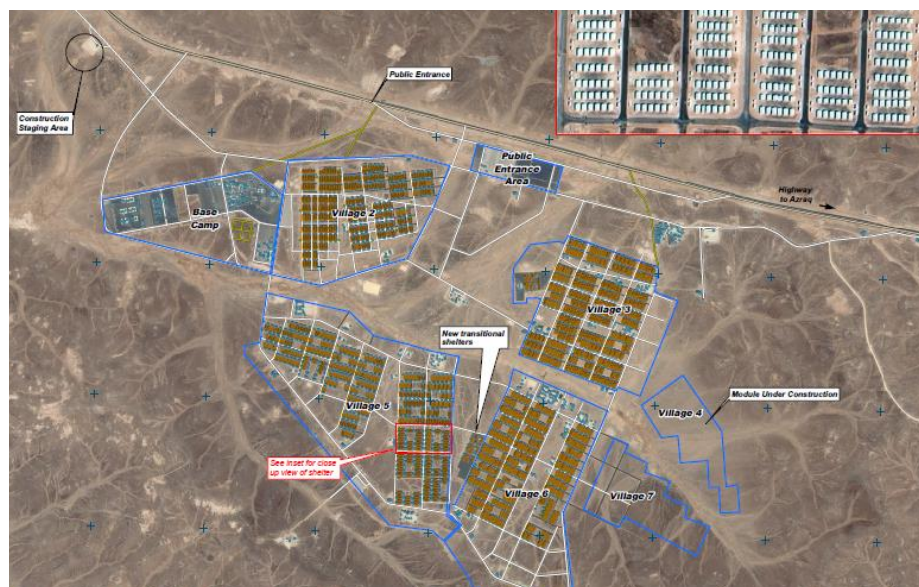
6 international staff

1 international volunteers

Geographical Snapshot:

Distance to national borders:

Syria: 90 km, Iraq: 255 km, Saudi Arabia: 75 km



Map: UNOSAT

*Figures as per 31st December 2016

TWO YEARS ON

Winterization

- The distribution of winterization assistance is ongoing and will continue until end-February. The basic needs component of the winterization include heaters, gas cylinders and gas refills, high thermal blankets and shelter intervention. In addition, each refugee in Azraq camp received from UNHCR US\$28/20JOD to cover winter needs. In addition, the drainage system has been cleaned and repaired in preparation for potential flooding.

Energy

- A comprehensive energy plan to connect electricity to every household is ongoing. As 1st January, over 2,250 shelters in V3 and V6 have been connected to the grid providing electricity to over 9,000 refugees. Each shelter has an allowance of **1kWh/day**, enough power to operate lights, a refrigerator, television, a fan and charge phones. UNHCR has distributed an average of **4** solar lanterns per household which provide with light the rest of the households. A solar power plant is currently being installed in the camp to reduce the cost of electricity bills.

Livelihoods

- Two market areas are operating in Azraq camp. The **200 shops** - 100 owned by the refugees and 100 by the host community - provide the camp with food shops, restaurants, accessories, bikes and many other items. In addition, UNHCR and its partners have set up an Incentive Based Volunteering (IBV) scheme, through which refugees play an active role in the functioning of the camp while earning some extra income. Vocational and skills trainings are being provided in the camp by partner organisations.

Food Security

- Refugees receive **20JOD (equivalent to \$28)** per person every month from WFP in the form of an electronic voucher which can be used to buy food from the supermarkets in the camp using the card-less EyePay iris scanning system, connected to UNHCR's registration database. WFP also distributes **240 gr of bread daily** to all refugees in the camp. Ready to eat meals are provided to refugees upon arrival and a school feeding programme is in place for students in the formal and informal schools.

Education

- The new academic year starts with the opening of new Primary and Secondary schools to guarantee access to education for all children in the camp. Schools operate two shifts, one for girls in the morning and boys in the afternoon. So far, over **8,000** students are enrolled at the school. In addition, 11 Makani Centres provide learning support to boys and girls. Kindergarten facilities and day care activities are also available in the camp.

Health

- **3 primary health care centers** (PHC) operate in the camp, one comprehensive PHC in Village 6, one basic in Village 3 and one temporary in Village 5. PHCs are open from 9am to 4pm daily. Secondary level healthcare (medical surgical and maternity care) is available to refugees at the field **hospital running 24 hour per day**. Health and nutrition services are provided through UNHCR partners, including mental and reproductive health. An average of **30 babies per week** was delivered this month.

Water and Sanitation

- There is one new borehole in the camp with a capacity of 58m³/h which ensures good water quality and quantity control as well as better cost efficiency. The average water supply is **950 m³** per day to the camp. Water is distributed through the water supply network to **76** tap stands.

Targeting Persons with Specific Needs

- UNHCR and its partners provide psychosocial support to men, women, girls and boys in need. Special assistance is delivered to vulnerable groups such as single parent families and persons with disabilities. UNHCR works closely with its partners on child protection issues and to strengthen early identification, referral and response to sexual and gender-based violence (SGBV) cases.

WORKING WITH PARTNERS

UNHCR works with the following partners in Azraq Camp: The Syrian Refugee Affairs Directorate (SRAD), Ministry of Public Works and Housing, Ministry of Health, Ministry of Education, ACF, ACTED, AMR, ARDD-Legal Aid, CARE, DRC, Finn Church Aid, FPSC, Handicap International, ICRC, IMC, IOM, IRC, Mercy Corps, NHF, NRC, Questscope, Relief International, Save the Children, UNFPA, UNICEF, WFP and World Vision.

Contacts:

Gamal Yacout, Officer in Charge, yacout@unhcr.org, Cell +962-79-024 25 91

Olga Sarrado Mur, Associate External Relations Officer, sarrado@unhcr.org, Cell +962-79-761 77 99