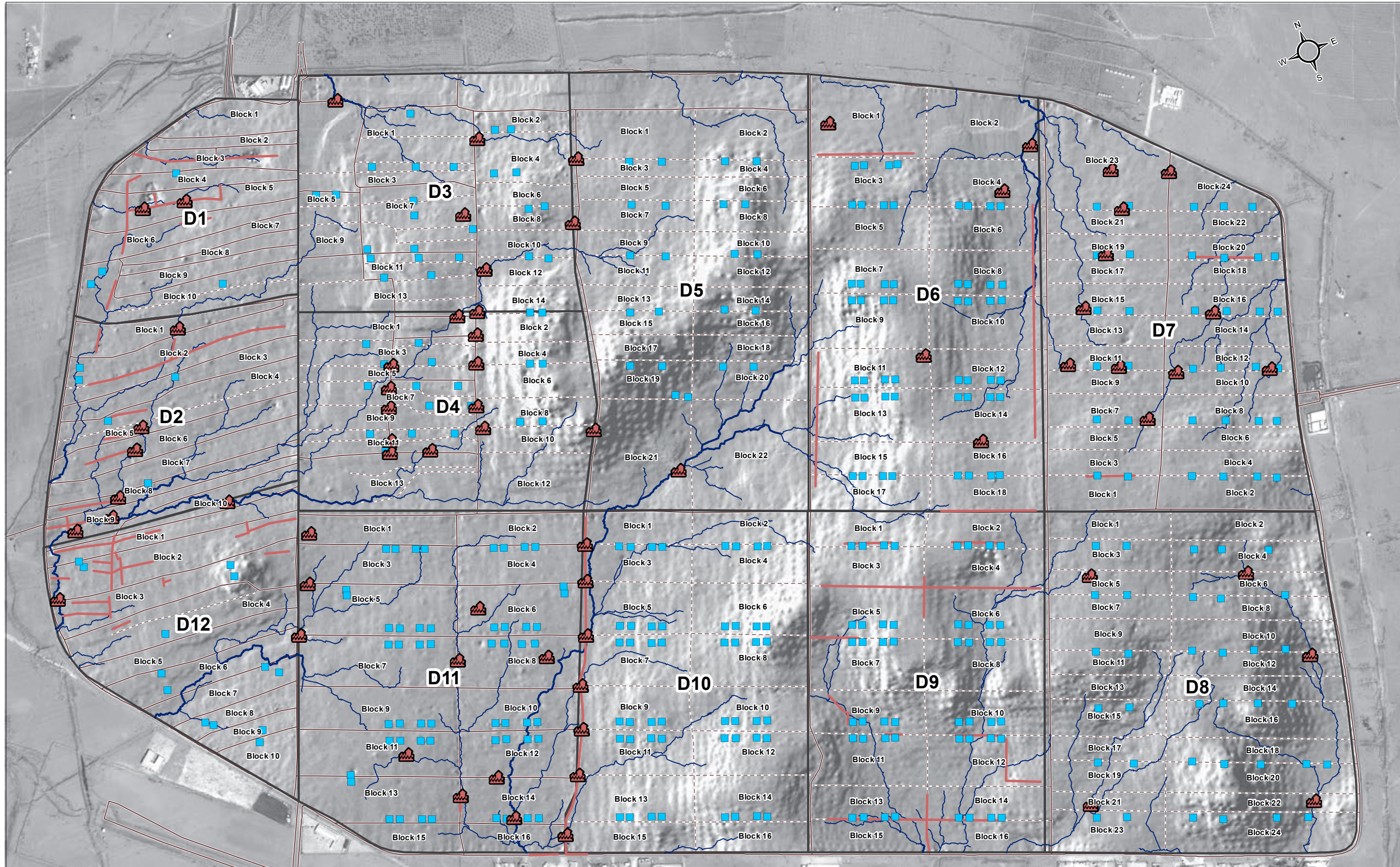




### Legend

- Medium Flow
- High Flow
- Flooded Road
- Flood Incident
- WASH Center
- Paved Road
- Unpaved Road
- District Boundary



Data Sources:  
Camp facilities -- UNHCR  
Elevation -- UNHCR  
Flood risk area/road -- ACTED, JEN, OXFAM

Satellite Acquisition Date:  
26/04/2015 by Digitalglobe  
Provided by: UNOSAT

Projection: WGS 1984 UTM Zone 37N

File: JOR\_Map\_Zaatari\_CCM\_WaterFlow\_Nov2015\_A3

Note: Data, designations and boundaries contained on this map are not warranted to be error-free and do not imply acceptance by partners, associates or donors mentioned on this map.



The water flow channels as shown on the map were created based on a Digital Elevation Model (DEM) using hydrological analysis techniques. Elevation point data with an accuracy of 2.5 meters was interpolated to create the DEM. In case of heavy rain or snow, these lines represent the channels through which water runoff will predominantly collect and flow. The heavier blue lines represent channels of higher flow accumulation.

Flood incidents were observed and reported by ACTED, JEN, and Oxfam on 2 November 2015.

The location of wash centres are shown in the map for reference. Damaged wash centres have a hole in the ground where the wash centre used to be present. During rainfall events, water collects in these holes.

