

DEMOCRATIC REPUBLIC OF THE CONGO

MONTHLY STATISTICS - CENTRAL AFRICAN REFUGEES

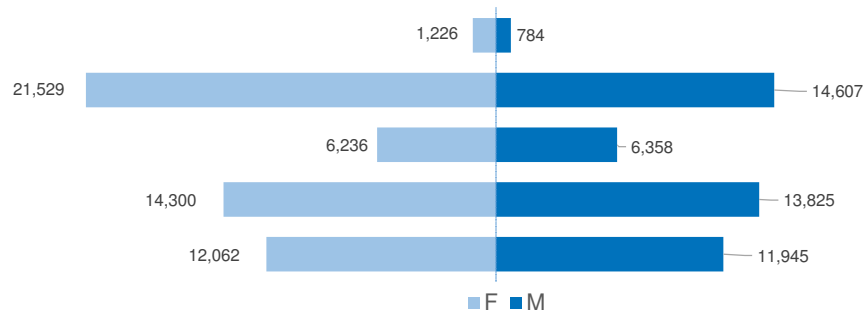


Total 167,004

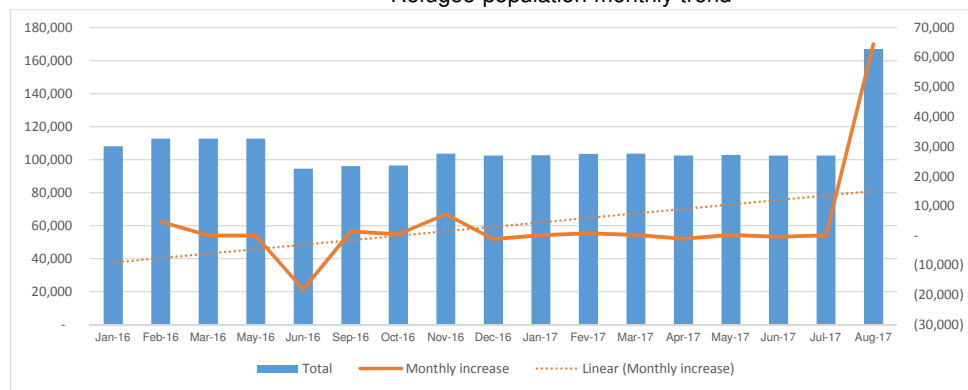
Situation as of August 31, 2017

Province	Locality/City		F 0-4	F 5-11	F 12-17	F 18-59	F 60^	S/ Total	M 0-4	M 5-11	M 5-17	M 18-59	M 60^	S/ Total	Total
Urban															
Kinshasa	Kinshasa	BIMS	20	24	18	42	0	104	11	20	4	100	3	138	242
Haut-Katanga	Lubumbashi		0	0	0	1	0	1	0	1	3	2	0	6	7
Total Urban			20	24	18	43	0	105	11	21	7	102	3	144	249
In Camp Territory															
Bas Uélé	Mboti		109	56	37	116	5	323	103	64	45	173	10	395	718
Nord Ubangi	Inke	BIMS	1,500	2,179	1,023	2,827	212	7,741	1,529	2,166	1,220	2,292	120	7,327	15,068
Nord Ubangi	Bili	BIMS	1,041	1,299	432	1,579	111	4,462	1,053	1,353	578	1,710	93	4,787	9,249
Sud Ubangi	Boyabo	BIMS	1,858	2,812	1,304	3,981	230	10,185	1,889	2,713	1,246	2,127	78	8,053	18,238
Sud Ubangi	Mole	BIMS	1,880	2,343	1,067	3,342	138	8,770	1,815	2,027	1,086	2,136	70	7,134	15,904
Total in Camp			6,388	8,689	3,863	11,845	696	31,481	6,389	8,323	4,175	8,438	371	27,696	59,177
Out of Camp Territory															
Bas Uélé	Bondo and Ango		1,342	1,224	527	2,409	140	5,642	1,283	1,225	533	1,552	142	4,735	10,377
Nord Ubangi	Mobayi Mbongo	BIMS	1,363	1,398	721	2,113	118	5,713	1,395	1,439	729	1,404	120	5,087	10,800
Sud Ubangi	Zongo	BIMS	462	472	171	765	33	1,903	457	458	157	508	19	1,599	3,502
Sud Ubangi	Libenge	BIMS	567	546	241	803	48	2,205	570	541	227	545	30	1,913	4,118
Sud Ubangi	Gemena	BIMS	101	122	64	183	9	479	106	125	40	130	2	403	882
Nord Ubangi	Gbadolite	BIMS	218	252	102	351	15	938	259	286	112	294	22	973	1,911
Nord Ubangi	Yakoma	BIMS	105	149	60	131	14	459	93	133	62	140	4	432	891
Total out of Camps			4,158	4,163	1,886	6,755	377	17,339	4,163	4,207	1,860	4,573	339	15,142	32,481
Pre-registered (BOSOBOLO AND MOBAYI MBONGO)															
Nord Ubangi	Bosobolo/Bili (SIDI and DULA)		1,250	1,241	403	2,562	139	5,595	1,135	1,076	220	1,180	53	3,664	9,259
Nord Ubangi	Mobayi Mbongo/Ngapo river		260	195	70	344	15	884	265	207	97	318	19	906	1,790
Total Pre-Registered			1,510	1,436	473	2,906	154	6,479	1,400	1,283	317	1,498	72	4,570	11,049
New Caseload (Nord Ubangi & Bas-Uele)**															
Nord Ubangi			3,232	3,770	1,616	5,658	270	14,546	3,199	3,742	1,594	3,641	218	12,394	26,940
Bas Uélé			4,324	4,406	2,272	7,911	715	19,628	4,135	4,334	2,359	6,036	616	17,480	37,108
Total New Caseload			7,556	8,176	3,888	13,569	985	34,174	7,334	8,076	3,953	9,677	834	29,874	64,048
TOTAL			19,632	22,488	10,128	35,118	2,212	89,578	19,297	21,910	10,312	24,288	1,619	77,426	167,004

Age and gender of refugee population



Refugee population monthly trend



Refugee Population Biometrically Enrolled (BIMS): 80,805

**The figure of CAR refugees in DRC has risen to 167004 over the past months. This figures comprises some 64048 recent arrivals for whom registration is ongoing. The figure could rise further as influxes are reported from various, often inaccessible, zones. 103,000 among these refugees have arrived in DRC prior to the latest outbreak of violence and are mostly biometrically registered.

Source: UNHCR. For more information on refugee statistics in DRC, please contact: DRCIM@UNHCR.ORG