



Global Shelter Cluster
ShelterCluster.org
Coordinating Humanitarian Shelter

Global Shelter Cluster

Mid-Year Update 2016



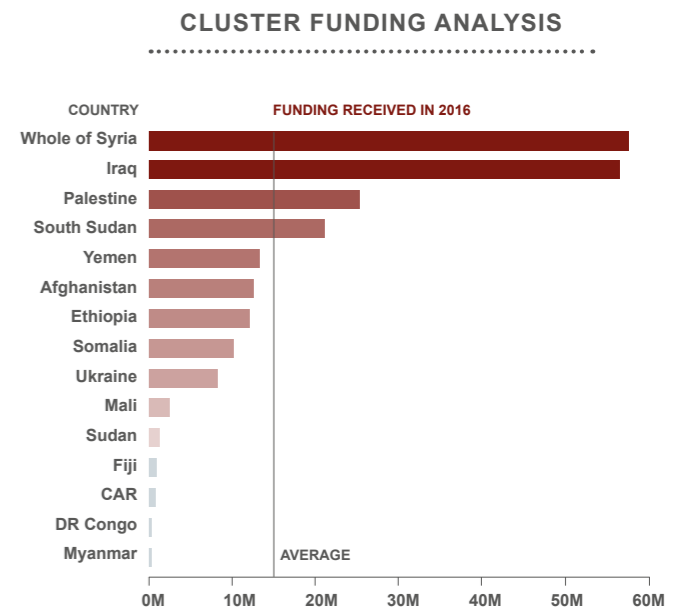
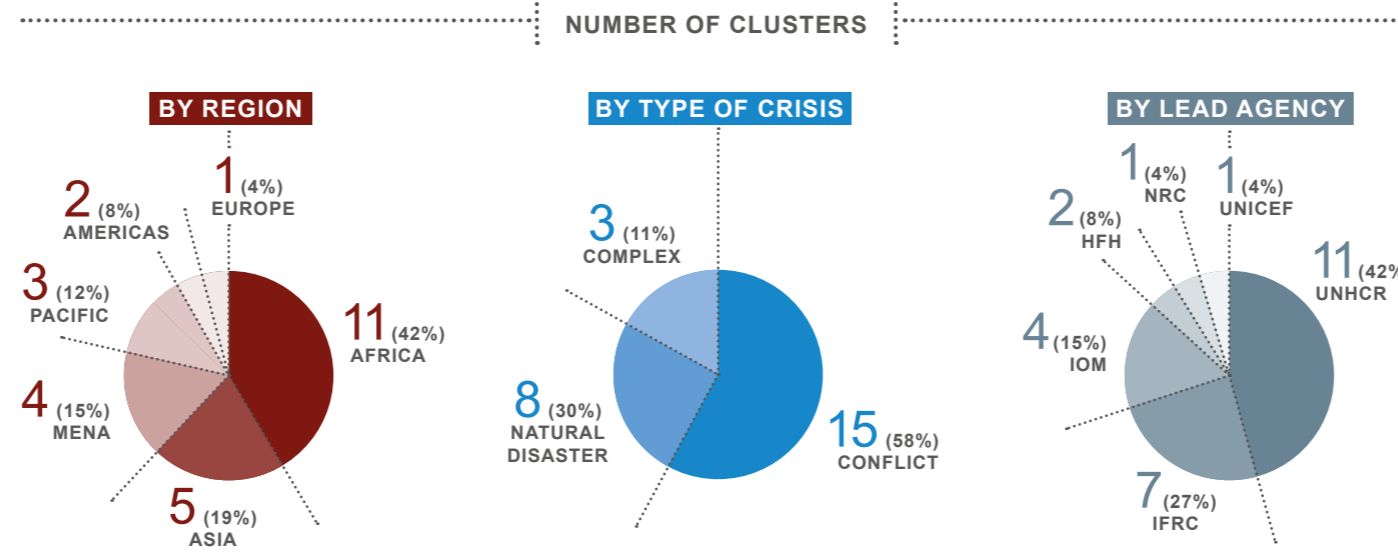
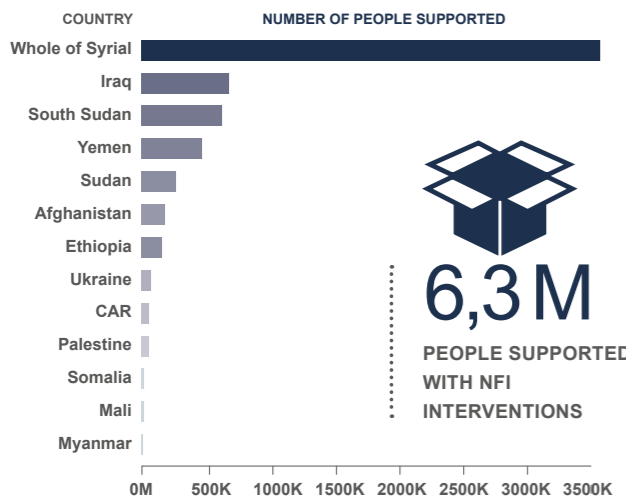
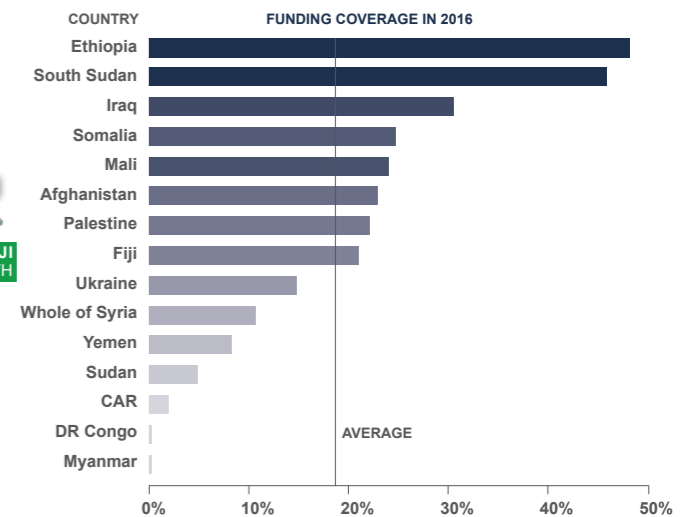
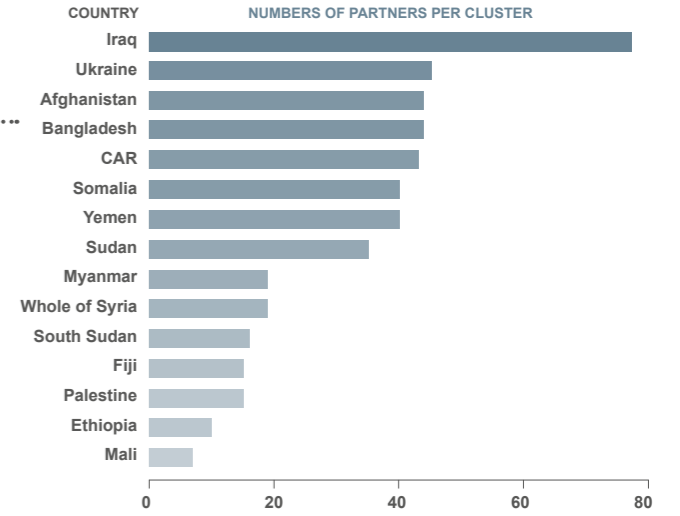
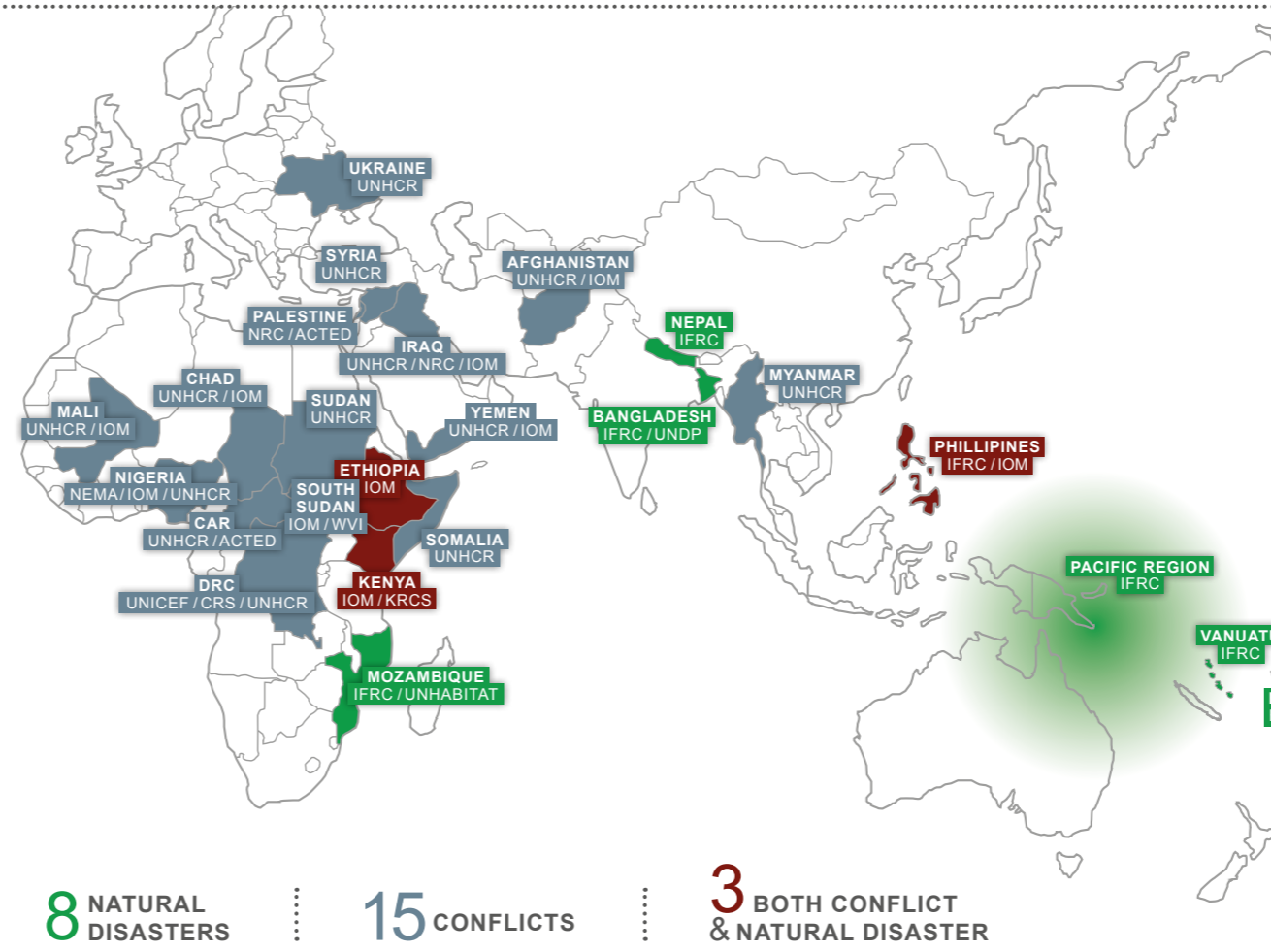
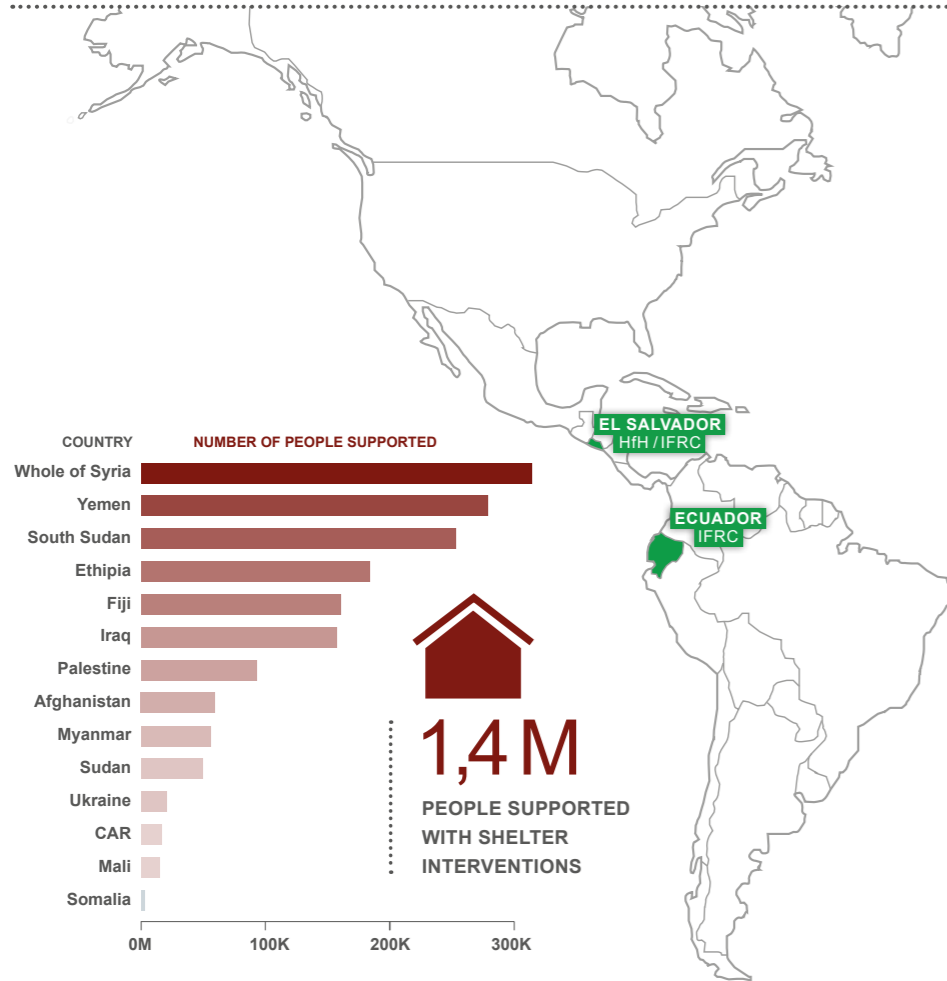
469
CLUSTER PARTNERS

\$219 M
FUNDING RECEIVED
IN 2016

6,6 MILLION
PEOPLE SUPPORTED

26
ACTIVE CLUSTERS

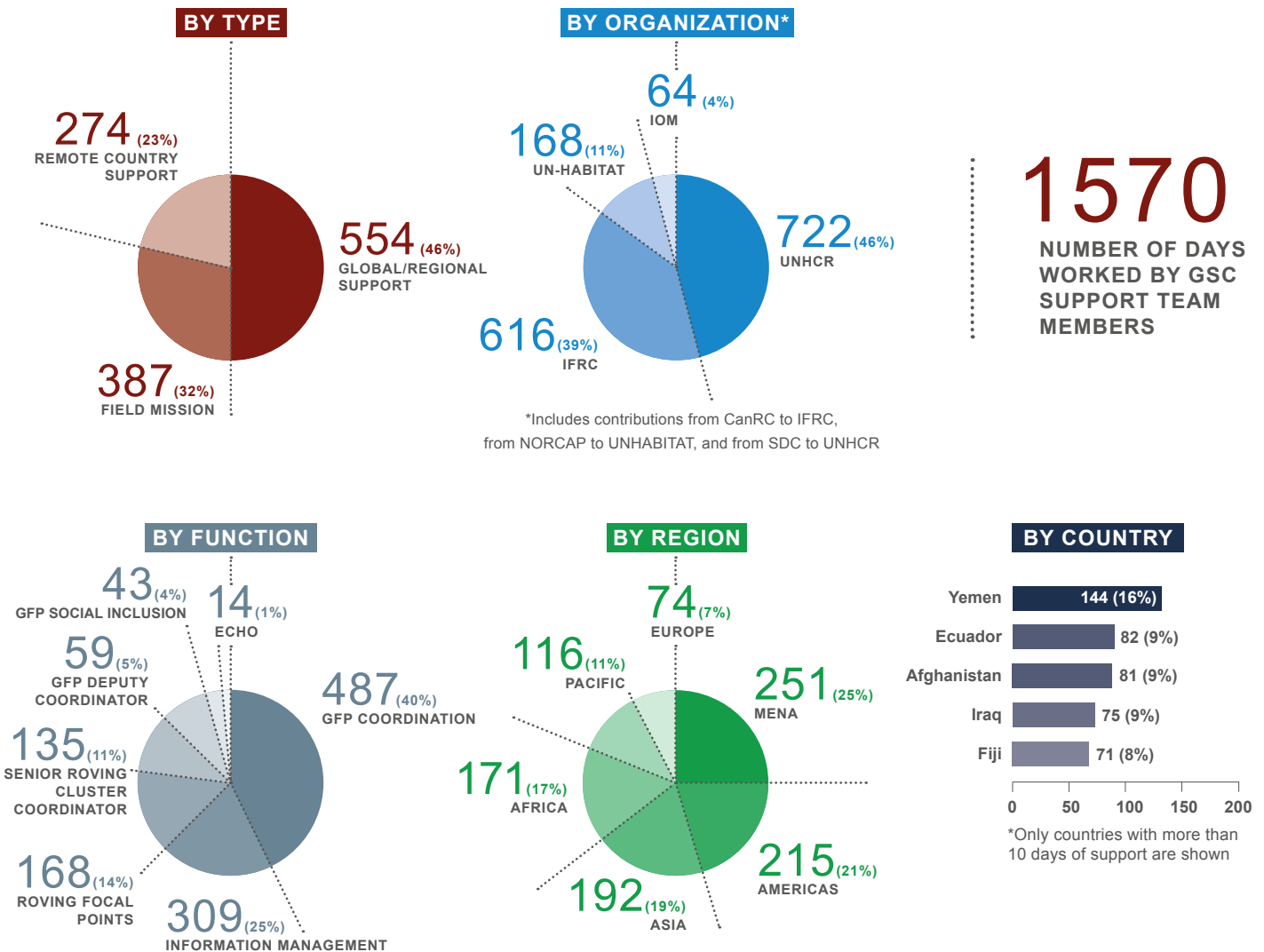
Data based on factsheets submitted by clusters and OCHA's FTS, all amounts are in USD.



Data based on factsheets submitted by clusters for the time period January – June 2016, if more recent data was available, this has been included (the case for Iraq, Kenya, Nepal, Palestine, Turkey, Ukraine and Vanuatu). Figures presented may not accurately reflect achievements, usually these are captured in more detail at the end of the year. Achievements are from all cluster partners (not just the lead agency) and any form of shelter and/or NFI assistance is counted (except for the distribution of single items). To avoid overlap, the total number of people reached is based on the highest number of beneficiaries for either NFI or shelter per country.

FROM JANUARY TO AUGUST 2016, THE GLOBAL SUPPORT TEAM UNDERTOOK A TOTAL OF

23 FIELD MISSIONS TO 15 COUNTRIES



Data includes information received to date from members of the GSC Support Team, except for the Global Cluster Coordinators.

In 2015, a considerable effort has been made to gather and consolidate key data from country-level clusters in order to inform evidence-based advocacy. This has been done through introducing tools for information systematization like the GSC Factsheet Guidance and information brochures explaining the Global Shelter Cluster and the Cluster Approach in general. These factsheets can be found as annex to this document. The website has a page collecting all these factsheets and providing overall analysis of the trends and challenges.

