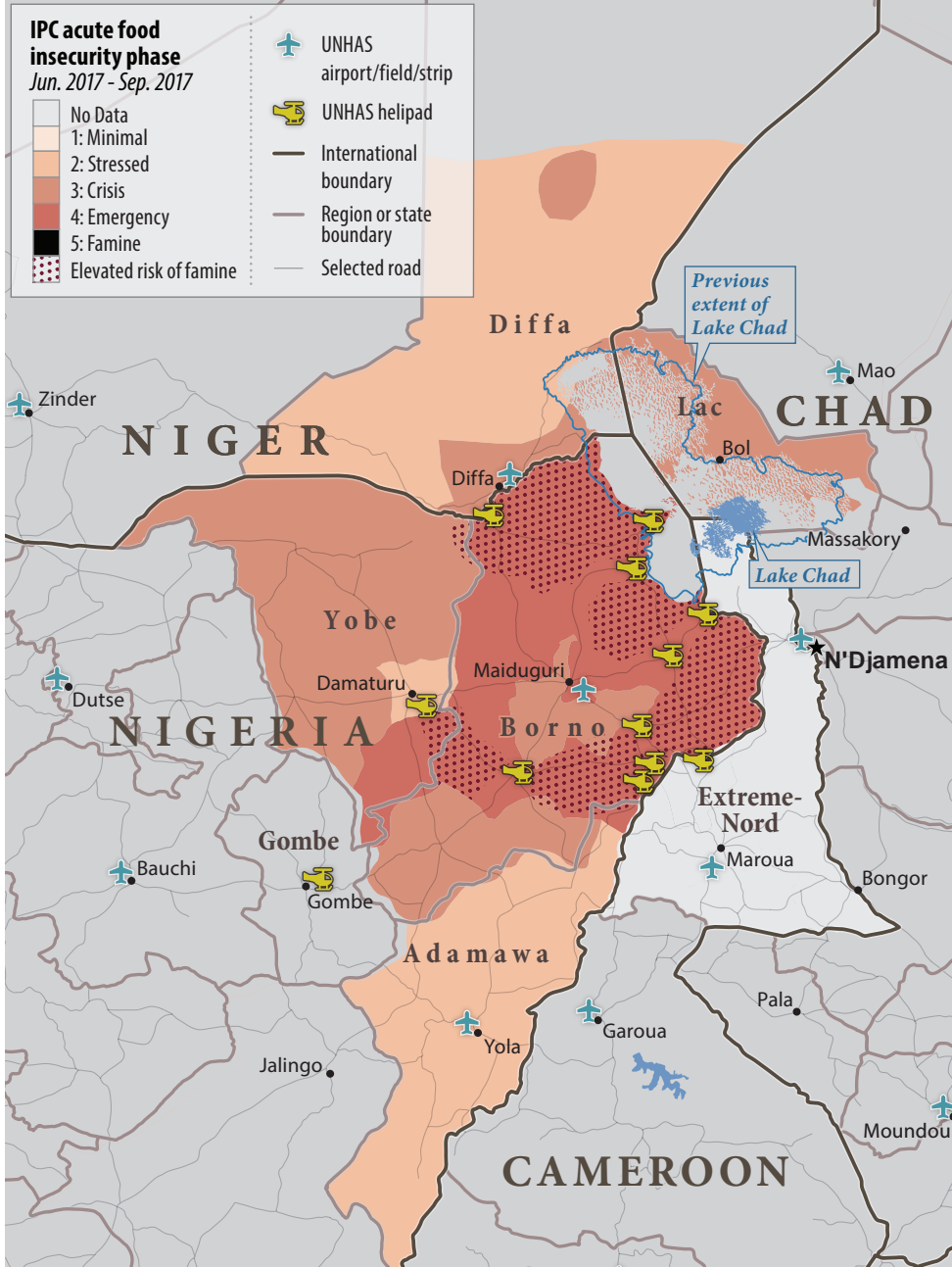
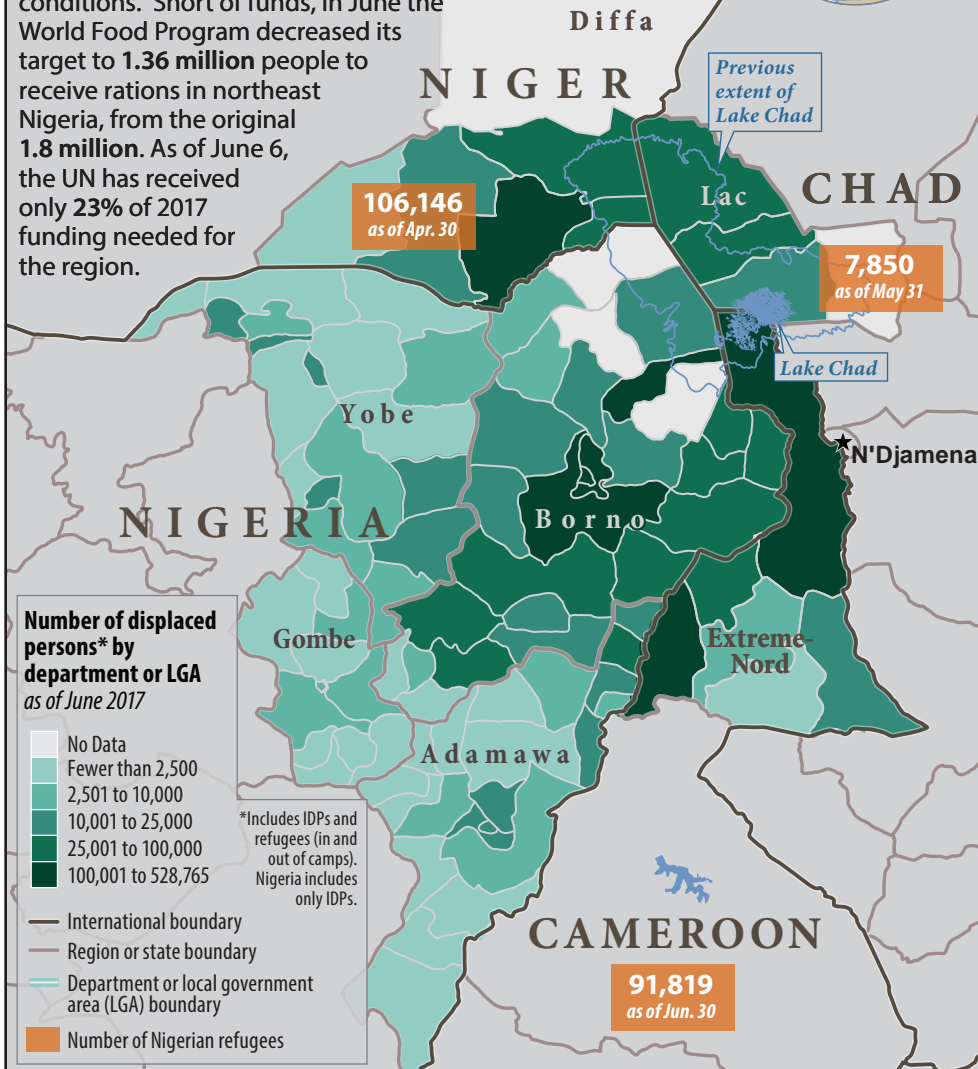


Lake Chad Basin: Food Security and Displacement Snapshot

Boko Haram and ISIS-West Africa related conflict continues to restrict humanitarian access in the Lake Chad Basin region, where an estimated **10.7 million** people need assistance and **2.4 million** are displaced. At least **7.2 million** people need food assistance, especially in inaccessible areas in northeast Nigeria where an estimated **50,000** are experiencing famine-like conditions. Short of funds, in June the World Food Program decreased its target to **1.36 million** people to receive rations in northeast Nigeria, from the original **1.8 million**. As of June 6, the UN has received only **23%** of 2017 funding needed for the region.



Names and boundary representation are not necessarily authoritative

Sources: Cadre Harmonisé, FEWS NET, IOM, OCHA, REACH, UN Humanitarian Air Service (UNHAS), UNHCR, WFP

July 7, 2017 - U1626 STATE (HIU)