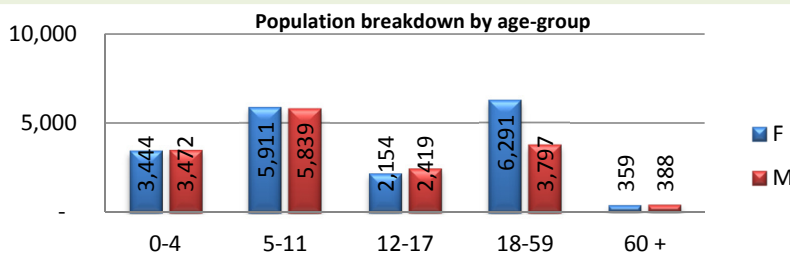


Camp Opened: August 2011 **Camp phase:** Maintenance & Care

Refugee Population

34,074

(As of 08 March 2013)



Geographic Snapshot

| | | |
|--|-------------------|-------------|
| GPS Coordinates | Longitude: | 41.51'39.1" |
| | Latitude: | 4.22'09.6" |
| Size of camp area | 395.5 hecta. | |
| Number of Sector Divisions | 4 | |
| Number of blocks | 60 | |
| Number of Communities | 510 | |
| Number of family plots | 8,160 | |
| Average Plot Size per Household | 180m ² | |
| Distance from Border | 42Km | |

Contextual Background

Pattern in Population Change

► Organized large-scale relocation from the Transit Centre will begin on 05 August 2011 and will complete early September 2011, during which time Hilaweyn Camp has grown rapidly

Areas of Origin

► 50% are from Gedo, 31% are from Bay, 16% are from Bakol, remaining are from various other locations in Somalia.

Cultural Background

► Sunni Muslim

► 64% are May May speakers from Rahanweyn clan, 22% are Mahatiri speakers from Maheren clan and the remaining are from various other Somali clans.

Main Occupations

► Pastoralists (livestock herding: goats, camels, cows, sheep and donkeys)

Tips for Humanitarians

- UNHCR provides protection and monitors delivery of services to all refugees in Hilaweyn Camp.
- Camp Management is done by ARRA with support from UNHCR.
- Camp Coordination Meetings, co-chaired by ARRA and UNHCR, are held weekly in Hilaweyn Camp with humanitarian actors.
- All refugees in Hilaweyn Camp are individually registered in UNHCR's proGres database and hold ration cards. Ration card numbers are useful for referral between partners and for distribution events. Refugees have been given a Proof of Registration document showing family-related and individual details, including each person's photo.
- Biometrics (fingerprinting) has been used for registering refugees living in Hilaweyn. Biometrics assists in preventing double registration. No refugee household should have more than one ration card.
- Treatment of SAM (Severe Acute Malnutrition) and Treatment of MAM (Moderate Acute Malnutrition), for both Under 5's and MOC (Malnourished Other Categories) Programme, a targeted feeding programme for severely malnourished children between 5 years and 18

Administrative Structure

Role of Ethiopian Government in Hilaweyn

* **ARRA is active in the following sectors:**

► Camp Management ► Protection ► Camp security ► Primary health care ► Primary education ► Food/CRIs distribution

* **ARRA staff posted inside the camp include:**

► Camp Coordinator ► Programme Officer ► Protection Officers ► Health Staff ► Teachers ► Distribution Coordinator

Role of Camp Residents in Self-Management

Refugee Central Committee (RCC) - A Refugee Chairperson and four other refugees are acting in a coordination role until the RCC can be elected. The RCC will be a resident coordination and leadership body that is consulted on multi-sectoral issues pertaining to camp life. It will be made up of a Chairman, a Deputy, Zone Leaders and women representatives. Zone Leaders gather information on each zone in the camp, provide information to people living in each zone and advocate on behalf of their respective zone residents.

Women's association - The Women's Association, made up of 35 women elected by camp residents, runs a grinding mill (income generation project), mobilizes women's groups and represents women's interests in camp coordination.

Food Distribution Committee - provides information about food distribution to the community, assist with scooping and provide feedback on the quality of the food.

Child welfare committee - Ensure childrens participate in decision making process.

** Plans are underway to establish the following resident self-governance associations:

Neighbourhood Watch Programme




Disability Committee

Refugee / Host Community Committee

Local Administration

The Kebele Chairman is responsible for local (non-refugee) administration on behalf of Dollo Ado Woreda, Somali Regional State, Ethiopia. The Kebele Chairman and his administrative committee are consulted about refugee-host community relationship, natural resource use and managing conflicts between the refugee and host communities, with the help of local elders.




Hilaweyn Camp: Who Does What Where

| Health  | |
|--|-------------------------|
| Activities | Actors |
| ♦Primary Health Care offers in-patient, out-patient, basic laboratory services, Immunization (EPI) and reproductive health including basic emergency obstetric and neonatal care services | ARRA |
| ♦Community Health workers identify new malnutrition cases, assist in health education, community referrals to the health facilities and following up on patients already in the health programmes.among other activities | ARRA |
| ♦Rehabilitation programmes for disabled people | RADO |
| ♦Mobile health team doing outreach | UNHCR, WHO, UNICEF |
| ♦Acute Watery Diarrhea prevention and response | UNHCR, WHO, UNICEF |
| Infrastructure | |
| ♦Acute Watery Treatment Centre (in progress) | ARRA |
| ♦Construction of permanent health center | UNHCR, ARRA |
| ♦Health Clinic with in-patient and out-patient treatment, EPI rooms, an ante-natal care room, delivery room, post-natal care room, a laboratory and a dispensary | ARRA |
| Gaps | |
| ♦Strengthening of Health Information System | |
| ♦No HIV/AIDS program | |
| ♦Comprehensive Emergency obstetric care and emergency surgical services | |
| Nutrition  | |
| Activities | Actors |
| ♦Treatment of SAM (Severe Acute Malnutrition), for both Under 5's and MOC (Malnourished Other Categories) Programme, a targeted feeding programme for severely malnourished children between 5 years and 18 years. | MSF-H (SC) ACF (OTP) |
| ♦Treatment of MAM (Moderate Acute Malnutrition) | ACF |
| ♦Blanket / complimentary feeding for all children under 5 | ACF |
| ♦Infant Young Child Feeding Programme | ACF, SC-I, UNICEF |
| Infrastructure | |
| ♦01 OTP Centre, 02 identified for decentralization. | MSF-H |
| ♦MAM / Blanket Feeding Centre. | ACF |
| ♦Stabilization Centre (SC) where all severe acute malnourished children with complications are treated in an in-patient department. 01 service established. | MSF-H |
| Gaps | |
| ♦Strengthening of Health Information System | |
| ♦Strengthen outreach nutrition and IYCF program | |
| Water, Hygiene & Sanitation  | |
| Activities | Actors |
| ♦Trucking of treated water from the non-permanent water treatment plant – Construction of semi-permanent latrines – Upgrade the distribution system and water source – Household shower construction | OXFAM-GB |
| ♦Hygiene Promotion – sensitization, awareness raising and community mobilization on water and sanitation issues | OXFAM-GB |
| Infrastructure | |
| ♦Permanent water system designed and under installation. Five (05) more jet wells installed for Hiloywne B | OXFAM-GB, UNHCR, |
| ♦Bath shelter construction | OXFAM-GB |
| ♦Referral SFP Centre | |
| ♦Communal latrines constructed and many more under way | OXFAM-GB, UNHCR |
| ♦ECOSAN latrines are to be piloted | OXFAM-GB |
| ♦Emergency (trench) latrines | OXFAM-GB, UNHCR |
| Gaps | |
| ♦Property rights and sanitation corridors | |
| ♦Clean demarcation of sanitation corridors – drainage in the camp including flood mapping | |
| ♦Sustainable solid waste disposal management system | |
| ♦Upgrade the distribution system and water source | |
| ♦Road access (in particular accessing the water source) | |

UNHCR gratefully acknowledges the support of the following partners in Hilaweyn Camp:






Hilaweyn Camp: Who Does What Where (continued)

| Protection & Community Services  | |
|--|---------------------|
| Activities | Actors |
| ♦On-site ARRA Protection Officer is the first point of contact for security liaison and cases of detention | ARRA |
| ♦Child protection activities, including establishing child-friendly spaces | UNHCR, SC-I, UNICEF |
| ♦Grinding mill for women | UNHCR |
| ♦Child friendly spaces with playgrounds, games and materials | SC-I, UNICEF |
| ♦Women & Girls' Wellness Centre and Outreach Center open, providing case management and psychosocial support services for survivors of GBV and activities for all women and girls. | IRC |
| ♦Supporting camp self-management committees | UNHCR, ARRA |
| ♦Refugee/Host community conflict resolution | UNHCR |
| ♦Establishing programmes that prevent and respond to Sexual and Gender Based Violence incidents | UNHCR, IRC |
| ♦Protection monitoring, individual case follow-up and provision of community services | UNHCR |
| ♦Facilitation of family reunification, including for Unaccompanied Minors and Separated Children | UNHCR, ARRA |
| ♦Supporting Older age people | HelpAge, PWO |
| ♦Registration updates, lost ration cards and newborn and death registration ("continuous registration") | UNHCR |
| Infrastructure | |
| ♦Women & Girls' Wellness Centre" and "Outreach Centre" | IRC |
| ♦Child friendly spaces centers | UNICEF, SC-I |
| ♦Women's Association grinding mill | UNHCR |
| Gaps | |
| ♦Self reliance | |
| Shelter  | |
| Activities | Actors |
| ♦Emergency shelter (tent) supply and erection | UNHCR, NRC, DRC |
| ♦Transitional shelter provision | UNHCR, NRC, |
| Infrastructure | |
| ♦Emergency Shelter: Lightweight Emergency Tent; 2 rooms; can accommodate average family size of 5 persons; 15-21m2 | UNHCR |
| ♦Emergency Shelter: Family Tent; 1 room; can accommodate average family size of 5 persons; 16 m2 main floor area, plus two 3.5m2 vestibules, for a total area of 23 m2 | UNHCR, NRC |
| ♦A market place of 500 Scm2 | DRC |
| ♦Transitional Shelter: bamboo and mud brick shelters; 2 room; (planned) | UNHCR, NRC |
| Gaps | |
| ♦Survey Results prepared and send for feedback | |
| ♦Transitional Shelter is in planning stages | |
| ♦Incomplete address system | |
| Core Relief Items  | |
| Activities | Actors |
| ♦Sleeping mats, jerry cans, buckets, kitchen sets, soap and blankets distribution | UNHCR, ARRA |
| Infrastructure | |
| ♦01 kerosene distribution stations of 20 000 Liters construction completed | DRC |
| ♦Central Logistics Base is located in Hilaweyn Camp (which supplies all camps); it consists of 5 rubhalls | UNHCR |
| Gaps | |
| ♦Household Fuel | |
| ♦Lamps | |

UNHCR gratefully acknowledges the support of the following partners in Hilaweyn Camp:



Hilaweyn Camp: Who Does What Where (continued)

| Logistics  | |
|--|-------------------------------|
| Activities | Actors |
| ♦Truck fleet for field deliveries | UNHCR |
| ♦Transportation of family reunification cases | IOM |
| ♦Office and facilities construction | UNHCR |
| ♦Vehicle maintenance, generator repair and other technical support services | THW |
| Infrastructure | |
| ♦Logistics infrastructure for Hilaweyn Camp is located in Hiloweyn Camp and Dollo Ado | |
| ♦Vehicle Maintenance, generator repair and technical support services are provided by THW in UNHCR Dollo Ado compound | |
| ♦5 rub halls of which one is on loan from WFP | |
| Gaps | |
| ♦Further upgrade of access roads to Type B | |
| Education  | |
| Activities | Actors |
| ♦Non formal education | SC-I |
| ♦YEP: Adult literacy and numeracy | NRC |
| ♦Primary school construction | UNHCR, ARRA, UNICEF, LWF, NRC |
| ♦ABE | SC-I |
| ♦ECCD schools | SC-I |
| Infrastructure | |
| ♦Primary school constructions | UNHCR, ARRA, UNICEF |
| ♦YEP center construction | NRC |
| ♦Emergency school | SC-I |
| Gaps | |
| ♦School supplies (books, desks, pencils, uniforms, etc.) | |
| ♦Secondary school | |
| ♦Water provision for schools | |
| Environment  | |
| Activities | Actors |
| ♦Environment assessment | PWO, LWF |
| ♦Raise seedlings and distribute seedlings to the refugees, host communities, agencies and other stakeholders | PWO |
| ♦Rehabilitate degraded environment through terracing and soil bonding activities (about 2Km of degraded lands will be rehabilitated by constructing soil bundling and tracing and 2 hectares will be planted by indigenous trees) | PWO |
| ♦Promote agro-forestry plantation and catchment rehabilitation of areas along the Genale river banks | PWO |
| ♦Build the capacities of refugees and host communities as well as environment staffs and paraprofessionals in the protection, rehabilitation and conservation of local environment. | PWO |
| ♦Solar light and fuel stoves distribution | DRC, WVI |
| ♦Nursery establishment, so far raised more than 50,000 seedlings and distributed more than 41000 seedlings to refugee households, IPs and host communities, formed area closure of 2 hectares for reforestation, environment clubs and community sensitization on environmental protection and conservation. | PWO |
| Infrastructure | |
| Gaps | |
| ♦Household fuel | |
| ♦Environment protection mechanism | |

UNHCR gratefully acknowledges the support of the following partners in Hilaweyn Camp:



Hilaweyn Camp: Who Does What Where (continued)

| Food  | |
|---|----------|
| Activities | Actors |
| ♦Food supply and transportation | WFP |
| ♦Food distribution | ARRA |
| Infrastructure | |
| ♦2 rubhalls | ARRA |
| ♦1 food distribution point | ARRA |
| Gaps | |
| ♦Secondary distribution points | |
| ♦Food distribution point does not meet standards and needs sheltering Food distribution system and post-distribution monitoring (no accurate process, no accurate food and stock report) | |
| ♦lack of fencing for distribution center | |
| Livelihoods  | |
| Activities | Actors |
| ♦Micro-Credit | |
| ♦Skills Training i.e. literacy, leather product and tailoring | NRC, LWF |
| ♦Women's association grinding mill | UNHCR |
| ♦Irrigation schemes focusing on livelihoods improvement along the Genale river | PWO |
| Infrastructure | |
| Gaps | |
| ♦No firewood program | |

UNHCR gratefully acknowledges the support of the following partners in Hilaweyn Camp:

