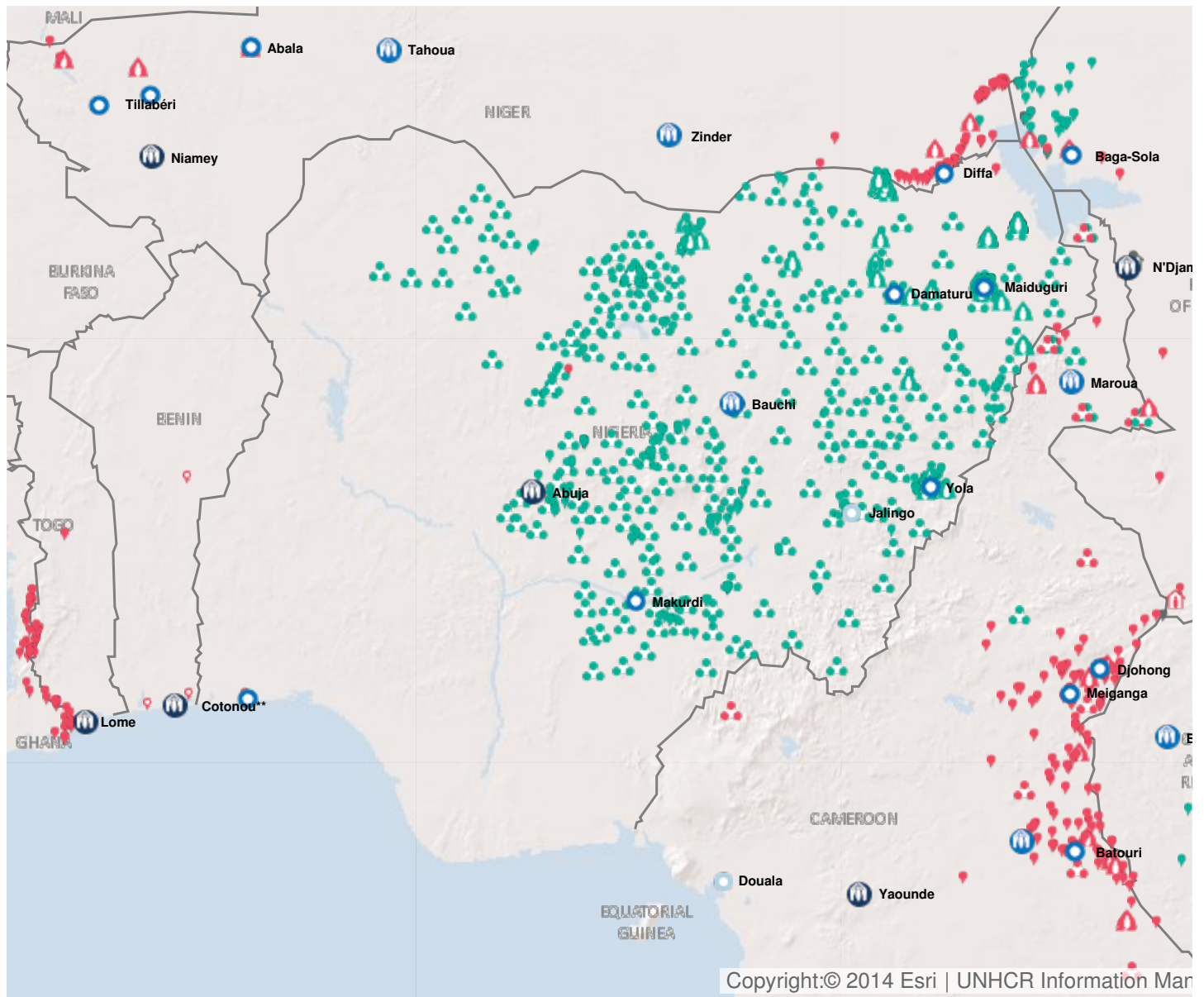


2017 Planning summary

Downloaded on 2/12/2016

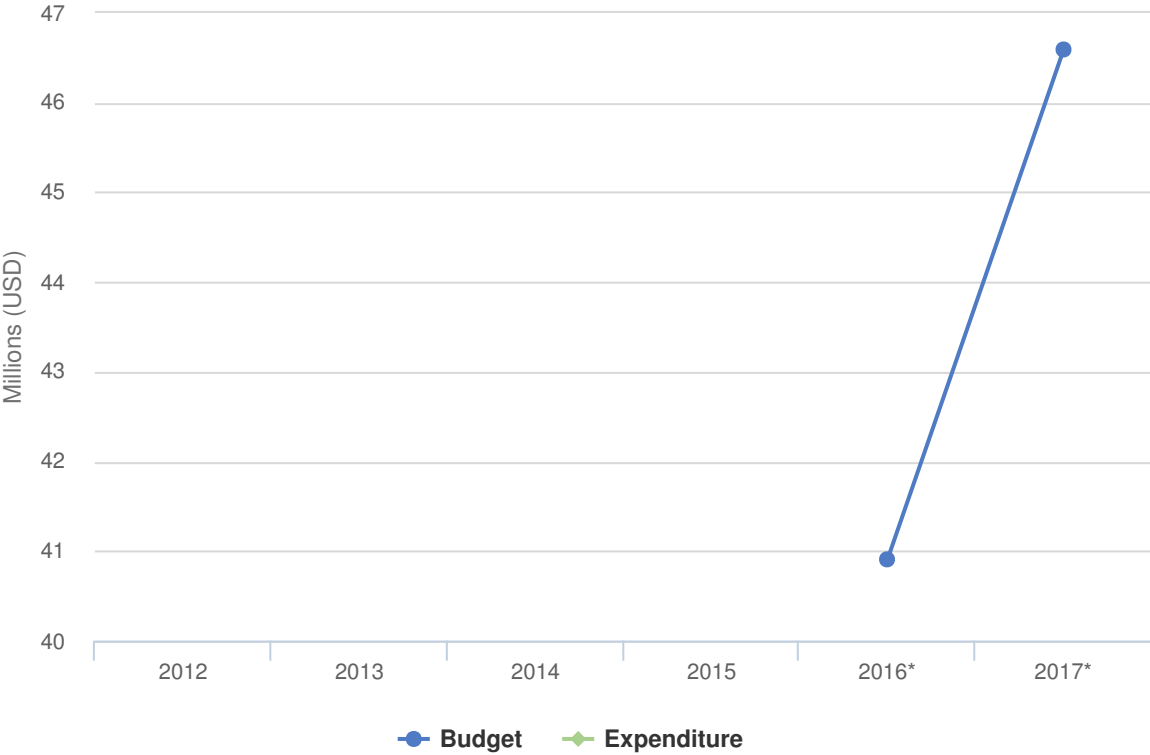
Operation: Nigeria

Location



Latest update of camps and office locations **21 Nov 2016**. By clicking on the icons on the map, additional information is displayed.

Budgets and Expenditure for Nigeria



Working environment

The escalation of conflict in north-eastern Nigeria has triggered displacement within the country and across borders to Cameroon, Chad and Niger. Reports of violations of human rights and international humanitarian law, including sexual violence and exploitation, disappearances, attacks on civilian sites and forced recruitment, are abundant. Insecurity has also had a severe impact on humanitarian needs, as well as on humanitarian access and response.

At present, there are more than 5 million people affected by the conflict, including 2,7 million IDPs, over 175,000 returning refugees as well as an estimated 2,000,000 civilians who remain trapped in conflict areas or inaccessible parts of the region. More areas are expected to become accessible as the military recaptures territory and secures civilian locations. Eighty one percent of the IDPs live with host communities putting considerable pressure on their resources..

The majority of internally displaced people (IDPs) are in the states of Adamawa, Borno and Yobe in the North East region. An estimated 90 per cent of displacement is caused by the insurgency, while the remaining 10 per cent results from natural hazards as well as intercommunal clashes. With the recent return of Nigerians from Cameroon and Chad, some of whom have returned to IDP situations the number of IDPs in Nigeria has continued to grow.

In June 2016, the Government of Nigeria, with UNHCR's support, hosted a Regional Protection Dialogue on the Lake Chad Basin to tackle the worrisome increase in protection incidents, including cases of refoulement. At the close of the Dialogue, the Governments of Cameroon, Chad, Niger and Nigeria pledged to carry out local, national and regional actions to enhance protection and identify potential solutions to displacement.

Led by the Government of Nigeria and supported by the World Bank, the UN and the EU, the North-East Recovery and Peace Building Assessment (RPBA) was launched in 2016 to evaluate the economic, social and physical impact of the conflict in Nigeria. The assessment builds on previous studies and will aim to develop an overarching framework for stability, peacebuilding and recovery.

Key priorities

In 2017, the UNHCR operation will focus on:

- Implementing targeted protection services, providing protection-focused material assistance, undertaking shelter and community-based interventions, protection monitoring and advocacy, as well as strengthening of the capacity of local and national authorities to protect IDPs and assist returning IDPs and refugees;
- Pursuing protection and solutions for refugees, IDPs, returnees and stateless persons;
- Preventing and reducing statelessness by building on the outcomes of the Ministerial Conference on Statelessness in February 2015 in Abidjan;
- Supporting the development of a legal, strategic and policy framework regarding the protection and solutions for refugees, IDPs, returnees, stateless persons and other persons of concern through advocacy, capacity-building and technical assistance;
- Enhancing and broadening partnerships with relevant actors, including international non-governmental organizations to ensure that the response to protection and assistance needs is more effective and efficient;
- Strengthening and broadening collaboration with the Economic Community of West African States (ECOWAS) to positively influence subregional policies that incorporate international standards for the protection of displaced populations.

2017 Revised Budget for Nigeria | USD

The following table presents the revised budget for this operation broken down at the objective level. Resource allocation at the objective level is subject to change during the course of the year as the operational situation evolves and priorities shift.

	Pillar 1 Refugee programme	Pillar 3 Reintegration projects	Pillar 4 IDP projects	Total
Favourable Protection Environment				
Law and policy	614,341	0	428,199	1,042,539
Legal remedies and legal assistance	0	0	528,199	528,199
Subtotal	614,341	0	956,398	1,570,738
Fair Protection Processes and Documentation				
Status determination	491,848	0	0	491,848
Subtotal	491,848	0	0	491,848
Security from Violence and Exploitation				
Protection from effects armed conflict	0	0	5,708,111	5,708,111
SGBV prevention and response	402,772	0	0	402,772
Child protection	301,848	0	0	301,848
Subtotal	704,620	0	5,708,111	6,412,731
Basic Needs and Essential Services				
Health	425,848	0	0	425,848
Shelter and infrastructure	0	7,794,682	0	7,794,682
Basic and domestic and hygiene Items	0	1,209,795	3,827,599	5,037,393
Services for persons with specific needs	301,838	0	2,328,199	2,630,037
Education	311,848	0	0	311,848
Subtotal	1,039,534	9,004,476	6,155,798	16,199,808
Community Empowerment and Self Reliance				
Co-existence with local communities	0	1,149,194	0	1,149,194
Self-reliance and livelihoods	356,848	3,138,389	0	3,495,237
Subtotal	356,848	4,287,583	0	4,644,431
Durable Solutions				
Solutions strategy	290,924	0	2,606,398	2,897,322
Subtotal	290,924	0	2,606,398	2,897,322
Leadership, Coordination and Partnerships				
Coordination and partnerships	694,341	0	1,428,199	2,122,539
Donor relations	0	0	1,784,596	1,784,596

	Pillar 1 Refugee programme	Pillar 3 Reintegration projects	Pillar 4 IDP projects	Total
Subtotal	694,341	0	3,212,795	3,907,136
Logistics and Operations Support				
Operations management, coordination and support	804,942	1,828,592	7,834,596	10,468,131
Subtotal	804,942	1,828,592	7,834,596	10,468,131
2017 Revised Budget	4,997,397	15,120,652	26,474,095	46,592,144
