

# DEMOCRATIC REPUBLIC OF THE CONGO

## MONTHLY STATISTICS - CENTRAL AFRICAN REFUGEES



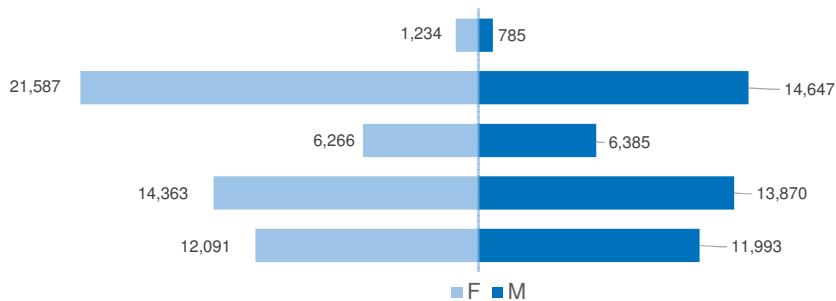
**Total 167,353**



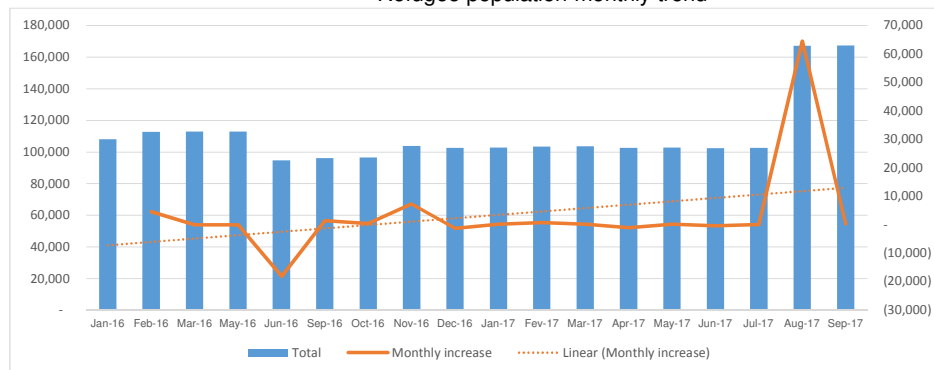
Situation as of September 30, 2017

Province	Locality/City		F 0-4	F 5-11	F12-17	F 18-59	F 60^	S/ Total	M 0-4	M 5-11	M 5-17	M 18-59	M 60^	S/ Total	Total
<b>Urban</b>															
Kinshasa	Kinshasa	BIMS	20	24	18	42	0	104	11	20	4	100	3	138	242
Haut-Katanga	Lubumbashi		0	0	0	1	0	1	0	1	3	2	0	6	7
<b>Total Urban</b>			<b>20</b>	<b>24</b>	<b>18</b>	<b>43</b>	<b>0</b>	<b>105</b>	<b>11</b>	<b>21</b>	<b>7</b>	<b>102</b>	<b>3</b>	<b>144</b>	<b>249</b>
<b>In Camp</b>															
<b>Territory</b>															
Bas Uélé	Mboti		109	56	37	116	5	323	103	64	45	173	10	395	718
Nord Ubangi	Inke	BIMS	1,498	2,181	1,047	2,839	215	7,780	1,537	2,173	1,224	2,314	120	7,368	15,148
Nord Ubangi	Bili	BIMS	1,058	1,327	440	1,586	113	4,524	1,081	1,357	595	1,713	93	4,839	9,363
Sud Ubangi	Boyabo	BIMS	1,873	2,827	1,308	4,000	231	10,239	1,907	2,723	1,250	2,130	79	8,089	18,328
Sud Ubangi	Mole	BIMS	1,879	2,361	1,061	3,362	140	8,803	1,809	2,051	1,088	2,148	70	7,166	15,969
<b>Total in Camp</b>			<b>6,417</b>	<b>8,752</b>	<b>3,893</b>	<b>11,903</b>	<b>704</b>	<b>31,669</b>	<b>6,437</b>	<b>8,368</b>	<b>4,202</b>	<b>8,478</b>	<b>372</b>	<b>27,857</b>	<b>59,526</b>
<b>Out of Camp</b>															
<b>Territory</b>															
Bas Uélé	Bondo		1,342	1,224	527	2,409	140	5,642	1,283	1,225	533	1,552	142	4,735	10,377
Nord Ubangi	Mobayi Mbongo	BIMS	1,363	1,398	721	2,113	118	5,713	1,395	1,439	729	1,404	120	5,087	10,800
Sud Ubangi	Zongo	BIMS	462	472	171	765	33	1,903	457	458	157	508	19	1,599	3,502
Sud Ubangi	Libenge	BIMS	567	546	241	803	48	2,205	570	541	227	545	30	1,913	4,118
Sud Ubangi	Gemena	BIMS	101	122	64	183	9	479	106	125	40	130	2	403	882
Nord Ubangi	Gbadolite	BIMS	218	252	102	351	15	938	259	286	112	294	22	973	1,911
Nord Ubangi	Yakoma	BIMS	105	149	60	131	14	459	93	133	62	140	4	432	891
<b>Total out of Camps</b>			<b>4,158</b>	<b>4,163</b>	<b>1,886</b>	<b>6,755</b>	<b>377</b>	<b>17,339</b>	<b>4,163</b>	<b>4,207</b>	<b>1,860</b>	<b>4,573</b>	<b>339</b>	<b>15,142</b>	<b>32,481</b>
<b>Pre-registered (BOSOBOLO AND MOBAYI MBONGO)</b>															
Nord Ubangi	Bosobolo/Bili (SIDI and DULA)		1,250	1,241	403	2,562	139	5,595	1,135	1,076	220	1,180	53	3,664	9,259
Nord Ubangi	Mobayi Mbongo/Ngapo river		260	195	70	344	15	884	265	207	97	318	19	906	1,790
<b>Total Pre-Registered</b>			<b>1,510</b>	<b>1,436</b>	<b>473</b>	<b>2,906</b>	<b>154</b>	<b>6,479</b>	<b>1,400</b>	<b>1,283</b>	<b>317</b>	<b>1,498</b>	<b>72</b>	<b>4,570</b>	<b>11,049</b>
<b>New Caseload (Nord Ubangi &amp; Bas-Uele)**</b>															
Bas Uélé	Baye	Kobo	135	177	70	303	17	702	122	160	61	236	22	601	1,303
Bas Uélé	Bondo	Kobo	27	36	16	49	11	139	13	34	29	18	4	98	237
Bas Uélé	Ndu	Kobo	1,074	1,305	546	2,604	153	5,682	1,131	1,269	511	1,241	52	4,204	9,886
Nord Ubangi			3,232	3,770	1,616	5,658	270	14,546	3,199	3,742	1,594	3,641	218	12,394	26,940
Bas Uélé			3,088	2,888	1,640	4,955	534	13,105	2,869	2,871	1,758	4,541	538	12,577	25,682
<b>Total New Caseload</b>			<b>6,320</b>	<b>6,658</b>	<b>3,256</b>	<b>10,613</b>	<b>804</b>	<b>34,174</b>	<b>6,068</b>	<b>6,613</b>	<b>3,352</b>	<b>8,182</b>	<b>756</b>	<b>29,874</b>	<b>64,048</b>
<b>TOTAL</b>			<b>18,425</b>	<b>21,033</b>	<b>9,526</b>	<b>32,220</b>	<b>2,039</b>	<b>89,766</b>	<b>18,079</b>	<b>20,492</b>	<b>9,738</b>	<b>22,833</b>	<b>1,542</b>	<b>77,587</b>	<b>167,353</b>

Age and gender of refugee population



Refugee population monthly trend



**Refugee Population Biometrically Enrolled (BIMS): 80,805**

\*\*The figure of CAR refugees in DRC has risen to 167353 over the past months. This figures comprises some 64048 recent arrivals for whom registration is ongoing. The figure could rise further as influxes are reported from various, often inaccessible, zones. 103,000 among these refugees have arrived in DRC prior to the latest outbreak of violence and are mostly biometrically registered.

Source: UNHCR. For more information on refugee statistics in DRC, please contact: DRCIM@UNHCR.ORG