

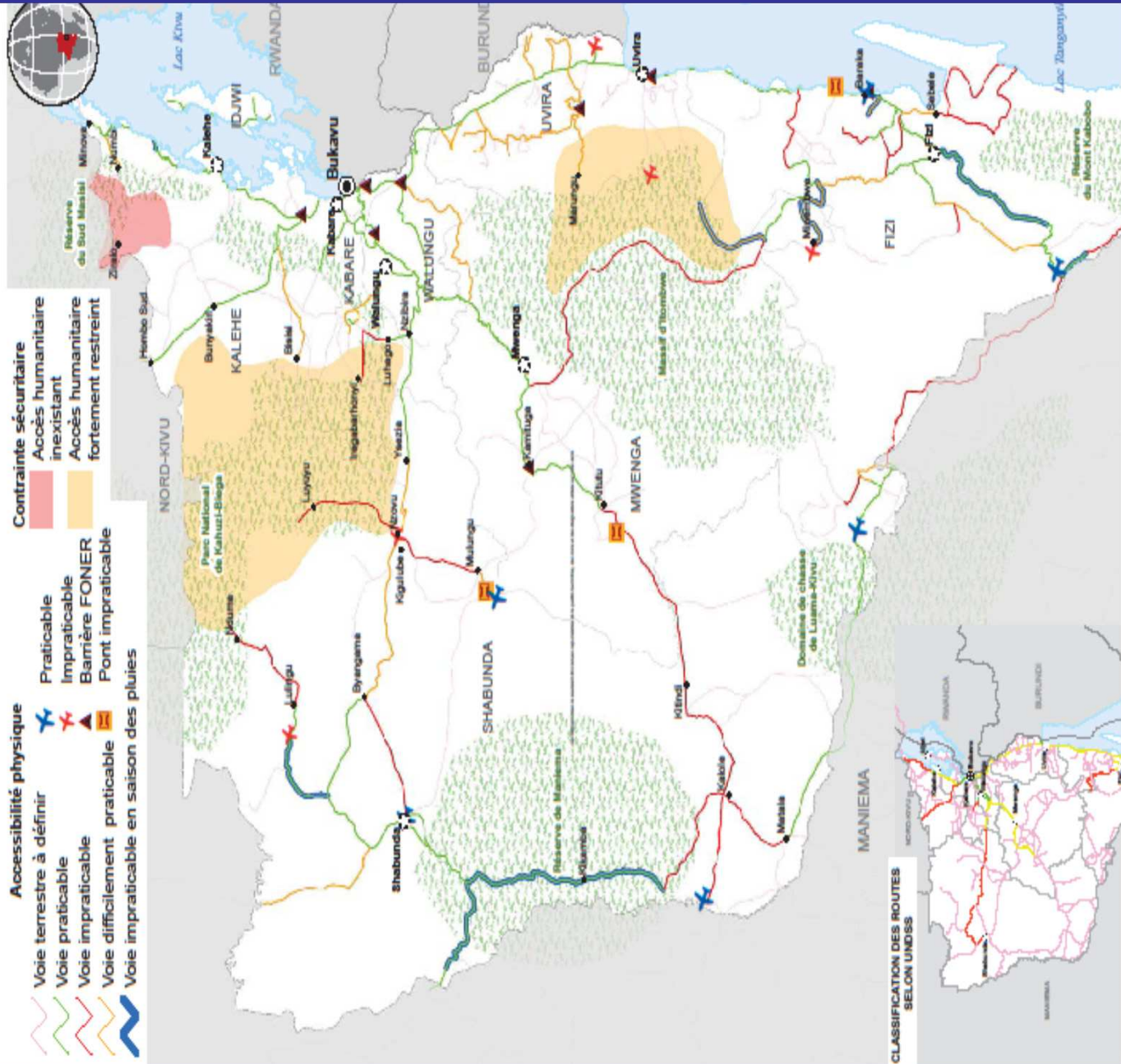
Analysis protection incidents 1st semester 2012

14 August 2012

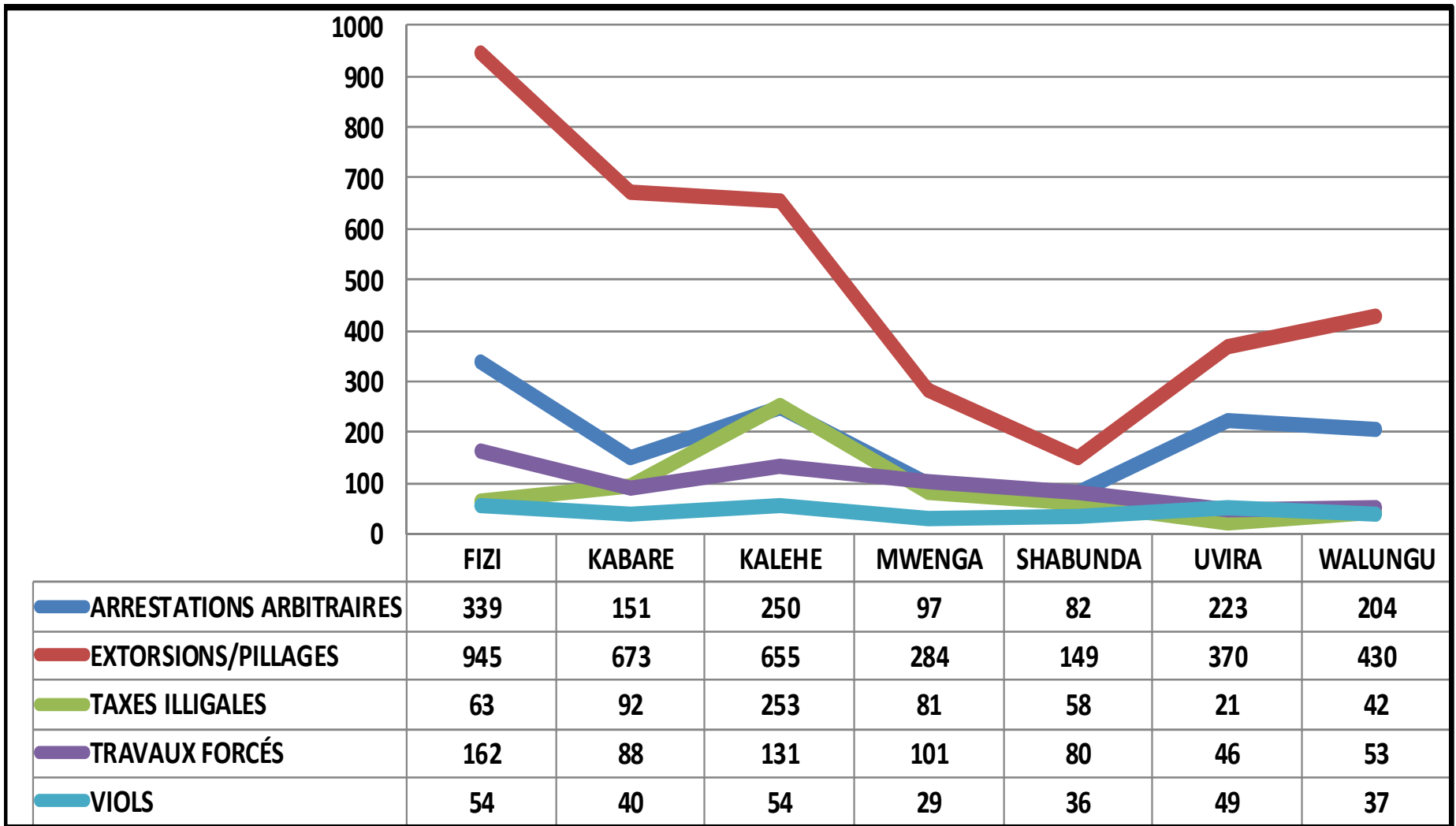


Overview

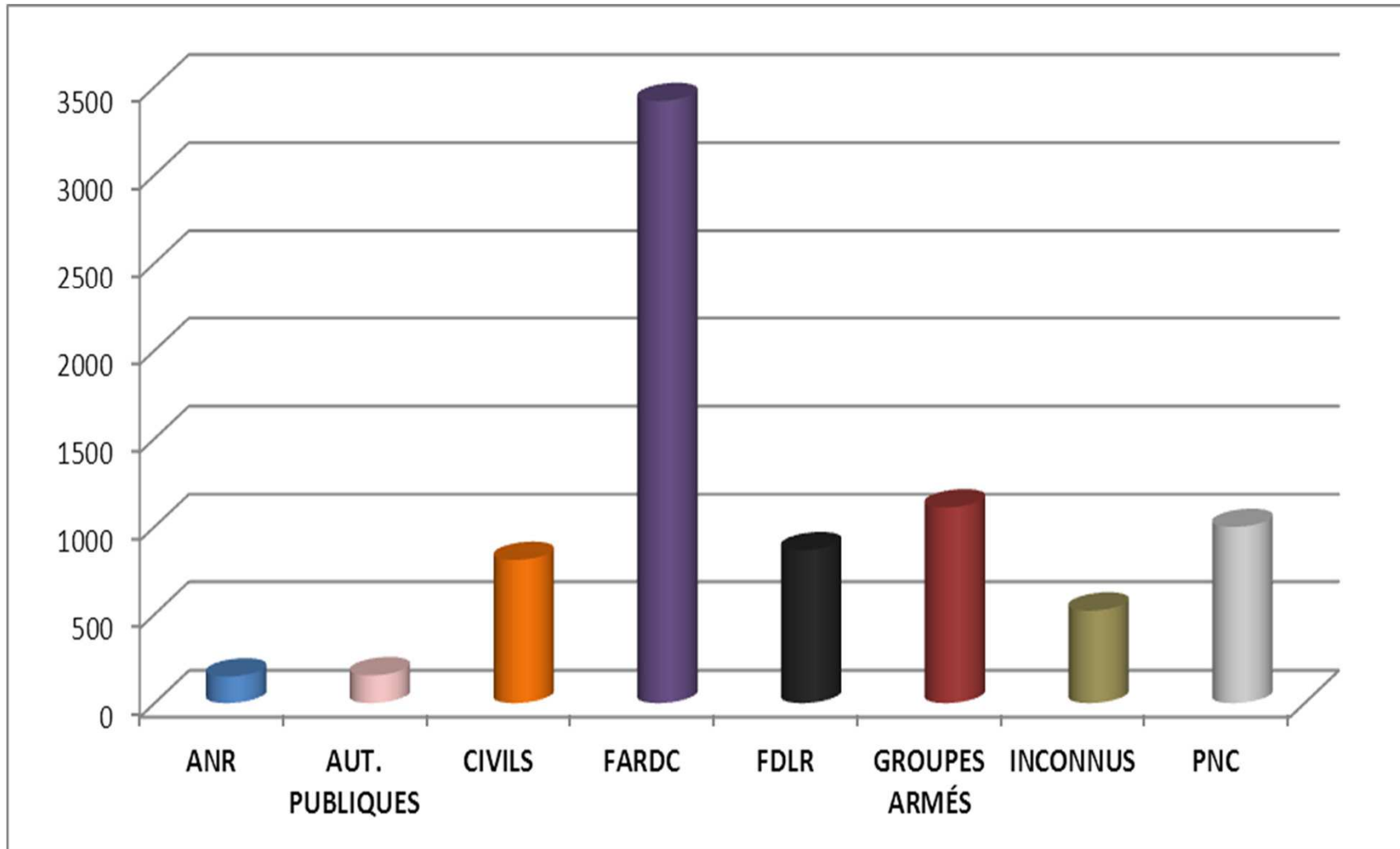
- Data collection: only primary sources
- Coverage in South Kivu: 70%
- 128 staff for monitoring (2011: 99)
- 8,028 incidents collected (2011: 6,180)
- 30 weekly detailed protection reports
- Flash reports



Tendance per territory



Perpetrators



Perpetrator profile 2012




- 43% incidents by FARDC
- FARDC: 69% of all illegal tax/forced labor
- Civilians: 46% of all rapes
- FDLR: 46% of all homicides
- FDLR: 52% of all arsons

Victim profile 2012

- 58% local population
- 22% IDPs
- 16% IDP returnees

- 69% of victims are men (18-59 yrs)
- 52% of rape victims: girls (0-17 yrs)

Comparison to 1st semester 2011

-  incidents: 23%
-  rape incidents: 44%
-  homicide: 47%

Comparison to 1st semester 2011

- Activities armed groups: ↑ 6%
- Activities FDLR: ↓ 7%
- Activities unknown: ↓ 5%
- Activities PNC: ↑ 3%

Comparison 1st semester 2011

- Victims local population:  24%
- Victims IDPs:  17%
- Victims IDP returnees:  8%
- Rape victims 0-17 yrs:  19%

Comparison to 1st semester 2011

	2011	2012
Homicide	Uvira	Kalehe
Rape	Fizi	Kalehe
Extorsion/looting/ theft	Kalehe	Fizi
Illegal tax/forced labour	Kalehe	Kalehe
Arbitrary arrest	Kabare	Fizi
Physical assault	Uvira	Fizi

Conclusion

- FDLR less incidents, but most violent crimes
- FARDC « poverty crimes »
- Armed groups more active
- Fizi and Kalehe most affected
- More minors victims of rape
- More IDP/IDP returnees victims of incidents