

# UN-Habitat City & Neighbourhood Profiles

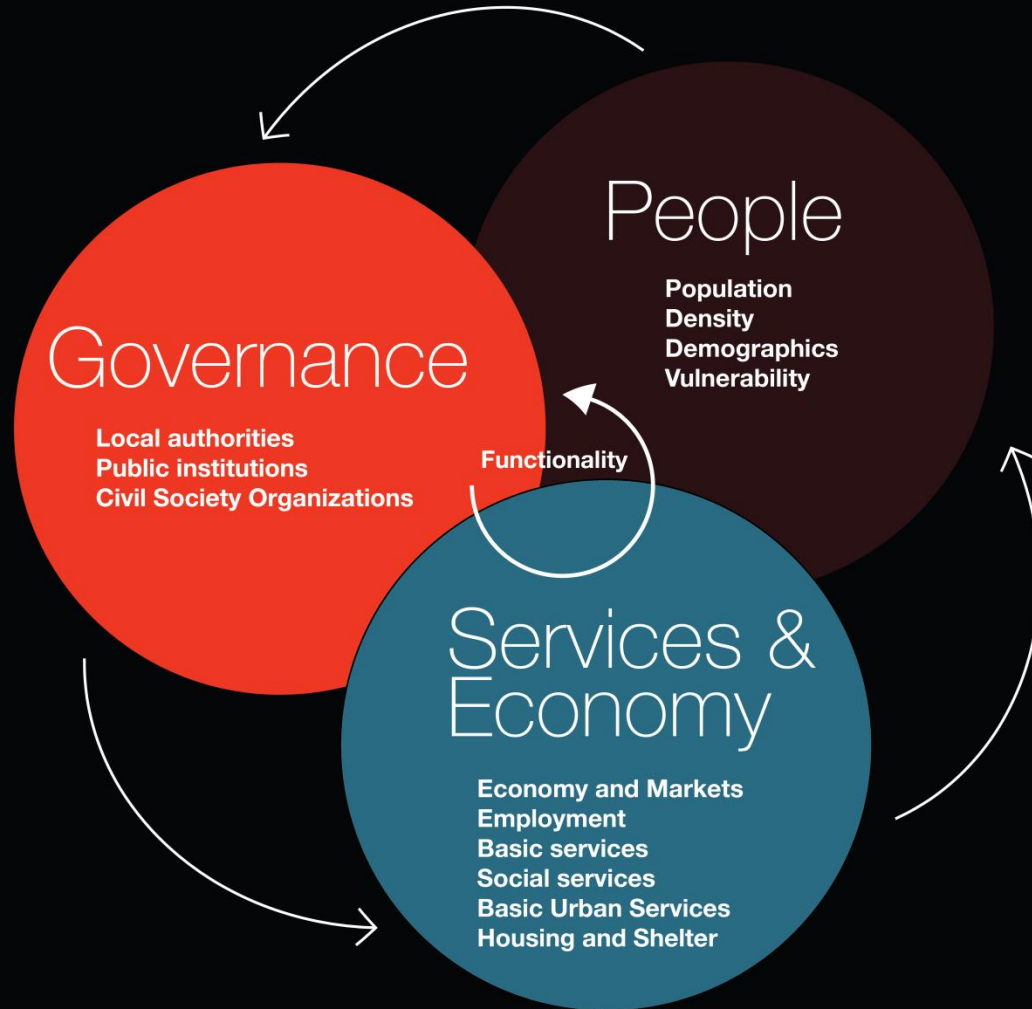
Information Management WG

27 Apr 2016

# Why Urban Analysis?

- To highlight **unmet urban needs**
- To add **spatiality** to understanding of vulnerabilities
- To foster responses that are **integrated** [cross-sectoral, cross-cohort] around given areas
- To understand **data collection/management in urban settings**

# SPACE



# What is a Profile?

- Holistic & multi-sectoral description & analysis of defined areas
- Assesses urban capacity to respond to stresses of refugee crisis



# What is a Profile?

- Holistic & multi-sectoral description & analysis of defined areas
- Assesses urban capacity to respond to stresses of refugee crisis

## City Profile

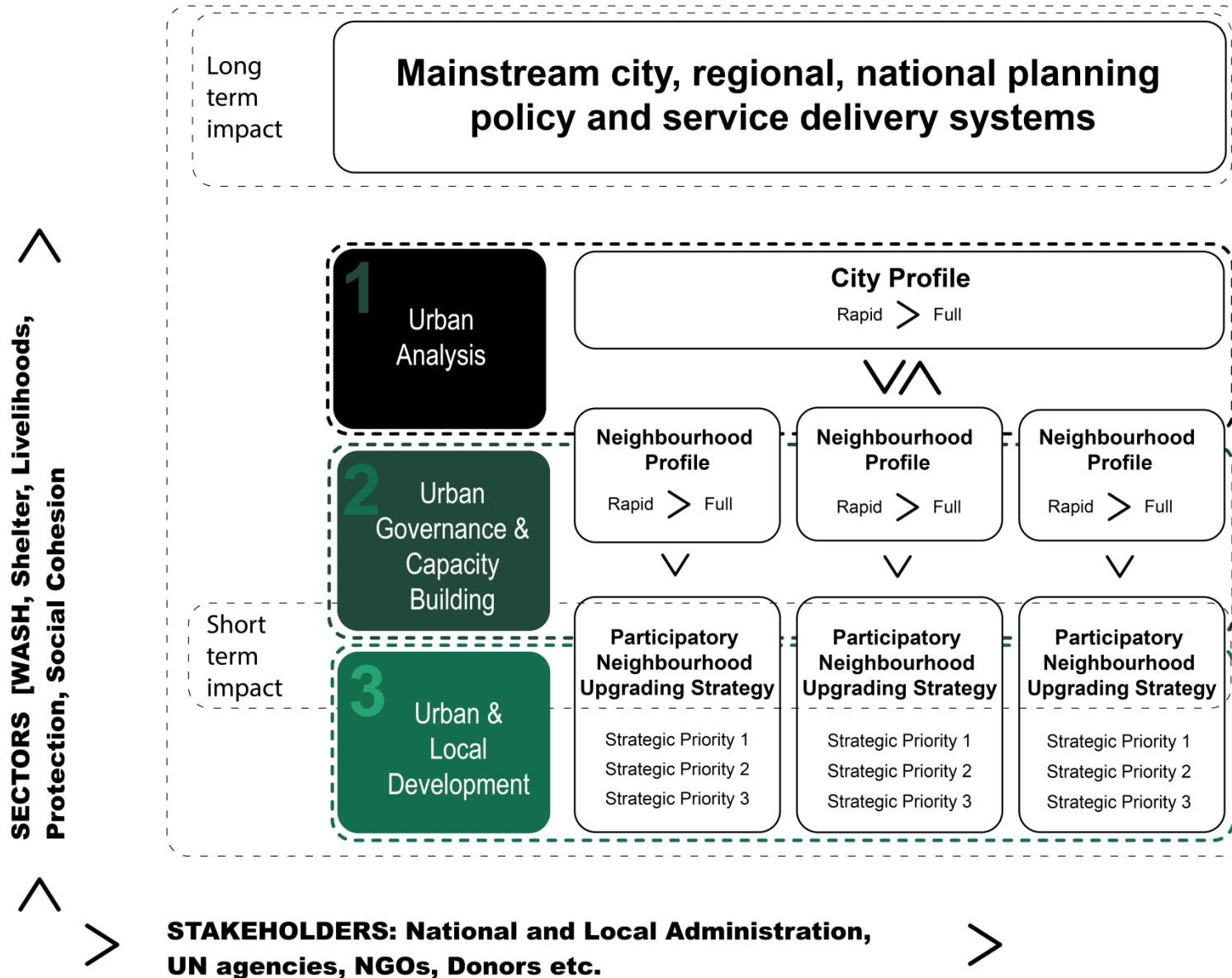
- + Generates implications for mainstream planning & infra policy
- Metropolitan scale
- Strategic level
- Orientated to continuous analysis
- Desk-based
- Timeframe 3 months

## Neighbourhood Profile

- + Underpins identification of local priorities for upgrading
- N'hood / sub-n'hood scale
- Local level
- Orientated to action
- Field-based
- Timeframe 2 months
  - + 1 month for Neighbourhood Upgrading Strategy



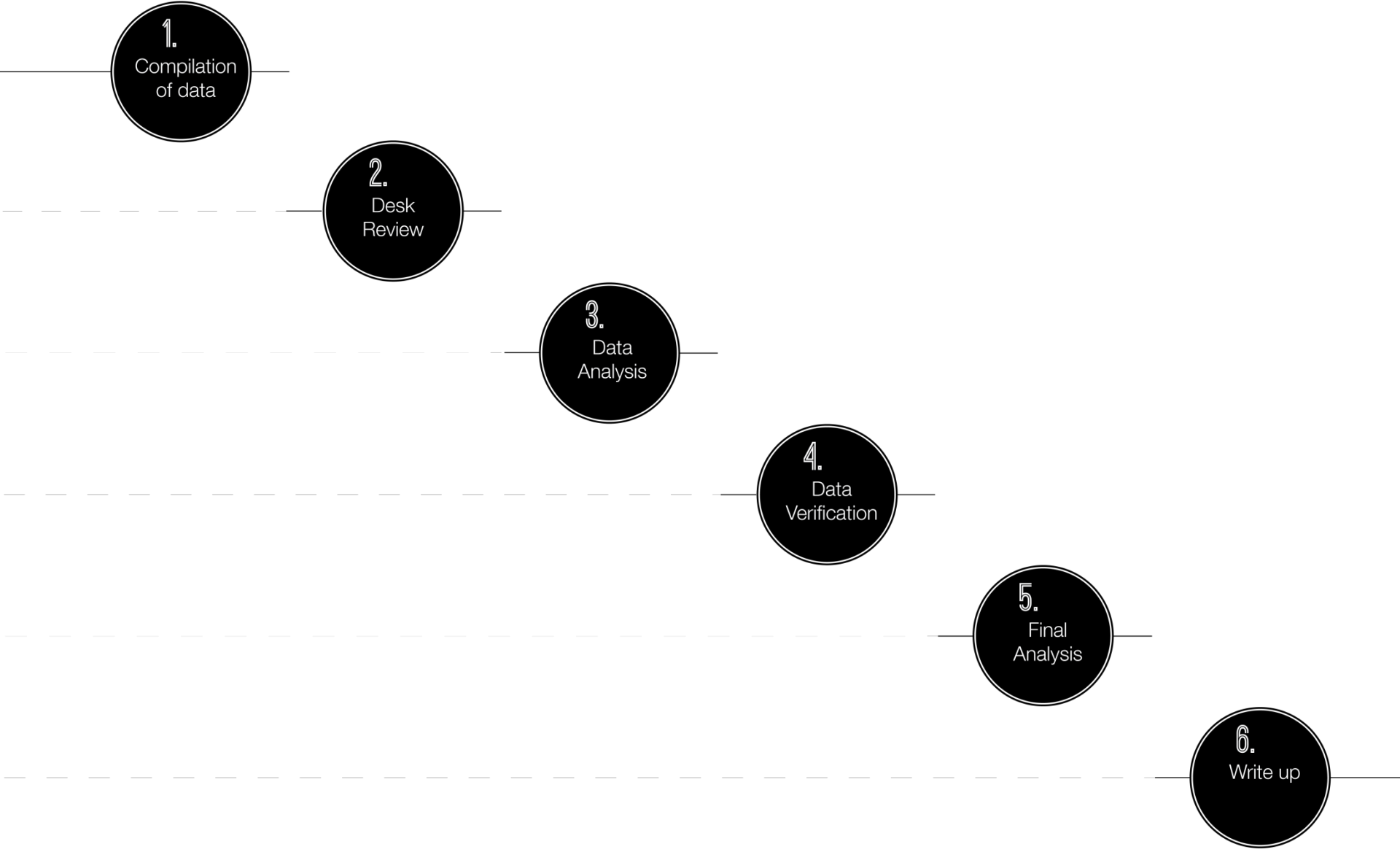
# Urban Crisis Response and building Urban Resilience



# Profile Audiences & Uses

- UN Agencies
- NGOs
- Donors
- Ministries & other public administration
- Municipalities / Union
- Academic Institutions
- Private Sector
- Communities

# Methodological steps





# Tripoli City Profile



Space \_ Governance \_ People \_ Services

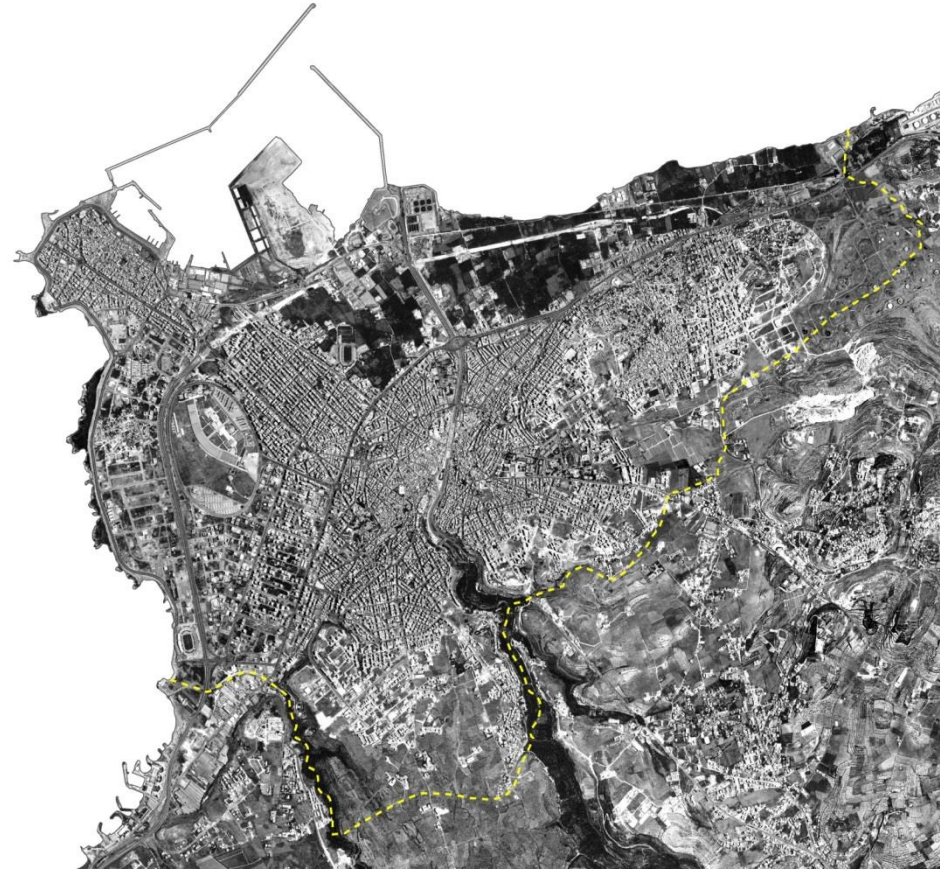
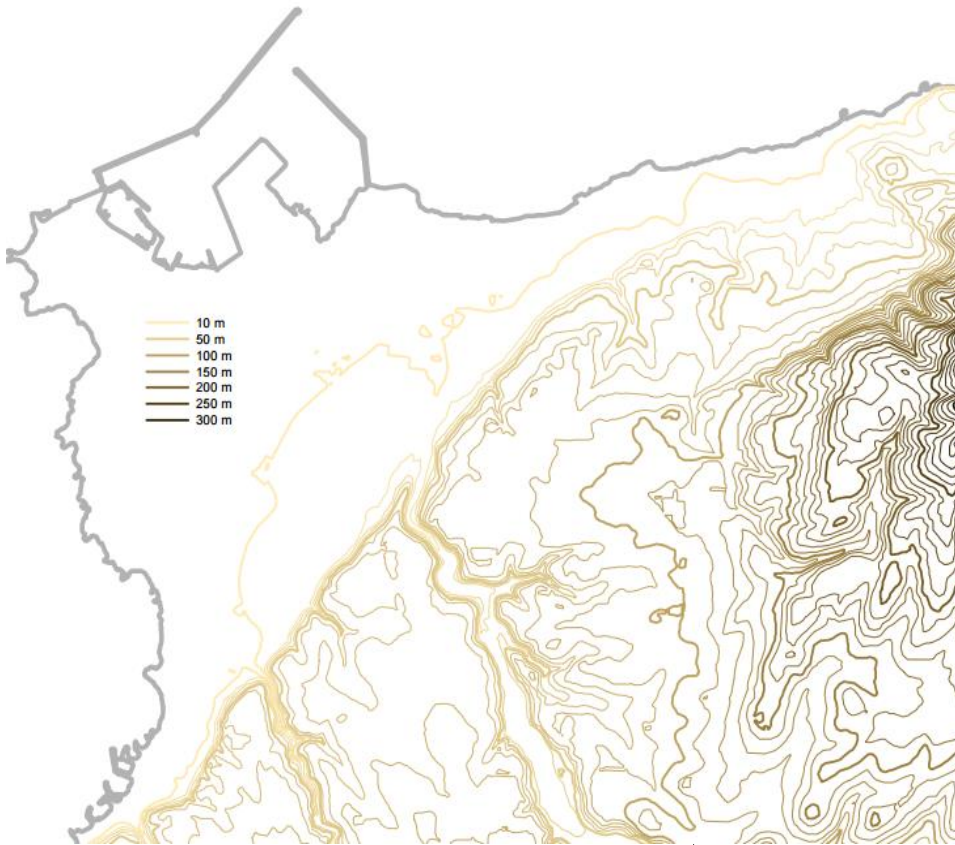
# Space & Governance

# Tripoli Metropolitan Area

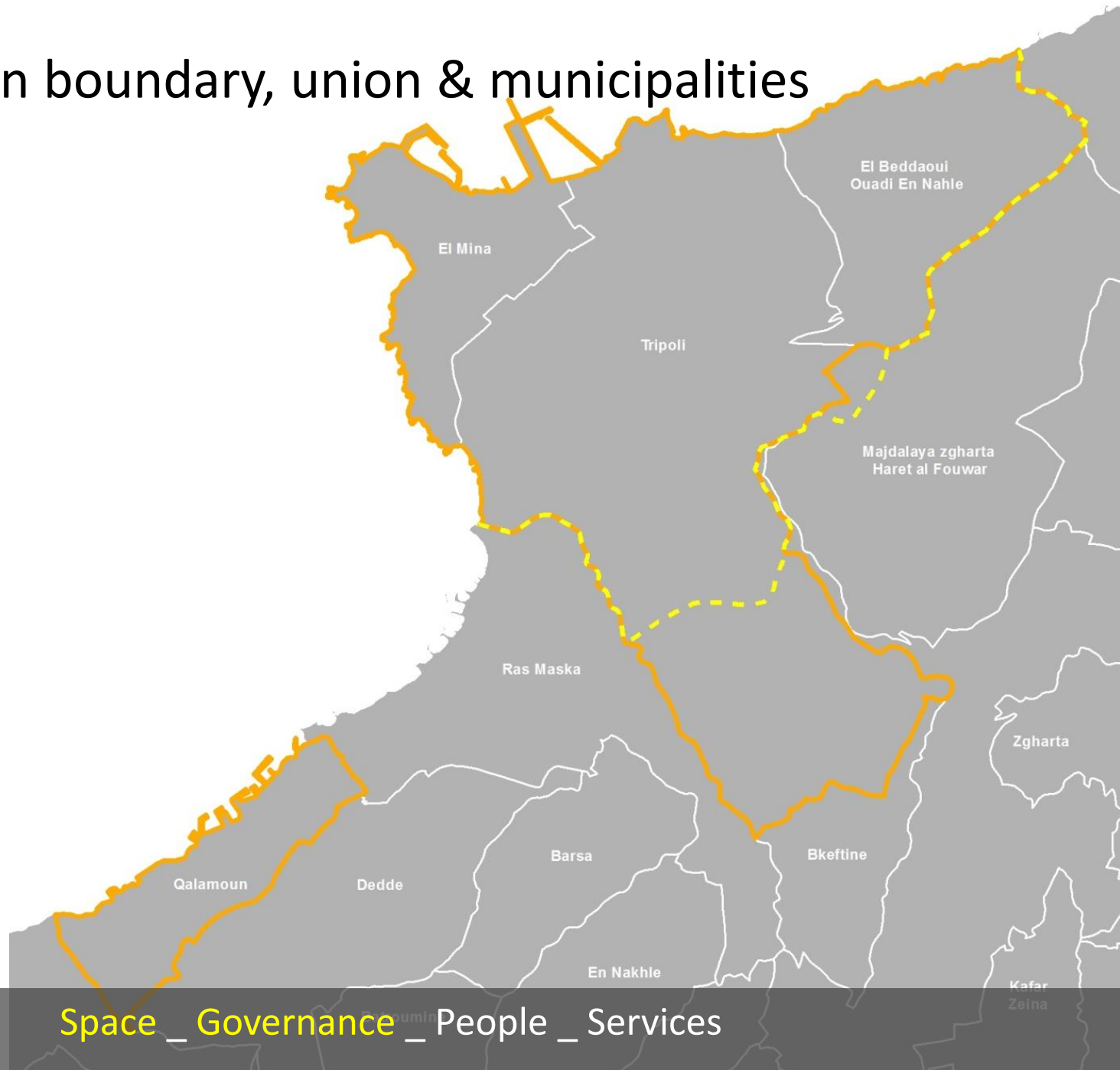


Space \_ Governance \_ People \_ Services

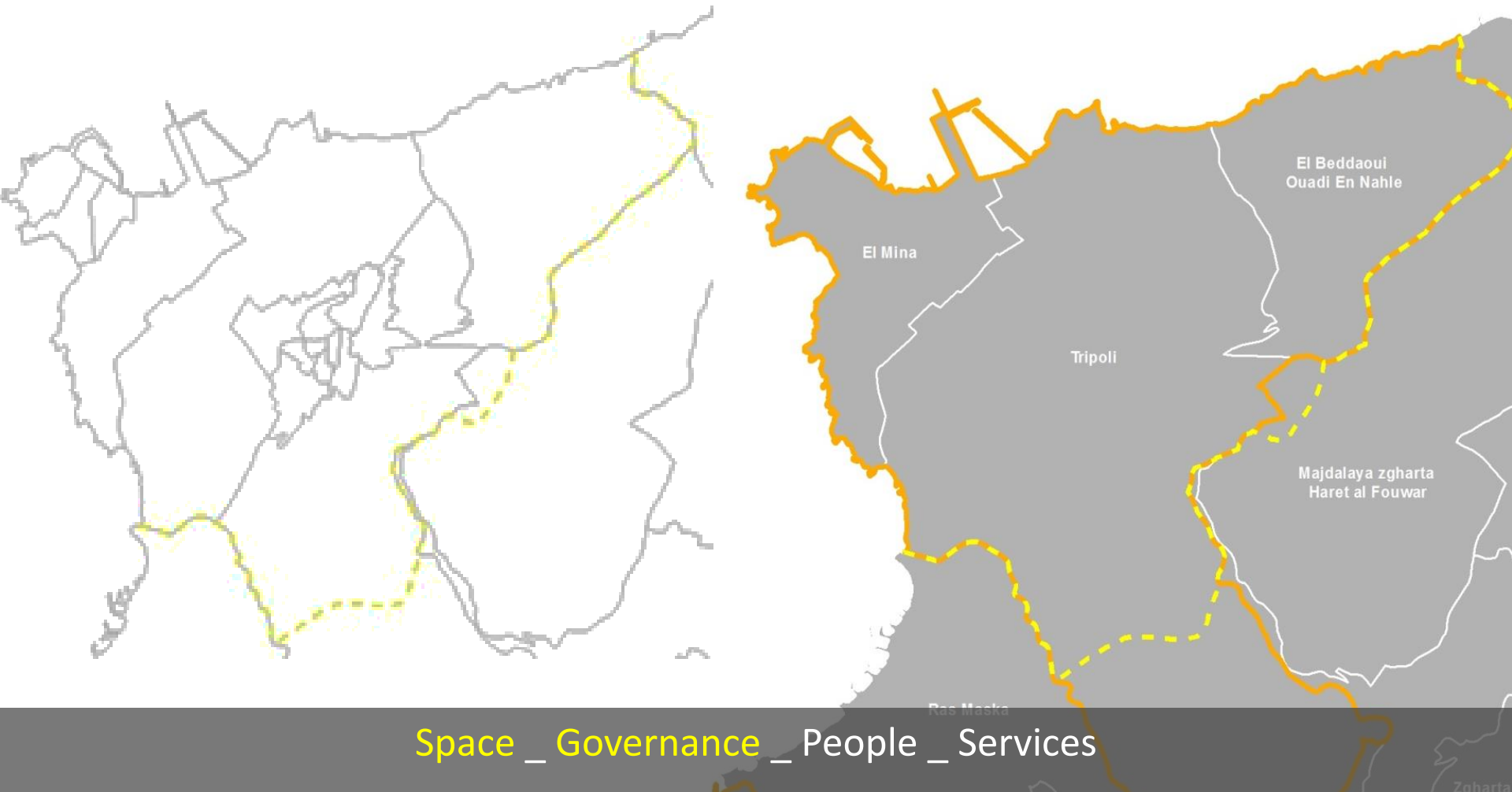
# Tripoli Metropolitan Area



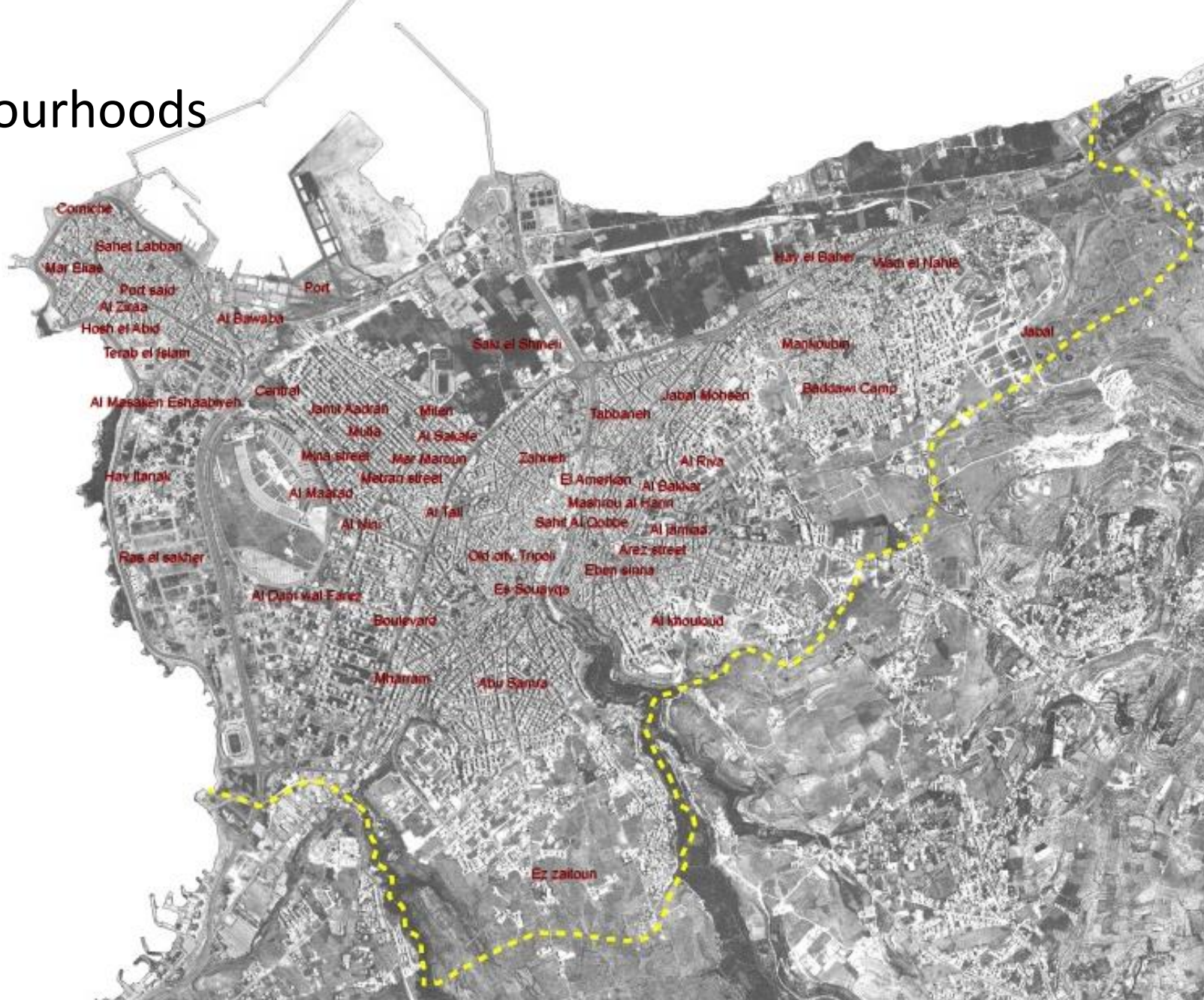
# Metropolitan boundary, union & municipalities



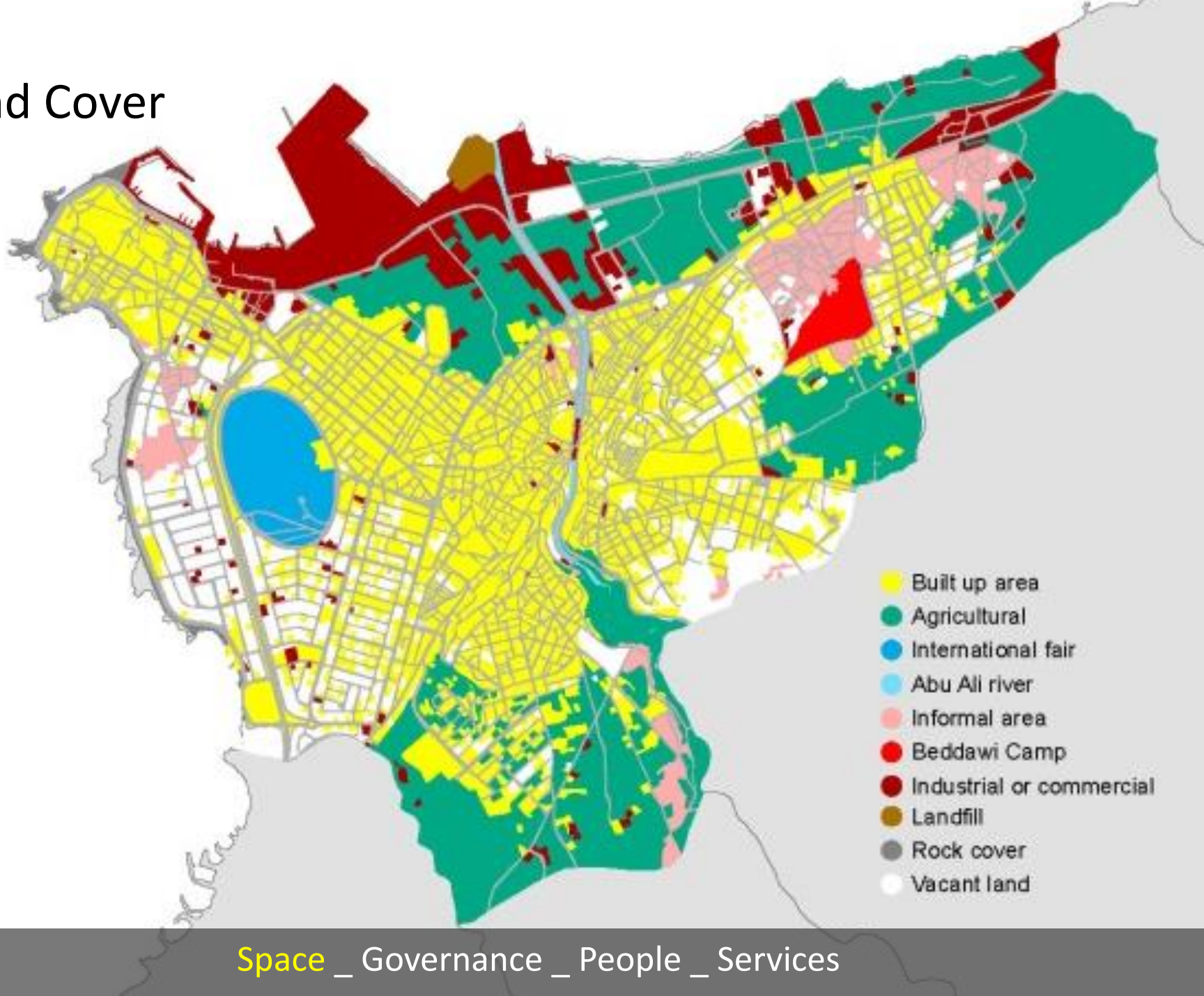
# Metropolitan boundary & cadastres



# Neighbourhoods



# Land Cover





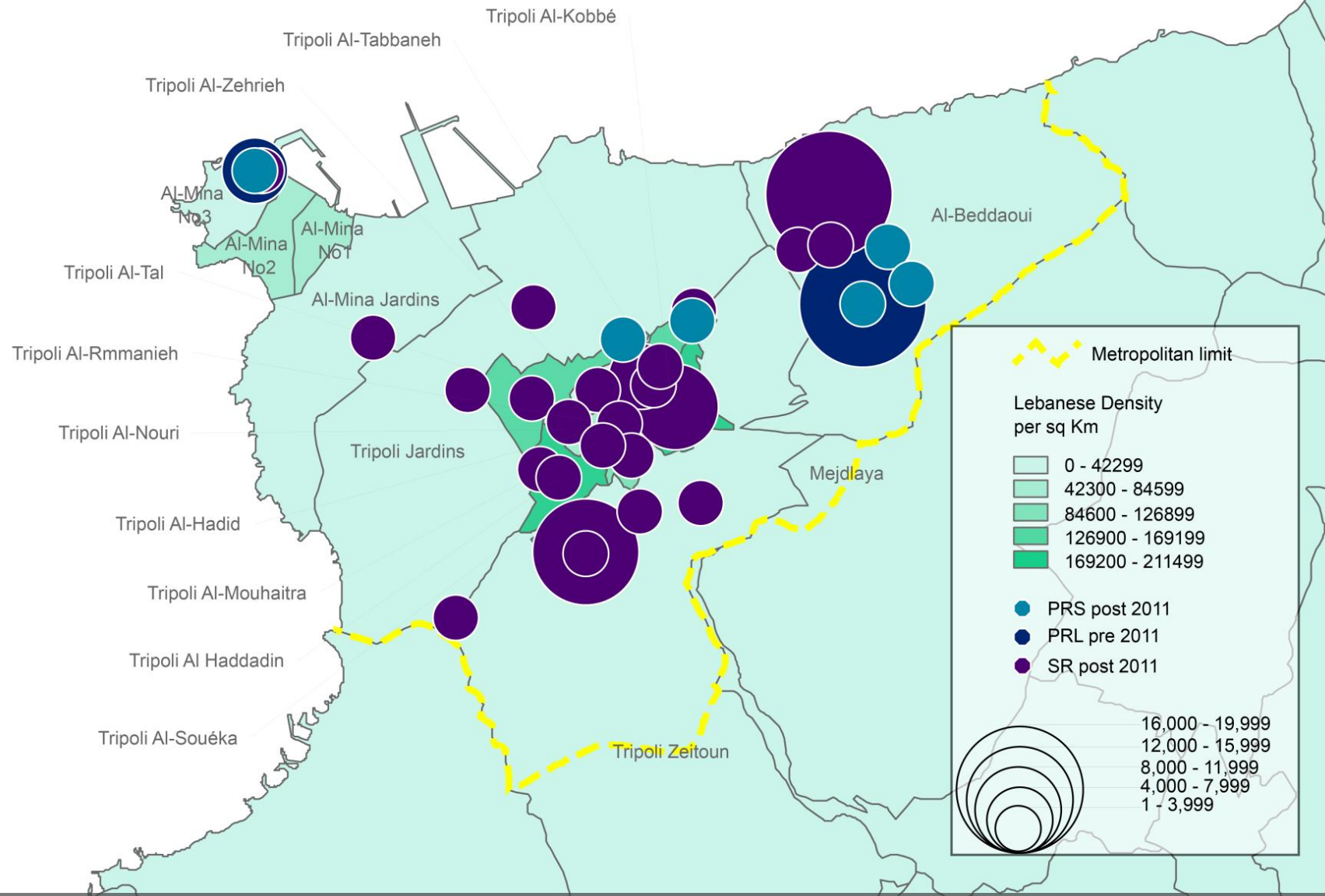
# People

# Population Calculations

Tripoli

Source	Pop Group	Pop Sub-group	Number	
			Sub-total	Total
UNDP [Adopted by all aid agencies]	Lebanese 1997			<b>287,531</b>
Al Fayhaa Union of Municipilaties	All Residents 2015			<b>365,381</b>
UN-Habitat	Lebanese 2014		<b>417,657</b>	
		<i>Syrian Refugees</i>	68,334	
		<i>PRL</i>	30,335	
		<i>PRS</i>	3,867	
		Total Refugees	102,536	
				<b>520,193</b>

# Lebanese Pop Density & Refugee Distribution



# Services

# Services

## Economy, Services, Infrastructure

- Economy
  - General economy; socio-economy
  - Livelihoods
- Basic Urban Services
  - Housing, shelter & tenure
  - Water
  - Energy
  - Drainage
  - Electricity
  - Sewage & Wastewater
  - Solid Waste
- Social Services
  - Health
  - Education
  - Social Stability
  - Food Security
  - Protection

# Services

## Economy, Services, Infrastructure

- Economy
  - General economy; socio-economy
  - Livelihoods
- Basic Urban Services
  - Housing, shelter & tenure
  - Water
  - Energy
  - Drainage
  - Electricity
  - Sewage & Wastewater
  - Solid Waste
- Social Services
  - Health
  - Education
  - Social Stability
  - Food Security
  - Protection

## Structure

1. Services & providers
2. Needs
3. Activities reported
4. Challenges

# Services

## Economy, Services, Infrastructure

- Economy
  - General economy; socio-economy
  - Livelihoods
- Basic Urban Services
  - **Housing, shelter & tenure**
  - Water
  - Energy
  - Drainage
  - Electricity
  - Sewage & Wastewater
  - Solid Waste
- Social Services
  - Health
  - **Education**
  - Social Stability
  - Food Security
  - Protection

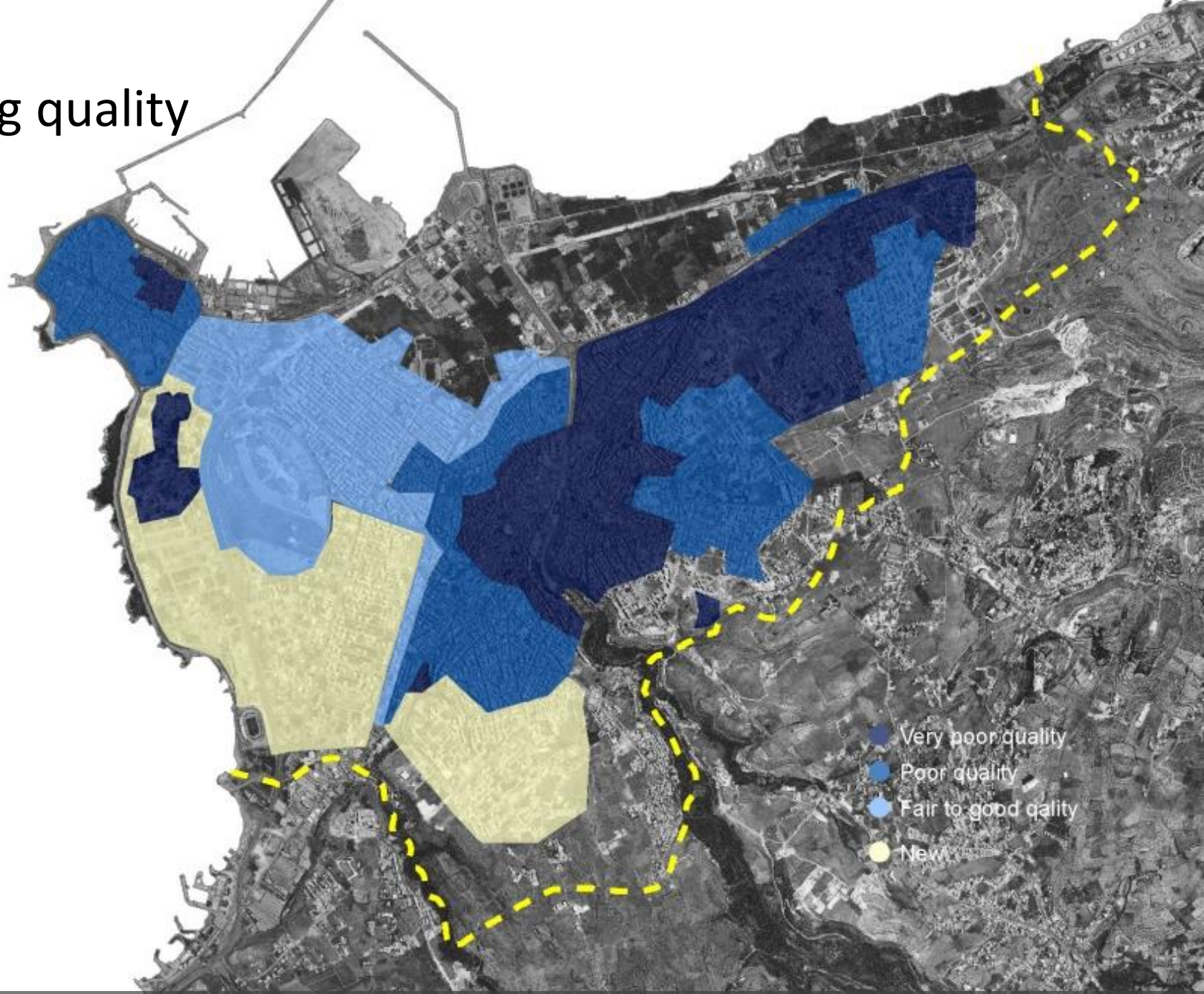
## Structure

1. Services & providers
2. Needs
3. Activities reported
4. Challenges

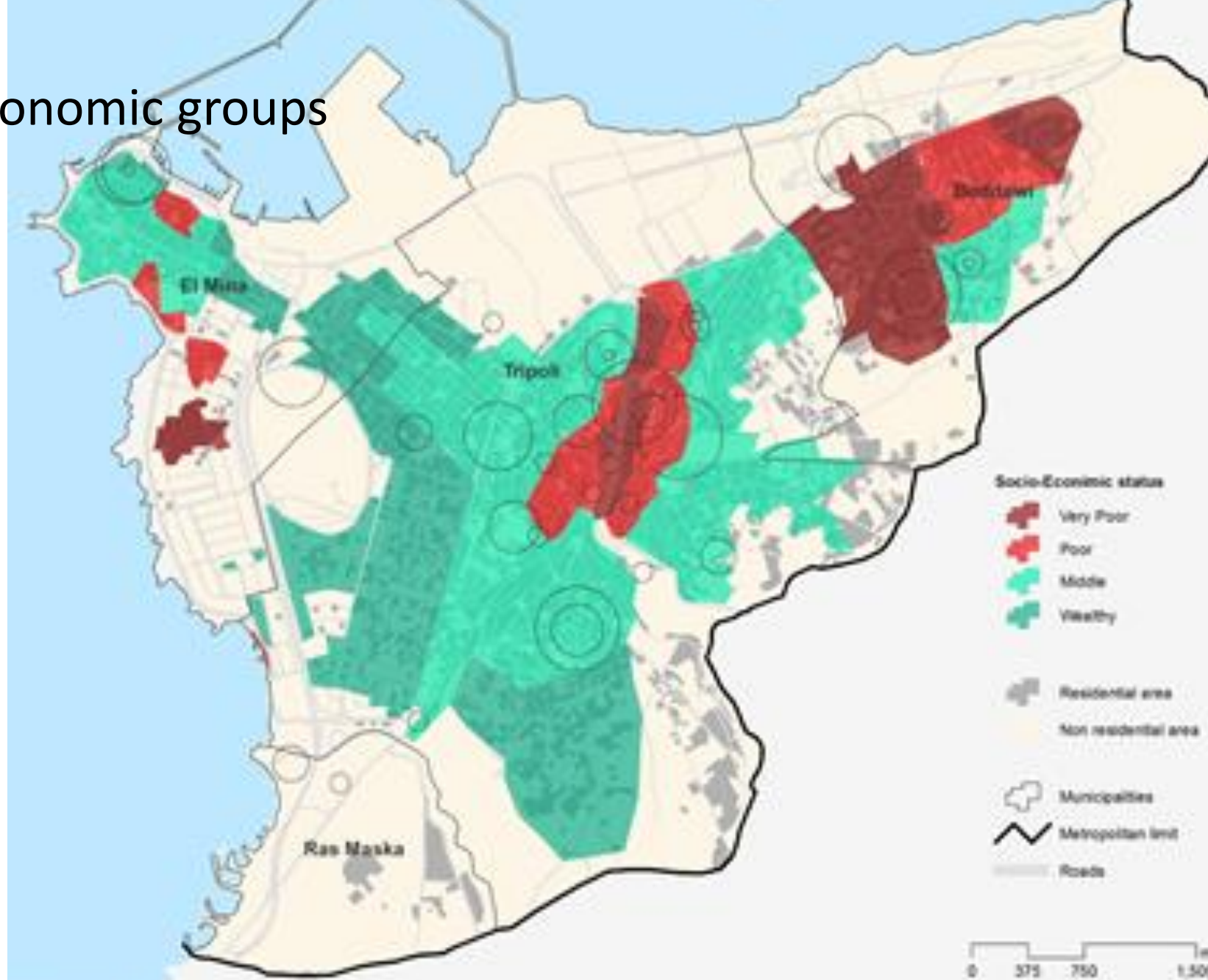
# Services



# Building quality



# Socio-economic groups



# Activity Info – Shelter 2015

Row Labels	Beddaoui	Mina N 1	Trablous El-Haddadine, El-Hadid, El-Mhartta	Trablous et Tabbaneh	Trablous Et- Tell	Trablous Ez-Zahrieh	Trablous Ez-Zeitoun	Grand Total
<b>Individuals</b>	<b>1968</b>	<b>20</b>	<b>20</b>	<b>233</b>	<b>5</b>	<b>10</b>	<b>36</b>	<b>2292</b>
▫ <b>Rehab of unoccupied shelter</b>	<b>235</b>						<b>36</b>	<b>271</b>
AffLeb - # of individuals benefitted from rehabilitations of unoccupied unfinished houses	2						0	2
DisSyr - # of individuals benefitted from rehabilitations of unoccupied unfinished houses	183						36	219
LebRet - # of individuals benefitted from rehabilitations of unoccupied unfinished houses	0							0
PRS - # of individuals benefitted from rehabilitations of unoccupied unfinished houses	50						0	50
▫ <b>Rehab unoccupied structures into CC</b>	<b>0</b>							<b>0</b>
DisSyr - # of individuals benefitted from unoccupied Collective Center rehabilitation	0							0
▫ <b>Rehabilitation of occupied shelter</b>	<b>884</b>	<b>20</b>	<b>20</b>	<b>8</b>	<b>5</b>	<b>10</b>		<b>947</b>
AffLeb - # of individuals benefitted from rehabilitation of occupied unfinished houses/shelter units	137		0	0		0		137
DisSyr - # of individuals benefitted from rehabilitation of occupied unfinished houses/shelter units	625		20	8		10		663
LebRet - # of individuals benefitted from rehabilitation of occupied unfinished houses/shelter units	0	20	0	0	5	0		25
PRL - # of individuals benefitted from rehabilitation of occupied unfinished houses/shelter units	122		0	0		0		122
PRS - # of individuals benefitted from rehabilitation of occupied unfinished houses/shelter units	0		0	0		0		0
▫ <b>Site/infrastruct. improvement- informal gatherings</b>				<b>225</b>				<b>225</b>
PRL - # of individuals benefitted from Site or infrastructure improvement of informal gatherings and informal urban areas				25				25
PRS - # of individuals benefitted from Site or infrastructure improvement of informal gatherings and informal urban areas				200				200
▫ <b>Weatherproofing IS</b>							<b>0</b>	<b>0</b>
LebRet - # of individuals benefitted from weatherproofing of Informal Settlements							0	0
▫ <b>Weatherproofing of substandard buildings</b>	<b>849</b>							<b>849</b>
AffLeb - # of individuals benefitted from weatherproofing of substandard buildings (unfinished houses, garages worksites etc.)	75							75
DisSyr - # of individuals benefitted from weatherproofing of substandard buildings (unfinished houses, garages worksites etc.)	768							768
PRL - # of individuals benefitted from weatherproofing of substandard buildings (unfinished houses, garages worksites etc.)	6							6
<b>Grand Total</b>	<b>1968</b>	<b>20</b>	<b>20</b>	<b>233</b>	<b>5</b>	<b>10</b>	<b>36</b>	<b>2292</b>

# Education

## Covers

- Public Schools
- Free private schools
- UNWRA schools
- [Private schools]

## Data approach

- Literature review
- UNHCR & UNICEF Education Focal Points [Tripoli]
- Phone survey – data gap-filling
  - Physical capacity
  - Registered students
  - Syrian presence?
  - Shifts?
  - Curriculum (Leb / ALP)
- Verification with Focal Points

Labels	Beddaoui	Mina Jardin	Mina N 1	Trablous et Tabbaneh	Trablous Et-Tell	Trablous Ez-Zahrieh	Trablous Ez-Zeitoun	Grand Total
<b>children</b>	<b>1392</b>	<b>7</b>	<b>46</b>	<b>38</b>	<b>7</b>	<b>8</b>	<b>40</b>	<b>1538</b>
<b>Activity 1.2.1 Covering public school 1st shift</b>	<b>926</b>	<b>7</b>			<b>7</b>	<b>8</b>	<b>40</b>	<b>988</b>
AffLeb - # of children enrolled in 1st shift	18	7					40	65
LebRet - # of children enrolled in 1st shift	0							0
PRL - # of children enrolled in 1st shift	0							0
PRS - # of children enrolled in 1st shift	908				7	8		923
<b>Activity 1.2.2 Covering public school 2nd shift</b>	<b>216</b>							<b>216</b>
PRL - # of children enrolled in 2nd shift	0							0
PRS - # of children enrolled in 2nd shift	216							216
<b>Activity 1.5.2 Community ECE</b>	<b>250</b>		<b>46</b>	<b>38</b>				<b>334</b>
AffLeb - # of children enrolled in community based ECE	56		46	24				126
DisSyr - # of children enrolled in community based ECE	67		0	14				81
LebRet - # of children enrolled in community based ECE	0		0	0				0
OthPop - # of children enrolled in community based ECE	0		0	0				0
PRL - # of children enrolled in community based ECE	74		0	0				74
PRS - # of children enrolled in community based ECE	53		0	0				53
<b>individuals</b>	<b>469</b>		<b>230</b>				<b>15</b>	<b>714</b>
<b>Activity 1.9.2 Training for Youth</b>	<b>469</b>		<b>230</b>				<b>15</b>	<b>714</b>
# of adolescents accessing training	469		230				15	714
<b>Grand Total</b>	<b>1861</b>	<b>7</b>	<b>276</b>	<b>38</b>	<b>7</b>	<b>8</b>	<b>55</b>	<b>2252</b>

# Neighbourhood Profiles

# Neighbourhood Selection Methodology

1. Formulate comprehensive list of neighbourhoods
2. Populate neighbourhoods with cadastre data as far as possible
3. Supplement cadastre data with data gathered from field
4. Complete **Selection Criteria Table** in collaboration with municipalities/union
5. Jointly select neighbourhood based on
  - UN-Habitat City Profile findings
  - Selection Criteria Table
6. Verify boundary of selected neighbourhood

## Selection Criteria Table

---

- 1 Vulnerability  
Lebanese <\$4/day; Refugees (all nationalities)
  - 2 Syrian Refugee Presence
  - 3 Access to Services & Infrastructure
  - 4 Socio-economic competition / tension
  - 5 Security  
Access to field
-



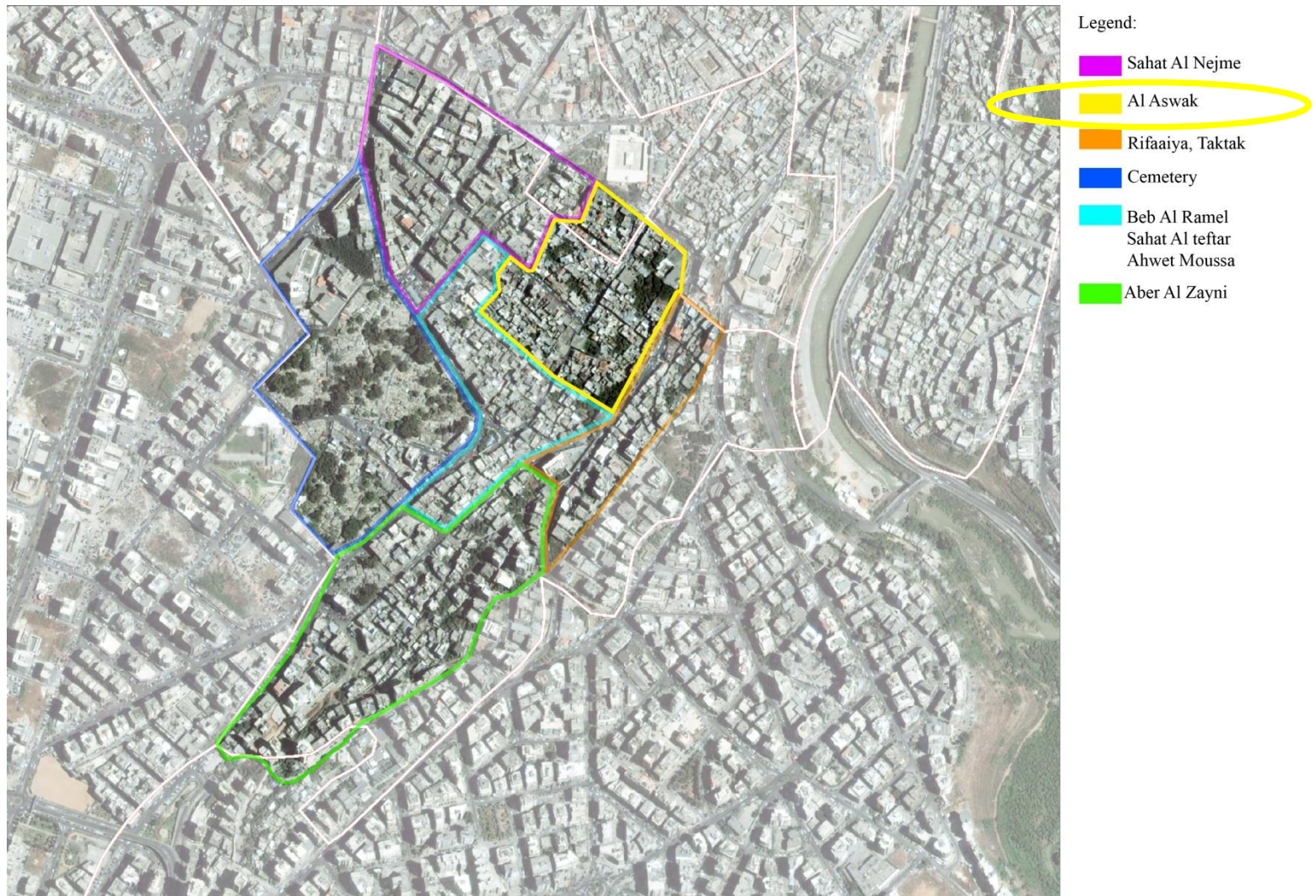
# Al Haddadine Cadastre, Tripoli

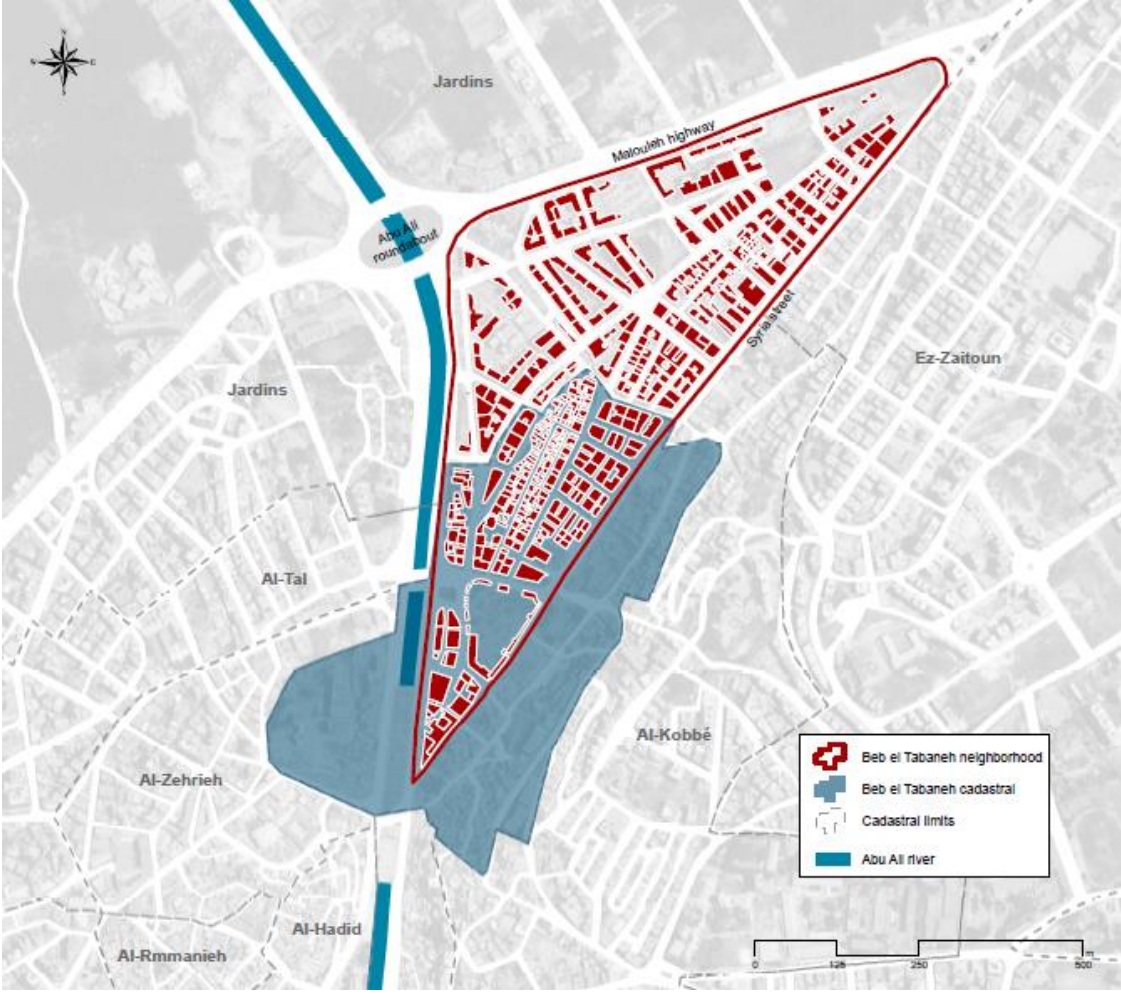


Legend:

- Sahat Al Nejme
- Al Aswak
- Rifaiiya, Taktak
- Cemetery
- Beb Al Ramel  
Sahat Al tefar  
Ahwet Moussa
- Aber Al Zayni

# Al Aswak Neighbourhood, Al Haddadine Cadastre





# Bourj Hammoud - Storm + Wastewater Network Crossovers

