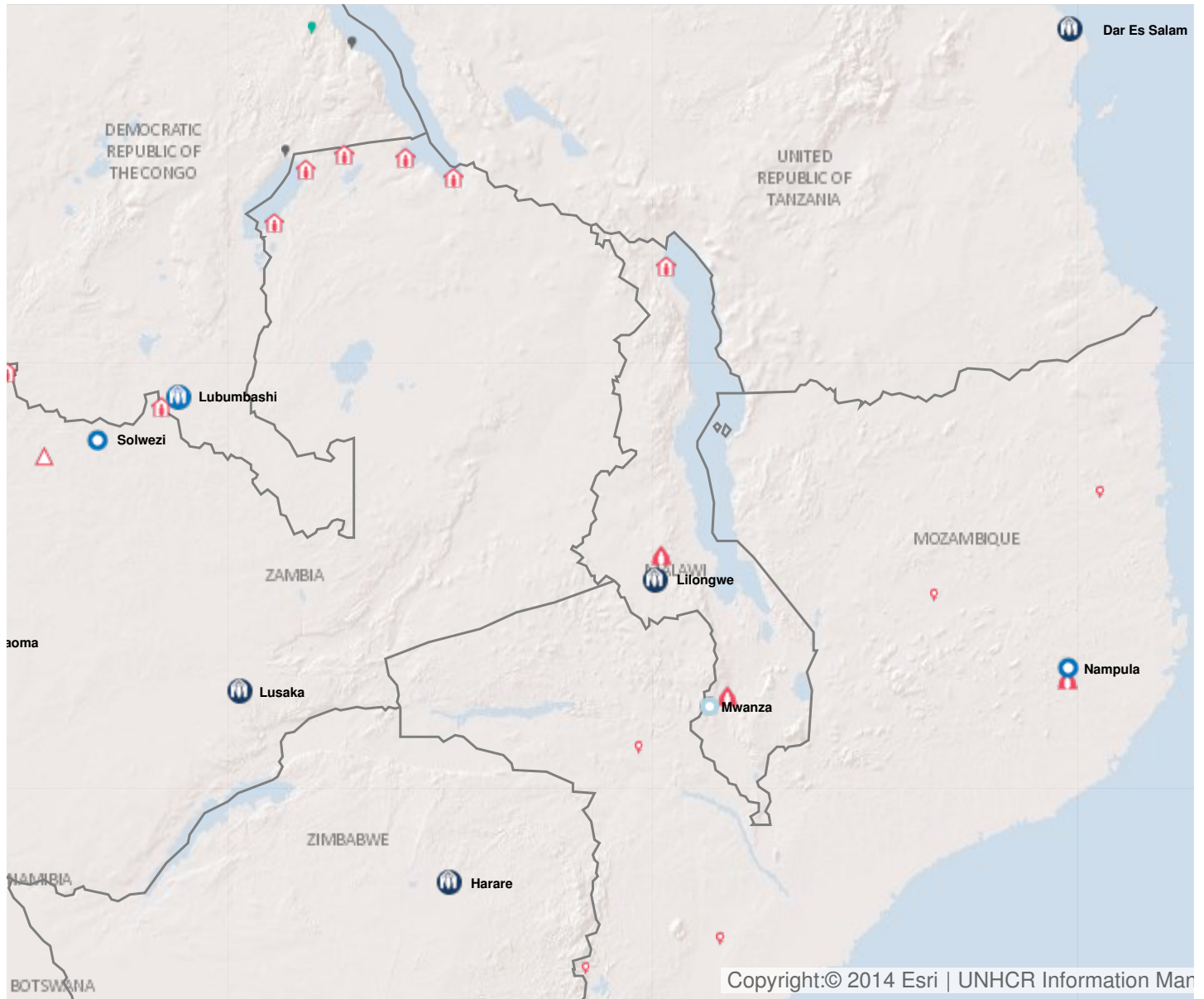


2018 Planning summary

Downloaded on 24/11/2017

Operation: Malawi

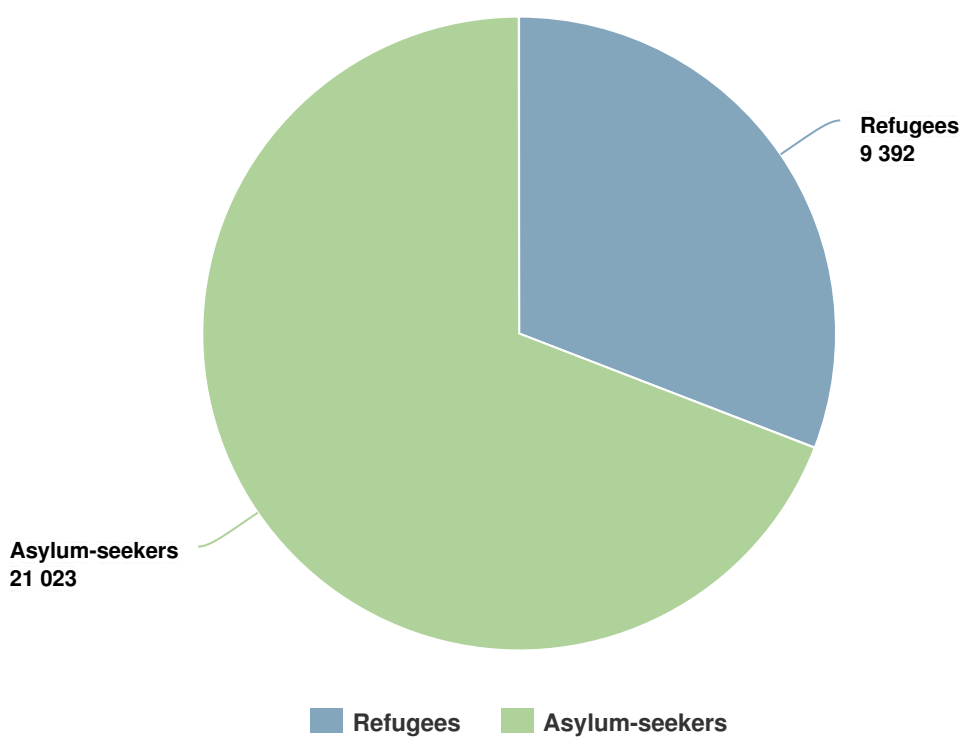


Latest update of camps and office locations **21 Nov 2016**.

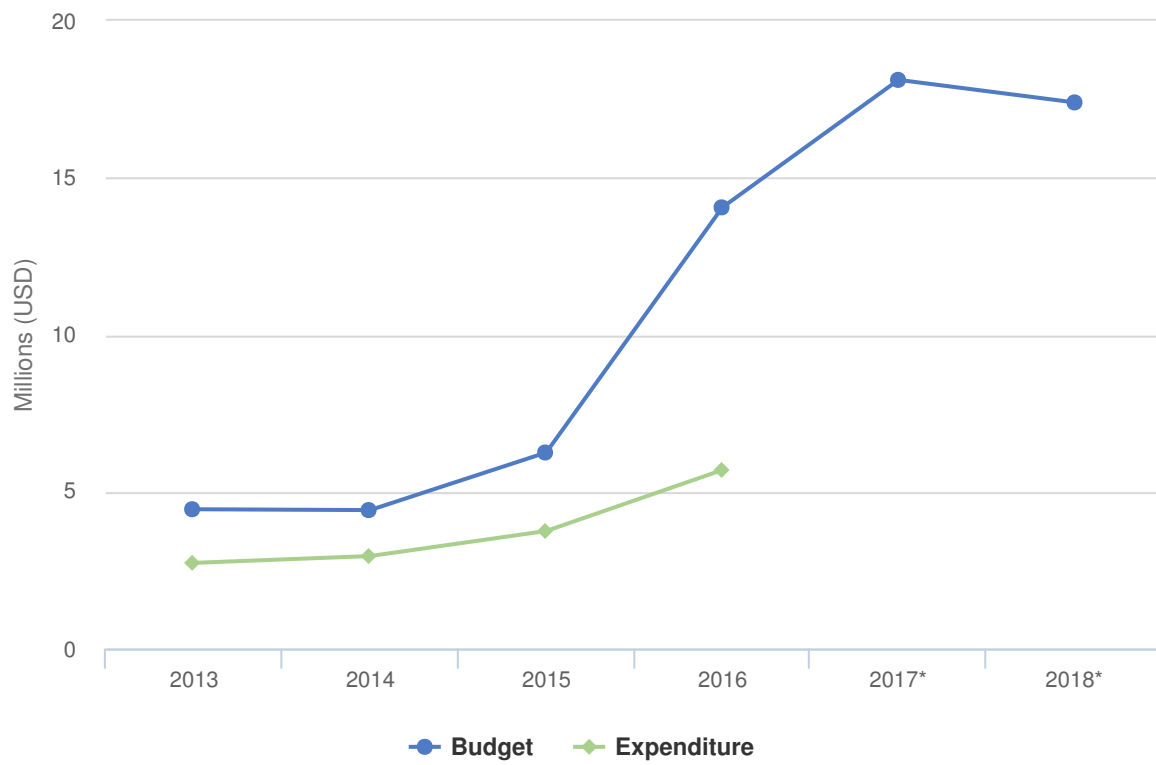
People of Concern

29% INCREASE IN
2016

2016	30,415
2015	23,489
2014	20,373



Budgets and Expenditure for Malawi



Plan Overview

2018 information for this operation will be available shortly.
