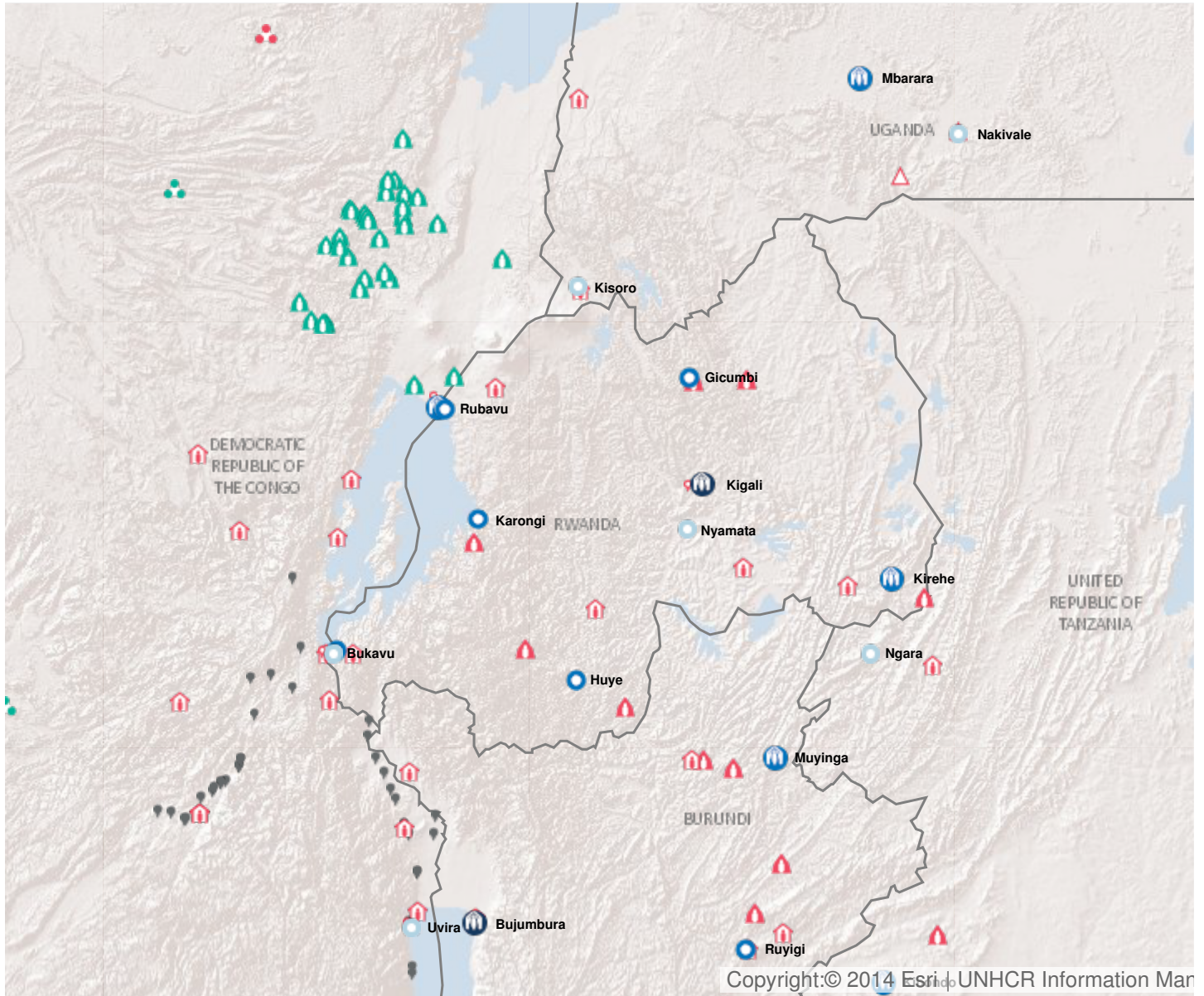


2018 Planning summary

Downloaded on 16/11/2017

Operation: Rwanda

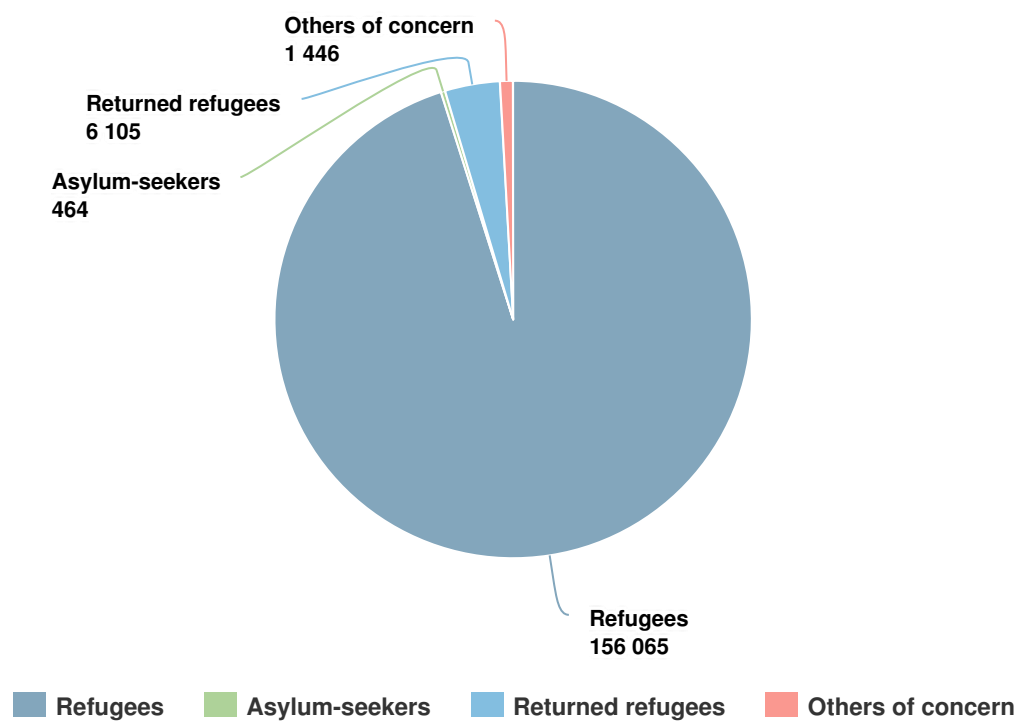


Latest update of camps and office locations 21 Nov 2016.

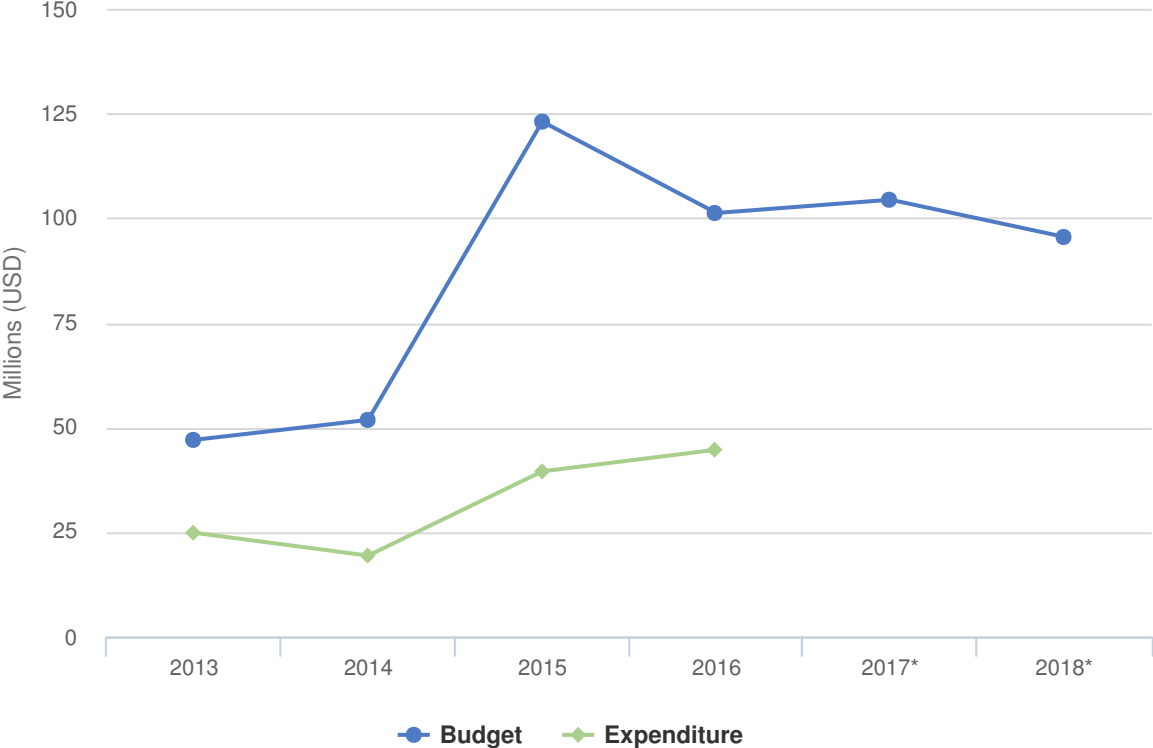
People of Concern

INCREASE IN
9% **2016**

2016	164,080
2015	151,173
2014	80,124



Budgets and Expenditure for Rwanda



Working environment

Rwanda has been hosting thousands of refugees for decades, and today is home to over 170,000 refugees and asylum-seekers mainly from Burundi and the Democratic Republic of the Congo (DRC). The Government has maintained open borders and refugees who have been allowed to settle in urban areas, with over 32,000 registered refugees living and working outside camps. The Government supports the refugee response through provision of land for reception centers and refugee camps, leads camp management and coordination, and has demonstrated progressive approach to refugees by committing to include them in national systems like health insurance and education.

UNHCR co-leads the refugee response with the Government, coordinating construction and management of camps and all protection and multisectoral assistance programmes. The refugee response includes a range of UN agencies and local and international NGO actors, as well as private sector partners. However, in five protracted Congolese camps, UNHCR and WFP are the only operational UN agencies.

While the overall security situation in Rwanda remains calm, the political instability in neighboring Burundi and eastern DRC continue to present a risk of an influx of refugees. Currently, Rwanda receives approximately 150 new refugee arrivals from Burundi per week.

Rwanda also receives thousands of Rwandan returnees each year, and UNHCR has increased its facilitation of voluntary return in advance of the end 2017 deadline for organized return agreed at the 2016 Ministerial Meeting on the Comprehensive Solutions Strategy relating to Rwandan refugees.

Key priorities

In 2018, UNHCR will focus on:

- Furthering the socio-economic inclusion of refugees and reduce dependency on humanitarian aid through a multi-year, multi-partner approach aiming to expand the integration of refugees in national systems and implementing a joint Government-UNHCR market-based livelihoods strategy to improve refugees' self-reliance and ability to live independently from humanitarian assistance;
- Continuing to advocate for access to the asylum procedure for individual asylum-seekers who are not benefiting from *prima facie* recognition and working with the Government to assure functioning asylum procedures;
- Supporting the Government to implement the commitments made at the 2016 Leaders' Summit on Refugees to integrate refugees in national systems for education, health insurance access and national documentation system;
- Forging strategic partnerships with the Government, development actors and One UN to include refugees in the national development plan and UN Development Assistance Plan;
- Promoting access to land and expanding Mahama camp to ensure that in the immediate term all refugee families live in dignified shelters. In the long term, alternatives to camps will be explored whereby some self-reliant refugees move out of camps and camps are transformed into villages, and all refugees and host communities are accessing national services.

2018 Original Budget for Rwanda | USD

The following table presents the original budget for this operation broken down at the objective level. Resource allocation at the objective level is subject to change during the course of the year as the operational situation evolves and priorities shift.

	Pillar 1 Refugee programme	Total
Favourable Protection Environment		
Legal remedies and legal assistance	1,669,651	1,669,651
Access to territory	208,775	208,775
Public attitudes towards persons of concern	195,747	195,747
Subtotal	2,074,174	2,074,174
Fair Protection Processes and Documentation		
Reception conditions	585,747	585,747
Registration and profiling	1,740,954	1,740,954
Status determination	75,887	75,887
Individual documentation	1,821,817	1,821,817
Civil status documentation	1,690,273	1,690,273
Family re-unification	185,747	185,747
Subtotal	6,100,426	6,100,426
Security from Violence and Exploitation		
SGBV prevention and response	4,847,996	4,847,996
Child protection	3,949,920	3,949,920
Subtotal	8,797,916	8,797,916
Basic Needs and Essential Services		
Health	8,369,221	8,369,221
Reproductive health and HIV/ Aids response	4,144,475	4,144,475
Nutrition	1,323,269	1,323,269
Water	3,908,968	3,908,968
Sanitation and hygiene	5,249,156	5,249,156
Shelter and infrastructure	8,784,902	8,784,902
Energy	3,773,268	3,773,268
Basic and domestic and hygiene Items	6,399,882	6,399,882
Services for persons with specific needs	2,076,701	2,076,701
Education	13,028,798	13,028,798
Subtotal	57,058,641	57,058,641
Community Empowerment and Self Reliance		

	Pillar 1 Refugee programme	Total
Community mobilization	2,114,433	2,114,433
Natural resources and shared environment	2,203,269	2,203,269
Self-reliance and livelihoods	4,762,947	4,762,947
Subtotal	9,080,648	9,080,648
Durable Solutions		
Integration	230,682	230,682
Resettlement	1,497,551	1,497,551
Subtotal	1,728,233	1,728,233
Leadership, Coordination and Partnerships		
Coordination and partnerships	351,774	351,774
Camp management and coordination	301,634	301,634
Donor relations	361,634	361,634
Subtotal	1,015,043	1,015,043
Logistics and Operations Support		
Supply chain and logistics	3,659,016	3,659,016
Operations management, coordination and support	5,961,634	5,961,634
Subtotal	9,620,650	9,620,650
2018 Original Budget	95,475,730	95,475,730