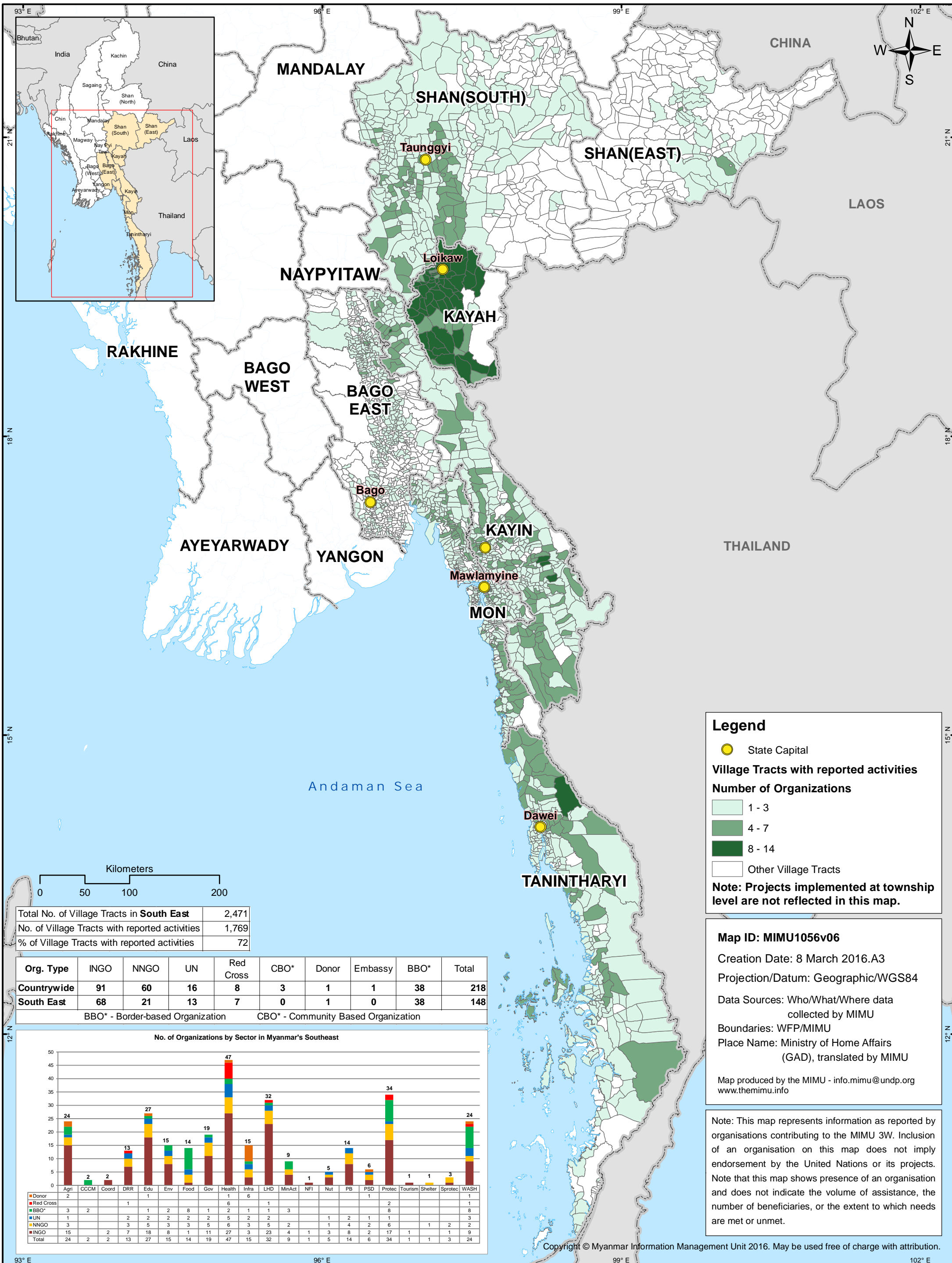




SOUTH EAST of Myanmar

All Projects Under Implementation (Village Tract Level)

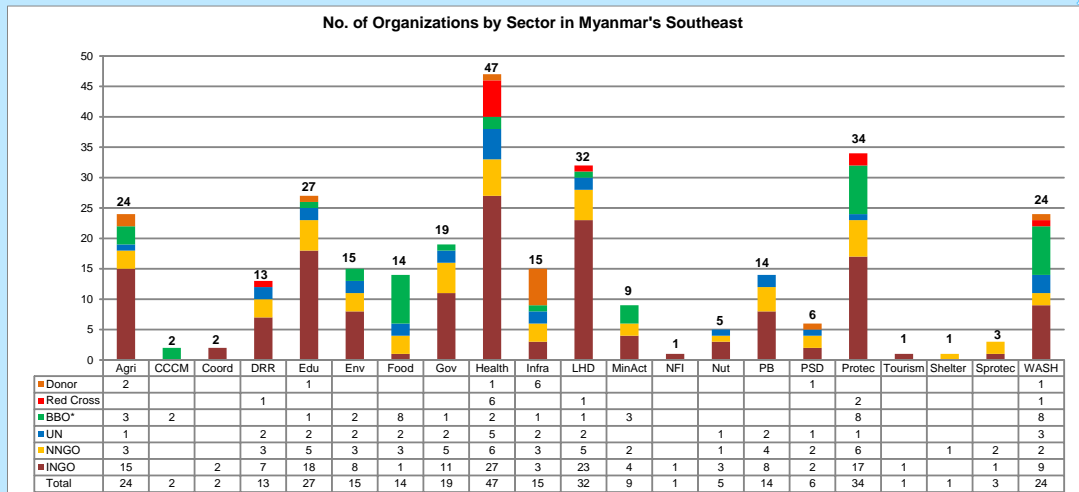
February 18, 2016



Total No. of Village Tracts in South East	2,471
No. of Village Tracts with reported activities	1,769
% of Village Tracts with reported activities	72

Org. Type	INGO	NNGO	UN	Red Cross	CBO*	Donor	Embassy	BBO*	Total
Countrywide	91	60	16	8	3	1	1	38	218
South East	68	21	13	7	0	1	0	38	148

BBO* - Border-based Organization CBO* - Community Based Organization



Legend

- State Capital

Village Tracts with reported activities

Number of Organizations

- 1 - 3
- 4 - 7
- 8 - 14
- Other Village Tracts

Note: Projects implemented at township level are not reflected in this map.

Map ID: MIMU1056v06

Creation Date: 8 March 2016.A3

Projection/Datum: Geographic/WGS84

Data Sources: Who/What/Where data collected by MIMU

Boundaries: WFP/MIMU

Place Name: Ministry of Home Affairs (GAD), translated by MIMU

Map produced by the MIMU - info.mimu@undp.org
www.themimu.info

Note: This map represents information as reported by organisations contributing to the MIMU 3W. Inclusion of an organisation on this map does not imply endorsement by the United Nations or its projects. Note that this map shows presence of an organisation and does not indicate the volume of assistance, the number of beneficiaries, or the extent to which needs are met or unmet.

**South-East - Organizations' Presence at Township Level by Sector
Projects Under Implementation as of February 18, 2016**

State/Region	Township	TS Pcode	Agriculture	CCCM	Coordination	Disaster Risk Reduction	Education	Environment	Food	Governance	Health	Infrastructure	Livelihoods	Logistics	Mine Action	Non Food Items	Nutrition	Peace Building / Conflict Prevention	Private Sector Development	Protection	Responsible Tourism	Shelter	Social Protection	WASH	Count of Orgs
Bago (East)	Bago	MMR007001	IDE/Proximity				GH, KBC (Kayin), KDN, UNICEF		GH, WFP	NPA, UNDP	GH, MSH, MSI, PSI, UNFPA, UNICEF, WHO		BRAC, KBC (Kayin)		DCA-CM (CIDKP), DCA-CM (KTWG)		GH, UNICEF			GH, KMSS, MRCS, SCI, Tdh-L, UNICEF		GH	GH		22
Bago (East)	Daik-U	MMR007007	IDE/Proximity				KBC (Kayin)				ICRC, PSI, WHO		BRAC, KBC (Kayin), PACT							MRCS, Tdh-L					9
Bago (East)	Htantabin	MMR013006	IDE/Proximity			CACH, KMSS	KBC (Kayin)				ICRC, PSI, WHO		KBC (Kayin)		DCA-CM (CIDKP)			KDN							9
Bago (East)	Kawa	MMR007003	IDE/Proximity				KBC (Kayin), RMO, UNICEF			NAG	PSI, WHO									MRCS, Tdh-L			HELVEATS		10
Bago (East)	Kyaukyi	MMR007011	CDN, IDE/Proximity				KBC (Kayin), UNICEF		TBC (BPHWT), TBC (CIDKP), TBC (KORD)		ICRC, PSI, TBC (KWO), UNICEF, WHO		CA, KBC (Kayin)		DCA-CM (KTWG), KDN, MAG			AYO, KDN, NPA		MRCS, TBC (CSSDD)				TBC (BPHWT), TBC (CSSDD)	19
Bago (East)	Kyauktaga	MMR007006	CRS, Diakonia, IDE/Proximity				KBC (Kayin), UNICEF				BIMM, ICRC, PSI, UNICEF, WHO		BRAC, DCA, Diakonia, KBC (Kayin)							MRCS, Tdh-L					13
Bago (East)	Nyaunglebin	MMR007005	IDE/Proximity				KBC (Kayin), RMO, UNICEF		TBC (KDHV)		BIMM, ICRC, PSI, WHO		BRAC, CA								Tdh-L				12
Bago (East)	Oktwin	MMR007013	IDE/Proximity				KBC (Kayin), UNICEF				ICRC, PSI, SCI, UNICEF, WHO		BRAC, DCA, KBC (Kayin), NYWCA								TLMM				11
Bago (East)	Phyu	MMR007012	IDE/Proximity				KBC (Kayin), UNICEF		WFP		ICRC, PSI, WHO		BRAC, DCA, KBC (Kayin)								KMSS, MRCS, Tdh-L				12
Bago (East)	Shwegyin	MMR007008	CRS, IDE/Proximity				KBC (Kayin), UNICEF		TBC (BPHWT), TBC (KORD)		BIMM, ICRC, PSI, TBC (KWO), WHO		DCA, KBC (Kayin), RMO		DCA-CM (CIDKP), DCA-CM (KTWG), WEI						Tdh-L				17
Bago (East)	Taungoo	MMR007009	IDE/Proximity		UN- Habitat		KBC (Kayin), KDN, UNICEF		WFP	DCA, NYWCA	ICRC, PSI, UNICEF, WHO		BRAC, CA, DCA, KBC (Kayin), NYWCA		DCA-CM (CIDKP), DCA-CM (KTWG)					KMSS, MRCS, Tdh-L, TLMM					20
Bago (East)	Thanatpin	MMR007002	IDE/Proximity				UNICEF			NAG	PSI, WHO		BRAC, DCA												7
Bago (East)	Waw	MMR007004	IDE/Proximity				UNICEF		WFP		ICRC, PSI, WHO		BRAC								Tdh-L				8
Bago (East)	Yedashe	MMR007010	IDE/Proximity				KBC (Kayin), UNICEF				ICRC, PSI, WHO		BRAC								Tdh-L				8
Bago (East)	Not Specified		USAID							COM, NPA	MRCS		ICCO								COM				5
Kayah	Bawlake	MMR002005	PACT	TBC (MSDA)			KBC (Kayin), UNICEF			COM, MC, PACT	CPI, ICRC, IOM, IRC, PACT, PSI, SCI, WHO		MC		DCA-CM (KnSWDC)		PACT	ICCO, MC	ICCO, MC	NRC			PACT		17
Kayah	Demoso	MMR002002	DRC, Metta				CARE, Diakonia, DRC, KBC (Kayin), PCF, UNICEF, WV	TBC (KnE)		AAM, COM, MC, NPA	AAM, BIMM, CPI, ICRC, IFRC, IOM, IRC, KBC (Kayin), MAM, PSI, SCI, WHO, WV	DRC	DRC, FRC - SPA, MC		CRS, DCA-CM (KnSWDC), MAG	DRC		AVSI, ICCO, MC, UNDP	COM	AAM, DRC, NRC, TBC (KLHRC), TBC (KNGY), TBC (MZM), WV		CARE			35
Kayah	Hpasawng	MMR002006	Diakonia, PACT	TBC (KnSWDC)			KBC (Kayin), UNICEF	TBC (KnE)	TBC (KnSWDC)	MC, PACT	CPI, ICRC, IOM, IRC, MAM, PACT, PSI, WHO	TBC (KnSWDC)	MC		DCA-CM (KnSWDC)		PACT	ICCO, MC	ICCO, MC	NRC, TBC (KLHRC)			PACT		19
Kayah	Hpruso	MMR002003	DRC, MC	TBC (KnSWDC)			CFM, DRC, KBC (Kayin), PCF, UNICEF	TBC (KnE)		AAM, COM, MC	AAM, BIMM, CPI, ICRC, IOM, IRC, KBC (Kayin), MAM, PSI, UNICEF, WHO	DRC, TBC (KnSWDC)	DRC, MC		CRS, DCA-CM (KnSWDC), MAG	DRC		AVSI, ICCO, MC, UNDP	AVSI, ICCO, MC, UNDP	AAM, DRC, NRC, TBC (KLHRC)		CARE			28

**South-East - Organizations' Presence at Township Level by Sector
Projects Under Implementation as of February 18, 2016**

State/Region	Township	TS Pcode	Agriculture	CCCM	Coordination	Disaster Risk Reduction	Education	Environment	Food	Governance	Health	Infrastructure	Livelihoods	Logistics	Mine Action	Non Food Items	Nutrition	Peace Building / Conflict Prevention	Private Sector Development	Protection	Responsible Tourism	Shelter	Social Protection	WASH	Count of Orgs	
Kayah	Loikaw	MMR002001	Diakonia				AVSI, KBC (Kayin), UNICEF, WEI, WV	AVSI, KBC (Kayin), UNICEF, WEI, WV, TBC (KnE)	TBC (KnSWDC), WFP	COM, GDI, MC, NPA, UNDP	CPI, ICRC, IFRC, IOM, IRC, KBC (Kayin), MRCS, PSI, PU-AMI, SCI, UNICEF, WHO, WV	CPI, ICRC, IFRC, IOM, IRC, KBC (Kayin), MRCS, PSI, PU-AMI, SCI, UNICEF, WHO, WV			ACTED, FRC - SPA, MC, WV			UNICEF	AVSI, ICCO, MC, UNDP	AVSI, ICCO, MC, UNDP			CARE, GDI		41	
Kayah	Mese	MMR002007		TBC (KnSWDC)			KBC (Kayin), UNICEF			MC	ICRC, IOM, IRC, PACT, PSI, SCI, WHO	TBC (KnSWDC)	MC					PACT	ICCO, MC	ICCO, MC				PACT	16	
Kayah	Shadaw	MMR002004	DRC, TBC (KRSDO)				KBC (Kayin), UNICEF	TBC (KnE)	TBC (KnSWDC)	COM, MC	CPI, ICRC, IOM, IRC, KBC (Kayin), SCI, WHO				FRC - SPA				ICCO, MC	ICCO, MC					20	
Kayah	Not Specified									CA, COM, NPA, OXFAM									NPA	ITC	COM				6	
Kayin	Hlaingbwe	MMR003002	IDE/Proximity, LWF, TBC (KORD)		LWF	LWF	ADRA, KBC (Kayin), LWF, Malteser, Swisscontact, UNICEF, WV	MC	WFP	AAM	AAM, ADRA, CPI, ICRC, IRC, LWF, Malteser, PSI, SCI, TBC (KWO), UNICEF, WHO, WV	DM, LWF	IOM, LWF, UNDP, WV					UNICEF	UNDP				GDI	Malteser, PWJ, TBC (WON)	29	
Kayin	Hpa-An	MMR003001	HAI, IDE/Proximity, WV			AAM, CA, HAI, UN-Habitat, UNDP	KBC (Kayin), KDN, Malteser, NRC, SCI, Swisscontact, UNICEF, WV	MC	TBC (BPHWT), TBC (KDHW), WFP	AAM, COM, MIID, NPA, UNDP, WV	AAM, BIMM, HAI, ICRC, IRC, Malteser, MPG, MRCS, PSI, PU-AMI, SCI, TBC (KWO), UNAIDS, UNICEF, WHO, WV	UNHCR	ADRA, BAJ, CA, DCA, HAI, IOM, UNDP					UNICEF	AFXB, UNDP				GDI	Malteser, MIID, TBC (BPHWT), UNHCR	45	
Kayin	Hpapun	MMR003003	HAI, IDE/Proximity, LWF, TBC (KORD)		LWF	CA, HAI, LWF	HAI, KBC (Kayin), LWF, UNICEF		TBC (BPHWT), TBC (CIDKP), TBC (KDHW), TBC (KORD)	AAM	BIMM, CPI, HAI, ICRC, LWF, TBC (KWO), WHO	LWF	CA, IOM, KBC (Kayin), LWF					UNICEF	UNICEF					HAI, NRC	HAI, TBC (BPHWT), TBC (CSSDD)	22
Kayin	Kawkareik	MMR003006	HAI			CA, HAI	HAI, KBC (Kayin), NPA, NRC, SDC, UNICEF	MC	TBC (CIDKP), WFP	AAM	CA, CPI, HAI, ICRC, KBC (Kayin), MAM, PSI, PU-AMI, SCI, TBC (KWO), UNAIDS, UNICEF, WHO	KDN, UNHCR	DCA, IOM, KBC (Kayin), UNDP					UNICEF	CA, KDN					HAI, NRC, UNHCR, UNICEF	27	
Kayin	Kyainseikgyi	MMR003007	LWF		LWF	LWF	KBC (Kayin), LWF, NPA, NRC, SDC, UNICEF	MC	TBC (BPHWT), TBC (KDHW)	AAM, TBC (HURFOM)	CPI, ICRC, LWF, MAM, PSI, TBC (KWO), UNICEF, WHO	KDN, LWF	CA, DCA, IOM, KBC (Kayin), LWF, TBC (MRDC), UNDP					UNICEF	KDN, UNDP					NRC, TBC (KhuPoKaPaw)	CWS, NRC, PWJ, SVS, TBC (BPHWT), TBC (CIDKP), TBC (HPKP), UNHCR, UNICEF	32

**South-East - Organizations' Presence at Township Level by Sector
Projects Under Implementation as of February 18, 2016**

State/Region	Township	TS Pcode	Agriculture	CCCM	Coordination	Disaster Risk Reduction	Education	Environment	Food	Governance	Health	Infrastructure	Livelihoods	Logistics	Mine Action	Non Food Items	Nutrition	Peace Building / Conflict Prevention	Private Sector Development	Protection	Responsible Tourism	Shelter	Social Protection	WASH	Count of Orgs		
Kayin	Myawaddy	MMR003005					KBC (Kayin), SIS, Swisscontact, UNICEF		TBC (CIDKP), WFP	AAM	CPI, ICRC, IOM, MAM, PSI, SCI, TBC (KWO), UNAIDS, WHO		IOM, KBC (Kayin)		DCA-CM (CIDKP), DCA-CM (KTWG)		UNICEF								TBC (CIDKP)	20	
Kayin	Thandaunggyi	MMR003004	DM, HAI, IDE/Proximity			HAI	HAI, KBC (Kayin), KDN, Swisscontact, UNICEF		TBC (KORD), WFP	AAM, COM, DCA, NPA	BIMM, CPI, HAI, ICRC, MAM, PSI, TBC (KWO), UNICEF, WHO	KDN	CDN, DCA, HAI, IOM, KBC (Kayin)		CRS, DCA-CM (CIDKP)		UNICEF	CA, GDI, KDN, PN		HAI, NRC, TBC (HMH), UNICEF			GDI	HAI, TBC (CSSDD), TBC (HMH), TBC (KORD), UNHCR	31		
Kayin	Not Specified									CA, COM, NPA, OXFAM, UNDP		ADB, Japan	UNDP											COM, TBC (BWU)	8		
Mon	Bilin	MMR011010	IDE/Proximity, TBC (KORD), WC		WC	WC	KBC (Kayin), RMO, SDC, Swisscontact, UNICEF		WFP	NAG, UNDP	ICRC, IOM, MSI, PSI, SDC, TBC (KWO), WC, WHO	KDN	IOM											TBC (BPHWT), UNHCR	21		
Mon	Chaungzon	MMR011003				Lanthit	KBC (Kayin), RMO, UNICEF	MC	WFP	NPA, SCI	ICRC, PSI, WHO		IOM, Metta, UNDP					UNDP						Lanthit, TLMM	16		
Mon	Kyaikmaraw	MMR011002	CARE			CARE	KBC (Kayin), NPA, RMO, UNICEF		WFP		AFB, ICRC, IOM, MAM, PSI, TBC (KWO), WHO		IOM, SCI		DCA-CM (KTWG)									Tdh-L	17		
Mon	Kyaikto	MMR011009	IDE/Proximity, WC		WC	WC	KBC (Kayin), UNICEF		WFP	NAG, UNDP	ICRC, IOM, PSI, UNICEF, WC, WHO		IOM											NRC, Tdh-L	13		
Mon	Mawlamyine	MMR011001	HAI, IDE/Proximity, WV			HAI, UN-Habitat, WV	KBC (Kayin), KDN, NPA, Swisscontact, UNICEF, WV		WFP	COM, MIID, UNDP	AFB, CARE, HAI, ICRC, IOM, MPG, MSI, PSI, PU-AMI, UNAIDS, UNICEF, WHO, WV		HAI, IOM, SCI, Trocaire				UNICEF	AFB, AYO, UNDP		KMSS, NP, SCI, Tdh-L, Trocaire, UNICEF, WV			GDI	MIID	32		
Mon	Mudon	MMR011005	CARE				NPA, RMO, UNICEF		TBC (BPHWT), WFP		AFB, ICRC, IOM, MAM, PSI, WHO	KDN	IOM, Metta, SCI, Trocaire											NCA, Trocaire	SDC, TBC (BPHWT)	18	
Mon	Paung	MMR011008	IDE/Proximity				RMO, UNICEF	MC, MERN	WFP		AFB, ICRC, MAM, PSI, UNICEF, WHO		IOM, Metta, UNDP					AFB, UNDP								14	
Mon	Thanbyuzayat	MMR011004	CARE, IDE/Proximity, WV				KBC (Kayin), NPA, RMO, SDC, Swisscontact, UNICEF, WV	MC	WFP	TBC (HURFOM)	ICRC, IOM, MalariaCons, PSI, WHO, WV	KDN	Diakonia, IOM, Metta, Trocaire, UNDP, WV				WV							NCA, Tdh-L, Trocaire, WV	WV	24	
Mon	Thaton	MMR011007	IDE/Proximity, WC		WC	WC	KBC (Kayin), Swisscontact, UNICEF		WFP	NAG	ICRC, IOM, MPG, MSI, PSI, TBC (KWO), UNICEF, WC, WHO		IOM		DCA-CM (KTWG)										CanRC, CFM, NRC, TLMM	UNHCR	21
Mon	Ye	MMR011006	CARE, TBC (KORD)				KBC (Kayin), NPA, SDC, Swisscontact, UNICEF		TBC (MRDC), WFP	COM, NPA, TBC (HURFOM)	CPI, ICRC, IOM, MAM, MSI, PSI, WHO	SDC	IOM											NRC, Tdh-L	SDC, UNHCR	21	
Mon	Not Specified									CA, COM, NPA, UNDP, UNICEF		WB	ICCO, Metta, UNDP												COM, TBC (BWU)	9	
Shan (East)	Ho Tawng (Ho Tao)	MMR016320					UNICEF, WFP				HPA, Malteser															4	

**South-East - Organizations' Presence at Township Level by Sector
Projects Under Implementation as of February 18, 2016**

State/Region	Township	TS Pcode	Agriculture	CCCM	Coordination	Disaster Risk Reduction	Education	Environment	Food	Governance	Health	Infrastructure	Livelihoods	Logistics	Mine Action	Non Food Items	Nutrition	Peace Building / Conflict Prevention	Private Sector Development	Protection	Responsible Tourism	Shelter	Social Protection	WASH	Count of Orgs
Shan (South)	Monghsu	MMR014017					UNICEF		TBC (SSDF)		MSF-H, PSI, UNICEF, WHO									Tdh-L					6
Shan (South)	Mongkaing	MMR014016					UNICEF				UNICEF, PSI, UNICEF, WHO														4
Shan (South)	Mongnai	MMR014019					AVSI, UNICEF				PSI, WHO														4
Shan (South)	Mongpan	MMR014021					UNICEF				PSI, WHO		UNDP											TBC (SSDF)	5
Shan (South)	Nansang	MMR014013					UNICEF		TBC (SSDF)		TBC (SSDF), PSI, WHO		Metta						COM	KMSS, Tdh-L					9
Shan (South)	Nyaungshwe	MMR014002	IDE/Proximity, MIID				KBC (Kayin), PFC, SIS, UNICEF	IUCN, MERN, MIID, PFC, UNDP, UNESCO		COM, DCA, MIID, SCI, UNDP	PSI, WHO		DCA, MC, PFC, PGMF, Swisscontact					GDI	COM, PFC, Swisscontact	KMSS	PfC			MIID	20
Shan (South)	Pekon	MMR014010	DM			CA, DM	AVSI, KBC (Kayin), SIS, UNICEF, WFP		WFP	GDI, SCI	JSI, PSI, UNFPA, WHO	DM, UN-Habitat						GDI		TBC (KNGY), UNICEF				UN- Habitat	16
Shan (South)	Pindaya	MMR014006	SWISSAID				UNICEF	UNDP			PSI, WHO		MC, PGMF, SWISSAID, Swisscontact						Swisscontact	SWISSAID					8
Shan (South)	Pinlaung	MMR014009	IDE/Proximity, Metta				KBC (Kayin), UNICEF			DCA	PSI, WHO		MC, PGMF, Swisscontact						Swisscontact	NRC					11
Shan (South)	Taunggyi	MMR014001	GIZ, IDE/Proximity, Metta, SWISSAID				AVSI, KBC (Kayin), KDN, Metta, SIS, UNICEF	UNDP	WFP	COM, UNDP	JSI, MRCS, PGK, PSI, PU-AMI, UNFPA, UNICEF, UNION, WHO	KfW	MC, Metta, SWISSAID, Swisscontact				UNICEF	GDI, MC, UNDP	COM, GIZ, Swisscontact	KMSS, Metta, NP, NRC, SCI, SWISSAID, TDH NL, Tdh-L, Trocaire, UNICEF		GDI	Metta		35
Shan (South)	Ywangan	MMR014007	IDE/Proximity				UNICEF	MERN		COM	IFRC, PSI, WHO		PGMF, SWISSAID						COM						10
Shan (South)	Not Specified									CA, COM, OXFAM, UNDP	MRCS		UNDP							COM, Diakonia, TAF, TBC (BWU)				Metta	9
Tanintharyi	Bokpyin	MMR006010					KBC (Kayin), UNICEF	ALARM			ICRC, PSI, WHO		Trocaire								Trocaire				7
Tanintharyi	Dawei	MMR006001	TBC (TRIP NET)			WV	KBC (Kayin), KDN, NRC, UNICEF	TBC (TRIP NET), Trocaire, WCS, WWF	WFP	COM, NPA	CPI, ICRC, MPG, MSF-CH, MSI, PSI, SDC, UNICEF, WHO, WV	NRC, UNHCR	CA, Trocaire		DCA-CM (KTWG)		UNICEF	CA, KDN		CFM, NP, NRC, Trocaire, UNICEF, WV				NRC	27
Tanintharyi	Kawthoung	MMR006009					UNICEF, WV	Oikos	WFP		ICRC, PSI, UNICEF, WHO, WV										UNICEF, WV				7
Tanintharyi	Kyunsu	MMR006006					KBC (Kayin), UNICEF	ALARM		MC	ICRC, PSI, UNICEF, WHO										NRC				8
Tanintharyi	Launglon	MMR006002	WV			WV	UNICEF, WV	Trocaire		COM, NPA	ICRC, MSF-CH, PSI, UNICEF, WHO, WV		DCA, Trocaire								CFM, NRC, Trocaire, WV				12
Tanintharyi	Myeik	MMR006005					KBC (Kayin), UNICEF, WV		WFP		CPI, ICRC, MPG, PSI, WHO, WV		CA, KBC (Kayin), Trocaire, WV		DCA-CM (KTWG)		UNICEF, WV			NRC, Tdh-L, Trocaire, UNICEF, WV				WV	15
Tanintharyi	Palaw	MMR006007	WV				KBC (Kayin), KDN, UNICEF, WV				CPI, ICRC, PSI, WHO, WV		Trocaire, WV								NRC, Trocaire, WV			TBC (CIDKP)	12
Tanintharyi	Tanintharyi	MMR006008					KBC (Kayin), NRC, UNICEF	ALARM		UNDP	ICRC, PSI, TBC (KWO), UNICEF, WHO										NRC			TBC (CIDKP)	10
Tanintharyi	Thayetchaung	MMR006003					KBC (Kayin), KDN, NRC, UNICEF, WV	Trocaire			ICRC, MSF-CH, PSI, TBC (KWO), WHO, WV	NRC	KBC (Kayin), Trocaire, WV		DCA-CM (KTWG)			AFXB, KDN		NRC, Trocaire, WV				NRC	13

**South-East - Organizations' Presence at Township Level by Sector
Projects Under Implementation as of February 18, 2016**

State/Region	Township	TS Pcode	Agriculture	CCCM	Coordination	Disaster Risk Reduction	Education	Environment	Food	Governance	Health	Infrastructure	Livelihoods	Logistics	Mine Action	Non Food Items	Nutrition	Peace Building / Conflict Prevention	Private Sector Development	Protection	Responsible Tourism	Shelter	Social Protection	WASH	Count of Orgs
Shan (East)	Kengtung	MMR016001	SWISSAID, WV			UN- Habitat, WV	UNICEF, WV		WFP		Malteser, MRCS, PSI, UNICEF, WHO, WV	GIZ	SWISSAID				Malteser			SCI, SWISSAID, Tdh-L, UNICEF, WV					13
Shan (East)	Mong Hpen	MMR016319					UNICEF, WFP		WFP		HPA, Malteser														4
Shan (East)	Mong Kar	MMR016322					UNICEF, WFP		WFP		HPA, Malteser														4
Shan (East)	Mong Pawk	MMR016321					UNICEF, WFP				HPA, Malteser														4
Shan (East)	Monghpyak	MMR016010					UNICEF				IFRC, Malteser, PSI, WHO	GIZ													6
Shan (East)	Monghsat	MMR016006					UNICEF				Malteser, PSI, WHO														4
Shan (East)	Mongkhet	MMR016002					UNICEF				Malteser, PSI, WHO														4
Shan (East)	Mongla	MMR016005					UNICEF		WFP		HPA, Malteser, PSI						Malteser								5
Shan (East)	Mongping	MMR016007					UNICEF				Malteser, PSI, UNICEF, WHO														4
Shan (East)	Mongton	MMR016008					UNICEF				Malteser, PSI, WHO														4
Shan (East)	Mongyang	MMR016003					UNICEF				HPA, Malteser, PSI, WHO														5
Shan (East)	Mongyawng	MMR016011					UNICEF				HPA, Malteser, PSI, WHO	GIZ													6
Shan (East)	Nam Hpai	MMR016323					UNICEF, WFP				HPA														3
Shan (East)	Tachileik	MMR016009				CACH, KMSS	UNICEF, WV		WFP		Malteser, MANA, PSI, UNAIDS, UNICEF, WHO, WV						Malteser			UNICEF, WV					11
Shan (East)	Not Specified									CA, OXFAM	MRCS							ILO		COM, TAF, TBC (BWU)					7
Shan (South)	Hopong	MMR014003	IDE/Proximity, Metta, SWISSAID, UNODC				Metta, SIS, UNICEF	MC		NPA	NPA, PSI, WHO		Metta, SWISSAID, UNDP					UNDP		NRC, SWISSAID, Tdh-L			Metta		14
Shan (South)	Hsihseng	MMR014004	IDE/Proximity, Metta, SWISSAID				Metta, UNICEF, WFP				JSI, PSI, RI, WHO		Metta, SWISSAID							NRC, SWISSAID					11
Shan (South)	Kalaw	MMR014005	IDE/Proximity, MIID				AVSI, KBC (Kayin), SIS, UNICEF	MIID, UNDP	WFP	COM, NPA	PGK, PSI, UNION, WHO		MC, PGMF, Swisscontact					Swisscontact		KMSS, Tdh-L					19
Shan (South)	Kunhing	MMR014014									Malteser, PSI, UNICEF, WHO		Metta							Metta			Metta		6
Shan (South)	Kyethi	MMR014015	Metta						TBC (SSDF)		MSF-H, PSI, WHO														5
Shan (South)	Laihka	MMR014012					AVSI		TBC (SSDF)		JSI, PSI, RI, WHO									Tdh-L			TBC (SSDF)		8
Shan (South)	Langkho	MMR014018					UNICEF				PSI, WHO														3
Shan (South)	Lawksawk	MMR014008	IDE/Proximity, Metta				Metta, UNICEF				Metta, UNICEF, PSI, WHO														6
Shan (South)	Loilen	MMR014011					AVSI, UNICEF				JSI, PSI, UNFPA, WHO														7
Shan (South)	Mawksmai	MMR014020					UNICEF				JSI, PSI, RI, WHO													TBC (BPHWT)	7



**South-East - Organizations' Presence at Township Level by Sector
Projects Under Implementation as of February 18, 2016**



State/Region	Township	TS Pcode	Agriculture	CCCM	Coordination	Disaster Risk Reduction	Education	Environment	Food	Governance	Health	Infrastructure	Livelihoods	Logistics	Mine Action	Non Food Items	Nutrition	Peace Building / Conflict Prevention	Private Sector Development	Protection	Responsible Tourism	Shelter	Social Protection	WASH	Count of Orgs
Tanintharyi	Yebyu	MMR006004					KBC (Kayin), KDN, NPA, UNICEF	Trocaire	TBC (MRDC), WFP	NPA, TBC (HURFOM)	CPI, ICRC, MAM, MSF-CH, PSI, TBC (KWO), WHO		DCA, Diakonia, KBC (Kayin), Trocaire					KDN		CFM, NRC, Trocaire				UNICEF	19
Tanintharyi	Not Specified							MERN, WWF		CA, COM, DCA, NPA, UNICEF										COM					7