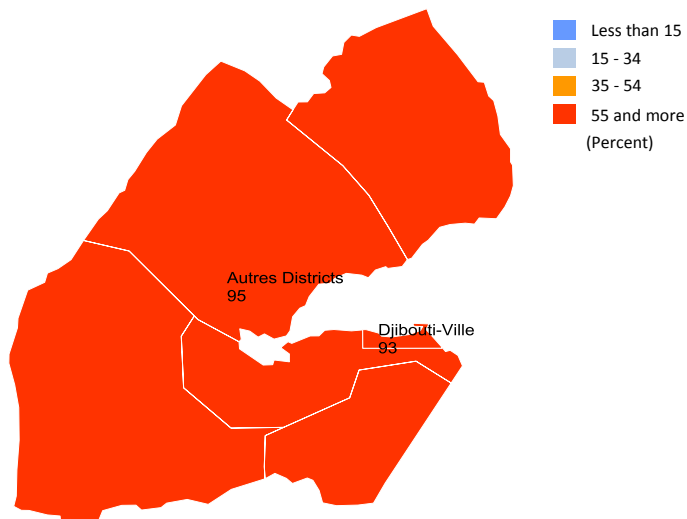
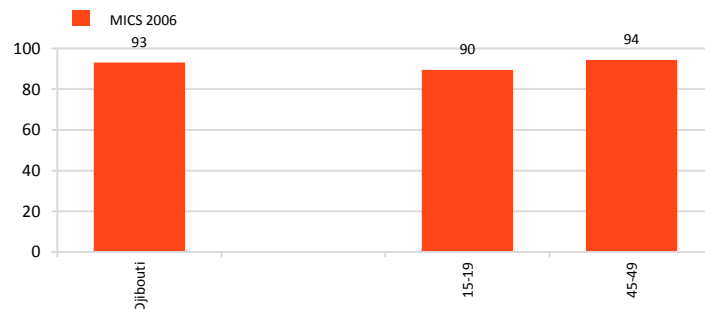


Prevalence of Female Genital Mutilation/Cutting (FGM/C) among Women Aged 15-49

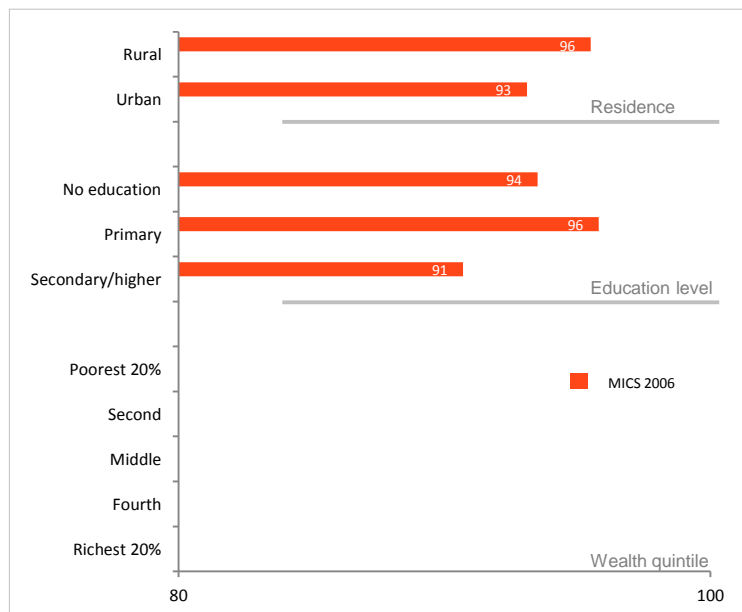


**Levels:** currently, **93%** of women aged 15-49 in Djibouti have undergone some form of FGM/C

**Trends:** FGM/C is less common among girls 15-19 than women 45-49

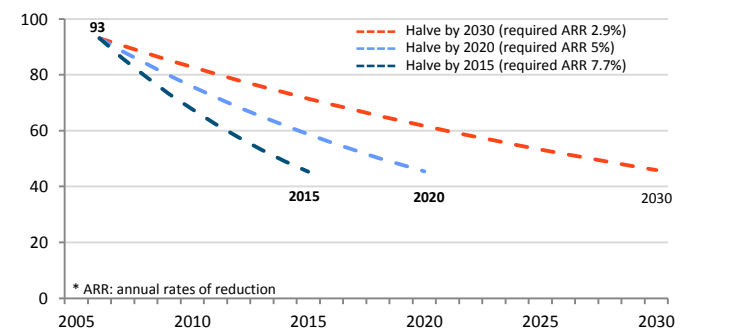


**Inequalities:** Human rights violations affect women and girls differently. Girls who are the least educated and living in rural areas are at the greatest risk of FGM/C.

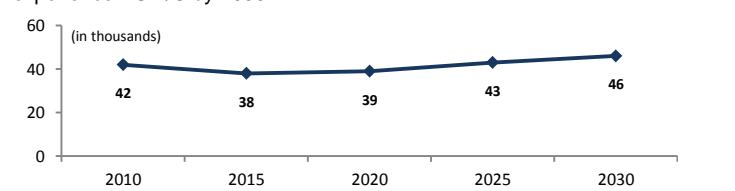


Projections

To meet the target of reducing the FGM/C rate by half, more intensive interventions and resources are needed

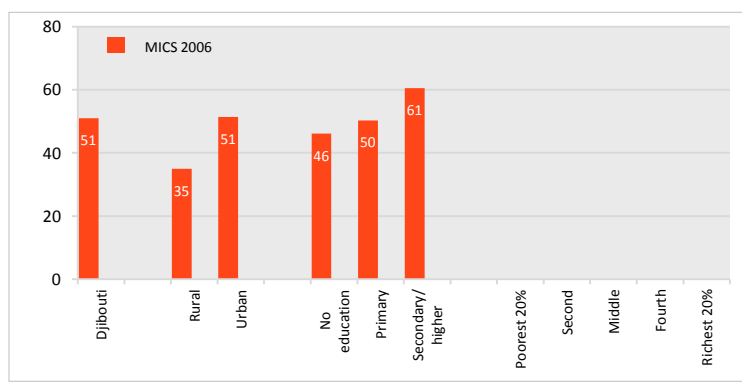


If present trends continue, 46,000 girls born between 2010-2015 will experience FGM/C by 2030



Opposition to FGM/C | Key Indicators

About 51 percent of women believe FGM/C should be discontinued



Population size, female age 15-49 (in thousands), 2010	224	World Population Prospects 2012
Prevalence of FGM/C among women 15-49 (%)	93	MICS 2006
Prevalence of FGM/C among girls 15-19 (%)	90	MICS 2006
Ethnic group with the highest prevalence in the country (%)	-	-
Existence of national policies and laws banning FGM/C; Year passed	1995, 2009*	FGM/C programme data

\*Later dates reflect amendments to the original law or new laws

FGM/C among Young Girls

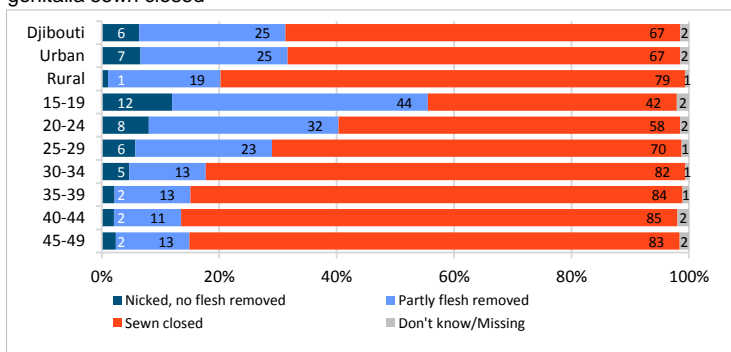
Data not available

Age at FGM/C

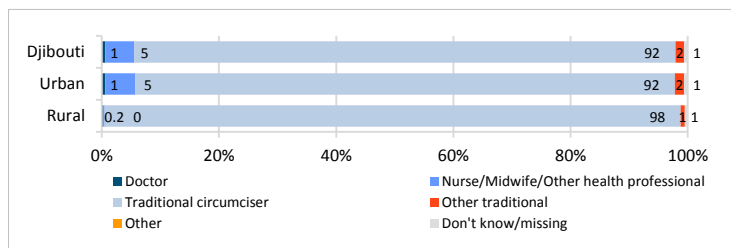
Data not available

Type of FGM/C and Performers of FGM/C

About 67% of girls and women who have undergone FGM/C have had their genitalia sewn closed



FGM/C is essentially performed by traditional circumcisers (more than 90%)



Monitoring the UNFPA-UNICEF Joint Programme on FGM/C

Community leaders and stakeholders committed to FGM/C abandonment

Religious leaders that make public declarations delinking FGM/C from religion

Cumulative number of villages declaring the abandonment of FGM/C

Health facilities integrating FGM/C prevention in their antenatal and postnatal care

Data not available

Data not available

Data not available

Data not available