

© UNHCR Syria / B. Diab

Syria. Renewed hope as sector partners scale up its response in Aleppo:

Two boys set some wood and clothes on fire to get some warmth as they wait for other family members to receive hot meals and bread provided by one of the communal kitchens in Masaken Hanano neighborhood of east Aleppo.

KEY POINTS

Aleppo City Emergency Support

- The sector partners continue to monitor the situation of people in need from east Aleppo to better plan its collective response. On 9 January, the sector's Coordination Team conducted a short mission in Aleppo City and visited Jibreen collective shelter which, as of 9 January, accommodated around 961 families (estimated 5,077 persons). While NFI provision is ongoing, unsystematic distribution and weak documentation of beneficiaries are among the major issues reported. Some IDPs complained on unfair NFI distribution and the provision of sub-standard items. Due to some unmet needs, few NFIs were not properly utilized according to its purpose. For instance, mattresses were being burned to provide warmth and other items were being sold to afford other basic needs. Also, some partners reported overlap of interventions due to lack of information on collective distribution plans. Moreover, there is no harmonized conduct of needs assessment which often times led to information fatigue among the population in need. Based on partners' rapid assessment, the displaced families are expected to remain at the collective shelter as only 9% are willing to return to their habitual residences and around 60% of the total displaced population has totally damaged or demolished dwellings in their places of origin.
- The sector partners also continue to distribute basic non-food items to the most vulnerable families. In January, IOM covered around 5,200 persons while UNHCR served around 103,000 persons with its core relief items. The sector partners also continue to provide winterization support. Local NGO, Ta'alouf, with UNICEF and UNHCR are regularly distributing heaters and firewood to the IDPs in Jibreen industrial halls.
- Funding through the Syrian Humanitarian Fund has been dedicated to Aleppo in January and partners were encouraged to submit project proposals.

Inter-Agency Convoy Support

- The sector participated in an inter-agency convoy on 7th of January in Madamiyet Elsham community in Rural Damascus governorate. Following the evacuation of fighters and their families to Idlib governorate in October 2016, the general access to the area has improved. This situation has also resulted in an improved supply of basic commercial goods in the market however, due to financial constraints residents cannot afford to buy these goods and so they continue to rely on humanitarian assistance. Influx of returnees has started to take place due to an improved access and partners reported that majority of the population needs winterization support. Collectively, the convoy served around 40,000 persons and UNHCR, specifically, provided 3,000 boxes of solar lanterns and 2,000 boxes of winter kits.

2017 Partner's Reporting Training

- The sector organized a one-day training with partners on 22nd of January to level-off collective understanding on sectorial reporting rationale and requirements. It also served as a venue to share reporting best practices and lessons learned that formed as basis to standardize sectorial reporting flows. A total of 36 participants representing 15 partner organizations attended the

KEY DIGITS

OVERALL



4.9M

5.3M

HRP TARGET

PEOPLE IN NEED

CORE NFI

HRP Objective: Targeted crisis-affected households have their core and essential non-food item needs met



31,665

4.9M

SERVED

HRP TARGET

HRP Indicator 1.1. No. of people whose needs in relation to core and essential NFIs are met

31,665 accounts for beneficiaries whose needs were adequately met for receiving more than 4 core NFI items (6% of the total target of 4.9 million people in need of NFI inside Syria).

SUPPLEMENTARY ITEM

HRP Objective: Targeted people are protected from seasonally harsh conditions



415,029

825,000

SERVED

HRP TARGET

HRP Indicator 1.2. No. of people whose needs are met for seasonal assistance

Estimate number of people who received more than 1 seasonal or supplementary item in January 2017 (50% of the total target of 825,000 people in 2017).

TOTAL NFI DISTRIBUTED



100,641

375,481

CORE NFI

SUPPLEMENTARY NFI



41

272

COVERED

TOTAL SUB-DISTRICTS

▶ Key Points cont...

training. At the end of the activity, they had been familiarized with the new reporting indicators, which are based on the 2017 Humanitarian Response Plan Results Framework. They also understood the inter-relatedness of the reporting system to the overall sector strategic objectives. Above all, they learned the use of the new 4W (Who-does-What-When-Where) template, which is the main reference tool for partners to report their operational presence. During the first half of 2016 the sector will see this training also rolled out at various field locations.

Beirut Coordination Workshop

- The Syria Hub Coordination Team participated in the Whole of Syria Shelter/NFI Coordination Workshop in Beirut, Lebanon from 25-26 January. The workshop served as a venue to share updates from various hubs and collectively develop a strategic plan for 2017.

▶ GAPS AND CHALLENGES

- Widespread insecurity, challenging physical access and rigorous bureaucratic procedures and approval limit provision of adequate and regular humanitarian assistance especially to those who live in besieged and hard-to-reach areas;
- Absence of age and gender disaggregated information of population in need unable the sector to accommodate and target specific needs;
- Logistical constraints especially during inter-agency convoy such as, road blockage, presence of checkpoints, and presence of threats continue to hamper rapid distribution;
- Lack of actual data on distribution recipients prevent the sector to better measure the actual reached and served beneficiaries;
- Limited and irregular monitoring of distribution due to insecurity and sensitivities compromise the ability of the sector to assess the impact of its assistance and better inform future planning;
- Absence of clear and effective feedback mechanism from population in need due to information gathering sensitivities unable the sector to better determine the efficacy of its effort;
- Lack of income generating activities to provide the necessary financial means continues to hamper access to basic household items among the most vulnerable population in need;
- Diminishing active participation among sector members affects coordination and the overall sectorial reach;
- Inexact coordination structure impacts the level of efficiency in coordinating sectorial response for interagency convoys.
- Lack of reliable consolidated information for interagency convoy reach affects the sector's ability to determine the extent and impact of its convoy contribution;
- Insufficient number of detailed and comprehensive assessment makes it difficult for the sector to shift its response priorities from distribution of basic essential NFI items to provision of supplementary items.

CRISIS BACKGROUND: *The civil unrest in Syria Arab Republic that started in March 2011 has transformed into a multi-sided armed conflict that displaced around 6.3 million people and forced around 4.8 million people out of the country to seek asylum. The 2017 Humanitarian Needs Overview reported that around 13.5 million people are in need of humanitarian assistance of which around 5.8 million people are desperate to receive essential household items and other multi-sectoral assistance as they continue to struggle in an unsafe and uncertain environment. The degree of resilience and positive coping mechanism of the affected population have reduced due to the protracted nature of the conflict. Purchasing power and the ability to provide for their basic household needs have decreased due to economic recession that left thousands of Syrian people unemployed and the prospect of accessing essential household items has also declined due to closure of essential service providers.*



PARTNER IN FOCUS



Established in 1951, IOM is the leading inter-governmental organization in the field of migration and works closely with governmental, intergovernmental and non-governmental partners. It is the global co-lead agency of the CCCM cluster for natural disasters. It became an official UN organization in September 2016.

With 166 member states, a further 8 states holding observer status and offices in over 100 countries, IOM is dedicated to promoting humane and orderly migration for the benefit of all. It does so by providing services and advice to governments and migrants. IOM also works to help ensure the orderly and humane management of migration, to promote international cooperation on migration issues, to assist in the search for practical solutions to migration problems and to provide humanitarian assistance to migrants in need, including refugees and internally displaced people.

In Syria, IOM started its operation in 2012 by providing shelter rehabilitation support in Rural Damascus. As the need for humanitarian assistance among the conflict-affected population increases, IOM has expanded its operational presence to other governorates with focus on additional shelter projects such as, shelter upgrade, transitional shelter support, owner-oriented shelter aid, shelter rehabilitation and distribution of shelter sealing off kits. IOM has also been providing emergency support through NFI distribution on regular basis. As of 2016, they distributed 182,218 NFI items serving around 125,300 people in 27 sub-districts.

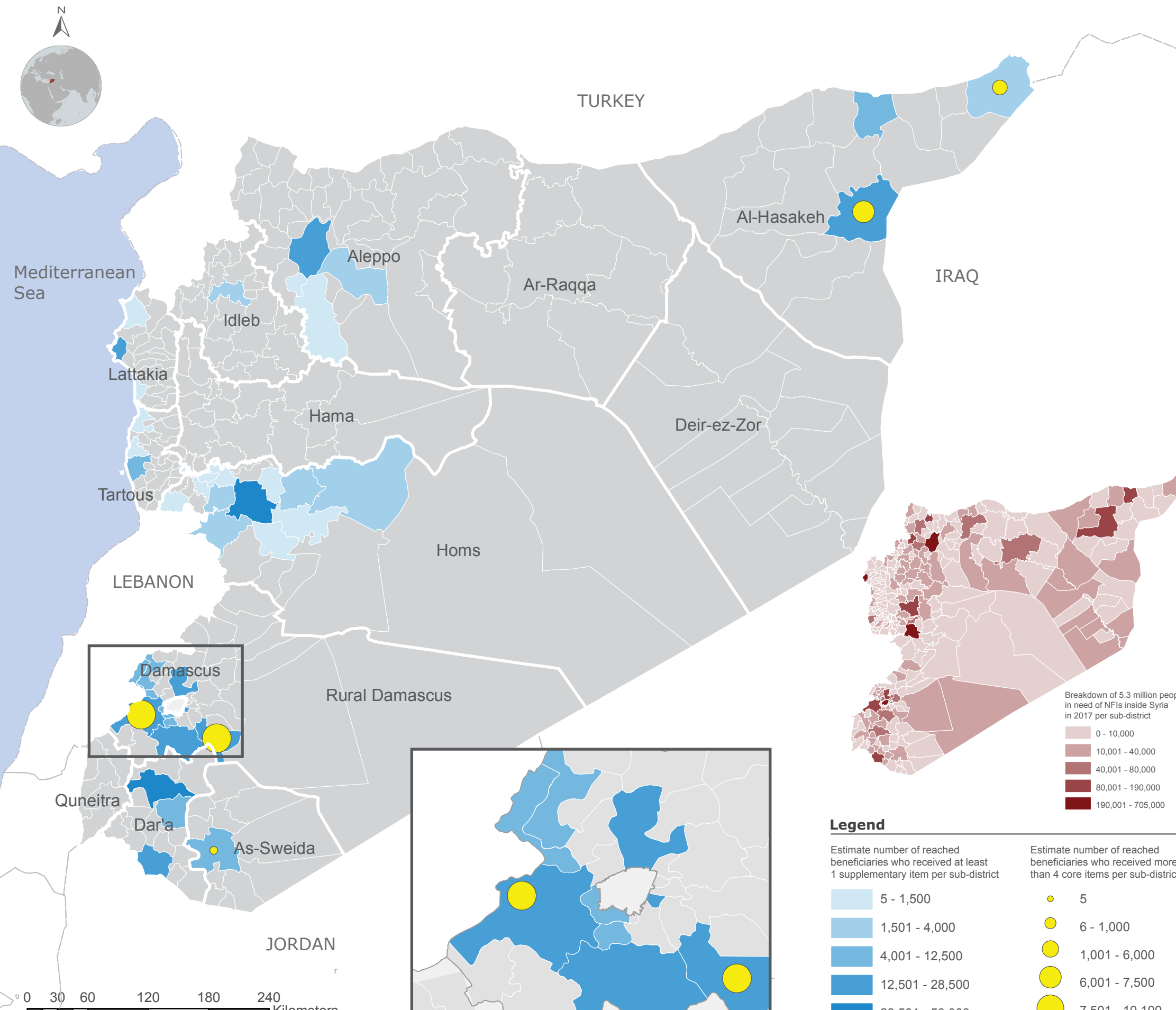
NFI Sector Coordination Team

Joel Andersson, Senior NFI Sector Coordinator (anderssj@unhcr.org)
 Zina Alkhami, NFI Sector Field Associate (alkhami@unhcr.org)
 Muhammad Shahzad, IM Officer (shahzadm@unhcr.org)
 Corazon C. Lagamayo, IM Officer (lagamayo@unhcr.org)
 Maha Shaban, IM Associate (shabanm@unhcr.org)

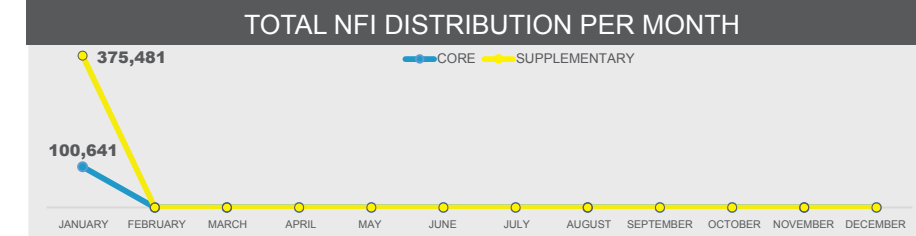
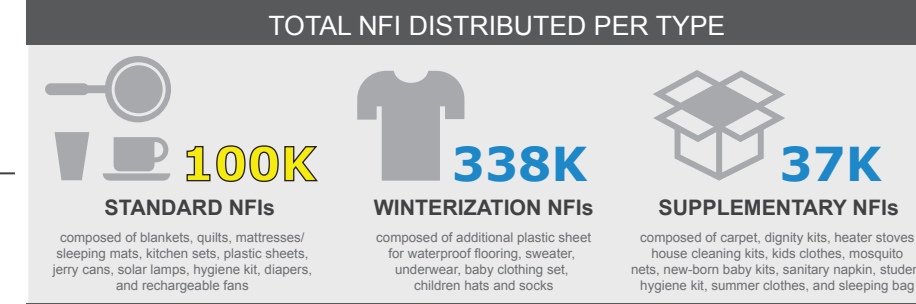
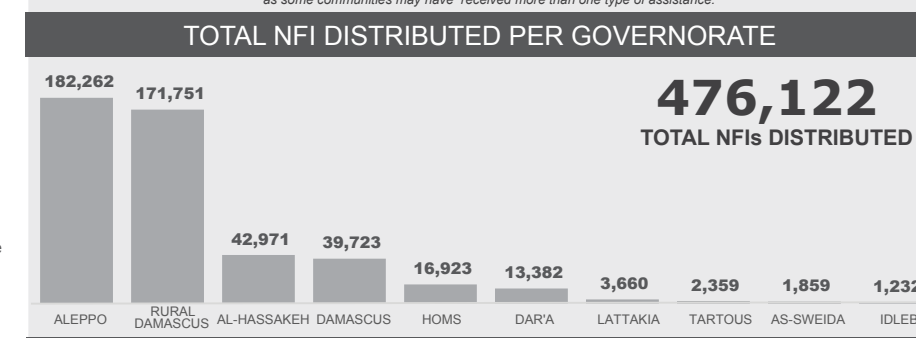
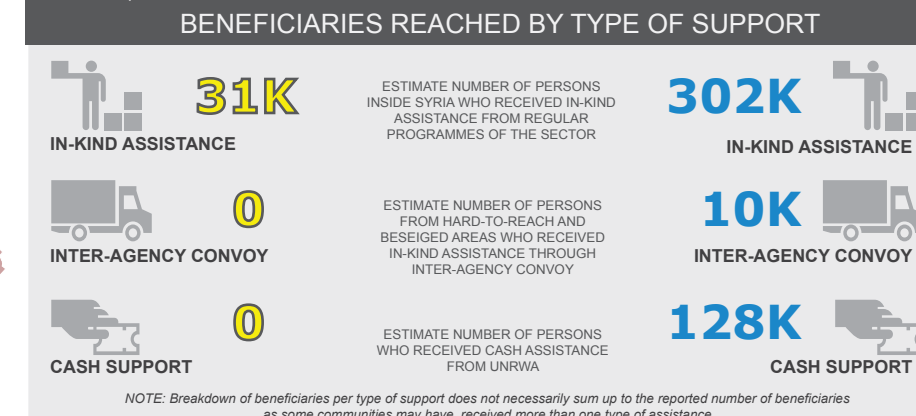
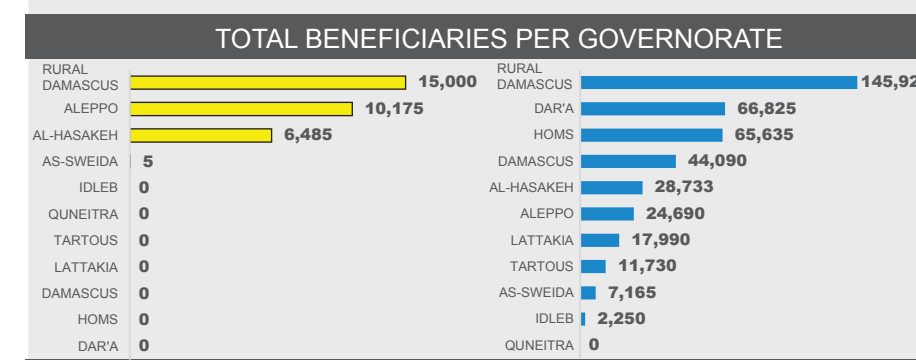
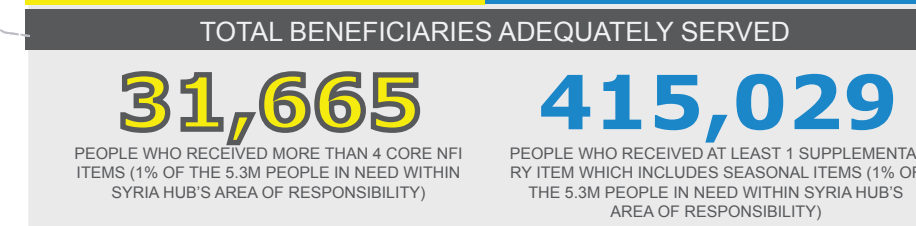


SYRIA: NFI RESPONSE

Reporting Period: January 2017



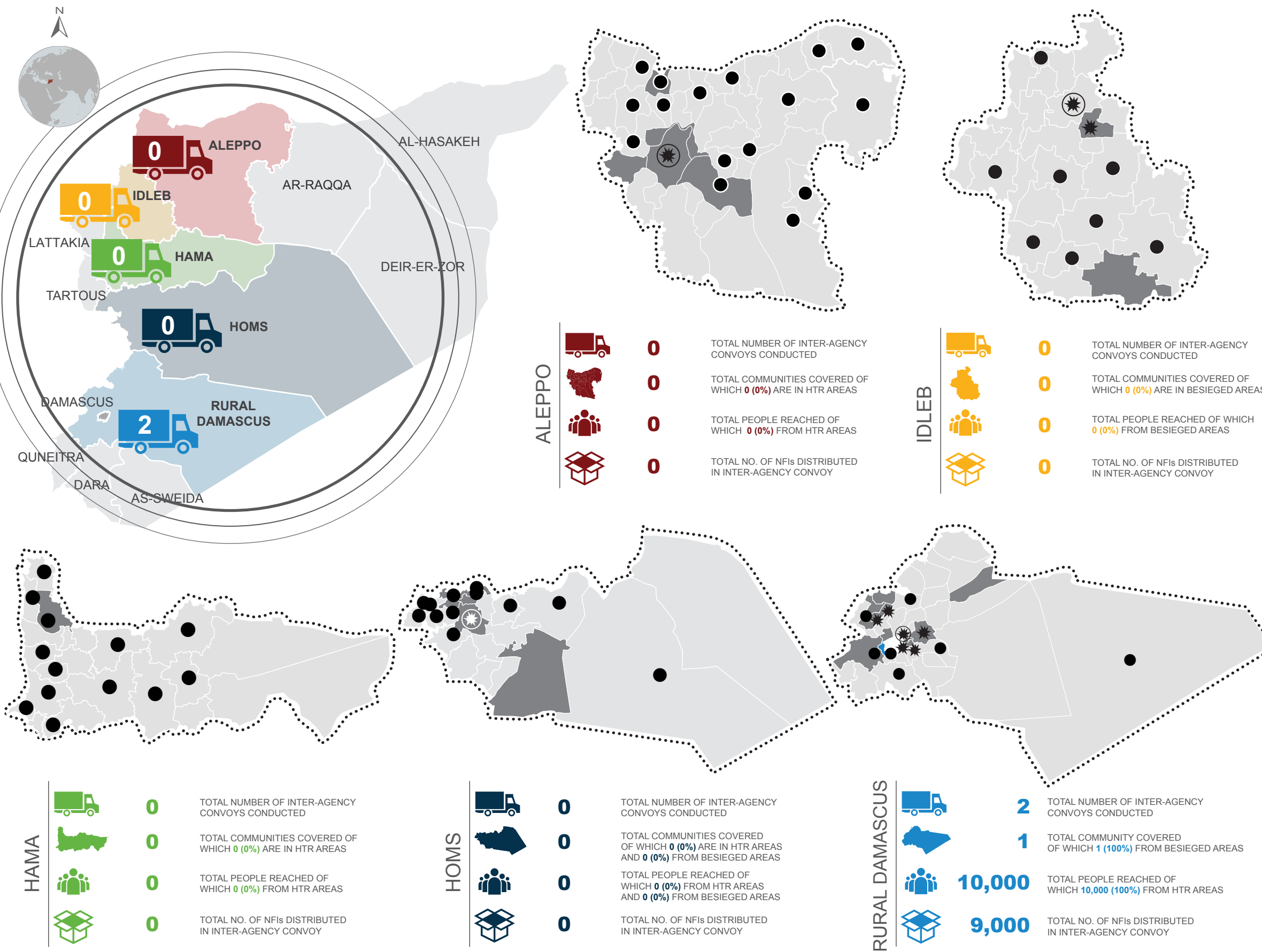
CORE ITEMS	SUPPLEMENTARY ITEMS
------------	---------------------



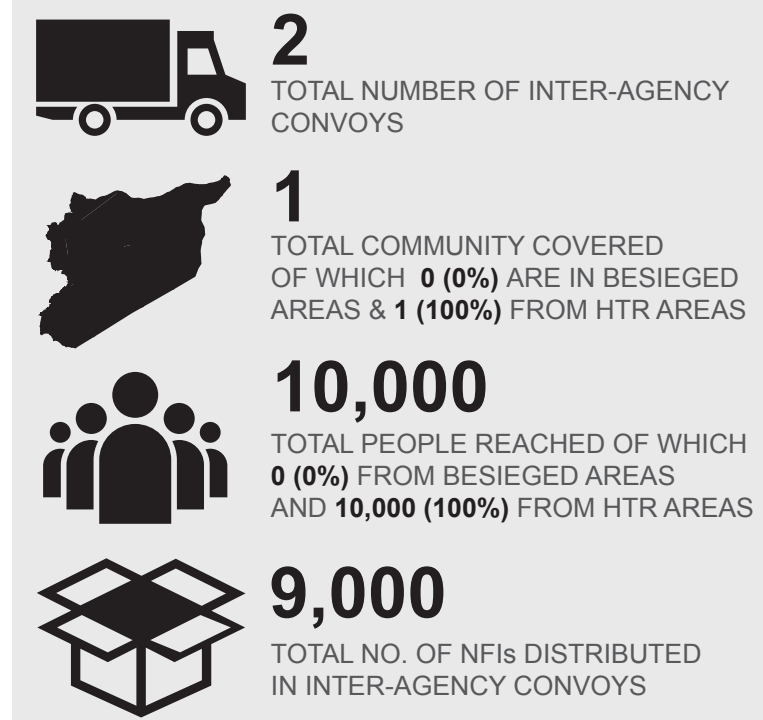


SYRIA: INTER-AGENCY CONVOY

Reporting Period: January 2017



SUMMARY



NAME OF BESIEGED AND HTR COMMUNITIES COVERED BY INTER-AGENCY CONVOY (2016-2017)

GOVERNORATE	HARD-TO-REACH COMMUNITIES	BESIEGED COMMUNITIES
ALEPPO	● AFRIN ● ALEPPO CITY ● HAJEB ● NABUL ● TALL REFAAT	
IDLEB		* FOAH
HAMA	● MADIQ CASTLE	
HOMS	● AR-RASTAN ● DAR KABIRA ● HOMS CITY ● KAFR LAHA ● TALBISEH ● TALDU ● TIR MAALAH	
RURAL DAMASCUS	● BLUDAN ● JURUD ● MADAMIYET ELSHAM ● QUDSIYA ● SARGHAYA	* ARBIN * AZ-ZABDANI * BEIT SAWA * DARRAYA * DUMA * EIN TERMA * HAMMURA * HARASTA * HEZZEH * JISREIN * KAFR BATNA * KHAN ELSHIH * MADAYA * SAGBA

LEGEND

- No. of inter-agency convoys (IACs)
- No. of beneficiaries (persons) reached by IACs
- Sub-districts with besieged communities
- Sub-districts with (HTR) hard-to-reach communities
- Sub-districts with besieged and HTR communities
- No. of distributed non-food items
- Areas covered by convoy in 2016

FOOTNOTE/S:

A. The information presented here only shows UNHCR, UNICEF, UNRWA, ICRC, IFRC convoys.
 B. One convoy is counted as one completed trip.



SYRIA: IA CONVOY ANNEX

Reporting Period: January 2017

HARD-TO-REACH AREAS

LIST OF HTR COMMUNITIES SERVED SINCE JANUARY 2016 - JANUARY 2017

Governorate	Sub-District	Community	Distribution Month	Beneficiaries	No. of Core Items Distributed	No. of Seasonal Items Distributed	No. of Supplementary Items Distributed	
Aleppo	Afrin	Afrin	April 2016	5,000	5,000	-	-	
			Mar 2016	5,000	-	1,000	-	
	Jebel Saman	Aleppo	Jun 2016	10,000	16,500	-	4,500	
	Tall Refaat	Tall Refaat	May 2016	1,000	250	-	-	
			Apr 2016	45,900	6,500	9,180	2,900	
			Jun 2016	1,250	1,250	-	-	
Hama	Madiq Castle	Madiq Castle	Jul 2016	42,667	54,400	-	12,800	
Homs	Ar-Rastan	Ar-Rastan	Apr 2016	30,000	13,500	-	3,000	
			Jul 2016	15,000	7,125	-	-	
			Nov 2016	11,667	13,000	-	6,000	
	Homs	Dar Kabira	Aug 2016	13,500	2,700	-	-	
			Oct 2016	36,000	9,100	7,200	6,000	
	Talbiseh	Talbiseh	Mar 2016	7,500	5,500	-	1,600	
			Apr 2016	15,000	10,500	-	3,000	
	Taldou	Kufr Laha	Jul 2016	15,000	7,485	-	-	
			Sep 2016	42,000	13,000	8,400	6,200	
			Jul 2016	17,750	12,800	-	-	
	Rural Damascus	Az-Zabdani	Bludan	Mar 2016	20,000	14,000	-	3,000
				May 2016	7,080	1,416	-	-
				Oct 2016	35,500	10,649	7,100	6,000
Jirud		Jirud	Aug 2016	3,750	-	750	-	
			Jun 2016	35,000	7,000	-	-	
			May 2016	22,500	22,500	-	-	
			Jun 2016	22,500	13,500	-	7,500	
Markaz Darayya	Madamiyet Elsham	Feb 2016	88,000	45,232	27,368	5,920		
		Mar 2016	10,000	-	2,000	-		
		Oct 2016	20,000	3,000	4,000	-		
		Sep 2016	10,000	-	2,000	-		
		Jun 2016	5,000	2,500	-	3,000		
Qudsiya	Qudsiya	May 2016	25,000	25,000	-	15,000		
		Oct 2016	30,000	-	6,000	-		
		Jul 2016	15,000	4,500	15,000	-		
Rural Damascus	Markaz Darayya	Madamiyet Elsham	Jan 2017	88,000	3,000	6,000	-	

BESIEGED AREAS

LIST OF BESEIGED COMMUNITIES SERVED SINCE JANUARY 2016 - JANUARY 2017

Governorate	Sub-District	Community	Distribution Month	Beneficiaries	No. of Core Items Distributed	No. of Seasonal Items Distributed	No. of Supplementary Items Distributed	
Homs	Homs	Homs	Aug 2016	7,500	1,500	-	-	
			Feb 2016	62,500	6,500	12,500	-	
			Jan 2016	40,000	8,634	22,000	7,000	
			Jul 2016	21,775	5,855	-	-	
			Jun 2016	10,890	20,778	-	3,900	
			Mar 2016	27,500	-	8,000	-	
			Oct 2016	37,500	3,000	7,500	7,500	
			Sep 2016	37,500	19,500	7,500	6,500	
			Idleb	Bennsh	Foah	Apr 2016	10,000	5,400
Jan 2016	10,000	8,000				11,544	-	
Rural Damascus	Arbin	Arbin	Jun 2016	10,000	6,000	-	-	
			Sep 2016	1,485	200	-	297	
	Duma	Duma	Jun 2016	24,000	15,200	-	-	
			Aug 2016	10,200	6,120	10,200	-	
	Kafr Batna	Beit Sawa	Beit Sawa	May 2016	10,000	8,000	-	5,600
				Oct 2016	10,200	2,200	4,290	1,800
				Apr 2016	1,563	835	-	363
				Apr 2016	2,625	1,420	-	633
				Apr 2016	4,750	2,565	-	1,143
	Madaya	Madaya	Madaya	Apr 2016	1,313	710	-	318
				Apr 2016	2,625	1,420	-	633
				Apr 2016	39,385	3,040	7,877	1,353
				May 2016	4,495	-	899	-
	Madaya	Madaya	Madaya	Apr 2016	6,500	3,510	-	1,560
Apr 2016				19,500	10,530	-	780	
Aug 2016				22,585	-	4,517	-	
Jan 2016				20,000	26,000	14,000	350	
Mar 2016				15,204	-	-	18,404	
			Sep 2016	19,000	3,800	-	2,800	



SYRIA: IA CONVOY ANNEX

Reporting Period: January 2017

HARD-TO-REACH AREAS

LIST OF SUB-DISTRICT WITH HTR COMMUNITIES AS OF JAN 2017

Sub-District.	No. HTR Communities	Sub-District	No. HTR Communities	Sub-District	No. HTR Communities	Sub-District	No. HTR Communities
Abu Kamal	9	Bulbul	29	Jebel Saman	3	Raheiba	1
Abu Qalqal	43	Damascus	4	Jirud	2	Raju	46
Afrin	44	Darbasiyah	56	Jurneyyeh	40	Ras Al Ain	71
Aghtrin	38	Dayr Hafir	11	Kafr Zeita	7	Rasm Haram El-Imam	17
Ain al Arab	57	Deir Attiyeh	1	Karama	24	Sabe Byar	3
Al Bab	30	Deir-ez-Zor	16	Karnaz	2	Sabka	14
Al Mayadin	8	Dhameer	1	Khan Arnaba	3	Saboura	1
Al-Hasakeh	69	Eastern Bari	7	Khasham	8	Sarghaya	1
Al-Khafsa	78	Eastern Kwaives	5	Kisreh	14	Sarin	101
Al-Malikeyyeh	98	Ein Elfijeh	6	Kisweh	5	Sa'sa'	10
Al-Thawrah	1	Ein Elniser	4	Lower Shyookh	31	Shadadah	12
Amuda	60	Ein Issa	38	Maadan	12	Sharan	32
An Nabk	1	Esal El-Ward	2	Ma'bтали	23	Sheikh El-Hadid	12
Areeshah	11	Farqalas	2	Madiq Castle	16	Sokhneh	6
A'rima	30	Ghabagheb	3	Mansura	24	Suluk	65
Ar-Ra'ee	29	Ghandorah	27	Mare'	19	Sur	15
Ar-Raqqa	69	Hajar Aswad	1	Markada	7	Suran	20
Ar-Rastan	16	Hajin	5	Markaz Darayya	1	Susat	5
Ashara	7	Hama	4	Maskana	21	Tabni	11
Ash-Shajara	15	Hamra	26	Menbij	124	Tadaf	18
As-Saan	2	Harbanifse	6	Muhasan	7	Tadmor	3
As-Salamiyeh	2	Haritan	1	Muhradah	3		
As-Sanamayn	1	Hole	21	Nabul	3		
At Tall	4	Homs	5	Oqeirbat	26		
A'zaz	8	Izra'	5	Qahtaniyyeh	60		
Az-Zabdani	4	Jalaa	6	Qaryatein	1		
Babella	5	Jandairis	34	Qatana	2		
Bait Jan	9	Jarablus	27	Quamishli	62		
Basira	14	Jawadiyah	38	Qudsiya	3		
Be'r Al-Hulo Al-Wardeyyel	42	Jeb Ej-Jarrah	20	Quneitra	7		
Thiban	10	Taldu	8	Tal Hmis	105		
Ya'robiyah	47	Tall Refaat	10	Tal Tamer	64		
Ziyara	10	Tell Abiad	49	Talbiseh	13		

BESIEGED AREAS

LIST OF BESEIGED COMMUNITIES AS OF JAN 2017

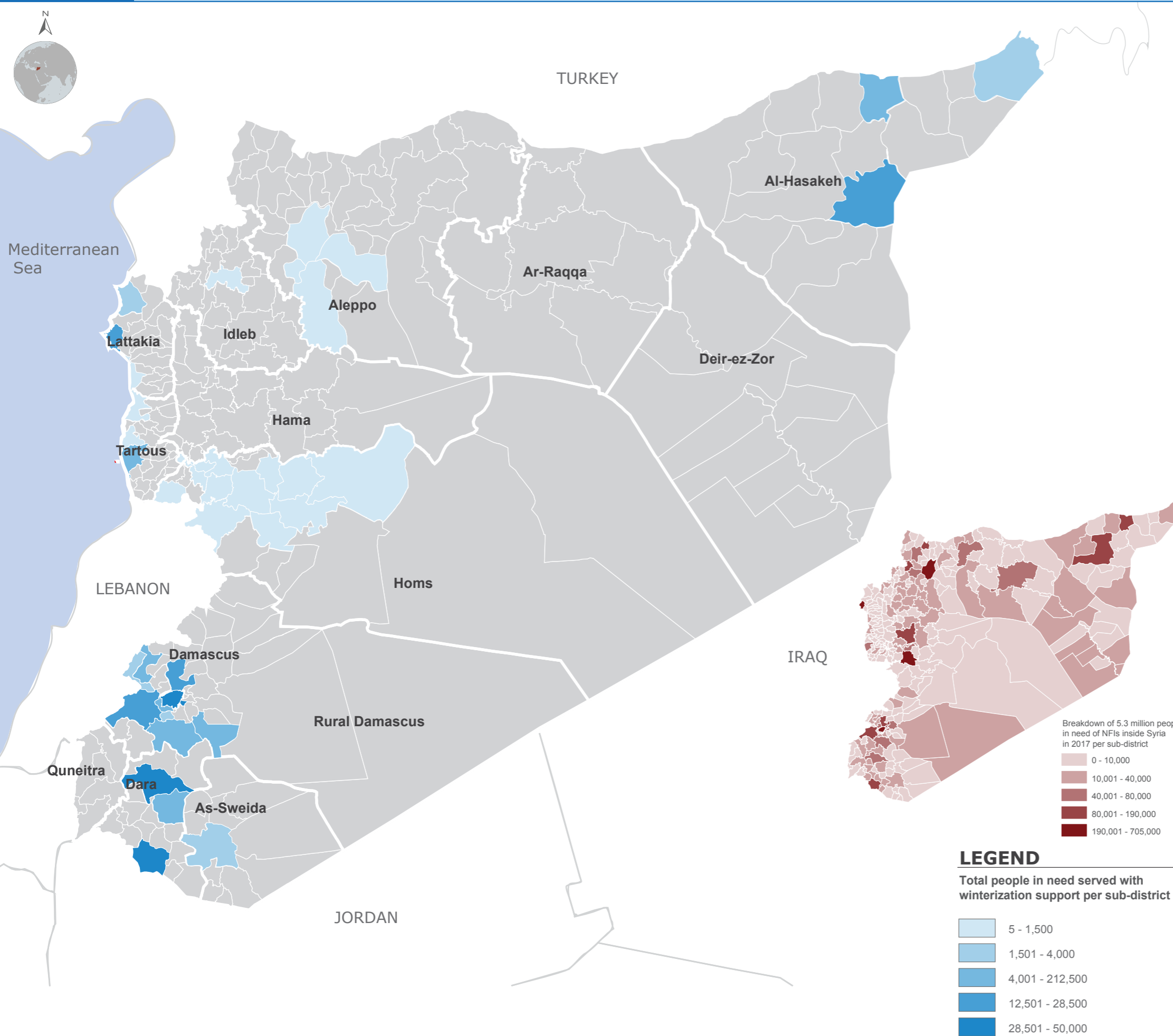
Sub-District	Community	Sub-District2	Community3	Sub-District4	Community5	Sub-District6	Community7
Arbin	Arbin	Bennsh	Foah	Maaret Tamsrin	Kafraya Maar Tamsari	Duma	Shafuniyeh
Az-Zabdani	Az-Zabdani	Kafr Batna	Hammura	Qatana	Khan Elshih	Damascus	Yarmuk
Nashabiyeh	Beit Nayem	Harasta	Harasta	Madaya	Madaya	Arbin	Zamalka
Kafr Batna	Beit Sawa	Kafr Batna	Hezzeh	Kafr Batna	Mahmadiyah		
Madaya	Bqine	Homs	Homs (Wa'er)	Harasta	Misraba		
Damascus	Joubar	Kafr Batna	Hosh Al-Ashary	Harasta	Modira		
Deir-ez-Zor	Deir-ez-Zor***	Duma	Hosh Eldawahrel	Nashabiyeh	Nashabiyeh		
Duma	Duma	Nashabiyeh	Hzrma	Nashabiyeh	Otaia		
Kafr Batna	Eftreis	Kafr Batna	Jisrein	Nashabiyeh	Salhiyeh		
Kafr Batna	Ein Terma	Kafr Batna	Kafr Batna	Kafr Batna	Saqba		

*** Al Jafra, Al Jami' Al Kabeer wa Al Wasat, Al Bougailia, Al Muhajireen, Al Thawra_ Al Jourah, Qosour, Rashdiyeh



SYRIA: NFI WINTERIZATION SUPPORT

Reporting Period: January 2017



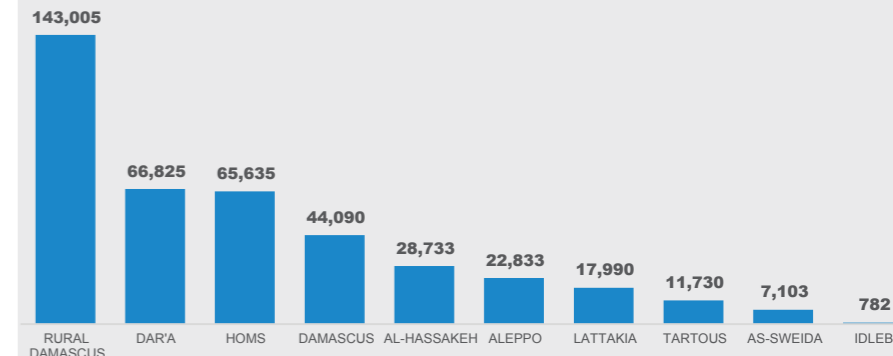
SUMMARY



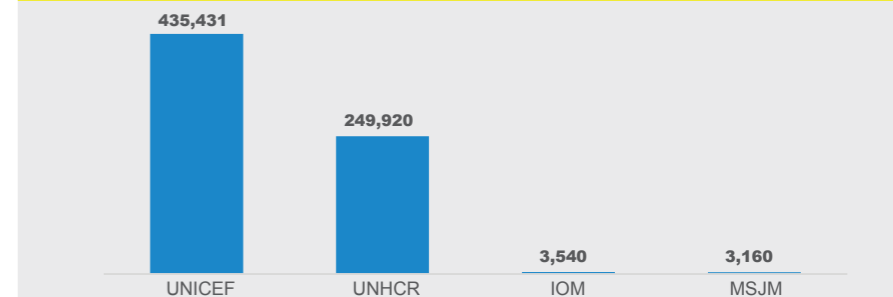
408,726

PEOPLE IN NEED WHO RECEIVED WINTERIZATION SUPPORT IN 2017

BREAKDOWN OF BENEFICIARIES PER GOVERNORATE



BREAKDOWN OF BENEFICIARIES PER AGENCY

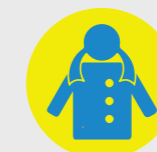


NOTE: Breakdown of beneficiaries per agency does not necessarily sum up to the reported total number of winterization beneficiaries as there could be some duplication of served beneficiaries per agency.

QUANTITY OF WINTER ITEMS PER TYPE

337,708

ESTIMATE NUMBER OF WINTER ITEMS DISTRIBUTED



ESTIMATE QUANTITY OF WINTER CLOTHING KITS*

95,464



ESTIMATE QUANTITY OF PLASTIC SHEET \ WATER PROOF FLOORING

10,810



ESTIMATE QUANTITY OF OTHER ITEMS

231,434

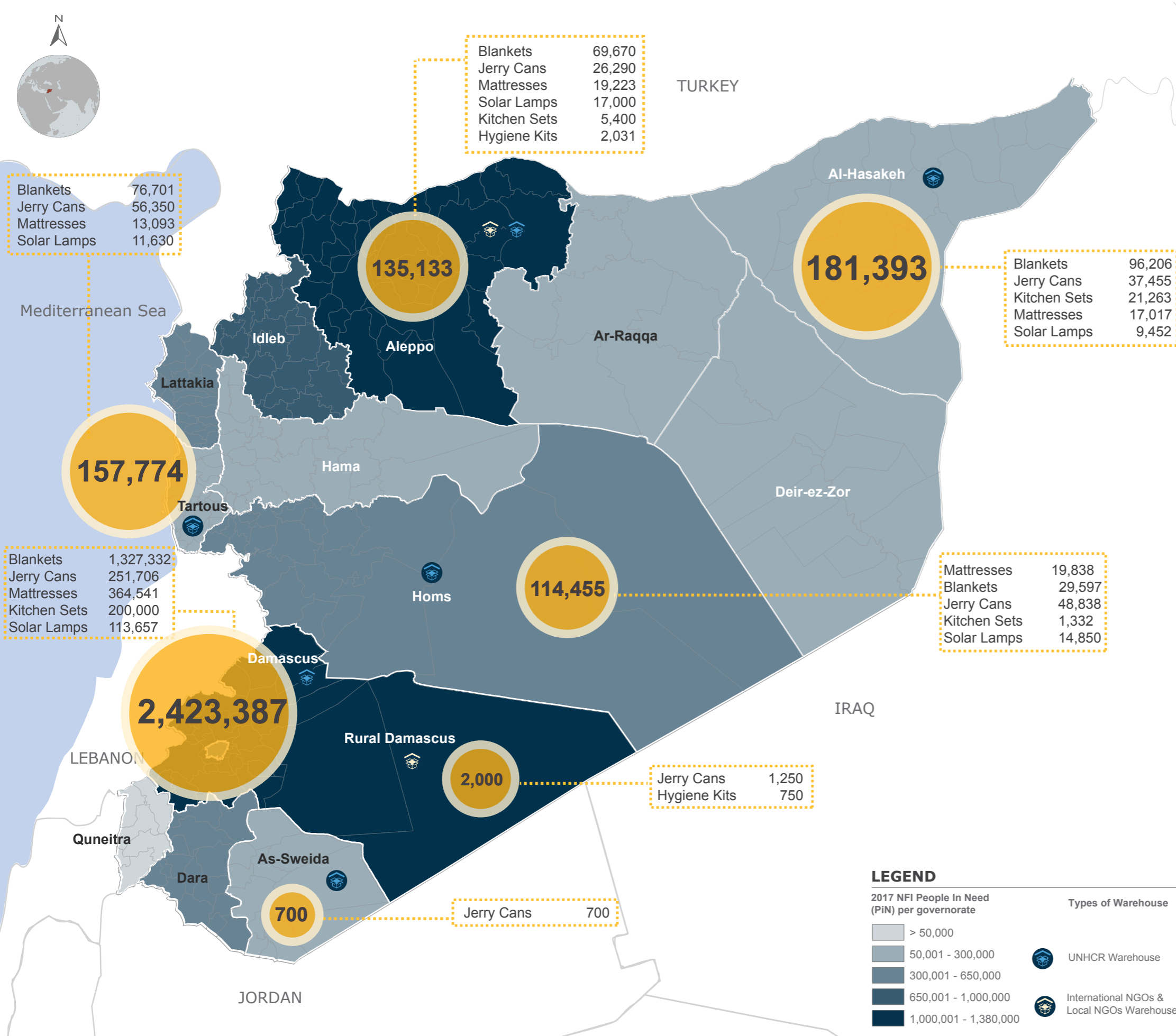
*NOTE: Content of winterization kit per agency varies.

IOM (cotton underwear long sleeve with long pants, wool gloves, wool hats, wool scarves, wool socks)
UNHCR (sweater, underwear, baby clothing set, high thermal blanket, plastic sheet, sleeping bag, jackets)
UNICEF (children winter clothes)



SYRIA: NFI STOCKPILE

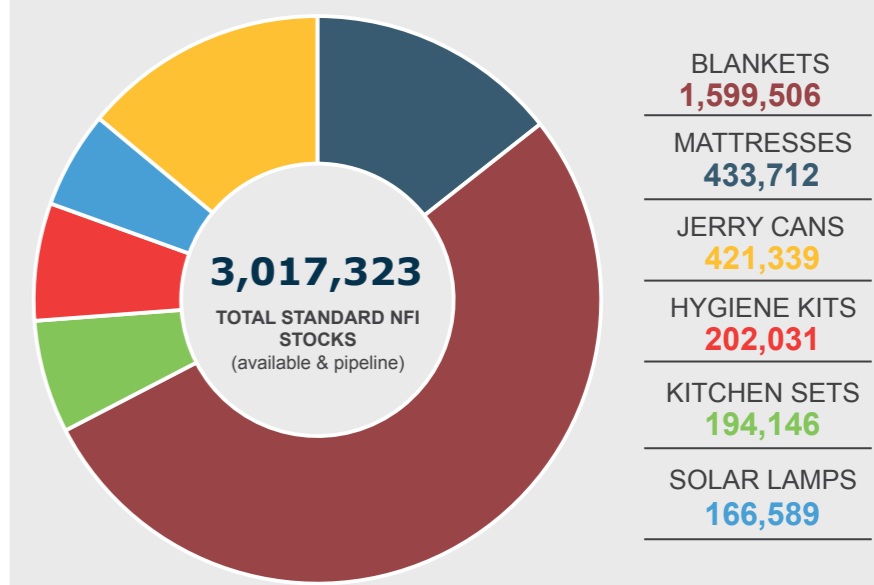
Reporting Period: January 2017



5,133,224 TOTAL STANDARD AND SUPPLEMENTARY NFI STOCKS FOR JANUARY

STANDARD NON-FOOD ITEMS

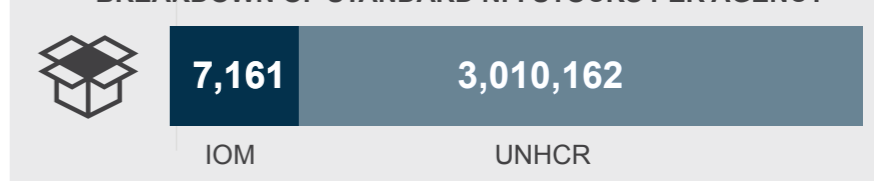
BREAKDOWN OF STANDARD NFI STOCKS PER TYPE



BREAKDOWN OF STANDARD NFI STOCKS PER STATUS



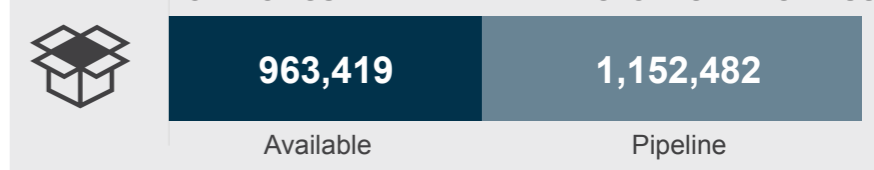
BREAKDOWN OF STANDARD NFI STOCKS PER AGENCY



SUPPLEMENTARY NON-FOOD ITEMS

2,115,901 TOTAL SUPPLEMENTARY NFI (available and pipeline)

BREAKDOWN OF SUPPLEMENTARY NFI STOCKS PER STATUS



BREAKDOWN OF SUPPLEMENTARY NFI STOCKS PER AGENCY

