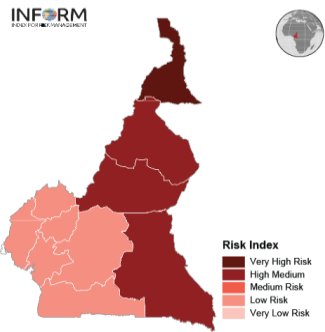
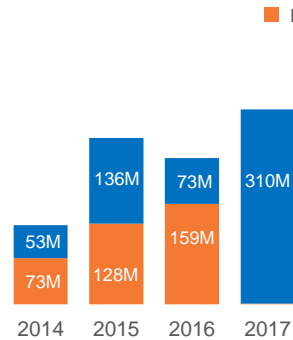


Index for Risk Management*

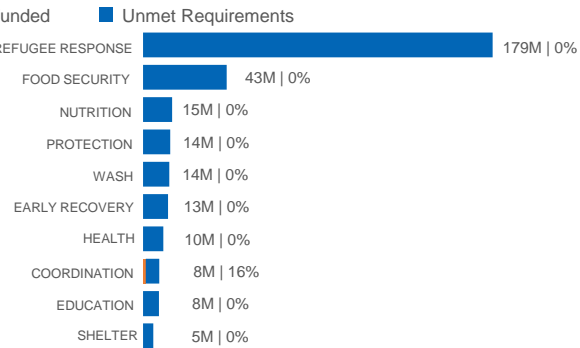


* For more information, visit <http://www.inform-index.org>

Contributed and Unmet



Requirements and Funding by Sector

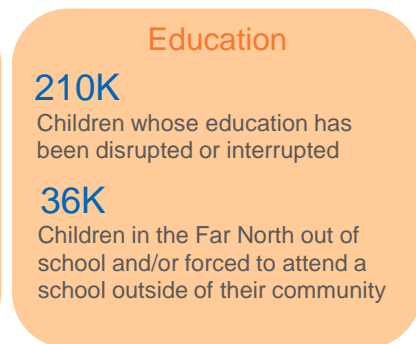
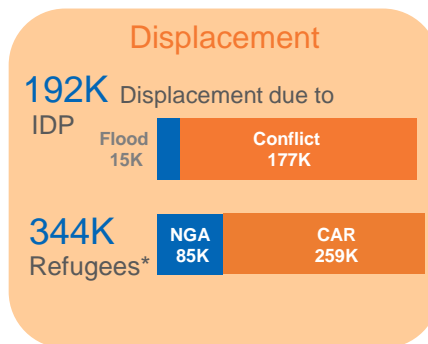
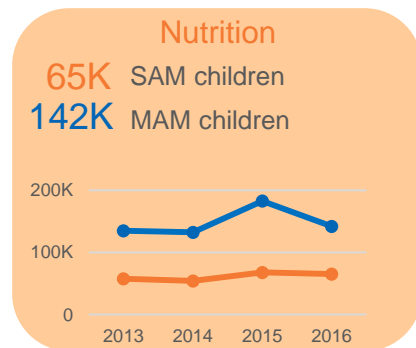
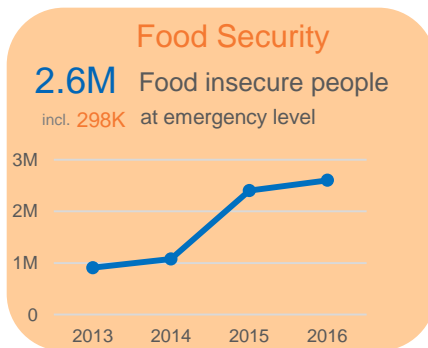


XXX = Requirements
XX% = % of received funds

- Requirements (in US\$)**
\$ **310M**
- Funding (in US\$)**
\$ **1.3M** (HRP*) **0** (Outside HRP)
- Number of organisations**
42
- Number of projects**
156

* HRP = Humanitarian Response Plan

KEY FIGURES



KEY DRIVERS OF THE CRISIS



Recurring natural disasters such as droughts and floods, combined with the volatility of markets, pushed many households and communities into chronic vulnerability.



Conflict in northern Nigeria and CAR has led to an influx of refugees in Cameroon and caused internal displacements. In addition, increasing insecurity in the Far North Region and along the border of CAR hampers humanitarian access.



Poor coverage of sanitation and access to clean water remain the main causes of malnutrition and water-borne diseases.

HDI Ranking*

153/188

Life Expectancy*

55.5

GDP Growth Rate*

5.9%

U5 Child Mortality*

94.5/1,000

Fertility Rate*

4.7

Literacy Rate*

71%

Maternal Mortality*

596/100,000

Pop. below the Poverty Line*

27.6%

Refugees* | NGA : Nigerian refugees CAR : Central african refugees

* As of 2015 (Life Expectancy, Adult Literacy Rate, Maternal Mortality, U5 Child Mortality, Pop. below the Poverty Line), 2014 (Fertility Rate, GDP Growth Rate, HDI Ranking)