

CHILD PROTECTION SUB-SECTOR OPERATIONAL PRESENCE

BORNO STATE



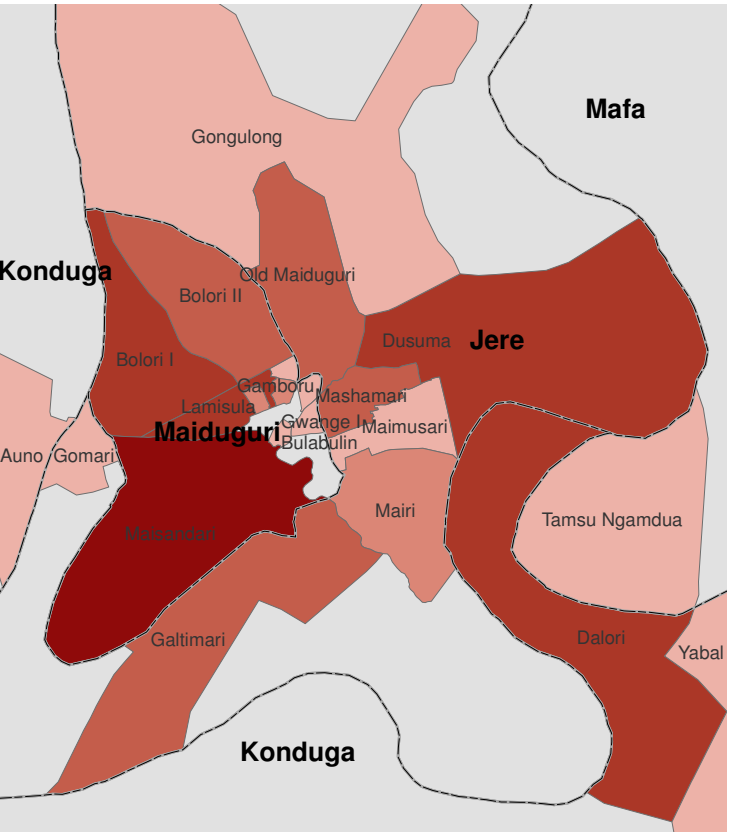
Source: CPSWG 5W as of May 2017 / updated at 05 June.

CP Core Commitments

CAAFAG	Yellow
MRE	Blue
PSS	Red
UASC	Green

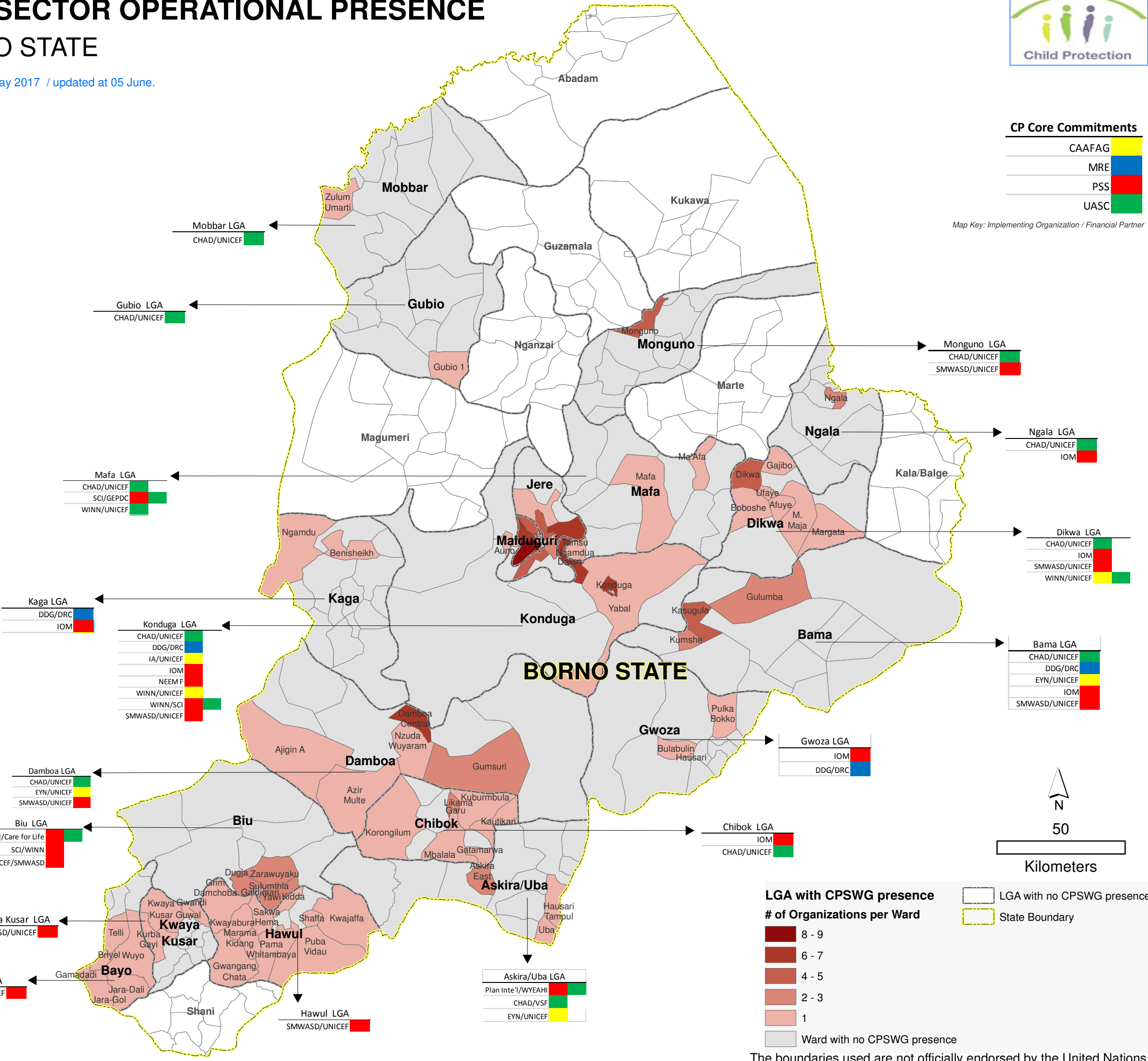
Map Key: Implementing Organization / Financial Partner

MMC & JERE

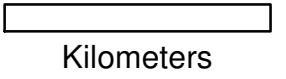


MMC & JERE

CHAD/UNICEF	Green
DDG/DRC	Blue
EYN/UNICEF	Yellow
IA/UNICEF	Red
IOM	Green
IRC	Red
NEEM F	Green
Plan Inte'l/GEPDC	Red
SCI/GEPDC	Green
SCI/WINN	Red
SMWASD	Red



50



LGA with CPSWG presence

of Organizations per Ward

8 - 9	Dark Red
6 - 7	Red
4 - 5	Light Red
2 - 3	Very Light Red
1	Lightest Red
Ward with no CPSWG presence	Grey

LGA with no CPSWG presence

State Boundary

Yellow dashed line

For information and update contact with:
 CPSWG Coordinator, Borno, Yobe & Adamawa, Perrine Corcuff (pcorcuff@unicef.org)
 CPSWG IMO, Abuja & Adamawa: Kamran Ahmad (kaahmad@unicef.org)
 CPSWG IMO, Borno, Yobe: Muhammad Farhad (mfarhad@unicef.org)

The boundaries used are not officially endorsed by the United Nations.