

KEY FIGURES¹

147,000
number of internally displaced people living in Adamawa
0.6 per cent decrease compared to DTM RXIV

655,100
number of people returning to their areas of origin
0.6 per cent increase compared to DTM RXIV

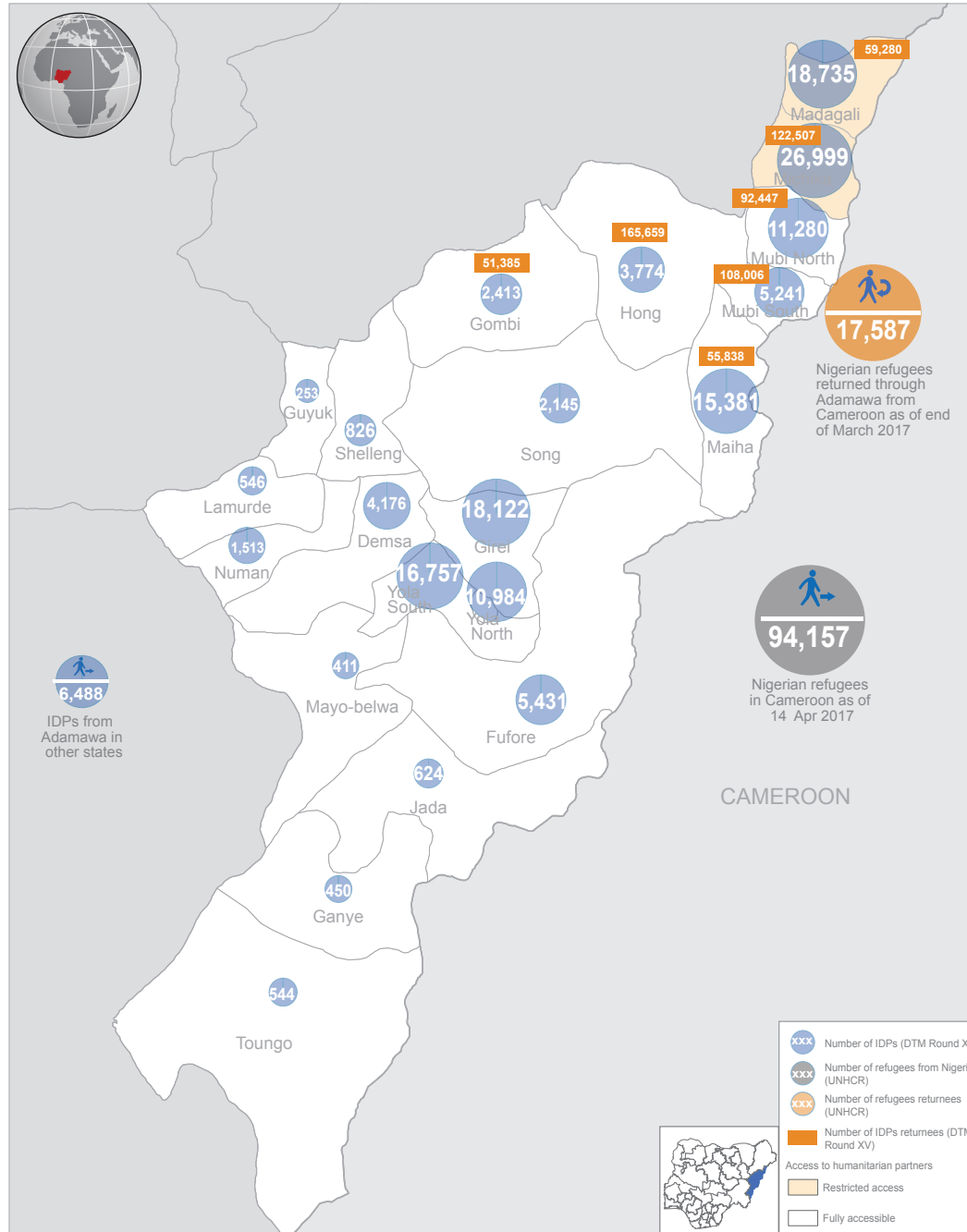
IDPs LOCAL GOVERNMENT AREAS OF ORIGIN²

Majority of the IDPs from Adamawa state originate from Madagali and Michika LGA:

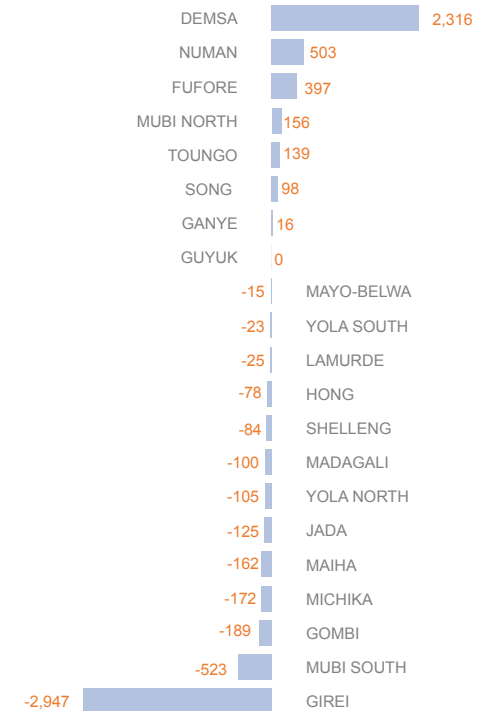
IDPS LGA OF ORIGIN	TOTAL IDPS FROM LGA	PERCENTAGE OF DISPLACED PEOPLE WITHIN THE LGA
MADAGALI	68,720	24%
MICHIKA	20,025	30%
DEMSA	4,086	100%
MUBI SOUTH	1,884	0%
MUBI NORTH	1,478	0%
GOMBI	623	0%
HONG	250	0%
MAIHA	113	0%
YOLA NORTH	97	0%

NUMBER OF RETURNEES BETWEEN THE PUBLICATION OF DTM RXIV AND DTM RXV³

MICHIKA	2,152
MUBI NORTH	1,233
HONG	221
MADAGALI	215
MAIHA	182
MUBI SOUTH	159
GOMBI	61



INCREASE/DECREASE OF IDPS COMPARED TO DTM RXIV⁴



According to DTM the decrease in the number of displaced people reported in 13 LGAs in Adamawa was as a result of people returning to their places of origin or search for better livelihood opportunities while in Demsa and Numan communal clashes were the reason for displacement.

CURRENT LOCATION OF IDPS FROM ADAMAWA⁵

